

## CaDA 61082W

# Instruction Manual: Engineering Series 1:20 Scale Excavator Model

**Brand:** CaDA

**Model:** 61082W

## 1. PRODUCT OVERVIEW

The CaDA Engineering Series 1:20 Scale Excavator Model is an advanced building set designed to replicate the intricate details and realistic features of a real excavator. This model provides an immersive building and play experience with its articulated arm, detailed driver's cab, and compressor room.

Key features include:

- Authentic 1:20 scale design with lifelike appearance.
- Realistic features such as the articulated arm, driver's cab, and compressor room.
- Six operational doors that can be manually opened and closed.
- Three control knobs and a function switch for authentic excavator arm and chassis movements.



Figure 1.1: The CaDA Engineering Series Excavator Model (Model 61082W) and its packaging.

## 2. SAFETY INFORMATION

### WARNING: CHOKING HAZARD

- Small parts. Not intended for children under 3 years.
- Adult supervision is recommended during assembly and play.
- Keep all packaging materials away from children to prevent suffocation.

## 3. WHAT'S IN THE BOX

Your CaDA Engineering Series Excavator Model package includes:

- All necessary building blocks and components for the 1:20 Scale Excavator Model.
- One (1) Instruction Manual.

*Note: The set does NOT include a power pack. Power pack and motors need to be purchased separately for motorization and remote control functions.*

## 4. SETUP AND ASSEMBLY

Follow the detailed step-by-step instructions provided in the included Instruction Manual to assemble your excavator model. Ensure all parts are correctly identified and connected as per the diagrams.

### 4.1. Initial Assembly

Begin by sorting the building blocks according to type and size. This will streamline the assembly process. Refer to the manual for specific part identification.



Figure 4.1: Side view of the assembled excavator model, showcasing its articulated arm and tracks.

### 4.2. Motorization (Optional)

For enhanced functionality, this model supports optional motorization. If you have purchased the separate power pack and motors, refer to the specific sections in the main instruction manual for their installation. The design allows for quick motorization by integrating the power pack and motors into designated compartments.

The motorization system typically includes:

- L size motors for boom/left track control, stick/right track control, and bucket/cabin control.
- Micro motor for lever control.
- 2.4GHz radio control battery box.



Figure 4.2: Rear view of the excavator with operational doors open, revealing internal components and potential motorization points.

## 5. OPERATING INSTRUCTIONS

The excavator model features manual controls for various functions, providing an interactive experience. If motorized, the remote control will enable additional functionalities.

### 5.1. Chassis Control (Manual Slewing)

To control the chassis slewing (rotation), locate the designated knob. Rotate the knob down to engage, then turn the left knob to control the 360-degree rotation of the excavator's upper structure.

# Chassis control



Rotate the knob down



Turn the left knob to control slewing



Manual slewing

Figure 5.1: Illustration of manual chassis control for 360-degree slewing.

## 5.2. Arm and Bucket Control (Manual)

To control the excavator arm and bucket, locate the corresponding lever. Rotate the lever up to engage, then turn the right knob to control the movement of the arm and bucket, simulating hydraulic actions.

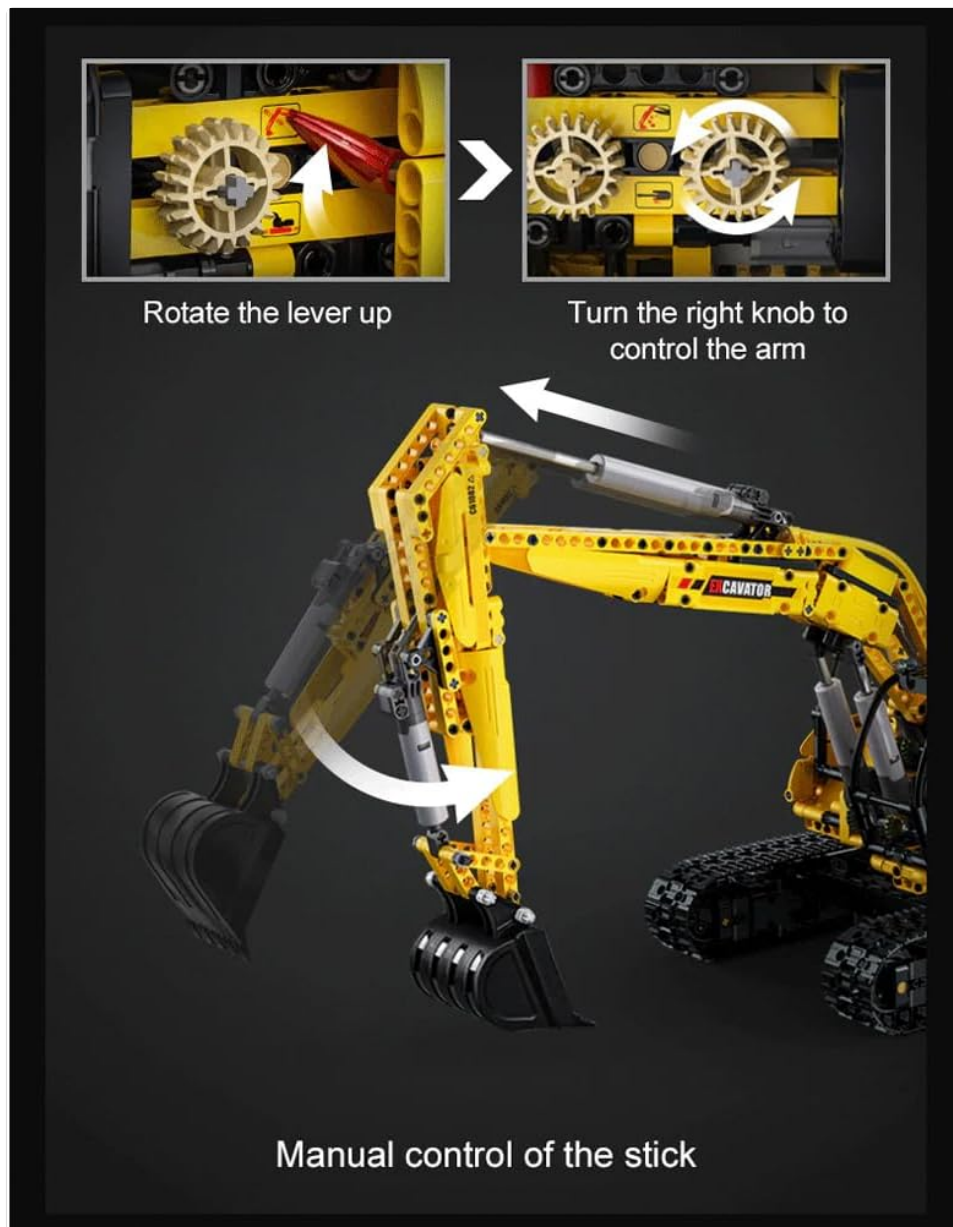


Figure 5.2: Illustration of manual arm and bucket control.

### 5.3. Operational Doors

The model features six operational doors that can be manually opened and closed to reveal internal details such as the compressor room and other mechanical components.

## 6. MAINTENANCE

To ensure the longevity and optimal performance of your CaDA Excavator Model, follow these maintenance guidelines:

- **Cleaning:** Use a soft, dry cloth to gently wipe down the model. Avoid using harsh chemicals or abrasive materials, as they may damage the plastic.
- **Storage:** Store the model in a cool, dry place away from direct sunlight and extreme temperatures. This helps prevent warping or discoloration of the plastic components.
- **Handling:** Handle the model with care, especially the articulated arm and delicate moving parts, to prevent accidental breakage.
- **Part Integrity:** Periodically check for any loose or damaged parts. Reattach or replace as necessary to maintain

structural integrity.

### 7. TROUBLESHOOTING

If you encounter any issues with your excavator model, consider the following common solutions:

Problem	Possible Cause	Solution
Parts do not fit together properly (too tight/loose).	Minor manufacturing variations; incorrect part orientation.	Ensure correct part is used and oriented as per manual. Apply gentle, even pressure. For very tight fits, slight rotation may help. For loose fits, re-check connections.
Missing parts.	Packaging error.	Carefully check all packaging materials. If parts are genuinely missing, contact CaDA customer support with your purchase details.
Manual functions (arm, chassis) are stiff.	Friction from new parts; incorrect assembly of gears/linkages.	Operate functions gently to break in new parts. Review assembly steps for the affected mechanism to ensure all connections are correct and free of obstruction.

For issues not listed here or if solutions do not resolve the problem, please contact customer support.

### 8. SPECIFICATIONS

Attribute	Detail
Product Dimensions	18.11 x 4.13 x 14.96 inches
Item Weight	7.19 pounds
Model Number	61082W
Manufacturer Recommended Age	8 years and up
Release Date	November 20, 2023
Manufacturer	Cada

### 9. WARRANTY INFORMATION

Specific warranty details for the CaDA Engineering Series 1:20 Scale Excavator Model are typically provided with your purchase documentation or on the official CaDA website. Please refer to those resources for comprehensive warranty terms and conditions.

## 10. CUSTOMER SUPPORT

For further assistance, inquiries about missing parts, or technical support, please visit the official CaDA brand store or contact their customer service directly.



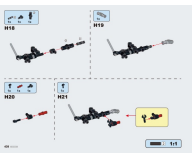



**CaDA Brand Store:** [Visit CaDA Store on Amazon](#)

*Note: No official seller videos are available for embedding based on the provided criteria.*

© 2025 CaDA. All rights reserved.

This manual is for informational purposes only. Product specifications are subject to change without notice.

### Related Documents - 61082W

	<p><a href="#">CaDA C61082 Functional Excavator Building Instructions</a></p> <p>This comprehensive instruction manual guides builders through the assembly of the CaDA C61082 Functional Excavator, a detailed 1702-piece construction toy. Discover the process of building a realistic replica of an excavator with this step-by-step guide from CaDA.</p>
	<p><a href="#">CaDA Master Mechanical Safe Building Set Instructions</a></p> <p>Detailed instructions for assembling the CaDA Master Mechanical Safe building block set. Learn how to construct and understand the mechanics of this intricate model.</p>
	<p><a href="#">CaDA Bricks Moc V12 Hypercar C61053W Assembly Instructions</a></p> <p>Detailed assembly guide for the CaDA Bricks Moc V12 Hypercar C61053W, providing step-by-step instructions for building this detailed model.</p>
	<p><a href="#">CaDA AE86 Trueno Initial D Building Blocks - Assembly Guide</a></p> <p>Detailed assembly instructions for the CaDA AE86 Trueno Initial D building block set (C61024). Learn how to construct this iconic car model.</p>
	<p><a href="#">CaDA Street Coffee Shop Building Blocks Assembly Instructions C66005</a></p> <p>Step-by-step assembly guide for the CaDA Street Coffee Shop building block set (C66005), featuring a personal introduction from the designer, Ohsojang.</p>
	<p><a href="#">CaDA C51001 Off-road Warrior Building Blocks Assembly Instructions</a></p> <p>Detailed assembly instructions for the CaDA C51001 Off-road Warrior remote-controlled building block set. Learn how to build this Technic-style RC vehicle.</p>

