



Manuals.plus /

› JONKUU /

› JONKUU 10000mAh 22.5W Fast Charging Portable Charger (Model R2) User Manual

JONKUU R2

JONKUU 10000mAh 22.5W Fast Charging Portable Charger

MODEL: R2

Introduction

Thank you for choosing the JONKUU 10000mAh 22.5W Fast Charging Portable Charger, Model R2. This power bank is designed to provide reliable and fast charging for your electronic devices on the go. With its compact design and high-capacity battery, it ensures your devices stay powered when you need them most.

Product Features

- **High-Speed Charging:** Equipped with PD 3.0 & QC 4+ technologies, offering up to 22.5W output for rapid device charging.
- **Compact and Lightweight Design:** Slim body for easy portability, making it ideal for travel and daily use.
- **Wide Compatibility:** Compatible with most mobile phones, tablets, and other USB-powered devices.
- **Multiple Charging Ports:** Features 2 USB-A output ports and 1 USB-C input/output port, allowing simultaneous charging of up to 3 devices.
- **LED Digital Display:** Clearly shows the remaining battery percentage.
- **Quality Lithium Cell:** Built with UL Certified lithium-ion battery cells for extended lifespan and safety features like overcharge and overdischarge protection.

Small Charger Multi Fuction

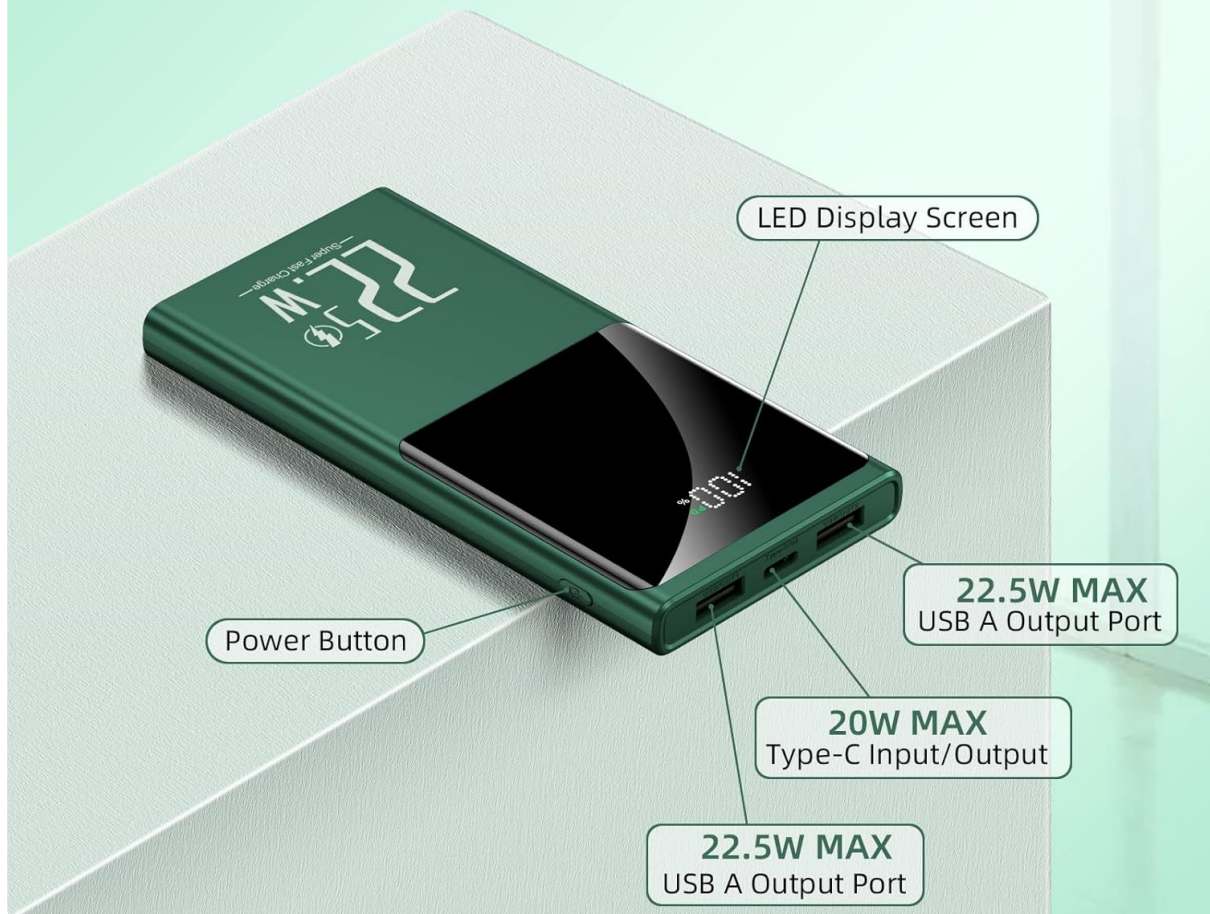


Image: Overview of the JONKUU Portable Charger, highlighting its LED display and various input/output ports.

SMALLEST SIZE

10000mAh huge capacity

⚖️: 230g



Image: Visual representation of the compact size and weight (230g) of the JONKUU Portable Charger, with dimensions shown.

Setup

1. **Unboxing:** Carefully remove the power bank and included accessories (Type-C cable, user manual) from the packaging.
2. **Initial Charge:** Before first use, fully charge the power bank. Connect the provided Type-C cable to the power bank's USB-C port and a compatible USB wall adapter (not included). The LED display will show the charging progress.

Operating Instructions

1. **Checking Battery Level:** Press the power button once to activate the LED digital display, which shows the remaining battery percentage.
2. **Charging Devices:**
 - Connect your device to one of the power bank's USB-A output ports or the USB-C input/output port using an appropriate charging cable.

- The power bank will automatically begin charging your device.
- You can charge up to three devices simultaneously.

3. Recharging the Power Bank:

- Connect the power bank's USB-C port to a power source (e.g., wall adapter, computer USB port) using the provided Type-C cable.
- The LED display will show the charging status, indicating when it is fully charged.

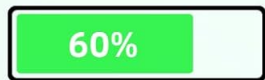
charging 3 Devices Simultaneously



Image: The power bank charging three devices concurrently, demonstrating its multi-port capability.

Dual QC3.0 and PD3.0

22.5W MAX



22.5W

30
mins



Other 2.4A

Image: Illustration of the 22.5W fast charging capability, showing a smartphone charging rapidly.

Video: This video demonstrates the compact design and fast charging capabilities of a 10000mAh power bank, similar to the JONKUU R2 model, highlighting its portability and efficiency in charging multiple devices.

Maintenance

- **Cleaning:** Use a soft, dry cloth to clean the power bank. Avoid using harsh chemicals or abrasive materials.
- **Storage:** Store the power bank in a cool, dry place away from direct sunlight and extreme temperatures.
- **Battery Care:** To prolong battery life, fully charge the power bank at least once every three months if not in regular use.

Troubleshooting

- **Power Bank Not Charging:**
 - Ensure the charging cable is securely connected to both the power bank and the power source.

- Try a different charging cable or wall adapter.

- **Device Not Charging from Power Bank:**

- Check if the power bank has sufficient charge.
- Ensure the charging cable is securely connected to both the power bank and your device.
- Try a different charging cable or a different port on the power bank.

- **Slow Charging:**

- Ensure you are using a fast-charging compatible cable and adapter for optimal speed.
- Charging multiple devices simultaneously may reduce individual charging speeds.

Specifications

Feature	Detail
Battery Type	Lithium-ion Battery
Capacity	10000mAh
USB-C Input/Output	20W Max
USB-A Output Ports	22.5W Max (each)
Dimensions	14 x 7 x 1 cm
Weight	230 g
Model Number	R2
Special Features	Fast Charging, LED Display

Power for Whole Week

Galaxy S8
2.3
charges

iPhone 8
3.6
charges

iPhone 12
2.2
charges



Image: The power bank's capacity providing multiple charges for various smartphone models.

Safety Information

- Do not expose the power bank to extreme temperatures, direct sunlight, or fire.
- Do not disassemble, modify, or attempt to repair the device.
- Keep out of reach of children.
- Avoid dropping or subjecting the power bank to strong impacts.
- Do not use the power bank if it is damaged or swollen.
- Dispose of the power bank responsibly according to local regulations.

Quality Lithium Cell



UL Certified



Extended
Life Span



Overcharge
Protection



Avoids Swollen
Battery



Overdischarge
Protection

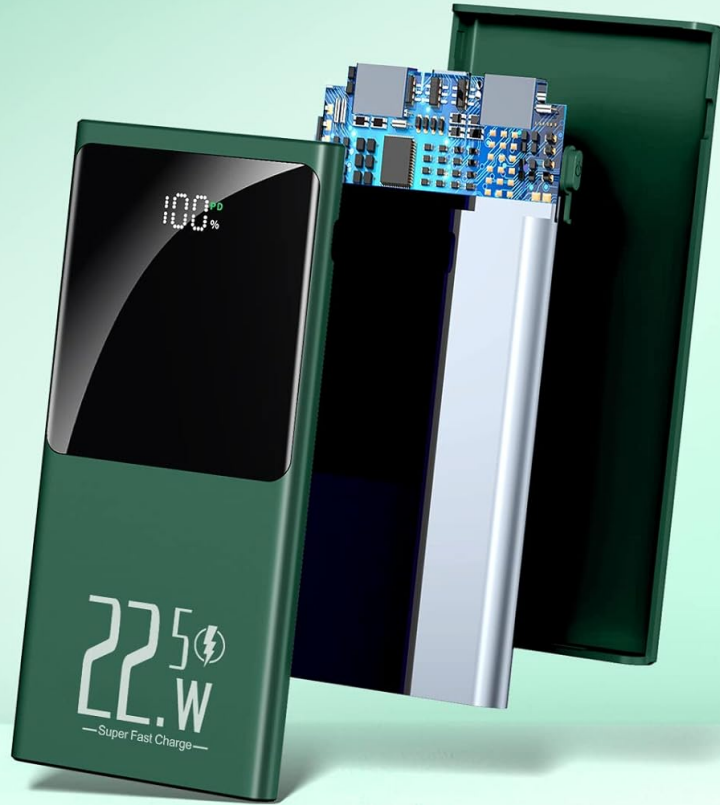


Image: Internal view of the power bank highlighting its quality lithium cell and safety features.

Warranty and Support

JONKUU is committed to providing high-quality products and customer service. For any questions, concerns, or warranty claims, please refer to the contact information provided with your purchase or visit the official JONKUU website for support.