

manuals.plus /

› [NOVUS](#) /

› [NOVUS Cordless Hair Straightener and Curler 2-in-1 User Manual](#)

## NOVUS B0BBGD7P6J

# NOVUS Cordless Hair Straightener and Curler 2-in-1 User Manual

MODEL: B0BBGD7P6J

Brand: NOVUS

## 1. PRODUCT OVERVIEW

---

The NOVUS Cordless Hair Straightener and Curler is a versatile 2-in-1 styling tool designed for portability and convenience. It features ceramic 3D floating panels infused with essential oils for smooth styling and reduced frizz. This device is USB rechargeable and offers three adjustable temperature settings, making it suitable for various hair types.



Image 1.1: NOVUS Cordless Hair Straightener and Curler, showing the device, USB-C charging cable, and two pink hair clips.

## 2. SAFETY INFORMATION

---

Please read all safety instructions before using the appliance to reduce the risk of fire, electric shock, injury, or damage to the product.

- **Burn Hazard:** Surfaces become extremely hot during use. Avoid direct contact with skin, especially the scalp, ears,

and neck.

- **Electric Shock Risk:** Keep the appliance away from water. Do not use near bathtubs, sinks, showers, or other water-filled containers. Do not handle with wet hands.
- **Fire Risk:** Unplug the appliance when not in use. Do not leave it unattended when plugged in or while heating. Ensure the appliance is placed on a heat-resistant surface.
- **Children:** Keep out of reach of children. This appliance is not intended for use by persons with reduced physical, sensory, or mental capabilities, or lack of experience and knowledge, unless they have been given supervision or instruction concerning use of the appliance by a person responsible for their safety.
- **Damage:** Do not use if the appliance or charging cable is damaged. Contact customer support for assistance.
- **Charging:** Only use the provided USB-C cable and a recommended 5V 2A charging adapter. Do not use the appliance while it is charging.

### 3. SETUP AND CHARGING

---

#### 3.1 Initial Charge

Before first use, fully charge the device. Connect the provided USB-C charging cable to the charging port on the straightener and plug the other end into a 5V 2A USB power adapter (not included) or a compatible USB port.

# USB Fast Charging

It is recommended to use **5V 2A** fast charging plug to charge



Charging  
**Type-C**



Charging Time  
**2.5H**



Working time  
**45 Min**



Design Of  
**Wireless**



Charge it fully before first use.  
Don't use it when charging



Use it anywhere  
Anytime, in any country

Image 3.1: USB Fast Charging details, illustrating Type-C charging, 2.5-hour charging time, 45-minute working time, and wireless design.

- **Charging Time:** Approximately 2.5 hours for a full charge.
- **Working Time:** Up to 45 minutes on a full charge, depending on temperature setting and hair type.
- **Charging Indicator:** The indicator lights will show charging status. Ensure the device is fully charged before use.
- **Charging Sources:** Can be charged via car chargers, power banks, or laptops using the USB-C cable.

## 3.2 Safety Lock

The device is equipped with a safety lock to prevent accidental activation and keep the plates closed during storage or travel.



Image 3.2: Safety Lock illustration, showing the slider in 'ON' (locked) and 'OFF' (unlocked) positions.

- To **lock** the plates, slide the lock switch to the 'ON' position (indicated by a closed padlock icon).
- To **unlock** the plates, slide the lock switch to the 'OFF' position (indicated by an open padlock icon).

## 4. OPERATING INSTRUCTIONS

---

### 4.1 Power On/Off

- To turn **ON** the device, press and hold the power button for approximately 3 seconds. The indicator lights will illuminate.
- To turn **OFF** the device, press and hold the power button for approximately 3 seconds. The indicator lights will turn off.

### 4.2 Temperature Settings

The device features three adjustable temperature settings. It heats up quickly, reaching the desired temperature in approximately 15 seconds. The intelligent temperature control function remembers your last used setting for convenience.



# 3 ADJUSTABLE Temperature modes

- **400°F** For thick and coarse hair

- **360°F** For normal textured hair

- **320°F** For thin and fine hair



Fast Heating  
**15S**

## INTELLIGENT Temperature Control

- 15s fast heating.
- Press the button for 3S to turn on / off.
- Move up one gear: 40°F with each press.



Image 4.1: Adjustable Temperature Modes, indicating 400°F for thick/coarse hair, 360°F for normal hair, and 320°F for thin/fine hair.

- Press the power button briefly to cycle through the temperature settings:
- **320°F (Green Light):** Recommended for thin and fine hair.
- **360°F (Blue Light):** Recommended for normal textured hair.
- **400°F (Red Light):** Recommended for thick and coarse hair.
- Allow a short period for the device to reach the selected temperature for optimal performance.



### 4.3 Styling Hair

The NOVUS Cordless Hair Straightener and Curler is designed for both straightening and curling. Its 3D floating ceramic panels ensure even heat distribution and prevent hair pulling, while essential oils moisturize and reduce frizz.



Image 4.2: The 2-in-1 functionality, showing how the device can be used to create both straight and curly hairstyles.

- Ensure hair is clean, dry, and detangled before styling.
- For straightening, take small sections of hair and slowly glide the straightener from roots to ends.

- For curling, clamp a section of hair between the plates, rotate the device 180 degrees, and gently pull through the hair.
- For thick hair, use smaller sections and multiple passes for best results.
- The essential oil-infused plates release steam as they heat, providing moisture and shine to your hair.

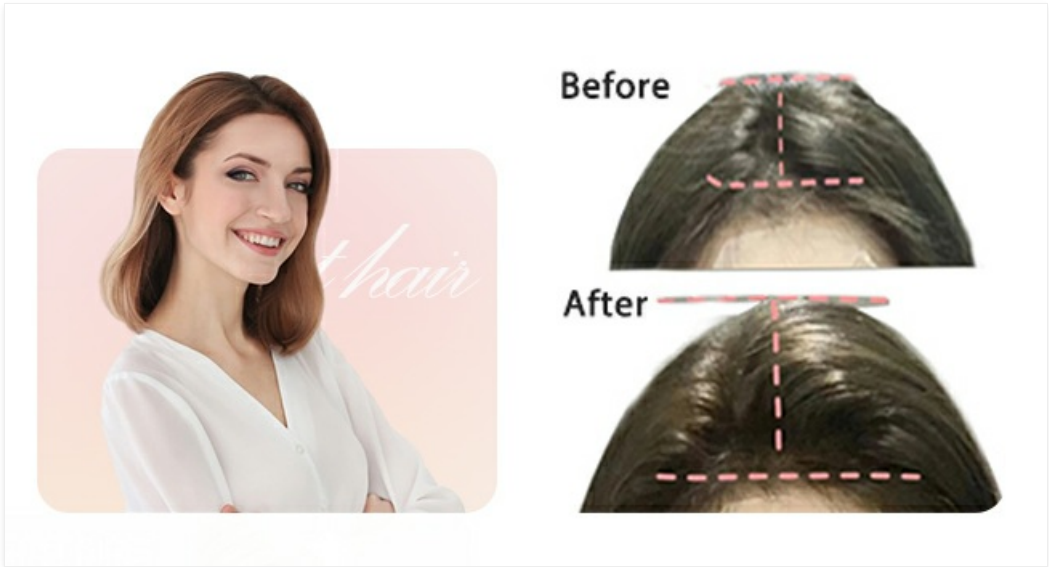


Image 4.3: Features of the styling plates, highlighting the inner essential oil for smooth, shiny, moisturized hair and the 3D floating panels for even heating and no snagging.

## 5. MAINTENANCE

### 5.1 Cleaning

- Ensure the device is turned off, unplugged (if charging), and completely cool before cleaning.
- Wipe the exterior of the device with a soft, damp cloth.
- Gently clean the ceramic plates with a soft, slightly damp cloth to remove any product residue. Do not use abrasive cleaners or harsh chemicals.
- Ensure the device is completely dry before storing or next use.

### 5.2 Storage

- Store the device in a cool, dry place, away from direct sunlight and moisture.
- Engage the safety lock to keep the plates closed during storage.
- Do not wrap the charging cable tightly around the device, as this can damage the cable.

## 6. TROUBLESHOOTING

If you encounter issues with your NOVUS Cordless Hair Straightener and Curler, please refer to the following common problems and solutions:

Problem	Possible Cause	Solution
Device does not turn on.	Low battery or not charged.	Charge the device fully using the USB-C cable and a 5V 2A adapter. Ensure the power button is pressed and held for 3 seconds.



Problem	Possible Cause	Solution
Device does not heat up sufficiently.	Incorrect temperature setting or insufficient heating time.	Select a higher temperature setting appropriate for your hair type. Allow approximately 15 seconds for the device to reach the desired temperature. Ensure the device is fully charged.
Battery life is shorter than expected.	High temperature setting used continuously; device not fully charged.	Ensure the device is fully charged before each use. Higher temperatures consume more battery. Consider using a lower temperature if suitable for your hair.
Hair is snagging or pulling.	Hair is tangled or plates are not clean.	Ensure hair is thoroughly detangled before styling. Clean the ceramic plates to remove any residue.

If the problem persists after attempting these solutions, please contact NOVUS customer support for further assistance.

## 7. SPECIFICATIONS

---




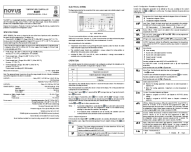


Feature	Detail
Product Dimensions	9.2 x 3 x 3 inches
Weight	10.58 ounces
Battery	1 Lithium Ion battery (included)
Charging Type	USB Type-C (5V 2A recommended)
Material	Ceramic, Metal, Plastic
Temperature Settings	320°F, 360°F, 400°F
Product Benefits	Curling, Straightening
Model Number (ASIN)	B0BBGD7P6J

## 8. WARRANTY AND SUPPORT

---

NOVUS is committed to providing quality products and customer satisfaction.

- **Warranty:** This product comes with a 2-year maintenance service.
- **Customer Support:** NOVUS offers 24-hour customer support. For any questions, issues, or professional hair guidance, please contact NOVUS customer service.
- **Contact Information:** Please refer to your product packaging or the official NOVUS website for the most current contact details.

	<p><a href="#">Novus NV18SSB Cordless Snow Blower Operator's Manual</a></p> <p>Official operator's manual for the Novus NV18SSB cordless snow blower. Contains detailed safety instructions, assembly guides, operation procedures, maintenance tips, troubleshooting, parts catalog, and warranty information for safe and efficient snow clearing.</p>
	<p><a href="#">NOVUS USB-i485 Converter RS485/RS422 Instruction Manual</a></p> <p>NOVUS USB-i485 Converter: This instruction manual provides comprehensive details on the NOVUS USB-i485 Converter, a device that bridges RS485/RS422 industrial buses to USB. Learn about installation, driver setup for Windows, Linux, and Mac, connection configurations for various network types (Half Duplex, Full Duplex, RS422), technical specifications, and troubleshooting tips. Ideal for industrial automation and data acquisition systems.</p>
	<p><a href="#">Manual de Instruções DigiRail OEE V1.4x - Novus</a></p> <p>Guia completo para instalação, configuração e operação do dispositivo DigiRail OEE da Novus, cobrindo protocolos MQTT e Modbus-TCP, interfaces de comunicação e especificações técnicas.</p>
	<p><a href="#">NOVUS N322T Digital Temperature Controller - Operating Manual</a></p> <p>Comprehensive operating manual for the NOVUS N322T digital temperature controller. Covers specifications, electrical wiring, operation modes, parameter configuration, protection features, error messages, and warranty information.</p>
	<p><a href="#">Novus TxIsoRail-HRT Temperature Transmitter: Operating Manual &amp; Specifications</a></p> <p>Explore the Novus TxIsoRail-HRT, a versatile DIN rail mount temperature transmitter designed for industrial applications. This manual details its universal input capabilities (RTD, Thermocouple, mV), 4-20mA output with HART communication, and electrical isolation features for reliable temperature measurement and process control.</p>
	<p><a href="#">DigiRail OEE User Guide V1.2x C - NOVUS AUTOMATION</a></p> <p>User guide for the NOVUS DigiRail OEE multi-input module. Covers installation, communication interfaces (USB, RS485, Ethernet, Wi-Fi), MQTT and Modbus-TCP protocols, configuration software, technical specifications, and industrial installation recommendations.</p>