



Manuals.plus /

› Piececool /

› Piececool Wish Cranes 3D Metal Model Building Kit Instruction Manual

Piececool 6pcs/Set Wish Cranes

Piececool Wish Cranes 3D Metal Model Building Kit Instruction Manual

Model: 6pcs/Set Wish Cranes

INTRODUCTION

This instruction manual provides comprehensive guidance for assembling your Piececool 6pcs/Set Wish Cranes 3D Metal Model Building Kit. These intricate metal puzzles are designed for adults and teenagers aged 16 and above, offering a challenging yet rewarding construction experience. Each kit allows you to create detailed metal crane models, which can serve as unique decorative pieces.

The assembly process requires patience and precision. Following these instructions carefully will help ensure a successful and enjoyable building experience.

WONDERFUL GIFT FOR AGE 14+



Overview of the six distinct Wish Cranes models included in the kit.

SETUP AND PREPARATION

Before beginning assembly, ensure you have a clean, well-lit workspace. Organize your components and tools to facilitate a smooth building process.

Required Tools (Not Included):

- **Clipper:** For carefully removing parts from the metal sheets.
- **Needle Nose Pliers:** Essential for bending and twisting connecting tabs.
- **Steel Pencil (Recommended):** A tool for folding and twisting tabs in tight spaces where pliers may not fit.
- **Magnifying Glass (Optional):** Useful for examining small parts and intricate details.

Unpacking and Part Identification:

1. Carefully open the kit and remove all metal sheets and the instruction booklet.

2. Review the provided instruction booklet thoroughly to familiarize yourself with the parts and assembly sequence.
3. Identify the various parts on the metal sheets. Each part is typically labeled or identifiable by its shape and position on the sheet.



A builder with the necessary tools and instructions, ready for assembly.

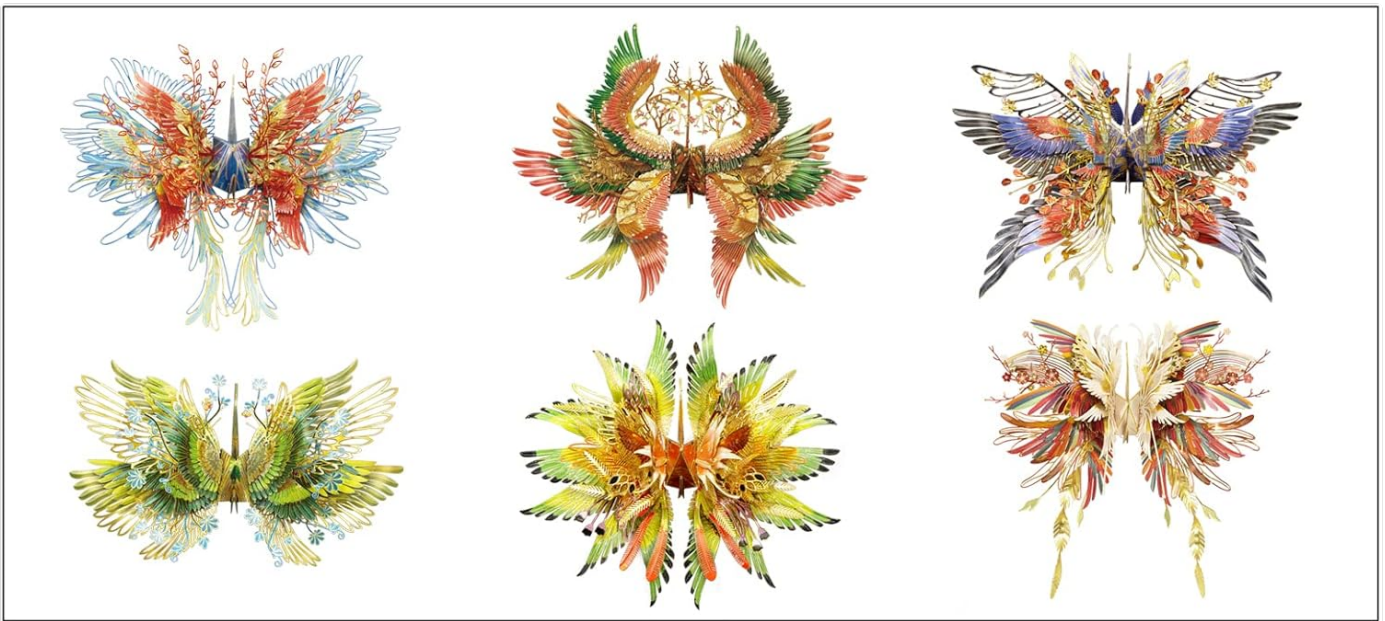
ASSEMBLY INSTRUCTIONS

The assembly of Piececool metal models involves a series of precise steps. Follow the detailed diagrams in your kit's instruction booklet for specific model-by-model guidance. The general method is outlined below:

General Assembly Steps:

1. **Remove Parts:** Use water-cutting pliers to carefully clip each part from the metal sheet at the nozzle position. Exercise caution to avoid bending or damaging the parts.
2. **Identify Parts:** Before folding, identify the insert tabs, fold lines, and insert holes on each part. Understanding these features is crucial for correct assembly.

3. **Folding Parts:** Use pointed-nose pliers to fold the cutting parts into their designated shapes. Ensure folds are precise and sharp along the indicated lines.
4. **Retaining Parts:** Parts are secured by inserting tabs into corresponding slots and then either bending or twisting the tabs.
 - **Bending Tab:** Bend the tab flat against the adjoining piece. This method allows for easier adjustment if a part needs to be repositioned.
 - **Twisting Tab:** Twist the tab to secure it. This creates a more permanent connection.
5. **Follow Sequential Steps:** Always follow the numbered steps in your kit's instruction booklet. Do not skip steps or attempt to assemble parts out of sequence.
6. **Patience is Key:** These models are intricate. Take your time with each step, especially with delicate folds and connections. Rushing can lead to damaged parts or incorrect assembly.
7. **Curving Delicate Pieces:** For parts like wings that require a specific curve, it is often easier to attach them first and then gently shape them at the very end of the assembly process to ensure symmetry and avoid accidental damage during earlier steps.



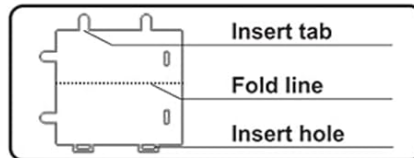
● Installation Method:

a. Remove the parts



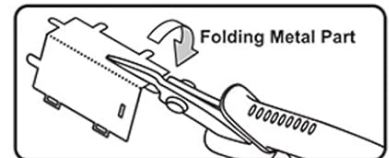
Please use the water-cutting pliers to cut the nozzle position and remove the parts.

b. Identify the parts



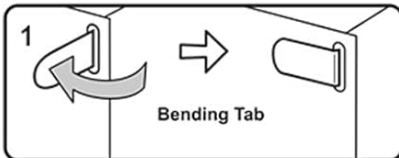
Identify the insert tab, fold line and the insert hole.

c. Folding the parts

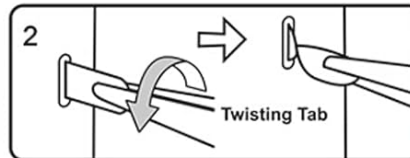


Please use the Pointed-nose pliers to fold the cutting parts into models.

d. Retaining the parts



or



Fundamental steps for assembling Piececool metal models.

MAINTENANCE

To preserve the appearance and integrity of your assembled Piececool Wish Cranes models, follow these maintenance guidelines:

- **Cleaning:** Dust your models regularly using a soft, dry brush or a can of compressed air. Avoid using water or chemical cleaners, as these can damage the metal finish or paint.
- **Handling:** Handle the models gently. Avoid applying excessive force or dropping them, as the delicate metal parts can bend or break.
- **Storage/Display:** Display your models in a stable location away from direct sunlight, high humidity, or extreme temperatures. These conditions can affect the metal and paint over time.

TROUBLESHOOTING

While assembling your metal model, you might encounter some common challenges. Here are solutions to help you overcome them:

Common Issues and Solutions:

- **Parts Not Fitting/Too Loose:**

Solution: Double-check the instruction diagrams to ensure you are using the correct parts and inserting them into the right slots. Sometimes, tabs may need a slight adjustment (gentle bending) to fit snugly. If you bent tabs instead of twisting, it's easier to adjust.

- **Instructions Seem Unclear:**

Solution: The instructions are primarily diagram-based. Examine the images very closely, paying attention to the orientation of parts and the direction of folds. A magnifying glass can be helpful. If a step is particularly confusing, try to visualize the next few steps to understand the overall structure.

- **Tabs Breaking Off:**

Solution: This often occurs from excessive force or repeated bending. Always bend tabs gently and only once if possible. If a tab breaks, you may need to use a small amount of super glue to secure the part, though this should be a last resort.

- **Paint Flaking:**

Solution: Some models may experience minor paint flaking during assembly due to the nature of the material and handling. Handle painted parts with extra care and avoid scraping surfaces.

- **Difficulty with Delicate Folds:**

Solution: Use the recommended tools, especially needle-nose pliers and a steel pencil, for precise folds. Practice on a scrap piece of metal if available, or on a less visible part of the model.

SPECIFICATIONS

Feature	Detail
Product Name	Piececool Wish Cranes 3D Metal Model Building Kit
Model	6pcs/Set Wish Cranes
Material	Superior Stainless Steel
Recommended Age	16 years and up
Product Dimensions (approximate, individual cranes vary)	4.72 x 4.52 x 1.57 inches (overall kit packaging)
Item Weight	1.73 pounds



Approximate dimensions of individual Wish Cranes models.

WARRANTY INFORMATION

Specific warranty details for the Piececool Wish Cranes 3D Metal Model Building Kit are typically provided within the product packaging or can be obtained directly from the manufacturer. Please refer to any documentation included with your purchase for comprehensive warranty terms and conditions.

CUSTOMER SUPPORT

For further assistance, missing parts, or specific inquiries regarding your Piececool 3D Metal Model Building Kit, please contact the manufacturer directly.

- **Manufacturer:** Piececool
- **Online Store:** You can visit the official Piececool store for more information and products: Piececool Store on Amazon

