



[Manuals.plus](#) /

› [STORAGE MANIAC](#) /

› STORAGE MANIAC 4-Section Laundry Sorter Instruction Manual

STORAGE MANIAC 4 Section Laundry Sorter

STORAGE MANIAC 4-Section Laundry Sorter Instruction Manual

Model: 4 Section Laundry Sorter (Multicolored)

INTRODUCTION

This manual provides instructions for the assembly, operation, and maintenance of your STORAGE MANIAC 4-Section Laundry Sorter. Please read this manual thoroughly before use to ensure proper function and longevity of the product. Retain this manual for future reference.

SAFETY INFORMATION

- Do not overload the laundry bags beyond the stated capacity of 25 lbs (approximately 11.3 kg) per bag. Overloading may cause damage to the frame or bags.
- Ensure wheels are locked when the sorter needs to remain stationary to prevent accidental movement.
- Keep out of reach of small children to prevent tipping or entanglement.
- Use the laundry sorter on a flat, stable surface to maintain balance and prevent tipping.
- Periodically check all connections and hardware to ensure they remain tight and secure.

PACKAGE CONTENTS

Verify that all components are present and undamaged before beginning assembly. If any parts are missing or damaged, please contact customer service.

- Metal Frame Components (tubing, connectors)
- 4 Removable Laundry Bags (Multicolored: Dark, Light, Color, Laundry labels)
- 4 Rolling Wheels (2 with locking mechanisms)
- Assembly Hardware (screws, wrench, Allen key)

ASSEMBLY INSTRUCTIONS

Follow these steps to assemble your laundry sorter. It is recommended to loosely assemble all parts before fully tightening any

screws to allow for easier alignment.

1. Step 1: Assemble the Frame Base

Connect the horizontal bars to the vertical side frames using the provided hardware. Ensure the frame is stable and all connections are aligned. Do not fully tighten screws yet.



Image Description: A grey metal frame for the laundry sorter, showing six horizontal bars designed for enhanced stability and load-bearing capacity, with an arrow indicating a 100 lbs weight capacity.

2. Step 2: Attach the Wheels

Insert the 4 rolling wheels into the designated holes at the bottom of the frame. Two of these wheels have locking mechanisms; position these at one end of the sorter for convenient access.



Image Description: A close-up of a 360-degree swivel wheel with a locking mechanism, illustrating how to engage and disengage the

lock.

3. Step 3: Hang the Laundry Bags

Place the four removable laundry bags onto the top horizontal bars of the frame. Each bag has metal handles designed for hanging. The bags are labeled "DARK", "LIGHT", "COLOR", and "LAUNDRY" to facilitate sorting.



Image Description: The fully assembled STORAGE MANIAC 4-Section Laundry Sorter with multicolored bags labeled "DARK", "LIGHT", "COLOR", and "LAUNDRY" hanging within the grey metal frame. Side pockets are visible on the end bags.

4. Step 4: Final Tightening

Once all components are in place and the frame is properly aligned, securely tighten all screws using the provided tools.

OPERATING INSTRUCTIONS

1. **Sorting Laundry:** Utilize the labeled bags to separate clothes by type or color (dark, light, color, general laundry). The integrated side pockets can be used for smaller items such as socks or delicates.



Image Description: A close-up of the laundry sorter bags, showing different types of clothes (towels, colors, lights, darks) being placed into their respective labeled compartments.

- Moving the Sorter:** Unlock the two lockable wheels to move the sorter freely. To secure the sorter in a desired location, engage the locking mechanism on the wheels.



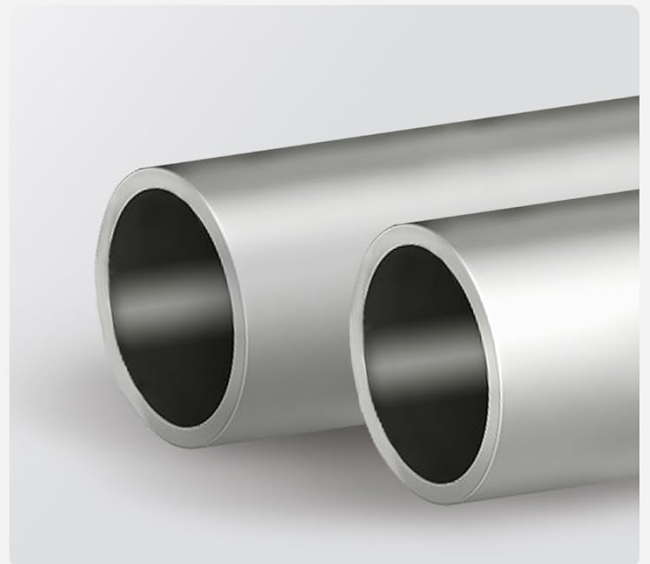
Water-resistant liner



2 lockable wheels



Ergonomic curved



Durable reinforced tubing

Image Description: A person pushing the STORAGE MANIAC 4-Section Laundry Sorter, demonstrating its mobility on wheels.

- 3. Removing Laundry Bags:** Each bag can be individually lifted off the frame using its metal handles. This allows for easy transport of sorted laundry to the washing machine without moving the entire sorter.



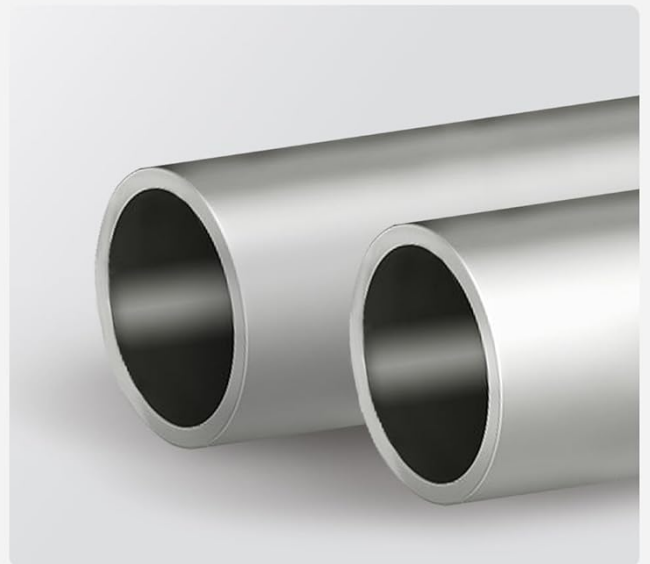
Water-resistant liner



2 lockable wheels



Ergonomic curved



Durable reinforced tubing

Image Description: A person lifting a laundry bag from the sorter frame, highlighting the removable bag feature for separate use.

MAINTENANCE

- **Cleaning the Bags:** The polyester canvas bags feature an inner waterproof coating. To clean, wipe them with a damp cloth. Do not machine wash or tumble dry the bags, as this may damage the coating and material.



Image Description: A hand wiping the water-resistant inner lining of a laundry bag with a white cloth, demonstrating easy cleaning.

- **Cleaning the Frame:** Wipe the metal frame with a soft, damp cloth. Avoid using abrasive cleaners or harsh chemicals, which could damage the finish.
- **Regular Inspection:** Periodically inspect all connections, screws, and wheels to ensure they are secure and functioning correctly. Tighten any loose hardware as needed.

TROUBLESHOOTING

- **Issue: Sorter is wobbly or unstable.**
Solution: Ensure all screws are tightened securely. Check that the frame components are correctly aligned according to the assembly instructions.
- **Issue: Wheels are not rolling smoothly or are difficult to move.**
Solution: Check for any debris (lint, hair, etc.) caught in the wheels and remove it. Ensure the locking mechanism on the wheels is fully disengaged.
- **Issue: Laundry bags are not fitting correctly or are sagging.**
Solution: Ensure the bags are hung properly on the frame's top bars, with the metal handles fully seated. Avoid overloading individual bags beyond their capacity.

SPECIFICATIONS

Feature	Detail
Product Dimensions (Overall)	39.37" L x 16.93" W x 31.5" H
Each Laundry Bag Dimension	14.76" L x 8.66" W x 21.65" H
Total Capacity	47.8 Gallons (181 Liters)
Capacity Per Bag	Up to 25 lbs
Material	Polyester (bags), Metal (frame)
Number of Sections	4
Wheels	4 (2 lockable)
Item Weight	10.83 pounds

WARRANTY AND SUPPORT

For warranty information or product support, please contact STORAGE MANIAC customer service through their official channels or the retailer where the product was purchased. Please retain your purchase receipt as proof of purchase for any warranty claims or support inquiries.