

[Manuals.plus](#) /

› [THLIFURE](#) /

› THLIFURE 10W 1ft LED Black Light Bar Instruction Manual (2 Pack, Model VES174)

## THLIFURE VES174

# THLIFURE 10W 1ft LED Black Light Bar Instruction Manual

Model: VES174 (2 Pack)

## INTRODUCTION

Thank you for choosing the THLIFURE 10W 1ft LED Black Light Bar. This product is designed to create a vibrant UV effect, making fluorescent materials glow brightly. It is ideal for various applications including illuminating tapestries, posters, body paint, and enhancing glow parties. This manual provides essential information for the safe and effective use of your black light bars.

## SAFETY INFORMATION

- Ensure the power source is DC 5V. Using an incorrect voltage may damage the device and pose a safety risk.
- Do not stare directly into the UV light for extended periods, as it may cause eye discomfort.
- Keep the device away from water or excessive moisture. This product is not waterproof.
- Do not attempt to disassemble or modify the light bar. Refer all servicing to qualified personnel.
- Keep out of reach of children.

## WHAT'S IN THE BOX

Each THLIFURE 10W 1ft LED Black Light Bar 2-Pack includes the following components:

- 2 x Black Light Fixtures (1ft LED Black Light Bars)
- 2 x 5ft Type-C USB Cables with On/Off Switch
- 2 sets of 3M-L Clips for wall or smooth surface installation
- 2 sets of Round Clips for smooth surface installation
- 2 sets of Screw Wall Brackets (Mounting Hardware)



Figure 1: Package contents including two black light bars, USB cables, and mounting hardware.

## SETUP AND INSTALLATION

The THLIFURE Black Light Bar offers multiple installation options to suit your needs:

1. **Magnetic Installation:** The light bars feature magnetic strips on the back, allowing them to be easily attached to any metallic surface without additional tools.
2. **Wall L-Clip Installation:** Use the provided 3M-L clips to mount the light bar to walls or other smooth surfaces. Ensure the surface is clean and dry before applying the adhesive clips.
3. **Under-Counter and Cabinet Clip Installation:** Utilize the round clips for discreet installation under counters or inside cabinets.
4. **Wall Screw Installation:** For a more permanent fixture, use the included screw wall brackets. Mark the desired position, drill pilot holes if necessary, and secure the brackets with screws before attaching the light bar.



Figure 2: Various installation methods for the black light bar.

After installation, connect the Type-C end of the USB cable to the light bar and the USB-A end to a compatible 5V power source (e.g., wall adapter, computer USB port, power bank).

## OPERATING INSTRUCTIONS

---

To operate your THLIFURE Black Light Bar:

1. Ensure the light bar is securely installed and connected to a 5V USB power source.
2. Locate the on/off switch on the USB cable.
3. Press the switch to turn the black light bar on or off.

The 395-405nm LEDs emit UV light that reacts with fluorescent materials, causing them to glow. For best results, use in a dark environment with fluorescent objects, paints, or fabrics.

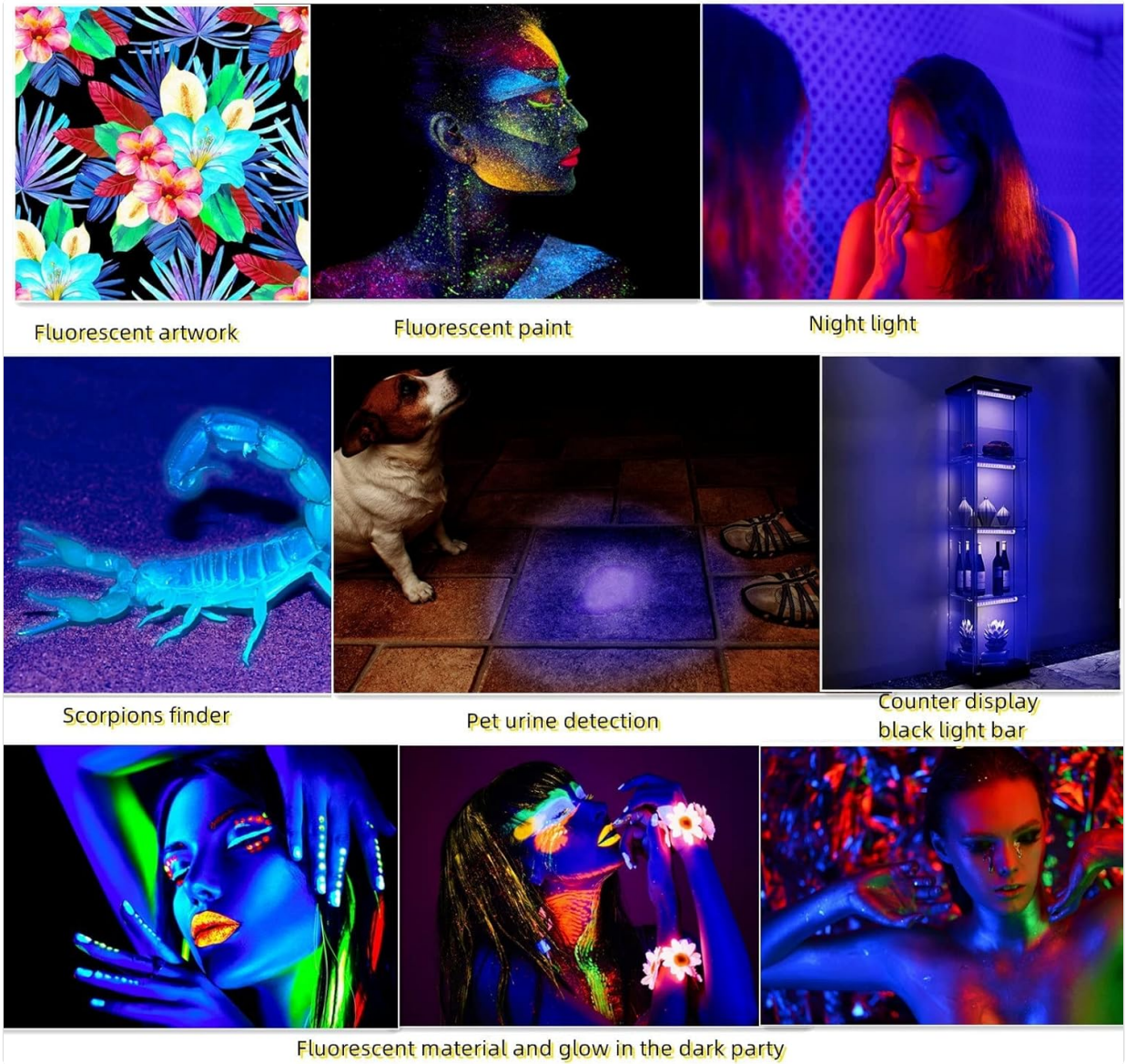


Figure 3: Examples of black light applications.



Figure 4: Black light bars illuminating a fluorescent tapestry.

## MAINTENANCE

- **Cleaning:** Disconnect the power before cleaning. Use a soft, dry cloth to wipe the surface of the light bar. Do not use abrasive cleaners or solvents.
- **Storage:** When not in use, store the light bars in a cool, dry place away from direct sunlight and extreme temperatures.
- **Inspection:** Periodically check the cable and connections for any signs of damage. If any damage is found, discontinue use and contact customer support.

## TROUBLESHOOTING

Problem	Possible Cause	Solution
Light does not turn on.	No power, loose connection, faulty cable/switch.	Check USB power source. Ensure cable is securely connected. Test with a different USB port or cable if available.

Problem	Possible Cause	Solution
Light is dim or flickers.	Insufficient power, faulty connection.	Ensure the power source provides adequate 5V. Check all connections.
Light does not create desired glow effect.	Lack of fluorescent materials, ambient light.	Ensure the room is sufficiently dark. Use materials specifically designed to react to UV blacklight.

## SPECIFICATIONS

Feature	Detail
Brand	THLIFURE
Model Name	small black light bar
Item Model Number	VES174
Power Source	Corded Electric (USB 5V)
Wattage	10 Watts
Light Source Type	LED (395-405nm)
Product Dimensions	0.87"D x 11.82"W x 0.91"H
Item Weight	0.46 Pounds (approx. 7.4 ounces)
Material	Polycarbonate, Vinyl
Installation Type	Magnetic, Wall L-Clip, Under-counter/cabinet clip, Wall screw
Included Components	Mounting Hardware
Indoor/Outdoor Usage	Indoor (USB port can work with power bank outdoors)
Water Resistance Level	Not Water Resistant

## WARRANTY AND SUPPORT

For any questions, concerns, or technical support regarding your THLIFURE Black Light Bar, please contact the seller directly through your purchase platform. Please retain your proof of purchase for any warranty claims.