

TYC MX-3375

TYC Wireless Earbuds User Manual

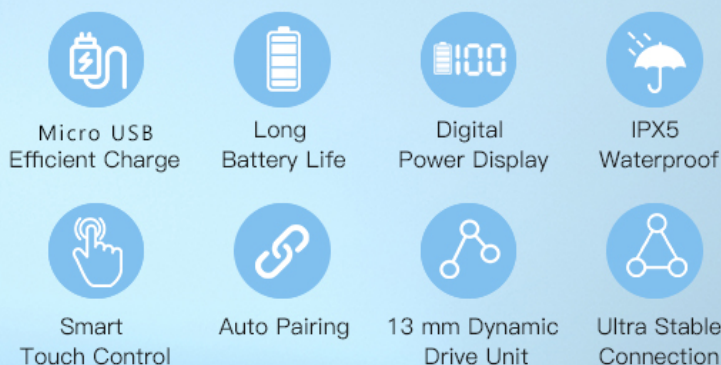
Model: MX-3375

INTRODUCTION

Thank you for choosing TYC Wireless Earbuds. This manual provides detailed instructions on how to set up, operate, and maintain your earbuds to ensure optimal performance and longevity. Please read this manual carefully before using the product and retain it for future reference.

TYC TRUE WIRELESS EARBUDS

Care-free for pairing
just enjoy your TYC earbuds



Overview of TYC True Wireless Earbuds, showcasing features like Micro USB efficient charge, long battery life, digital power display, IPX5 waterproof rating, smart touch control, auto pairing, 13mm dynamic drive unit, and ultra-stable connection.

SAFETY INFORMATION

- Do not disassemble or modify the product.
- Keep the earbuds and charging case away from extreme temperatures, humidity, and liquids.
- Avoid prolonged exposure to high volume levels to prevent hearing damage.
- Clean the earbuds regularly as instructed in the maintenance section.
- Dispose of the product responsibly according to local regulations.

PACKAGE CONTENTS

Please check the package contents upon unboxing:

- TYC Wireless Earbuds (Left and Right)
- Charging Case
- USB Charging Cable (Micro USB)
- Silicone Ear Tips (various sizes)
- User Manual

PRODUCT OVERVIEW

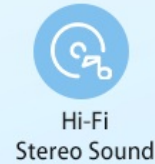
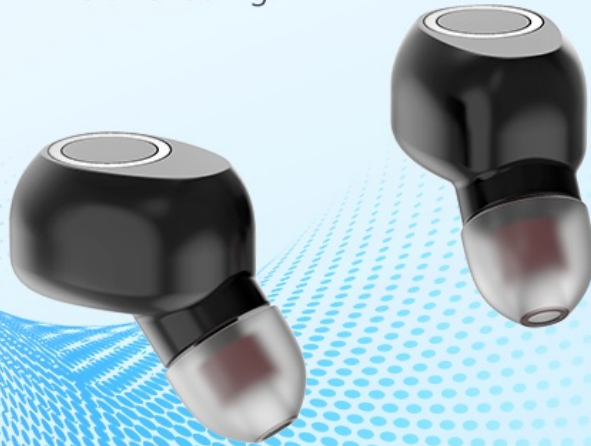
The TYC Wireless Earbuds are designed for comfort and high-quality audio. Each earbud features a touch control area, and the charging case includes a digital display for battery status.



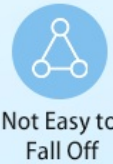
The earbuds are securely placed in their charging case, which features a clear digital display indicating the battery percentage. The earbuds themselves show glowing blue lights, indicating their charging status.

IMMERSIVE STEREO SOUND AND ERGONOMICALLY DESIGNED

Through the special structure, the earphone produces clear and loud stereo sound.
Bring you an immersive feeling.



Hi-Fi
Stereo Sound



Not Easy to
Fall Off



Ultra-
Light Design



Secure
and Comfort

The earbuds are designed for immersive stereo sound and an ergonomic fit, ensuring they are comfortable, secure, and ultra-light for extended wear.

Small and Light to Carry



2 earbuds and charging
case less than 40 g



Supper light-weight
& easy to carry



The earbuds and charging case are designed to be small and light, weighing less than 40g, making them highly portable. Dimensions are provided for both the case and an individual earbud.

1. Charging the Earbuds and Case

Before first use, fully charge both the earbuds and the charging case.

1. Place the earbuds into the charging case. Ensure they are correctly seated.
2. Connect the Micro USB charging cable to the charging port on the case and the other end to a USB power source (e.g., wall adapter, computer USB port).
3. The digital display on the charging case will show the battery percentage. The earbuds will indicate charging status with an LED light.
4. A full charge for the earbuds takes approximately 0.5 hours, providing up to 6 hours of continuous use. The case can provide up to 24 hours of endurance with multiple recharges.

Micro USB

Efficient Charge & LED Power Display



① **0.5 Hours of charge earbuds
6 hours of continuous use**

② **Get 4 fully recharged and
up to 24 hours endurance
with the case**

6H

Use Time

0.5H

Earbuds Charging

24H

Charging Case



The charging case features a Micro USB port for efficient charging and an LED power display to show the current battery level. Earbuds charge in 0.5 hours for 6 hours of use, and the case provides up to 24 hours of total playtime.

2. Pairing with a Device

The earbuds will automatically enter pairing mode when taken out of the charging case.

1. Open the charging case and remove both earbuds. They will automatically power on and attempt to pair with each other.
2. On your device (smartphone, tablet, laptop), enable Bluetooth.
3. Search for available Bluetooth devices and select "TYC Wireless Earbuds" (or similar name) from the list.
4. Once connected, you will hear a confirmation tone, and the earbud indicator lights will turn off or flash slowly.
5. The earbuds will automatically reconnect to the last paired device when removed from the case, if Bluetooth is enabled on the device.

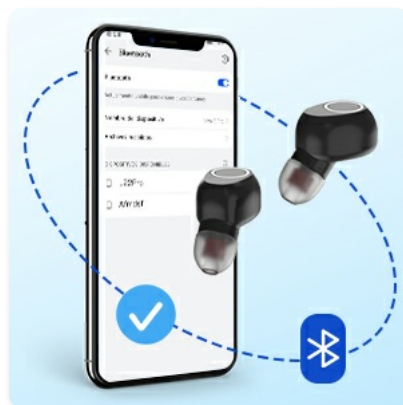


Illustration of the Bluetooth pairing process with a smartphone, showing the earbuds ready for connection.

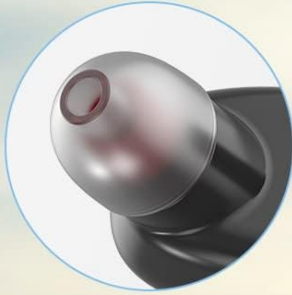
OPERATING INSTRUCTIONS

1. Wearing the Earbuds

For optimal sound quality and comfort, choose the correct size silicone ear tips and insert the earbuds gently into your ear canal, twisting slightly to secure them.

Ergonomically Designed for Earbuds

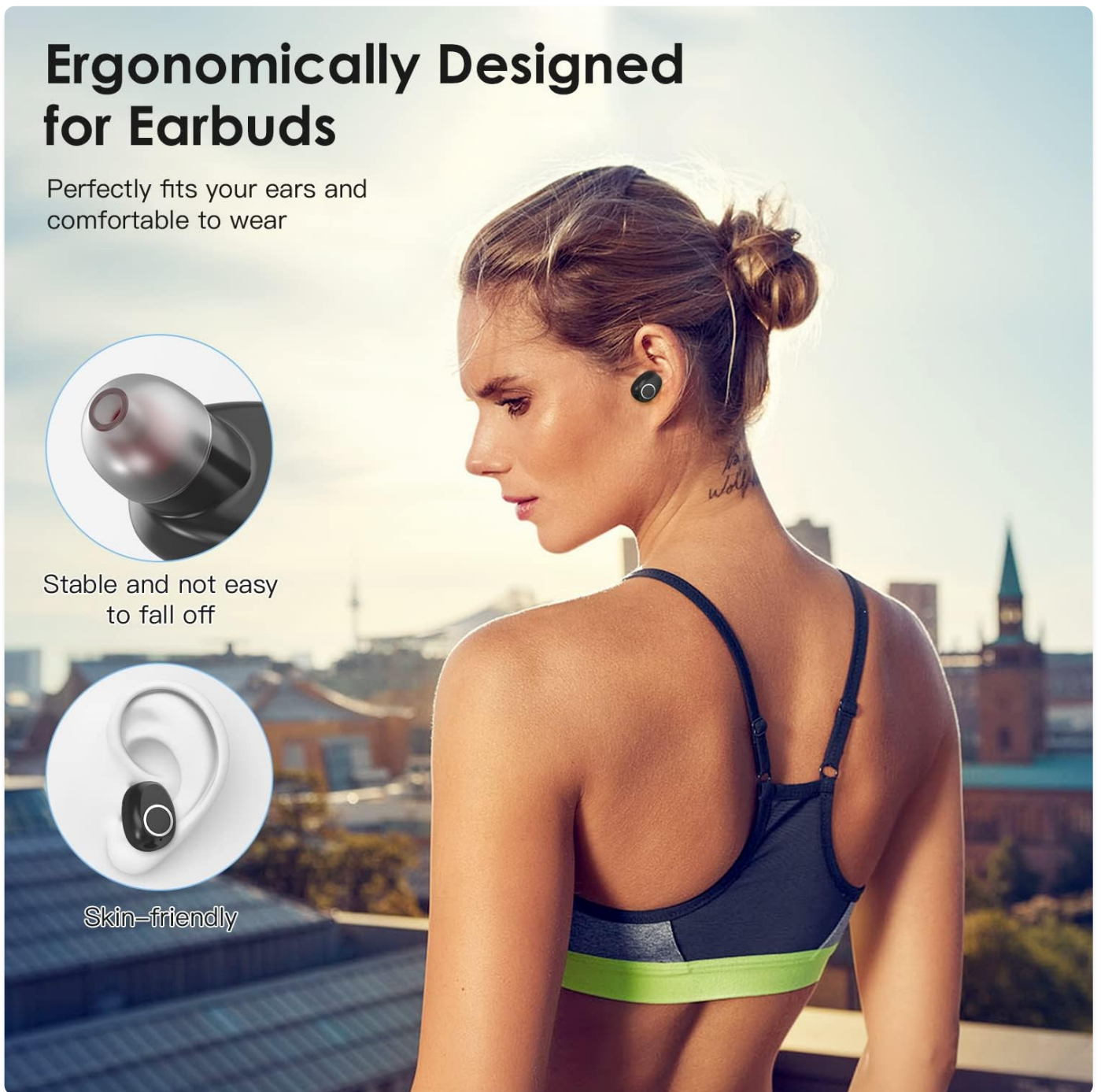
Perfectly fits your ears and comfortable to wear



Stable and not easy to fall off



Skin-friendly



The earbuds are ergonomically designed to fit perfectly and comfortably in your ears, ensuring they are stable and not easy to fall off, with a skin-friendly material.

2. Smart Touch Controls

The earbuds feature intuitive touch controls for managing music playback and calls.

Smart Touch Control

Control music and calls with
your finger tap



Play / Pause



Answer/End



Previous Track



Volume +



Voice Assistant



Hang Up



Next Track



Volume -

Control music and calls with simple finger taps on the earbuds. Functions include Play/Pause, Answer/End Call, Previous Track, Next Track, Volume +, Volume -, and Voice Assistant (Siri).

Action	Function
Single Tap (Left/Right Earbud)	Play/Pause music, Answer/End call
Double Tap (Left Earbud)	Previous Track
Double Tap (Right Earbud)	Next Track
Triple Tap (Left Earbud)	Volume -
Triple Tap (Right Earbud)	Volume +
Long Press (2 seconds)	Activate Voice Assistant (Siri)

Action	Function
Long Press (3 seconds)	Reject Call

MAINTENANCE

1. Cleaning

Regular cleaning helps maintain sound quality and hygiene.

- Use a soft, dry, lint-free cloth to wipe the earbuds and charging case.
- Gently remove any earwax or debris from the ear tips and speaker mesh using a small brush or cotton swab.
- Do not use abrasive cleaners, alcohol, or chemical solvents.

2. Storage

When not in use, store the earbuds in their charging case to protect them and keep them charged.

- Store in a cool, dry place, away from direct sunlight.
- Avoid storing in extremely hot or cold environments.

3. Water Resistance (IPX5)

The earbuds are rated IPX5 waterproof, meaning they are resistant to sweat and light splashes of water. They are not designed for submersion.

IPX5 Waterproof

Enjoy your music and sway
your sweat



Resistant to sweat



Water and rain



The earbuds boast an IPX5 waterproof rating, making them resistant to sweat and water splashes, allowing you to enjoy music during workouts or in light rain.

- Do not intentionally submerge the earbuds in water.
- Do not use them while swimming or showering.
- If they get wet, wipe them dry thoroughly before placing them back in the charging case or charging.

TROUBLESHOOTING

If you encounter issues with your earbuds, try the following solutions:

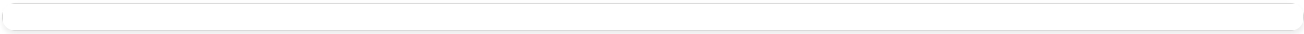
Problem	Possible Solution
---------	-------------------

Problem	Possible Solution
Earbuds not pairing with device	<ul style="list-style-type: none">◦ Ensure earbuds are charged.◦ Turn off and on Bluetooth on your device.◦ Forget the device in your Bluetooth settings and re-pair.◦ Place earbuds back in case, close, then reopen and try again.
Only one earbud working	<ul style="list-style-type: none">◦ Ensure both earbuds are charged.◦ Place both earbuds back in the case, close the lid, wait a few seconds, then open and remove them together.◦ Check if the earbuds are paired to each other (they should automatically).
Low volume or poor sound quality	<ul style="list-style-type: none">◦ Adjust volume on both your device and the earbuds.◦ Ensure ear tips are the correct size and fit snugly.◦ Clean any debris from the speaker mesh.◦ Ensure there are no obstructions between the earbuds and your device.
Earbuds not charging	<ul style="list-style-type: none">◦ Ensure the charging cable is securely connected.◦ Try a different USB power source or cable.◦ Clean the charging contacts on both the earbuds and the case.
Call quality issues (e.g., canned sound)	<ul style="list-style-type: none">◦ Ensure the earbuds are fully charged.◦ Move closer to your connected device to improve signal strength.◦ Check for environmental interference.

SPECIFICATIONS

Feature	Detail
Model Name	TYC Wireless Earbuds (MX-3375)
Connectivity Technology	Wireless (Bluetooth 5.0)
Ear Placement	In Ear
Material	Plastic
Water Resistance Level	IPX5 (Sweatproof, Water-resistant)
Charging Time (Earbuds)	Approx. 0.5 hours
Playtime (Earbuds)	Up to 6 hours (continuous use)
Total Playtime with Case	Up to 30 hours

Feature	Detail
Microphone Format	Built-In
Control Type	Touch Control, Voice Control
Special Features	Sweatproof, Ergonomic, Noise Cancellation
Compatible Devices	Smartphones, Tablets, Laptops, Desktops
Parcel Dimensions	10.2 x 10.1 x 3.5 cm
Item Weight	70 g



The earbuds feature a 13mm dynamic drive unit, providing Hi-Fi stereo sound quality with low latency for synchronized audio, powerful bass, and clear treble.

WARRANTY AND SUPPORT

TYC products are manufactured with high-quality standards. For information regarding warranty coverage, technical support, or service inquiries, please refer to the contact information provided with your purchase or visit the official TYC website. Please retain your proof of purchase for warranty claims.