

## GROHE 291382430

# GROHE 291382430 Grohtherm Smartcontrol Thermostatic Valve Trim User Manual

Model: 291382430 | Brand: GROHE

## 1. INTRODUCTION

This manual provides essential information for the installation, operation, and maintenance of your GROHE 291382430 Grohtherm Smartcontrol Triple Function Thermostatic Valve Trim. This product is designed to enhance your showering experience with precise control and innovative features.

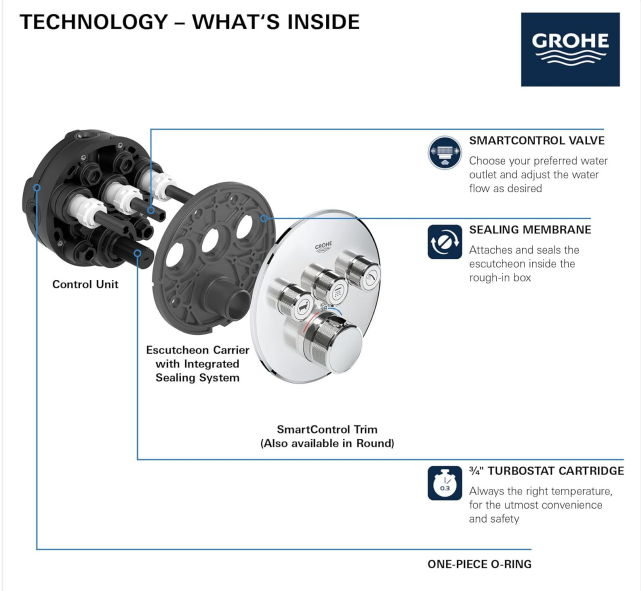
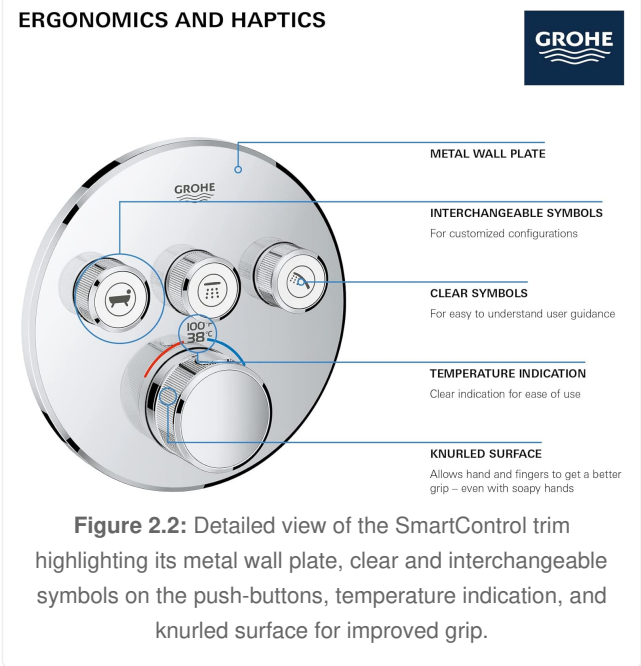
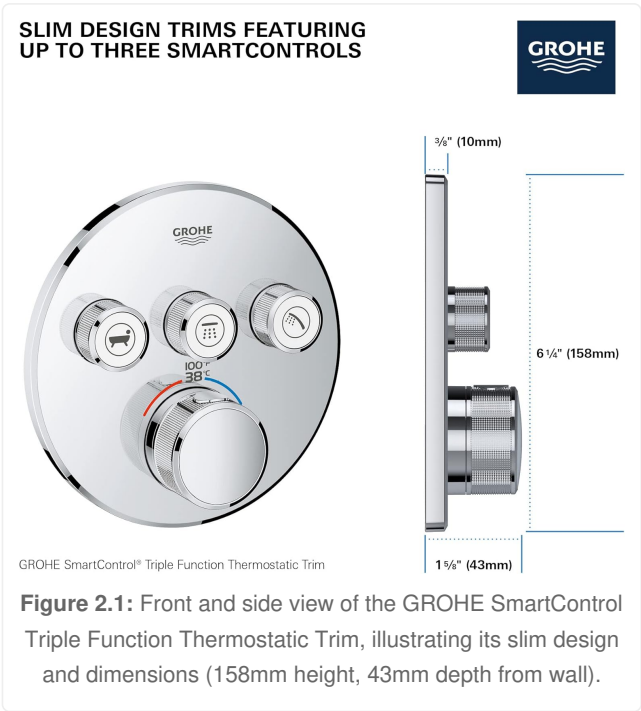
### Key Features:

- **GROHE SmartControl:** Push-button operation for ON/OFF, turn for volume adjustment (from EcoJoy to full flow), with exchangeable symbols for personalized control.
- **GROHE TurboStat:** Compact 3/4" cartridge with wax thermo element ensures consistent water temperature, preventing fluctuations.
- **GROHE SafeStop:** Safety button with manual override at 100°F/38°C to prevent scalding.
- **Multiple Outlets:** Capable of running multiple water outlets simultaneously, offering flexibility for various shower setups (e.g., hand shower, head shower, body sprays, or bath filler).
- **GROHE EcoJoy™:** Water-saving technology providing reduced flow rate without compromising performance.
- **GROHE QuickFix®:** System designed for swift and straightforward installation.
- **Durable Finish:** Features a durable Matte Black finish for lasting aesthetic appeal and easy cleaning.

**Important Note:** This product must be installed in combination with the GROHE Rapido® SmartBox (model 35601000), which is sold separately.

## 2. PRODUCT COMPONENTS

The GROHE Grohtherm Smartcontrol Thermostatic Valve Trim consists of several key components designed for intuitive control and reliable performance.



**Figure 2.3:** Exploded diagram showing the Control Unit, Escutcheon Carrier with Integrated Sealing System, SmartControl Trim, and the 3/4" TurboStat Cartridge. This illustrates the internal technology and how components fit together.

## Main Components:

- **Control Module:** The main interface with push-turn buttons and temperature dial.
- **Push-Buttons:** Three distinct buttons, each with an interchangeable symbol, to activate and control individual water outlets (e.g., bath, shower head, hand shower).
- **Temperature Dial:** A central rotary dial for precise temperature adjustment, featuring a SafeStop override.
- **Escutcheon Carrier:** Provides a secure mounting base and integrates a sealing system.
- **TurboStat Cartridge:** The thermostatic element ensuring constant water temperature.

## 3. SETUP AND INSTALLATION

The GROHE Grohtherm Smartcontrol Valve Trim is designed for straightforward installation with the GROHE Rapido® SmartBox (35601000). Professional installation is recommended to ensure proper function and compliance with local plumbing codes.

### Pre-Installation Requirements:

- Ensure you have the GROHE Rapido® SmartBox (35601000) installed and properly plumbed into your water supply lines.
- Verify that all necessary rough-in plumbing is complete and tested for leaks.
- Confirm that the wall surface is prepared and suitable for mounting the trim.

### Installation Steps (Overview):

1. **Prepare the SmartBox:** Ensure the SmartBox is correctly installed and flushed according to its own instructions.
2. **Attach Escutcheon Carrier:** Secure the escutcheon carrier to the SmartBox, ensuring a tight seal.
3. **Install Control Module:** Carefully place the control module onto the escutcheon carrier.
4. **Mount Trim Plate:** Secure the decorative trim plate over the control module.
5. **Attach Buttons and Dial:** Install the individual push-buttons and the central temperature dial. Ensure symbols are correctly aligned for desired functions.
6. **Test Functionality:** After installation, test all functions (ON/OFF, volume, temperature, and individual outlets) to ensure correct operation and no leaks.

For detailed, step-by-step instructions, please refer to the comprehensive installation guide included with your product or visit the official GROHE website.



**Figure 3.1:** The GROHE SmartControl Thermostatic Valve Trim integrated into a modern bathroom, showcasing its sleek design and how it complements other fixtures.

## 4. OPERATING INSTRUCTIONS

The GROHE Smartcontrol system offers intuitive and precise control over your showering experience.

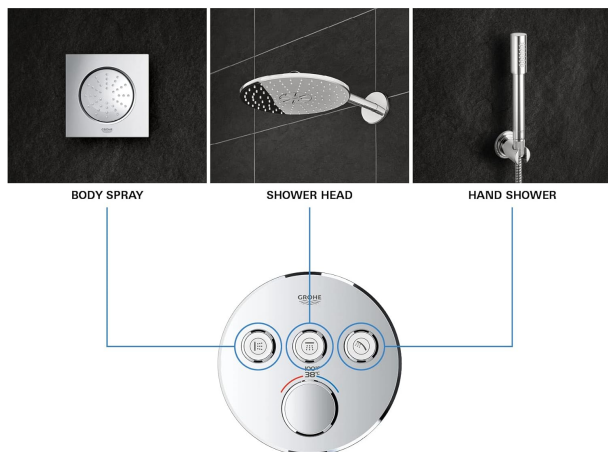
### Temperature Control:

- The central rotary dial controls the water temperature. Turn it clockwise for warmer water and counter-clockwise for cooler water.
- The **GROHE SafeStop** button is integrated into the temperature dial. To exceed 100°F/38°C, press and hold the SafeStop button while turning the dial further.
- Thanks to **GROHE TurboStat**, the set temperature will remain constant throughout your shower, even with pressure fluctuations in the water supply.

### Water Outlet and Volume Control:

- Each of the three push-buttons controls a specific water outlet (e.g., bath, shower head, hand shower). The symbols on the buttons indicate their function.
- **To turn an outlet ON/OFF:** Simply push the corresponding button.
- **To adjust water volume:** Once an outlet is active, turn the corresponding button. Turning it clockwise increases the flow, and counter-clockwise decreases it. The **GROHE EcoJoy™** feature allows for a reduced flow rate.
- **Multiple Outlets:** You can activate and control multiple outlets simultaneously by pushing their respective buttons. Adjust the volume for each independently.

**3 BUTTONS, 3 CONNECTIONS,  
3 LEVELS OF ENJOYMENT**



**Figure 4.1:** The three push-buttons on the SmartControl trim, demonstrating their connection to different water outputs such as a body spray, shower head, and hand shower.



**Figure 4.2:** A close-up of the Matte Black GROHE SmartControl trim, showing the distinct push-buttons and the central temperature control dial with its temperature markings.

## Official Product Video:

**Video 4.1:** An official video from GROHE demonstrating the functionality of Grohtherm Thermostatic Valves Trims with Smart Control, including how to operate the push-buttons and temperature dial.

## 5. MAINTENANCE AND CARE

To maintain the pristine appearance and optimal functionality of your GROHE Grohtherm Smartcontrol Valve Trim, follow these care instructions:

- **Regular Cleaning:** Clean the surface regularly with a soft cloth and mild soap or a non-abrasive cleaner specifically designed for bathroom fixtures.
- **Avoid Harsh Chemicals:** Do not use abrasive sponges, scouring agents, or cleaners containing alcohol, ammonia, hydrochloric acid, or phosphoric acid, as these can damage the finish.
- **Rinse Thoroughly:** After cleaning, rinse the surface thoroughly with clean water and dry with a soft cloth to prevent water spots.
- **Inspect Seals:** Periodically check for any signs of leaks around the trim and connections. Address any issues promptly to prevent water damage.

## 6. TROUBLESHOOTING

If you encounter any issues with your GROHE Grohtherm Smartcontrol Valve Trim, consider the following common troubleshooting steps:

- **No Water Flow:** Ensure the main water supply to your bathroom is turned on. Check if the corresponding push-button for the desired outlet is fully engaged.
- **Incorrect Temperature:** Verify that the temperature dial is set to your desired temperature. If the water is consistently too hot or cold, the thermostatic cartridge may require calibration or servicing. Refer to the detailed installation guide for calibration instructions or contact a qualified plumber.
- **Low Water Pressure/Volume:** Check if the volume control on the push-button is turned to maximum. Inspect shower heads or hand showers for mineral buildup that might restrict flow and clean as necessary.
- **Leaks:** Turn off the water supply immediately. Check all connections for tightness. If leaks persist, professional assistance may be required to inspect internal seals or the SmartBox installation.

For persistent issues or complex problems, it is recommended to consult a qualified plumbing professional or contact GROHE customer support.

## 7. SPECIFICATIONS

Feature	Detail
Brand	GROHE
Model Number	291382430
Material	Metal (Brass handles)
Color	Matte Black
Style	Triple Function
Pattern	Round
Item Dimensions (L x W x H)	1.69 x 6.25 x 6.25 inches

Feature	Detail
Item Weight	3.63 pounds
Inlet Connection Type	Compression
Outlet Connection Type	3/4" NPT
Number of Ports	1
Number of Handles	4 (3 push-buttons + 1 temperature dial)
Installation Method	Wall Mounted
Required Component	GROHE Rapido® SmartBox (35601000) - <i>sold separately</i>

## 8. WARRANTY AND SUPPORT

### Warranty Information:

This GROHE product comes with a **LIMITED** warranty. For specific details regarding coverage, duration, and terms, please refer to the warranty documentation included with your purchase or visit the official GROHE website.

### Customer Support:

For technical assistance, spare parts, or any questions not covered in this manual, please contact GROHE customer support. Contact information can typically be found on the GROHE website or in your product packaging.

You can also visit the [GROHE Store on Amazon](#) for additional product information and resources.