

## Manuals+

[Q & A](#) | [Deep Search](#) | [Upload](#)

manuals.plus /

› [Jensen](#) /

› [Jensen JWM41 Wallmount Stereo User Manual](#)

## Jensen JWM41

# Jensen JWM41 Wallmount Stereo User Manual

AM/FM | DVD | CD | USB | AUX | Bluetooth

## INTRODUCTION

This manual provides detailed instructions for the installation, operation, and maintenance of your Jensen JWM41 Wallmount Stereo. Please read this manual thoroughly before using the unit to ensure proper operation and to prevent damage.



Figure 1: Front view of the Jensen JWM41 Wallmount Stereo, showing the display, control buttons, and disc slot.

## KEY FEATURES

- Digital AM/FM Tuner with 30 preset stations (12 AM/18 FM).
- Bluetooth streaming audio (A2DP) and control (AVRCP) capabilities.
- Front USB port for MP3/WMA playback.

- Slot-type DVD/CD-R/RW and MP3 compatible disc mechanism.
- Supports 2 speaker zones and 4 speaker outputs.
- Electronic Bass, Treble, Balance, and Fader Controls for audio customization.
- Front AUX A/V input (3.5mm), 1 rear audio RCA input, 1 rear RCA output, and 1 RCA composite video output (Note: Does NOT have an HDMI port).
- White LED backlight LCD panel with blue LED buttons.
- Integrated clock with alarm and sleep timer functions.
- Includes a wireless remote control.



**JENSEN** DVD | USB | AUX | Bluetooth® Wallmount Stereo  
**JWM41**

**PRODUCT FEATURES**

- Bluetooth® streaming audio (A2DP) and control (AVRCP)
- Front USB with MP3/WMA playback
- Slot type DVD/CD-R/RW and MP3 compatible
- 30 station presets (18FM, 12AM)
- 2 speaker zones
- 4 speaker outputs
- Front AUX A/V input (3.5mm)
- 1 rear audio RCA input/ 1 rear RCA output
- 1 RCA composite video output
- White LED backlight LCD panel with blue LED buttons
- Clock with alarm and sleep timer
- Remote control included
- 8.25"W x 4.4"H x 6"D



2602 Marina Drive • Elkhart, IN 46514  
www.asaelectronics.com

**DESIGNED TO MOVE [YOU]™**

Figure 2: Diagram highlighting the key features and connectivity options of the JWM41 stereo.

## SETUP AND INSTALLATION

### Important Pre-Installation Notes:

- **Remove Shipping Screws:** Before installation, ensure all shipping screws are removed from the unit. Failure to do

so may prevent proper operation or cause damage.

- **Mounting Screws:** Four M3x20mm screws are required for installation. These screws are not included with the unit.
- **Power Supply:** The unit requires a DC 12 Volts, Negative Ground power supply. Operating voltage range is 11-16 VDC.
- **Speaker Compatibility:** Compatible with 4-8 ohms speakers, with a 4 ohm load minimum.

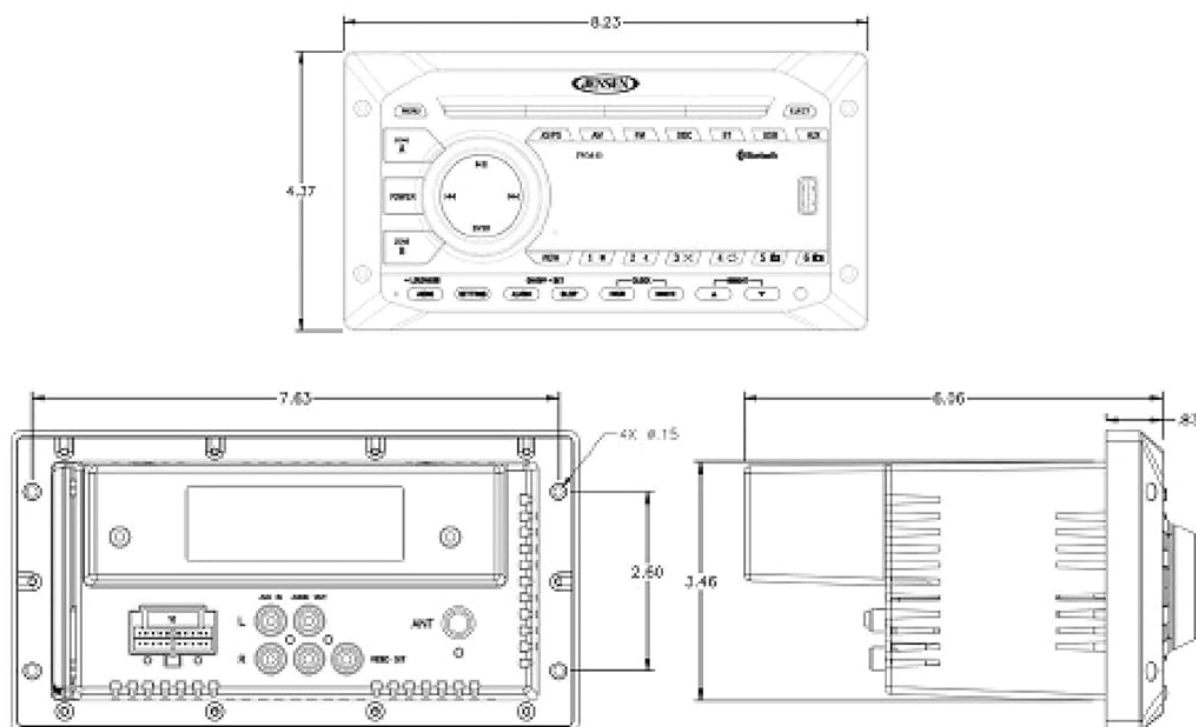
### Mounting Dimensions:

The overall dimensions of the unit are approximately 8.23 inches (W) x 6.56 inches (D) x 4.37 inches (H). The mounting dimensions required are approximately 7.09 inches (W) x 5.24 inches (D) x 3.47 inches (H).



DVD|USB|AUX|Bluetooth® Wallmount Stereo

# JWM41



## Specifications

### General Specifications

Power System		12 V DC (2-Wire)
Operating Voltage Range		10 V to 16 V
Current Draw @ 12V	Idle	112 mA
	Nominal	.5A
	Maximum	6 A
Operating Temperature Range		-4°F to 149°F    -20°C to 65°C
Storage Temperature Range		-22°F to 158°F    -30°C to 70°C
Maximum Relative Humidity		95%
Overall Package Dimensions		8.25" L x 4.4" W x 6" D
Product Weight (unpacked)		3.5 lbs.

### Performance Specifications

FM Sensitivity		2 µV
AM Sensitivity		15 µV
CD Frequency Response		20 Hz to 20 kHz
CD Signal to Noise		73 dB
CD Skip Threshold (Random Freq. Profile)		1.6 g
Compatible CD Formats		CD, CD-R, R/W, MP3, DVD, DVD+-RW
Output Power	RMS	5.8W x 4
	Maximum	24 Watts Total
Total Harmonic Distortion		1%
Applied Test Suite		ASA ES0001
Regulatory Certifications		FCC Part 15B

Features and specifications subject to change without notice.

Figure 3: Detailed diagram showing the dimensions and mounting specifications of the JWM41 stereo.

## Wiring Connections:

Refer to the wiring diagram provided with your unit for specific connection details. Ensure all connections are secure and properly insulated to prevent short circuits.

- **Power:** Connect the positive (+) lead to a switched 12V power source and the negative (-) lead to a good chassis

ground.

- **Speakers:** Connect speakers to the designated speaker outputs, ensuring correct polarity for each speaker and zone.
- **Antenna:** Connect the AM/FM antenna.
- **Auxiliary Inputs/Outputs:** Connect external audio/video devices to the front 3.5mm AUX A/V input or the rear RCA inputs/outputs as needed.

## OPERATING INSTRUCTIONS

---

### Basic Operation:

- **Power On/Off:** Press the **POWER** button to turn the unit on or off.
- **Volume Control:** Use the **VOLUME** knob (or corresponding buttons on the remote) to adjust the sound level.
- **Source Selection:** Press the **AM**, **FM**, **DISC**, **BT** (Bluetooth), **USB**, or **AUX** buttons to select the desired audio source.
- **Zone Control:** Use **ZONE A** and **ZONE B** buttons to control audio output to different speaker zones independently.

### Radio Operation (AM/FM):

- **Tuning:** Use the **TUNE** buttons (**<** and **>**) to manually tune to a station or seek for the next strong station.
- **Preset Stations:** Press **AS/PS** to auto-store or scan preset stations. Use the numeric buttons (1-6) to recall stored stations.

### Disc Playback (DVD/CD):

- **Loading Disc:** Insert a disc into the slot with the label side facing up. The unit will automatically begin playback.
- **Eject Disc:** Press the **EJECT** button to remove a disc.
- **Playback Controls:** Use **PLAY/PAUSE**, **STOP**, **SKIP** (**<** and **>**), and **FAST FORWARD/REVERSE** buttons for disc navigation.

### Bluetooth Operation:

- **Pairing:** Select **BT** mode. On your Bluetooth device, search for "JWM41" and pair.
- **Streaming:** Once paired, you can stream audio from your device to the stereo. Use the stereo's controls or your device to manage playback.

### USB Playback:

- **Connecting USB:** Insert a USB drive into the front USB port. The unit will automatically switch to USB mode and begin playback of compatible files (MP3/WMA).

### Clock and Timer Functions:

- **Setting Clock:** Press **CLOCK**, then use **HOUR** and **MINUTE** buttons to adjust the time.
- **Alarm/Sleep Timer:** Refer to the detailed instructions in the full manual for setting alarm and sleep timer functions.

## MAINTENANCE

---

- **Cleaning:** Use a soft, dry cloth to clean the unit's exterior. Do not use abrasive cleaners or solvents.
- **Disc Care:** Handle discs by their edges. Keep them clean and free of scratches. Use a disc cleaning kit if necessary.
- **Ventilation:** Ensure adequate ventilation around the unit to prevent overheating. Do not block ventilation openings.

## TROUBLESHOOTING

Problem	Possible Cause	Solution
No Power	Loose power connection; Blown fuse; Shipping screws not removed.	Check power wiring; Replace fuse if necessary; <b>Ensure shipping screws are removed.</b>
No Sound	Volume too low; Mute function active; Incorrect speaker wiring; Incorrect zone selection.	Increase volume; Deactivate mute; Check speaker connections and polarity; Verify correct zone is active.
Disc Playback Issues	Dirty or scratched disc; Incorrect disc format; Shipping screws not removed.	Clean or replace disc; Ensure disc format is compatible (CD, CD-R, CD-RW, DVD, DVD+RW, DVD-RW, MPEG-4, VCD, JPEG, MP3, WMA); <b>Ensure shipping screws are removed.</b>
Bluetooth Pairing Failure	Device not in pairing mode; Stereo not in BT mode; Device too far.	Ensure both devices are in pairing mode; Select BT source on stereo; Move device closer to stereo.
USB Not Recognized	Incompatible USB format; Corrupt files; USB drive not properly inserted.	Ensure USB is FAT32 formatted; Check file integrity; Re-insert USB drive.

## SPECIFICATIONS

Category	Specification
Model	JWM41
Power Supply Requirements	DC 12 Volts, Negative Ground
Operating Voltage	11-16 VDC
Overall Dimensions (WxDxH)	8.23 x 6.56 x 4.37 inches
Mounting Dimensions (WxDxH)	7.09 x 5.24 x 3.47 inches
Weight	2.41 pounds (approx.)
FM Tuner Frequency (USA)	87.5 to 107.9 MHz
AM Tuner Frequency (USA)	530-1710 kHz
Amplifier Output Power	6W x 4
Amplifier Output Impedance	Compatible with 4-8 ohms speakers, 4 ohm load minimum

Category	Specification
Disc Compatibility	CD, CD-R, CD-RW, DVD, DVD+RW, DVD-RW, DVD-Video, MPEG-4, VCD, JPEG, CD-DA, MP3, WMA
Connectivity	Bluetooth (A2DP & AVRCP), Front USB, Front AUX A/V (3.5mm), Rear RCA Audio In/Out, Rear RCA Composite Video Out

## WARRANTY AND SUPPORT

For warranty information and technical support, please refer to the documentation provided with your purchase or visit the official Jensen website.

*Note: This product is listed as "Renewed". Please consult your seller or the renewed product's specific warranty terms for details.*