

Manuals+

[Q & A](#) | [Deep Search](#) | [Upload](#)

manuals.plus /

- › [Skyzoo](#) /
- › [Skyzoo 10.1" WiFi Digital Picture Frame User Manual](#)

Skyzoo 10.1" Digital Picture Frame

Skyzoo 10.1" WiFi Digital Picture Frame User Manual

Model: 10.1" Digital Picture Frame

1. INTRODUCTION

This manual provides instructions for the setup, operation, and maintenance of your Skyzoo 10.1" WiFi Digital Picture Frame. Please read this manual thoroughly before using the device to ensure proper functionality and longevity.



Image 1: The Skyzoo 10.1-inch WiFi Digital Picture Frame displaying a family photo, positioned next to a smartphone showing the Frameo app interface. This illustrates the remote sharing capability of the device.

2. PACKAGE CONTENTS

Verify that all items are present in the package:

- Skyzoo 10.1" WiFi Digital Picture Frame
- Power Adapter
- Detachable Stand
- User Manual (this document)

3. SETUP

3.1 Powering On

1. Connect the power adapter to the frame's power input port.
2. Plug the power adapter into a standard electrical outlet.
3. The frame will automatically power on.

3.2 Initial Configuration

1. Upon first use, follow the on-screen prompts to select your language and time zone.
2. Connect the frame to your home Wi-Fi network. This is essential for remote photo and video sharing.
3. Download the free **Frameo App** on your smartphone (available for Android and iOS devices).
4. Follow the app's instructions to pair your smartphone with the digital picture frame.

Instant Wireless Sharing



Image 2: This image illustrates the instant wireless sharing capability of the Skyzoo digital picture frame. A person is shown using a smartphone to send photos to the frame, emphasizing the ease of sharing content remotely.

3.3 Frame Orientation

The frame includes a detachable holder, allowing you to position it in either portrait or landscape mode. The display supports auto-rotation to adjust the image orientation accordingly.

Auto-Rotation

Automatically rotate the orientation of photos



Image 3: Two Skyzoo digital picture frames are shown, one in landscape and one in portrait orientation, both displaying the same family photo. This highlights the auto-rotation feature, which automatically adjusts the image to fit the frame's orientation.

4. OPERATING INSTRUCTIONS

4.1 Touchscreen Navigation

The Skyzoo digital picture frame features a responsive touchscreen for intuitive navigation through menus and settings. Tap, swipe, and pinch gestures are supported for various functions.

4.2 Sharing Photos and Videos

- **Via Frameo App:** Use the Frameo App on your smartphone to send photos and videos directly to the frame. Videos sent via the app have a maximum duration of 15 seconds.
- **Via Micro SD Card or Micro USB Drive:** For longer videos or bulk transfers, insert a micro SD card or micro USB drive into the designated slot. The frame supports various image and video formats.

Recording Wonderful Moments



Built-In 16GB



Image Format



Video Format

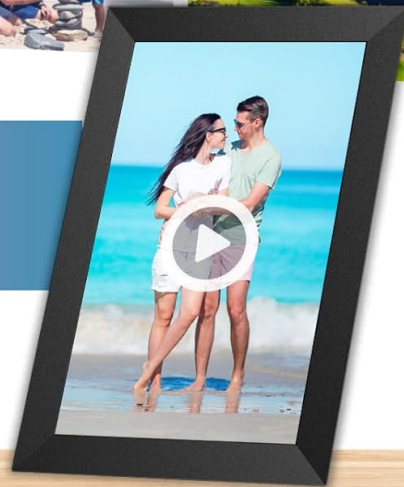


Image 4: This image displays a collage of diverse photos and videos, illustrating the frame's capability to store and present various media types. It also highlights the 16GB built-in memory and support for both image and video formats.

4.3 Adding Friends and Family

Through the Frameo App, you can invite friends and family to share their photos and videos directly to your frame. This allows for private and secure sharing of moments from anywhere.

4.4 Custom Settings

The frame offers various customizable settings to enhance your viewing experience:

- **Play Order:** Adjust the sequence in which photos and videos are displayed.
- **Image Zooming:** Zoom in on photos for detailed viewing.
- **Hide/Publish Images:** Manage which images are visible on the frame.
- **Display Caption:** Show captions associated with your media.
- **Adjustable Brightness:** Control the screen brightness for optimal viewing in different lighting conditions.
- **Sleep Mode:** Schedule the frame to turn off and on automatically to conserve energy.

4.5 Reaction Feature

The frame includes a reaction feature, allowing the frame owner to send emoji reactions back to the sender of a photo or video, providing instant feedback.

Funny Reaction Feature

Frame owner can send funny emojis back to the sender, let them know your feeling instantly

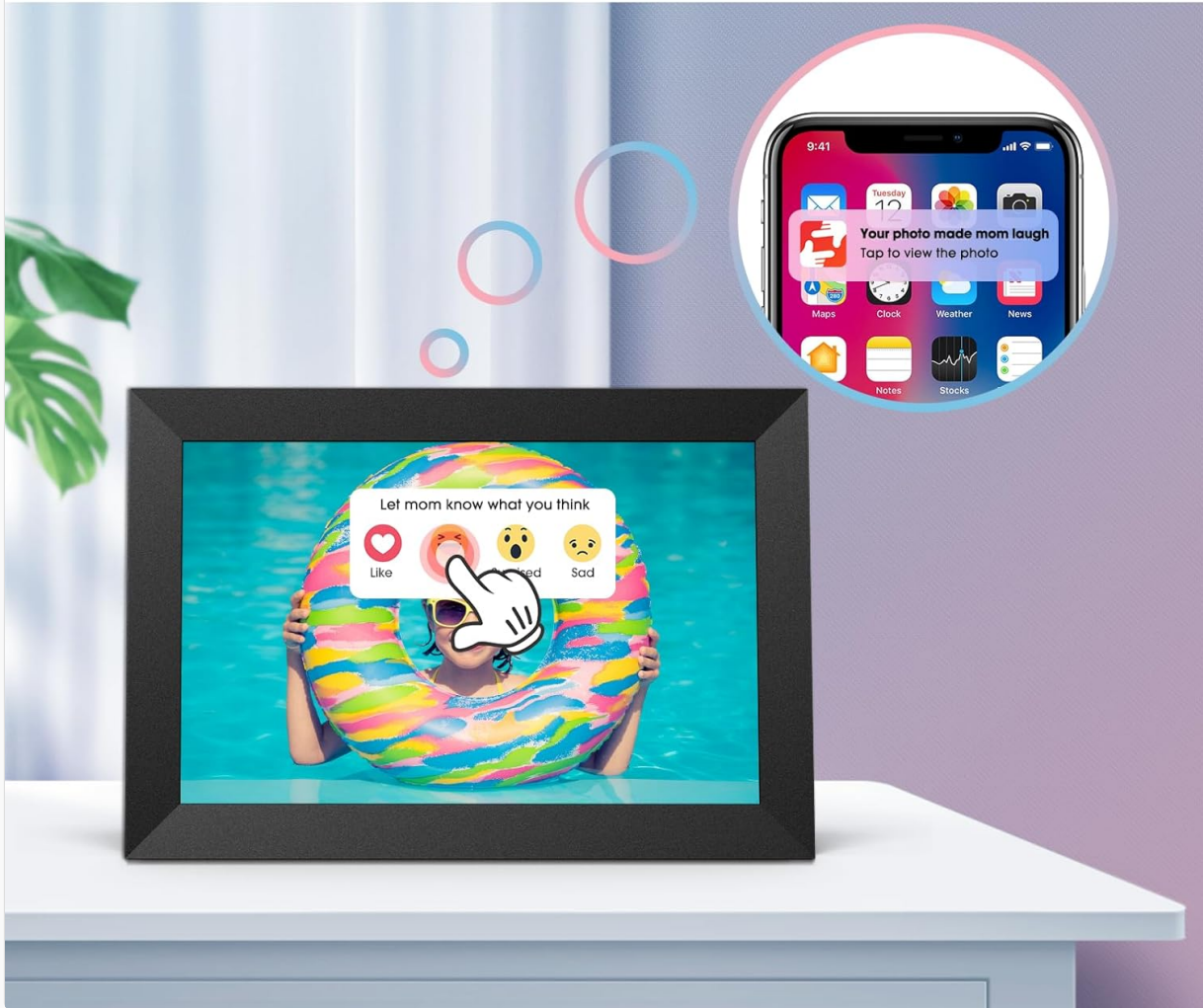


Image 5: This image demonstrates the "Funny Reaction Feature" of the Skyzoo digital picture frame. The frame displays a photo with interactive emoji reaction options, while a smartphone shows a notification indicating a reaction has been sent, allowing for instant feedback between users.

5. MAINTENANCE

5.1 Cleaning the Frame

- Use a soft, dry, lint-free cloth to clean the screen and frame.
- For stubborn smudges, lightly dampen the cloth with water or a screen-safe cleaning solution.
- Avoid using abrasive cleaners, solvents, or aerosol sprays directly on the frame.

5.2 Software Updates

Periodically check for software updates through the frame's settings menu to ensure optimal performance and access to new features. Ensure the frame is connected to Wi-Fi during updates.

6. TROUBLESHOOTING

6.1 No Power

- Ensure the power adapter is securely connected to both the frame and a working electrical outlet.
- Try a different outlet to rule out power source issues.

6.2 Wi-Fi Connectivity Issues

- Verify that your Wi-Fi router is functioning correctly and within range.
- Check the Wi-Fi settings on the frame to ensure the correct network and password are entered.
- Restart the frame and your Wi-Fi router.

6.3 Photos/Videos Not Displaying

- Ensure the media files are in supported formats (e.g., JPEG for images, MP4 for videos).
- If using a micro SD card or USB drive, ensure it is properly inserted and recognized by the frame.
- Check the Frameo App for any upload errors or pending transfers.

6.4 Touchscreen Unresponsive

- Restart the frame.
- Ensure the screen is clean and free of debris or moisture.

7. SPECIFICATIONS

Feature	Specification
Brand	Skyzoo
Model	10.1" Digital Picture Frame
Screen Size	10.1 Inches
Resolution	1280x800
Internal Memory	16GB
External Storage	Micro SD Card, Micro USB Drive
Connectivity	Wi-Fi
Compatible Devices	Smartphone (via Frameo App)
Color	Black

8. WARRANTY AND SUPPORT

For warranty information and technical support, please refer to the contact details provided with your purchase documentation or visit the official Skyzoo website. Keep your purchase receipt as proof of purchase.

9. OFFICIAL PRODUCT VIDEOS

No official seller videos were found for this product in the provided data.

