

XENOCAM A6504LME-5

XENOCAM A6504LME-5 4-Channel 5M-N/1080N Hybrid DVR Instruction Manual

Model: A6504LME-5

1. INTRODUCTION

This manual provides detailed instructions for the installation, operation, and maintenance of your XENOCAM A6504LME-5 4-Channel 5M-N/1080N Hybrid Digital Video Recorder (DVR). This DVR is a versatile 5-in-1 system compatible with AHD, TVI, CVI, analog, and IP cameras, offering advanced H.265 video compression for efficient surveillance. Please read this manual thoroughly before using the device to ensure proper setup and functionality.

2. PRODUCT FEATURES

- **5-in-1 Hybrid Compatibility:** Supports CVBS 5MP/4MP/1080P AHD, 1MP/2MP TVI, 1MP/2MP CVI, IP, and 960H cameras.
- **High Definition Video:** Supports 5M-N/1080N resolution (1280x1920) for clear video capture.
- **Advanced H.265 Compression:** Provides smoother video recordings and optimizes hard drive storage space.
- **Multiple Video Outputs:** Equipped with HDMI and VGA ports, supporting up to 1080p output.
- **P2P Remote Access:** View live or playback video remotely via the XMeye app on Android and iOS devices by scanning a QR code.
- **Motion Detection & Alerts:** Configurable motion detection zones with instant email and app notifications.
- **Flexible Recording Modes:** Manual, alarm, motion detection, and scheduled recording options.
- **Multiple Backup Options:** Network, USB portable HDD, and USB DVD-RW.

3. PACKAGE CONTENTS

Verify that all items listed below are included in your package:

- 1 x XENOCAM 4-Channel 5MP-N Digital Video Recorder (HDD not included)
- 1 x Power Adapter
- 1 x USB Mouse

- 1 x User Manual
- Mounting Screws for HDD (typically included)



Image: The XENOCAM A6504LME-5 DVR unit shown with its power adapter, USB mouse, user manual, and mounting screws.

4. SETUP

4.1 Hardware Installation

1. **Install Hard Drive (HDD):** Open the DVR casing. Connect a SATA hard drive (up to 6TB, not included) to the internal SATA power and data cables. Secure the HDD using the provided screws.
2. **Connect Cameras:** Connect your AHD, TVI, CVI, or analog cameras to the BNC video input ports on the rear panel. For IP cameras, ensure they are on the same network as the DVR.
3. **Connect Display:** Connect a monitor to the DVR's HDMI or VGA output port.
4. **Connect Mouse:** Plug the USB mouse into one of the USB ports on the DVR.
5. **Connect Network:** For remote access and network features, connect an Ethernet cable from the DVR's RJ-45 port to your router or network switch.
6. **Connect Power:** Plug the power adapter into the DVR's power input and then into an electrical outlet.



Image: Front and rear views of the XENOCAM A6504LME-5 DVR, showing control buttons, USB ports, BNC video inputs, HDMI/VGA outputs, and network port.

4.2 Initial Power-On and Configuration

1. Power on the DVR. The system will boot up and display on the connected monitor.
2. Upon first boot, you will be prompted to set a password for the default 'Admin' user. This is crucial for system security.
3. Follow the on-screen wizard to configure basic settings such as date, time, network settings, and video output resolution.
4. Format the installed hard drive through the system settings menu to ensure it is ready for recording.

5. OPERATING INSTRUCTIONS

5.1 Menu Navigation

Use the connected USB mouse to navigate the DVR's graphical user interface (GUI). Right-click to access the main menu, and use the left-click to select options and confirm settings. The front panel buttons (ESC, MENU, OK, directional arrows) can also be used for navigation.

5.2 Recording Modes

The DVR supports various recording modes:

- **Manual Recording:** Start and stop recording manually.
- **Scheduled Recording:** Set specific times for continuous recording.
- **Motion Detection Recording:** Records only when motion is detected in the camera's view.
- **Alarm Recording:** Records when an external alarm input is triggered.

Configure these settings in the 'Record' section of the main menu.

5.3 Playback

Access recorded footage through the 'Playback' option in the main menu. You can search by date, time, and event type (e.g., motion detection). Use the on-screen controls to play, pause, fast forward, and rewind.

5.4 Backup Procedures

To back up important footage:

- **USB Backup:** Connect a USB flash drive or external hard drive to a USB port. Select the desired footage in the 'Backup' menu and transfer it to the USB device.
- **Network Backup:** Footage can be downloaded to a PC via the network using the CMS/VMS software.
- **USB DVD-RW:** Connect a compatible USB DVD-RW drive for burning footage to discs.

6. REMOTE ACCESS (P2P)

6.1 Mobile App Installation

To access your DVR remotely, download the 'XMeye' app on your smartphone or tablet (Android/iOS).

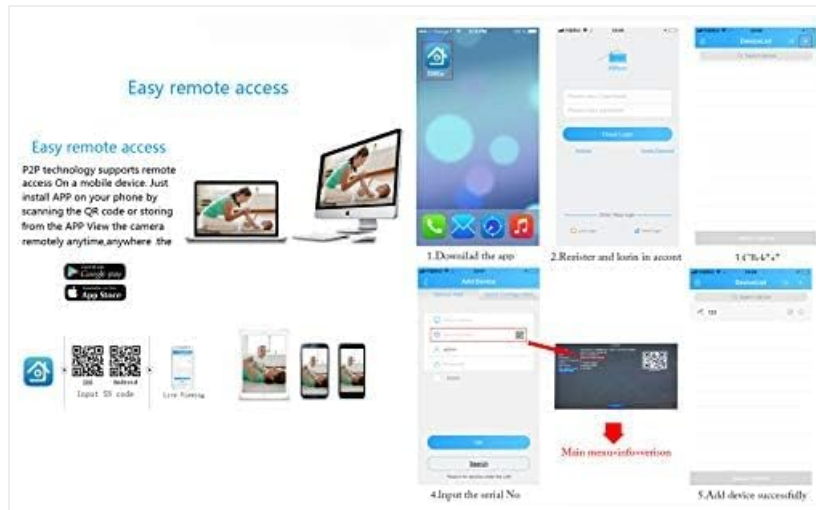


Image: Visual guide for downloading the XMeye app and the steps involved in registering an account and adding a device using a QR code.

6.2 Device Pairing

1. Ensure your DVR is connected to the internet.
2. Open the XMeye app and register a new account or log in.
3. Select 'Add Device' and choose the option to scan a QR code.
4. Locate the unique QR code on your DVR (usually found in the network settings or device info menu) and scan it with the app.
5. Follow the prompts to add the device. Once successfully added, you can view live feeds and playback recordings from your mobile device.

7. MOTION DETECTION & ALERTS

7.1 Configuring Motion Detection

To set up motion detection:

1. Navigate to the 'Alarm' or 'Motion Detection' settings in the main menu.
2. Select the camera channel you wish to configure.
3. Define the motion detection area by drawing a grid on the camera's view. You can customize sensitivity levels.
4. Enable motion detection recording for the selected channel.



Image: Illustration showing how motion detection triggers recording, with a timestamp indicating the start of recording upon detecting movement.

7.2 Setting Up Alerts

Once motion detection is configured, you can set up alerts:

- **Email Alerts:** Enter your email address and SMTP server details in the network settings to receive email notifications with snapshots when motion is detected.
- **App Push Notifications:** Ensure push notifications are enabled for the XMeye app on your mobile device to receive instant alerts.

8. MAINTENANCE

- **Regular Cleaning:** Keep the DVR free from dust. Use a soft, dry cloth to clean the exterior. Do not use liquid cleaners.
- **Firmware Updates:** Periodically check the manufacturer's website for firmware updates to ensure optimal performance and security. Follow update instructions carefully.
- **Hard Drive Health:** Monitor the health of your hard drive through the DVR's system information. Replace the HDD if signs of failure appear.
- **Password Security:** Regularly change your DVR's password and use strong, unique combinations to prevent unauthorized access.

9. TROUBLESHOOTING

Issue	Possible Cause	Solution
No display on monitor	Loose cable connection, incorrect video output settings, monitor issue.	Check HDMI/VGA cable connections. Ensure monitor is powered on and set to correct input. Try a different monitor or cable.
No recording	No HDD installed, HDD not formatted, recording schedule not set, motion detection not configured.	Install and format an HDD. Check recording schedules and motion detection settings.
Cannot access remotely	DVR not connected to network, incorrect network settings, app not configured correctly.	Ensure Ethernet cable is connected. Verify network settings (DHCP/Static IP). Re-add device in XMeye app. Check router firewall settings.

Issue	Possible Cause	Solution
Forgot password	Password lost.	Contact XENOCAM support for password reset procedures. Do not attempt unauthorized resets.
IP Camera not detected	IP camera not ONVIF compatible, incorrect network settings, camera not powered.	Ensure IP camera is ONVIF compliant. Verify camera and DVR are on the same network segment. Check camera power.

10. SPECIFICATIONS

Feature	Detail
Model Number	A6504LME-5
Video Input	4-channel BNC input
Video Output	HDMI, VGA (up to 1080p)
Audio Input/Output	1-channel RCA input / 1-channel RCA output
Video Compression	H.265
Preview Resolution	4x5M-N@12fps (6-in-1); 4x4M-N@15fps (6-in-1); 8x1080p (6-in-1)
Recording Resolution	4x5M-N@8fps (6-in-1); 4x4M-N@8fps (6-in-1); 8x1080p@15fps (6-in-1)
Playback Resolution	2x5M-N@8fps (6-in-1); 4x4M-N@8fps (6-in-1); 4x1080p@15fps (6-in-1)
HDD Interface	1 SATA port (supports up to 6TB HDD)
Network Interface	1 x RJ-45 10M/100Mbps Ethernet port
USB Interface	2 x USB 2.0 ports
DVR Input Modes	DVR Mode: 4x5M-N; 4x1080p Hybrid Mode: 2ch 1080p AHD + 2ch 1080p IP NVR Mode: 8x1080p; 4x5M
Compatible Devices	Smartphone, Tablet (for remote viewing)
PC Software	CMS, VMS
IP Camera Compatibility	ONVIF only



Image: Diagram illustrating the efficiency of H.265 compression compared to normal compression, showing clearer image quality with less bandwidth usage.

11. WARRANTY INFORMATION

Warranty terms and conditions for the XENOCAM A6504LME-5 DVR are subject to the policies of the retailer and manufacturer at the time of purchase. Please refer to your purchase documentation or contact your seller for specific warranty details. Keep your proof of purchase for any warranty claims.

12. SUPPORT

For technical assistance, troubleshooting beyond this manual, or inquiries regarding your XENOCAM A6504LME-5 DVR, please contact the seller or manufacturer directly. Refer to the contact information provided with your product packaging or on the official XENOCAM website.