

Manuals+

[Q & A](#) | [Deep Search](#) | [Upload](#)

manuals.plus /

- › [Epson](#) /
- › [Epson Perfection V600 Photo Scanner User Manual](#)

Epson V600

Epson Perfection V600 Photo Scanner User Manual

Model: V600

[Introduction](#) [Safety Information](#) [What's in the Box](#) [Setup](#) [Operating](#)
[Instructions](#) [Maintenance](#) [Troubleshooting](#) [Specifications](#) [Support](#)

1. INTRODUCTION

The Epson Perfection V600 Photo Scanner is designed for converting various media types, including 35mm and medium-format slides, film negatives, and photographic prints, into high-resolution digital files. This scanner offers advanced features such as Digital ICE technology for dust and scratch removal, ensuring optimal image quality. With its versatile capabilities, the V600 is an ideal tool for archiving and restoring your cherished memories.



Figure 1: Front view of the Epson Perfection V600 Photo Scanner.

At a glance

Main features



Photos



Documents



USB Powered



Film Scanning

Additional features

- ✓ 6400 x 9600 dpi resolution
- ✓ Digital ICE® Technologies
- ✓ Built-in Transparency Unit
- ✓ Scan 35mm slides and negatives
- ✓ Medium-format panoramic film
- ✓ ReadyScan® LED
- ✓ One-touch Easy Photo Fix®
- ✓ FineReader® Sprint Plus OCR
- ✓ Scan, copy, scan to email/PDF
- ✓ ArcSoft® PhotoStudio®



V600

***SCROLL DOWN TO “FROM THE MANUFACTURER” TO LEARN MORE.**

Figure 2: Overview of main and additional features of the Epson Perfection V600, including photo and document scanning, USB power, film scanning, 6400 x 9600 dpi resolution, Digital ICE Technologies, built-in Transparency Unit, and software features.

2. SAFETY INFORMATION

Please read all safety instructions before using the scanner to prevent injury or damage to the device. Keep this manual for future reference.

- Do not block or cover the ventilation slots.
- Use only the power adapter and cable supplied with the scanner.
- Do not expose the scanner to rain, moisture, or excessive humidity.
- Avoid placing the scanner on an unstable surface.
- Do not attempt to service the scanner yourself. Refer all servicing to qualified service personnel.
- Unplug the scanner from the power outlet before cleaning.

3. WHAT'S IN THE BOX

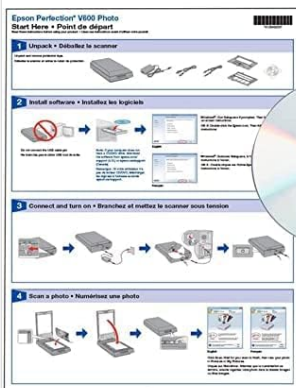
Verify that all components are present before proceeding with the setup.

- Epson Perfection V600 Photo Scanner
- Transparency Unit (built into lid)
- 35mm Film Holder
- Mounted Slides Holder
- 6x22 cm Medium-format Film Holder
- Scanner Installation CD-ROM (for drivers and software)
- Scanner Setup Poster
- Hi-Speed USB 2.0 Cable
- AC Power Adapter and Cord

In the box



Epson® Perfection® V600 Photo Color Scanner
with built-in Transparency Unit



Start Here poster
and Software CD



Hi-Speed USB
2.0 cable

AC adapter,
power cable



Film holders for
35mm film, mounted
slides and 6 x 22 cm
medium-format film

Figure 3: All items included in the Epson Perfection V600 Photo Scanner package, including the scanner, film holders, installation CD, USB cable, and power adapter.

4. SETUP

4.1 Unpacking and Placement

1. Carefully remove the scanner and all accessories from the packaging.
2. Place the scanner on a flat, stable surface near your computer. Ensure there is adequate space around the scanner for ventilation and cable connections.
3. Remove any protective tapes or packing materials from the scanner.

4.2 Connecting the Scanner

1. Connect the AC power adapter to the scanner's power input port (DC24V).
2. Plug the power cord into a standard electrical outlet.
3. Connect one end of the Hi-Speed USB 2.0 cable to the USB port on the scanner.
4. Connect the other end of the USB cable to an available USB port on your computer.



Figure 4: Rear view of the scanner, highlighting the DC24V power input and the Hi-Speed USB 2.0 port for connection to a computer.

4.3 Installing Software and Drivers

1. Insert the Scanner Installation CD-ROM into your computer's CD/DVD drive.
2. Follow the on-screen instructions to install the scanner drivers and bundled software (Epson Scan, ArcSoft PhotoStudio, Easy Photo Fix, etc.). If your computer does not have a CD/DVD drive, or for the latest drivers, visit the official Epson support website and download the necessary software for your operating system.
3. Restart your computer if prompted after the installation is complete.

5. OPERATING INSTRUCTIONS

5.1 Powering On and Basic Scan

1. Press the Power button on the scanner. The ReadyScan LED technology allows for immediate operation without warm-up time.
2. Place your document or photo face-down on the scanner glass, aligning it with the corner guide.
3. Close the scanner lid gently.
4. Open the Epson Scan software on your computer.
5. Select your desired scan mode (e.g., Home Mode, Professional Mode) and adjust settings such as resolution, color, and destination.
6. Click the "Scan" button in the software to begin scanning.

5.2 Scanning Film and Slides

The V600 features a built-in Transparency Unit (TPU) in the lid for scanning film and slides.

1. Open the scanner lid. Locate the Transparency Unit cover on the underside of the lid and remove it.
2. Select the appropriate film holder (35mm film strip, 35mm mounted slides, or 6x22 cm medium-format film).
3. Place your film or slides into the film holder, ensuring they are correctly oriented.
4. Place the film holder onto the scanner glass, aligning it with the guides.
5. Close the scanner lid.
6. In the Epson Scan software, select "Film" as the Document Type and choose the appropriate film type (e.g., Color Negative Film, Positive Film).
7. Utilize features like Digital ICE for Film to automatically remove dust and scratches from your scans.
8. Preview and scan your film.



Figure 5: The scanner with its lid open, showing a film holder placed on the scanning bed, ready for film or slide scanning.

5.3 Using One-Touch Buttons

The scanner features four customizable buttons for quick access to common functions:

- **Scan Button:** Initiates a scan based on predefined settings.
- **Copy Button:** Scans a document and sends it to a connected printer for direct copying.
- **E-mail Button:** Scans a document or photo and attaches it to a new email message.
- **PDF Button:** Scans a document and saves it as a PDF file.



Figure 6: Top view of the scanner, indicating the location and function of the one-touch buttons for scanning, copying, emailing, and PDF creation.

6. MAINTENANCE

6.1 Cleaning the Scanner Glass

1. Turn off the scanner and unplug the power cord.
2. Open the scanner lid.
3. Gently wipe the scanner glass surface with a soft, lint-free cloth dampened with a small amount of glass cleaner (non-abrasive). Do not spray cleaner directly onto the glass.
4. Wipe the Transparency Unit glass (if applicable) in the lid as well.
5. Allow the glass to dry completely before closing the lid or powering on the scanner.

6.2 Cleaning the Exterior

Wipe the exterior of the scanner with a soft, dry cloth. Do not use strong detergents or abrasive cleaners.

7. TROUBLESHOOTING

Problem	Possible Cause	Solution
Scanner does not turn on.	Power cord not connected; power outlet not working.	Ensure power cord is securely connected to scanner and outlet. Try a different outlet.
Scanner not recognized by computer.	USB cable loose; drivers not installed or corrupted.	Check USB cable connection. Reinstall scanner drivers from the CD-ROM or Epson website. Try a different USB port.
Scanned images have lines or dust.	Scanner glass or film holder is dirty.	Clean the scanner glass and film holders as described in the Maintenance section. Use Digital ICE technology for film scans.
Colors in scanned images are incorrect.	Incorrect software settings; faded original.	Adjust color settings in Epson Scan software. Use Easy Photo Fix for faded originals.

8. SPECIFICATIONS

Feature	Detail
Scanner Type	Flatbed color image scanner
Optical Resolution	6400 dpi
Hardware Resolution	6400 x 9600 dpi
Maximum Resolution	12,800 x 12,800 dpi
Color Bit Depth	48-bits per pixel internal / external
Grayscale Bit Depth	16-bits per pixel internal / external
Effective Pixels	54,400 x 74,880 (6400 dpi)
Maximum Scan Area	8.5" x 11.7" (Reflective); TPU: 2.7" x 9.5" (Transparency)
Light Source	ReadyScan LED technology
Optical Density	3.4 Dmax

Feature	Detail
Supported Film Size (Transparency Adapter)	35 mm mounted slides (4 frames), 35 mm film strips (12 frames), Medium format strips 6x22 cm (2 frames)
Dust/Scratch Removal	Digital ICE for Film, Digital ICE for Prints
Image Restoration	Epson Easy Photo Fix
Standard Connectivity	Hi-Speed USB 2.0
Dimensions (W x D x H)	11" x 19" x 4.6"
Weight	9 lb (Product Weight), 12.38 pounds (Shipping Weight)



Figure 7: Visual representation of the scanner's dimensions: 19.0" D x 11.0" W x 4.6" H.

9. WARRANTY AND SUPPORT

9.1 Warranty Information

Epson products typically come with a limited warranty. Please refer to the warranty card included with your product or visit the official Epson website for detailed warranty terms and conditions specific to the Epson Perfection V600 Photo Scanner. Keep your proof of purchase for warranty claims.

9.2 Customer Support

For technical assistance, driver downloads, FAQs, or further support, please visit the official Epson support website or contact Epson customer service. You can find contact information and support resources at [epson.com/support](https://www.epson.com/support).