

Jeecoo M20

Jeecoo M20 Bluetooth Computer Speakers Instruction Manual

Model: M20

INTRODUCTION

Thank you for choosing the Jeecoo M20 Bluetooth Computer Speakers. This manual provides essential information for setting up, operating, and maintaining your speakers. Please read it thoroughly before use to ensure optimal performance and longevity of your device.

KEY FEATURES

- **Unique & Custom Design:** Combine or separate the speakers via the slideway at the base to customize your desk setup.
- **Clear & Crisp Stereo Sound:** Dynamic 10W-output drive units (5W*2) provide rich sound for music, movies, and gaming.
- **Bluetooth V5.3 Connectivity:** Easily connect to cellphones, tablets, and other mobile devices.
- **Gradient RGB Lighting:** Enhance your audio-visual experience with gradually changing colors. Lighting can be turned off.
- **Multi-control Knob:** Long press for power ON/OFF, single click for RGB lighting, double click to switch between Bluetooth/Wired Mode, and rotary knob for volume control.
- **Single Cable for Audio & Power:** USB cable transmits both power and audio when connected to computers/laptops.
- **Plug & Play:** No extra software required for wired mode.
- **Broad Compatibility:** Works with PCs, laptops (wired mode), and Bluetooth-enabled mobile devices.

SETUP INSTRUCTIONS

1. Unpacking and Placement

Carefully remove the speakers from their packaging. You have two primary setup options:

1. **Combined Soundbar:** Slide the two speaker units together using the integrated slideway at the base until they form a single soundbar.
2. **Separated Stereo Speakers:** Place the two speaker units individually on either side of your monitor or device for a stereo sound experience.

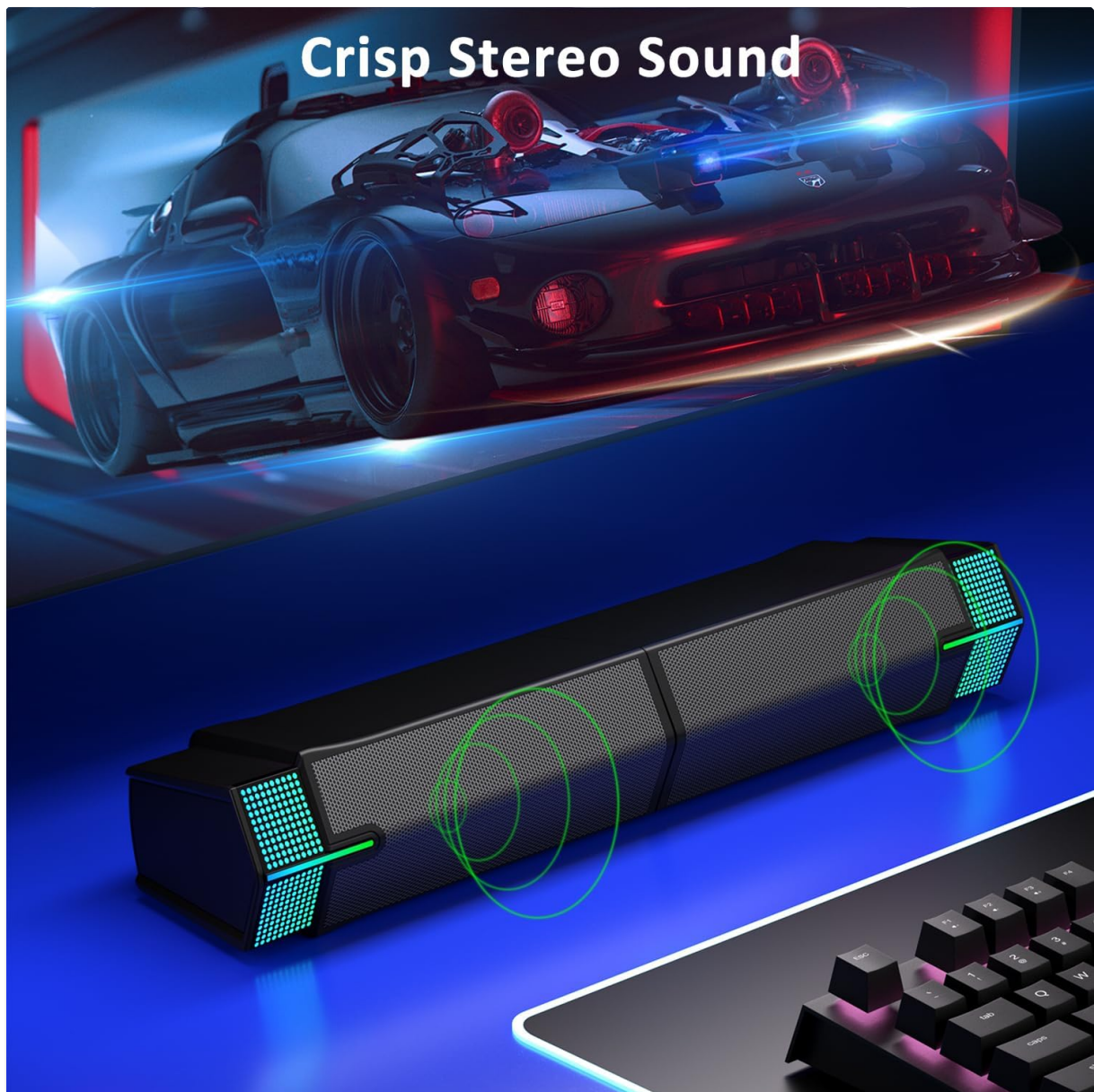


Image: The Jeecoo M20 speakers demonstrating their versatile design, allowing them to be used as a single soundbar or two separate stereo speakers.

2. Connecting the Speakers

The Jeecoo M20 speakers utilize a single USB cable for both power and audio transmission when in wired mode.

1. Connect the USB plug into an available USB port on your computer, laptop, or a compatible USB power adapter.
2. If using Bluetooth mode, ensure the product is still connected to a power supply via the USB cable.
3. For wired audio, ensure your computer's audio settings are configured to output sound through the newly connected USB audio device.

Bluetooth & Wired Connection

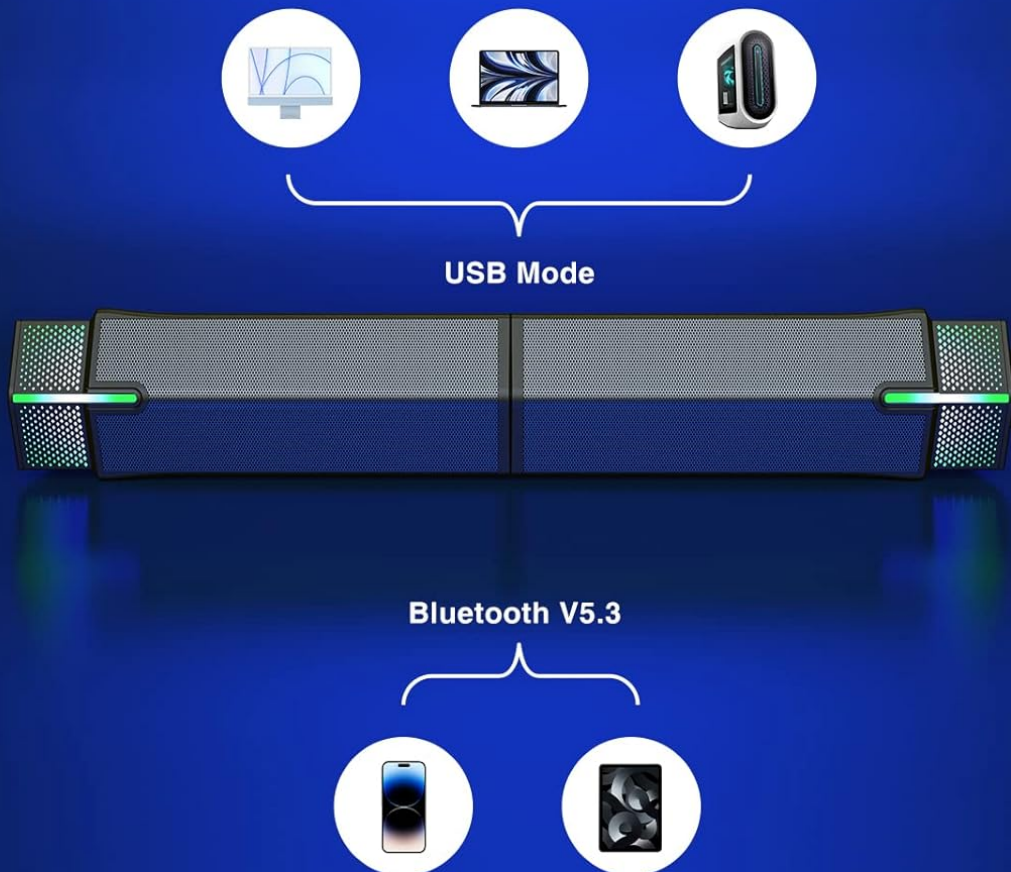


Image: A visual representation of the Jeechoo M20 speakers' connectivity, illustrating both USB wired mode for PCs, laptops, and tablets, and Bluetooth V5.3 mode for smartphones and other mobile devices.

OPERATING INSTRUCTIONS

1. Multi-control Knob Functions

The main control knob on the speaker unit provides multiple functions:

- **Power ON/OFF:** Long press the knob for 2 seconds.
- **Change RGB Lighting:** Single click the knob to cycle through different gradient RGB lighting modes or turn off the lighting.
- **Switch Mode (Bluetooth/Wired):** Double click the knob to toggle between Bluetooth and wired (USB) audio input modes.
- **Volume Control:** Rotate the knob to adjust the volume up or down.



Image: A detailed view of the multi-control knob on the Jeecoo M20 speaker, highlighting its functions for power, LED colors, Bluetooth/Wired mode switching, and volume adjustment.

2. Bluetooth Pairing

To pair your device via Bluetooth:

1. Ensure the speakers are powered on and in Bluetooth mode (double click the control knob if necessary).
2. On your mobile device (phone, tablet, etc.), enable Bluetooth and search for available devices.
3. Select "Jeecoo M20" from the list to connect. A voice prompt will confirm successful pairing.

3. RGB Lighting Control

The speakers feature dynamic RGB lighting. Single click the control knob to change the lighting effect or turn it off completely according to your preference.

Gradient LED Lighting

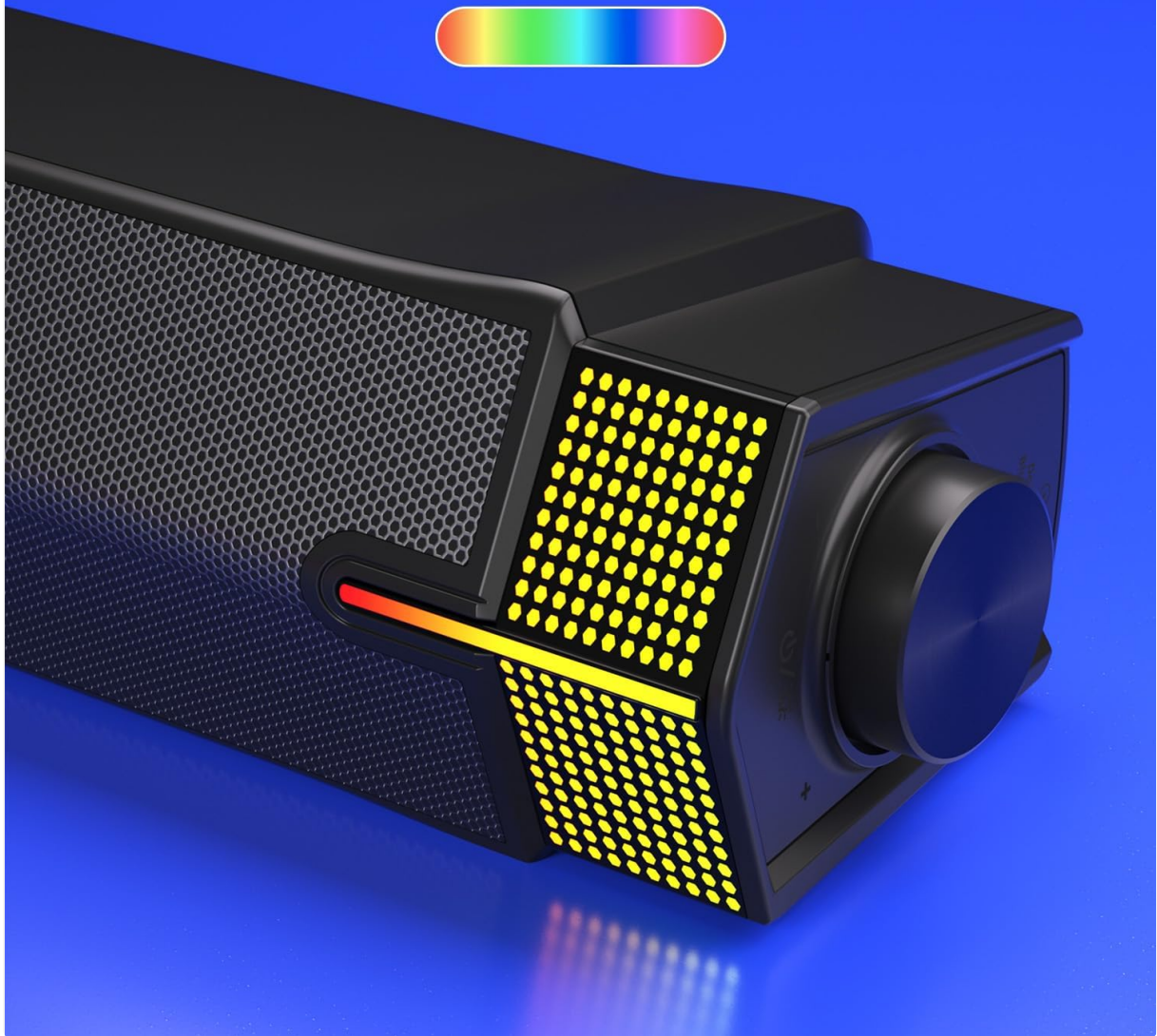


Image: The Jeecoo M20 speakers illuminated with vibrant gradient RGB lighting, showcasing the aesthetic enhancement for your desktop environment.

SPECIFICATIONS

Feature	Detail
Model Name	M20
Brand	Jeecoo
Speaker Type	Soundbar / Stereo Speakers
Connectivity Technology	Bluetooth V5.3, USB Wired
Audio Output Mode	Stereo
Speaker Maximum Output Power	10 Watts (5W*2)
Frequency Response	20000 Hz
Input Voltage	5 Volts
Product Dimensions	1.09"D x 3.07"W x 3.07"H (each speaker unit)
Item Weight	640 Grams (1.41 pounds)
Special Feature	Bluetooth V5.3, Gradient RGB Lighting
Compatible Devices	PC, Laptop, Desktop, Monitor, Smartphones, Tablets, iPad

MAINTENANCE

To ensure the longevity and optimal performance of your Jeecoo M20 speakers, follow these maintenance guidelines:

- **Cleaning:** Use a soft, dry cloth to wipe the speaker surfaces. Avoid using harsh chemicals, solvents, or abrasive cleaners.
- **Storage:** Store the speakers in a cool, dry place away from direct sunlight and extreme temperatures when not in use for extended periods.
- **Handling:** Avoid dropping the speakers or subjecting them to strong impacts.
- **Cable Care:** Do not bend or crimp the USB cable excessively. Ensure it is not tangled or under strain.

TROUBLESHOOTING

If you encounter any issues with your Jeecoo M20 speakers, please refer to the following common solutions:

- **No Sound:**
 - Ensure the speakers are powered on and the volume is turned up.
 - Check if the correct audio mode (Bluetooth or Wired) is selected. Double click the control knob to switch modes.
 - Verify that the USB cable is securely connected to both the speakers and the audio source/power supply.
 - If using a computer, check your system's audio output settings to ensure the speakers are selected as the default device.
- **Bluetooth Connection Issues:**
 - Ensure the speakers are in Bluetooth pairing mode.
 - Disable and re-enable Bluetooth on your device, then try pairing again.
 - Move your device closer to the speakers to ensure it's within the 10-meter Bluetooth range.
 - Disconnect any other Bluetooth devices that might be interfering.
- **RGB Lighting Not Working:**

- Single click the control knob to cycle through lighting modes. The lighting might be turned off.
- Ensure the speakers are receiving power.

If these steps do not resolve the issue, please contact customer support for further assistance.

WARRANTY INFORMATION

The Jeecoo M20 Bluetooth Computer Speakers come with a limited warranty. Please refer to the product packaging or the official Jeecoo website for detailed warranty terms and conditions. Keep your purchase receipt as proof of purchase for any warranty claims.

CUSTOMER SUPPORT

For any questions, technical support, or service inquiries regarding your Jeecoo M20 speakers, please contact our customer support team:

- **Email:** support@jeecoo.com (Example)
- **Website:** Visit the Jeecoo Store on Amazon

Please have your model number (M20) and purchase details ready when contacting support.