

SBS Nubox

SBS NUBOX True Wireless Stereo Earbuds User Manual

Model: Nubox (8018417418549)

1. INTRODUCTION

The SBS NUBOX True Wireless Stereo Earbuds are designed for convenient audio playback and hands-free calling. Featuring True Wireless Stereo technology, these earbuds offer automatic pairing and intuitive touch controls. This manual provides essential information for proper use and maintenance of your device.

2. PACKAGE CONTENTS

- SBS NUBOX True Wireless Stereo Earbuds (Left and Right)
- Charging Case (300 mAh)
- USB-C Charging Cable
- User Manual

3. PRODUCT OVERVIEW

Familiarize yourself with the components of your SBS NUBOX earbuds.



Image 3.1: The SBS NUBOX True Wireless Stereo Earbuds shown with their charging case. The earbuds are depicted outside the open case, highlighting their design and the case's interior.

Semi in-ear design for comfort
and perfect fit



2.5h
OF LISTENING

Image 3.2: A close-up view of the SBS NUBOX earbuds, illustrating their semi in-ear design for comfortable and secure fit. This image emphasizes the ergonomic shape of the earbuds.

Earbud Components:

- **Touch Control Area:** Located on the outer surface of each earbud for managing music, calls, and voice assistant.
- **Microphone:** Integrated for hands-free calling and voice assistant commands.
- **Charging Contacts:** At the base of each earbud for charging within the case.

Charging Case Components:

- **Earbud Slots:** Designated spaces for the left and right earbuds.
- **Charging Port:** USB-C port for charging the case.
- **LED Indicator:** Displays charging status of the case and earbuds.

4. CHARGING

4.1 Charging the Earbuds

To charge the earbuds, place them into their respective slots in the charging case. The earbuds will automatically power off and begin charging. The LED indicator on the case will show the charging status.

Recharge them quickly
and conveniently



1h CHARGE TIME



TWS TECHNOLOGY



TOUCH CONTROLS

Image 4.1: The SBS NUBOX earbuds placed inside their charging case. An indicator light is visible, signifying that the earbuds are charging. This image demonstrates the proper placement for charging.

4.2 Charging the Case

When the charging case battery is low, connect it to a power source using the provided USB-C cable. The LED indicator on the case will illuminate to show that it is charging. Ensure the case is fully charged before extended use.

5. SETUP AND PAIRING

5.1 Automatic Power On/Off

- **Power On:** The earbuds will automatically power on when removed from the charging case.
- **Power Off:** The earbuds will automatically power off when placed back into the charging case.

5.2 Initial Pairing (True Wireless Stereo)

1. Ensure both earbuds are charged.
2. Remove both earbuds from the charging case. They will automatically power on and pair with each other.
3. On your smartphone, tablet, or laptop, enable Bluetooth.
4. Search for available Bluetooth devices and select "NUBOX" from the list.
5. Once connected, a voice prompt will confirm successful pairing.

5.3 Reconnecting

After initial pairing, the earbuds will automatically connect to the last paired device when removed from the charging case, provided Bluetooth is enabled on the device and it is within range (up to 10 meters).

6. OPERATING INSTRUCTIONS

The SBS NUBOX earbuds feature intuitive touch controls for various functions.

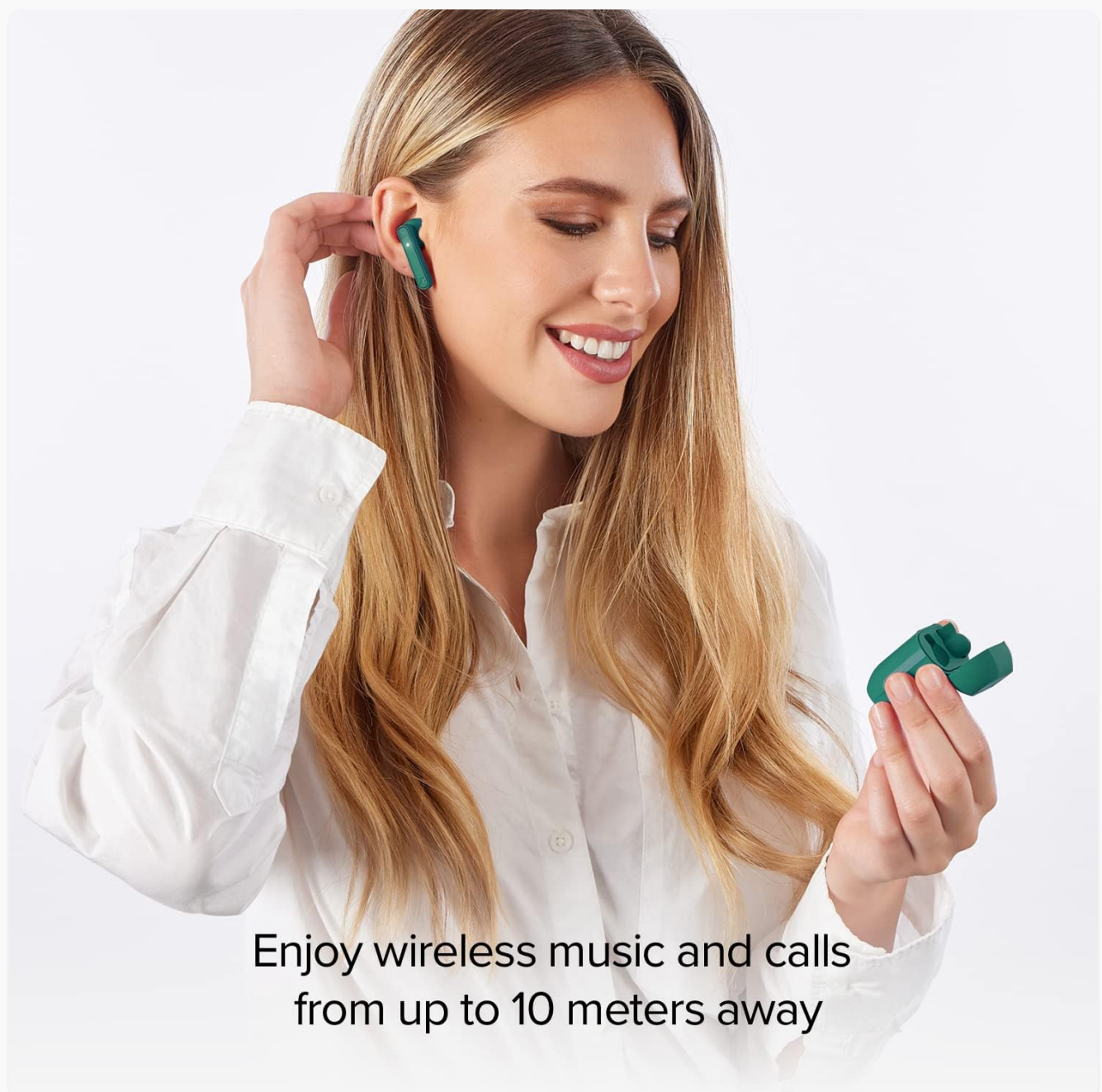


Image 6.1: A woman demonstrating the use of the SBS NUBOX earbuds, placing one into her ear. This image illustrates the practical application and comfortable fit of the earbuds during use.

6.1 Music Playback

- **Play/Pause:** Single tap on either earbud's touch control area.
- **Next Track:** Double tap on the right earbud.
- **Previous Track:** Double tap on the left earbud.

6.2 Call Management

- **Answer/End Call:** Single tap on either earbud's touch control area.
- **Reject Call:** Press and hold either earbud's touch control area for 2 seconds.
- **Redial Last Number:** Triple tap on either earbud's touch control area.

6.3 Voice Assistant Activation

- **Activate Voice Assistant (Siri, Google Assistant, etc.):** Quickly double tap on either earbud's touch control area.

7. MAINTENANCE

- **Cleaning:** Use a soft, dry cloth to clean the earbuds and charging case. Avoid using liquids or abrasive cleaners.
- **Storage:** When not in use, store the earbuds in their charging case to protect them and ensure they remain charged.
- **Battery Care:** To prolong battery life, avoid fully discharging the earbuds and charging case frequently. Charge regularly.

8. TROUBLESHOOTING

Problem	Possible Cause	Solution
Earbuds do not power on.	Low battery.	Place earbuds in the charging case and ensure the case is charged.
Earbuds do not pair with each other.	Interference or pairing error.	Place both earbuds back into the case, then remove them simultaneously to re-initiate True Wireless Stereo pairing.
Earbuds do not connect to device.	Bluetooth off on device, out of range, or not paired.	Ensure Bluetooth is enabled on your device. Check if earbuds are within 10 meters. Re-pair if necessary (see Section 5.2).
No sound from one earbud.	Earbud not paired correctly or low battery.	Ensure both earbuds are charged. Place both earbuds back in the case and remove them to re-establish connection.

9. SPECIFICATIONS

Feature	Detail
Model Name	Nubox

Feature	Detail
Model Number	8018417418549
Connectivity Technology	Wireless (Bluetooth)
Ear Placement	In-Ear
Form Factor	In-Ear
Control Type	Touch Control
Special Features	Integrated Microphone, Voice Assistant Activation
Charging Case Capacity	300 mAh
Battery Composition	Lithium Polymer
Rechargeable Battery	Yes
Material	Plastic
Recommended Use	Music listening and calls
Compatible Devices	Mobile phones, tablets, laptops (e.g., iPhone, Samsung, Xiaomi, Oppo, Huawei, Honor, Motorola, Nokia, iPad, Lenovo, HP, MacBook, iMac)

10. SAFETY INFORMATION







- Do not expose the earbuds or charging case to extreme temperatures, direct sunlight, or moisture.
- Avoid dropping or subjecting the device to strong impacts.
- Do not attempt to disassemble or modify the earbuds or charging case. This may void the warranty and cause damage.
- Keep out of reach of children and pets.
- Dispose of the product responsibly according to local regulations.

11. WARRANTY AND SUPPORT

For warranty information or technical support, please refer to the documentation provided at the time of purchase or contact your retailer. Keep your proof of purchase for warranty claims.



© 2023 SBS. All rights reserved.

 <p>sbs TWS One Color - wireless earphones with True Wireless Stereo Technology</p> <p>Minimal design and touch controls ideal for music and calls. Includes a portable charging case, touch controls, and a 10-meter operating range. Includes technical specifications, key features, and logistics data.</p>	<p>SBS TWS One Color Wireless Earphones with True Wireless Stereo Technology</p> <p>Detailed information on the SBS TWS One Color wireless earphones, featuring True Wireless Stereo technology, touch controls, and a portable charging case. Includes technical specifications, key features, and logistics data.</p>
 <p>sbs TWS earphones with charging case and LCD screen</p> <p>A pair of compact wireless earbuds with a charging case featuring an LCD screen. Enjoy 3 hours of playback, touch controls, and a 10-meter operating range. Includes charging case, USB-A to USB-C cable, and user manual.</p>	<p>SBS TWS Earphones with Charging Case and LCD Screen - Product Overview</p> <p>Discover the SBS TWS Earphones, compact wireless earbuds with a charging case featuring an LCD screen. Enjoy 3 hours of playback, touch controls, and a 10-meter operating range. Includes charging case, USB-A to USB-C cable, and user manual.</p>
 <p>sbs Air Free - TWS wireless earphones with 250 mAh charging case</p> <p>Comfortable and durable. True Wireless Stereo earphones with 250 mAh charging case. Includes technical specifications and package contents.</p>	<p>SBS Air Free TWS Wireless Earphones with 250 mAh Charging Case - Product Overview</p> <p>Detailed overview of the SBS Air Free TWS wireless earphones, featuring True Wireless Stereo technology, a 250 mAh charging case, touch controls, and comfortable design suitable for exercise. Includes technical specifications and package contents.</p>
 <p>sbs TWS earphones with 250 mAh charging case</p> <p>Compact and durable. True Wireless Stereo earphones with 250 mAh charging case. Includes technical specifications and package contents.</p>	<p>SBS Air Kab TWS Earphones with 250 mAh Charging Case - User Guide</p> <p>Detailed information on SBS Air Kab True Wireless Stereo (TWS) earphones, including features, technical specifications, and logistics data. Learn about wireless connectivity, battery life, call handling, and more.</p>
 <p>sbs TWS One Color - wireless earphones with True Wireless Stereo Technology</p> <p>Minimal design and touch controls ideal for music and calls. Includes a portable charging case, touch controls, and a 10-meter operating range. Includes technical specifications, key features, and logistics data.</p>	<p>SBS TWS One Color Wireless Earphones: True Wireless Stereo, Touch Controls, Pink</p> <p>Discover the SBS TWS One Color wireless earphones featuring True Wireless Stereo technology, intuitive touch controls for music and calls, a 10-meter wireless range, and a 3-hour playback time. Includes a 300mAh charging case for up to 4 additional charges. Ideal for everyday use.</p>
 <p>sbs TWS Earbuds Phone Calls & Music</p> <p>Comprehensive user manual for SBS One Color TWS Earbuds, covering charging, pairing, operation, and technical specifications.</p>	<p>SBS One Color TWS Earbuds - User Manual, Specifications, and Controls</p> <p>Comprehensive user manual for SBS One Color TWS Earbuds, covering charging, pairing, operation, and technical specifications.</p>