

Paddie BU0115

Paddie Portable Tattoo Chair / Massage Table Instruction Manual

Model: BU0115

1. INTRODUCTION

This manual provides essential instructions for the safe and effective use of your Paddie Portable Tattoo Chair / Mobile Massage Table, Model BU0115. This versatile unit is designed for professional applications such as massages, tattoos, eyelash extensions, microblading, waxing, and dental treatments. Please read this manual thoroughly before assembly and operation to ensure proper function and longevity of your product.

2. SAFETY INFORMATION

Always read and follow the assembly instructions carefully. Keep sharp objects away from the chair when not in use. Use proper lifting techniques to prevent injury when moving the chair. Do not exceed the weight limit of 150kg (330lbs). Keep the chair away from heat sources to prevent damage to the material.

3. PACKAGE CONTENTS

Verify that all components are present before beginning assembly:

- 1 x Paddie Portable Tattoo Chair
- 1 x Storage Bag
- 1 x Instruction Manual (this document)

4. SETUP INSTRUCTIONS

The Paddie Portable Tattoo Chair requires some assembly upon first use. While designed to be foldable for transport, complete folding and unfolding involves detaching and reattaching support rods. Basic tools (a Philips screwdriver and small wrench) are required for this process.

4.1 Unfolding the Chair

1. Carefully remove the chair from its storage bag.
2. Unfold the main sections of the chair.
3. Locate the support rods for the backrest and footrest. These rods connect the adjustable sections to the main frame.
4. Securely attach the support rods using the provided bolts and nuts. Ensure all connections are tight before use.
5. Attach the detachable headrest and armrests as desired.



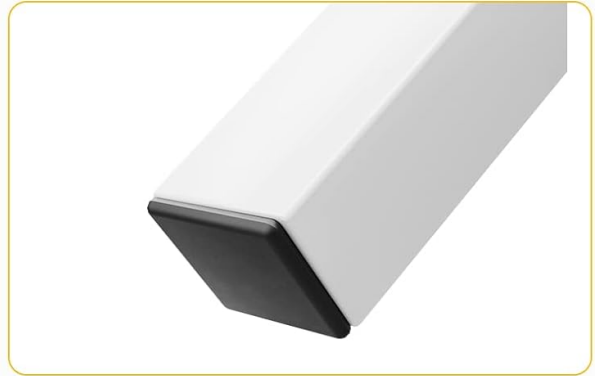
Figure 4.1: Folding and Unfolding Diagram. Reverse these steps for initial setup.

4.2 Detachable Components

The headrest and armrests are designed for easy removal and attachment, allowing for customization based on the specific treatment or client needs.



Detachable Headrest



Anti-Slip Pads

Figure 4.2: Detachable Headrest and Anti-Slip Pads.

5. OPERATING INSTRUCTIONS

The Paddie Portable Tattoo Chair offers adjustable sections to accommodate various client positions.

5.1 Adjusting Backrest and Footrest

The backrest can be adjusted up to an 85-degree angle, and the footrest can be adjusted down to an 85-degree angle. To adjust, loosen the locking mechanism on the support rods, position the section to the desired angle, and then securely tighten the locking mechanism. Ensure the client is safely positioned before making adjustments.

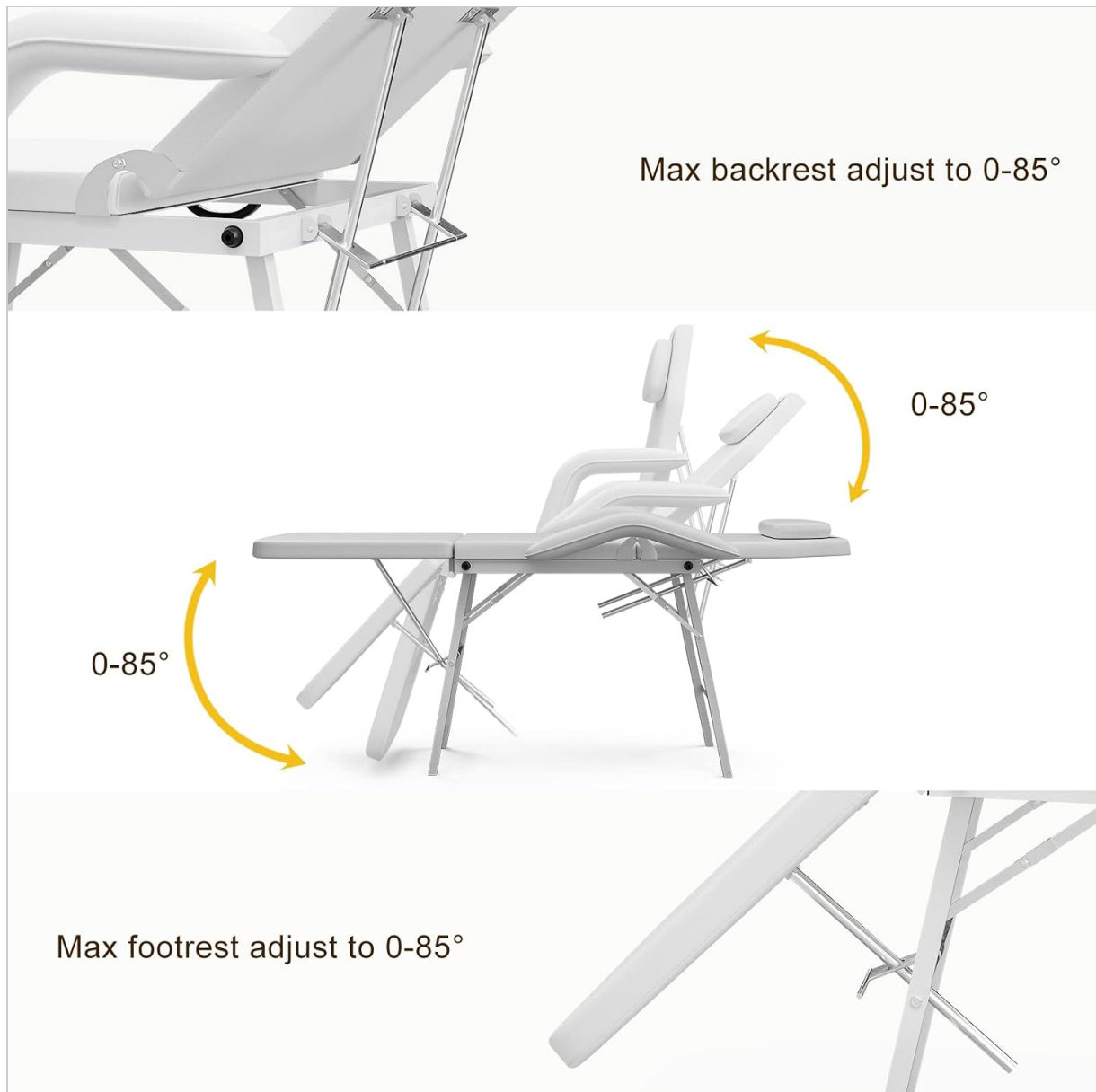


Figure 5.1: Backrest and Footrest Adjustment Range.

6. MAINTENANCE

Proper maintenance ensures the longevity and hygienic condition of your Paddie Portable Tattoo Chair.

6.1 Cleaning

The chair is made with wear-resistant PU leather. To clean, wipe the surface with a dry cloth. For more thorough cleaning, a damp cloth can be used to wipe away dust and dirt. Avoid harsh chemicals or abrasive cleaners that may damage the PU leather.

6.2 Storage

When not in use, the chair can be folded for compact storage. To fold, you must unbolt the support rods for the back and legs. Once folded, place the chair in the provided storage bag to protect it from dust and damage. Store in a dry, cool place.

Foldable Design



Figure 6.1: Folded Chair with Storage Bag.

Suitable for Mobile Professionals



Figure 6.2: Folded Chair in Car Trunk for Transport.

7. TROUBLESHOOTING

This section addresses common concerns and provides solutions.

7.1 Chair is Difficult to Fold/Unfold

The chair's design requires the support rods for the backrest and footrest to be unbolted and removed before folding. This is a necessary step for compact storage. Ensure you have the appropriate tools (small wrench and Philips screwdriver) readily available for this process.

7.2 Chair Feels Heavy for Transport

The chair weighs approximately 59 lbs (27 kg) due to its heavy-duty steel frame, which contributes to its stability and durability. While foldable, its weight means it may require effort to transport. Use proper lifting techniques or assistance when moving the chair.

7.3 No Locking Mechanism When Folded

The chair does not feature an automatic locking mechanism when folded. Exercise caution when handling the folded chair to prevent sections from swinging open. The storage bag helps contain the folded unit.

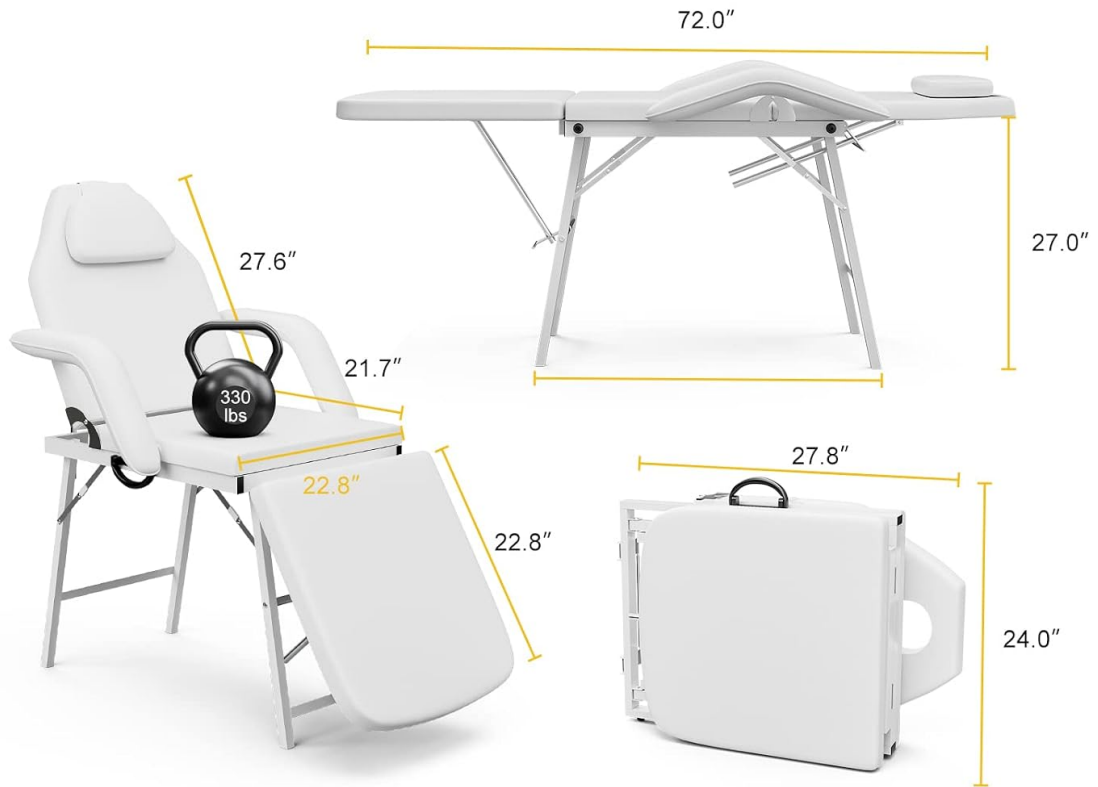
7.4 Chair Height is Too Tall

The chair has a fixed height. If the working height is too high for certain procedures or for the artist, consider using an adjustable-height stool for the practitioner to achieve a comfortable working position.

8. SPECIFICATIONS

Feature	Detail
Model Number	BU0115
Color	White
Material	High-Quality PU Leather, Metal Frame
Unfolded Dimensions (L x W x H)	72.0" x 22.8" x 27.0"
Folded Dimensions (L x W x H)	27.8" x 24.0" x 29.8"
Item Weight	59 lbs (27 kg)
Weight Capacity	Up to 330 lbs (150 kg)
Backrest Adjustment	0-85 degrees
Footrest Adjustment	0-85 degrees
Included Components	Tattoo Chair, Storage Bag, Instruction Manual

Product Dimensions



Material

High-Quality Leather
Metal Leg

Dimensions

Unfold : 72.0"L x 22.8"W x 27.0"H
Fold : 27.8"L x 24.0"W x 29.8"H

Weight

59lbs

Figure 8.1: Product Dimensions and Key Specifications.

9. WARRANTY AND SUPPORT

For warranty information or technical support, please refer to the documentation included with your purchase or contact Paddie customer service directly. Contact details can typically be found on the manufacturer's official website or on your purchase receipt.