

Manuals+

[Q & A](#) | [Deep Search](#) | [Upload](#)

manuals.plus /

> [Voktta](#) /

> [Voktta 100A DC Power Meter User Manual \(6.5-100V, 0-100A\)](#)

Voktta B0B87458J7

Voktta 100A DC Power Meter User Manual

Model: B0B87458J7

1. INTRODUCTION

This manual provides detailed instructions for the installation, operation, and maintenance of your Voktta 100A DC Power Meter. This device is designed to accurately measure DC voltage, current, power, and energy consumption in various applications, including RVs, solar systems, and battery monitoring. Please read this manual thoroughly before use to ensure proper function and safety.

2. SAFETY INFORMATION

- Ensure all power is disconnected before installation or wiring to prevent electric shock.
- This device is intended for DC circuits only. Do not connect to AC power.
- Observe correct polarity (+/-) during wiring to avoid damage to the meter and connected equipment.
- Use appropriate wire gauges (30-12 AWG copper wires recommended) for connections to handle the expected current.
- Do not exceed the maximum voltage (100V DC) or current (100A) ratings.
- Keep the device away from moisture, dust, and extreme temperatures.
- Do not attempt to disassemble or modify the meter. Refer all servicing to qualified personnel.

3. PRODUCT OVERVIEW

3.1 Key Features

- **Wide Measurement Range:** DC voltage 6.5-100V, current 0-100A, power 0-10kW, energy 0-9999kWh.
- **LCD Display:** Simultaneously displays voltage, current, power, and energy.
- **Power-off Data Storage:** All parameters are automatically saved when power is lost.
- **Energy Reset Function:** Accumulated energy data can be manually reset.
- **Over-threshold Alarm:** Backlight and power display flash if active power exceeds a set threshold.
- **Manual Backlight Control:** Backlight can be manually turned on or off.

3.2 Product Dimensions



Figure 1: Voktta 100A DC Power Meter with labeled dimensions (89.6mm x 44.6mm x 24.4mm).

3.3 Display Functions

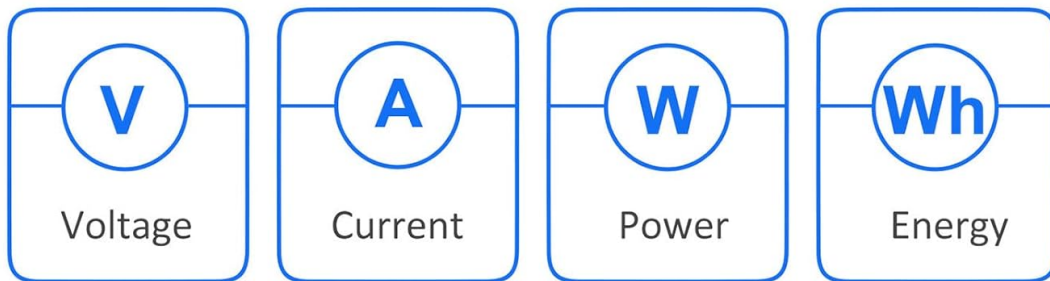
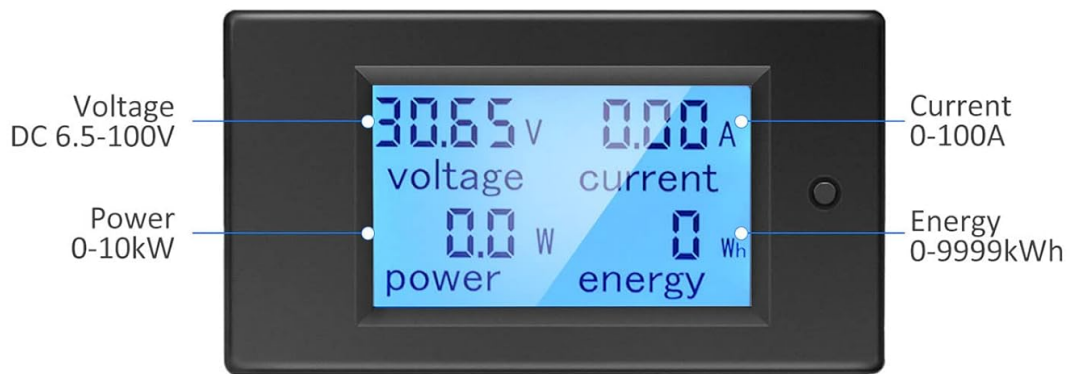


Figure 2: LCD display showing Voltage (V), Current (A), Power (W), and Energy (Wh) measurements.

4. SPECIFICATIONS

Parameter	Value
Model Number	B0B87458J7
Operating Voltage Range	DC 6.5V - 100V
Current Measurement Range	0 - 100A
Power Measurement Range	0 - 10kW
Energy Measurement Range	0 - 9999kWh
Measurement Type	Voltmeter, Ammeter, Wattmeter, Energy Meter
Display Type	LCD with Backlight
Included Components	1*Digital Voltmeter Ammeter DC 100A, 1*100A/75mV Shunt
Compliant Specifications	IEC 61010-1

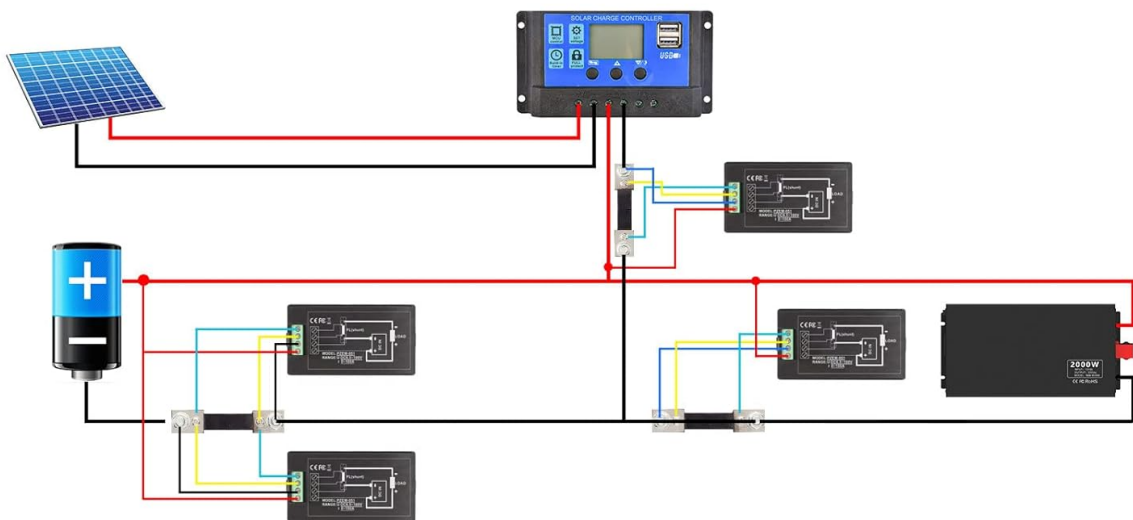
5.2 Solar System Wiring Instruction

This diagram illustrates wiring for a solar system where an inverter connects directly to the battery. The meter's four wires do not carry large current; they are for measurement and power. Any copper wire from 30 AWG to 12 AWG can be used for these connections.

Solar System Wiring Instruction

This diagram is for this circuit with inverter connects battery directly.

The meter doesn't come with any of wires, there is no large current going through the meter. The 4 wires which are connected to the meter can be any copper wire from 30AWG to 12AWG.



You don't need wire both meters, just the voltmeter(s) to monitor what you care for

Figure 4: Solar system wiring diagram with the Voktta DC Power Meter.

You do not need to wire both meters if monitoring a solar system; just connect the voltmeter(s) to monitor the specific parameters you require.

6. OPERATING INSTRUCTIONS

- **Power On:** Once correctly wired, the meter will power on and display real-time voltage, current, power, and accumulated energy.
- **Backlight Control:** The backlight can be manually toggled on or off using the button on the front panel.
- **Over-threshold Indication:** If the active power exceeds a predefined threshold, the backlight and power display will flash to alert the user.
- **Energy Data Reset:** To reset the accumulated energy (kWh) data, press and hold the button on the front panel for approximately 5 seconds until the energy reading resets to zero.
- **Power-off Memory:** The meter automatically saves all settings and accumulated energy data when power is disconnected. This data will be restored upon power-up.

7. MAINTENANCE

- Clean the display and casing with a soft, dry cloth. Do not use abrasive cleaners or solvents.
- Regularly check all wiring connections to ensure they are secure and free from corrosion.
- Ensure the operating environment is within the specified temperature and humidity ranges.

8. TROUBLESHOOTING

- **No Display:**
 - Check if the power supply to the meter is connected correctly and within the 6.5-100V DC range.
 - Verify all wiring connections are secure.
- **Incorrect Readings:**
 - Ensure the shunt is correctly installed in series with the load and its connections are tight.
 - Check for correct polarity of all connections.
 - Verify that the current does not exceed the 100A rating of the shunt and meter.
- **Backlight Flashing:**
 - This indicates that the active power has exceeded the set threshold. This is a normal warning function.
- **Energy Data Not Resetting:**
 - Ensure you are pressing and holding the reset button for at least 5 seconds.

9. SUPPORT

If you encounter any issues or have questions not covered in this manual, please do not hesitate to contact Voktta customer support. We are committed to providing assistance and will do our best to help you resolve any problems.