



Manuals.plus /

› ASHATA /

› ASHATA USB Adapter User Manual

ASHATA B0B82SN4RW

ASHATA USB Adapter User Manual

Model: B0B82SN4RW

INTRODUCTION

This manual provides comprehensive instructions for the ASHATA USB Adapter, a dual-band wireless network adapter designed to provide high-speed internet connectivity for your laptop, PC, or desktop computer. It supports 2.4GHz and 5GHz networks, offering speeds up to 300Mbps on each band, and is compatible with various Windows operating systems.

PRODUCT FEATURES

- **Dual-Band Connectivity:** Supports both 2.4GHz and 5GHz networks for versatile and stable wireless connections.
- **High-Speed Performance:** Achieves speeds up to 300Mbps on both 2.4GHz and 5GHz bands, suitable for streaming, gaming, and large file transfers.
- **Enhanced Coverage:** Antenna design provides ideal performance and coverage penetration.
- **Wide Compatibility:** Compatible with Windows XP, 7, 8, 8.1, 10, and 11 for laptops, PCs, and desktop computers.
- **USB Interface:** Easy plug-and-play connection via USB port.

PACKAGE CONTENTS

Please check the package for the following items:

- ASHATA USB Adapter (1 unit)
- Protective Cap (1 unit)
- (Note: Driver CD/software may not be included; drivers are typically installed automatically or available online.)

SETUP GUIDE

1. **Insert the Adapter:** Carefully insert the ASHATA USB Adapter into an available USB port on your laptop or desktop computer. Ensure it is fully seated.

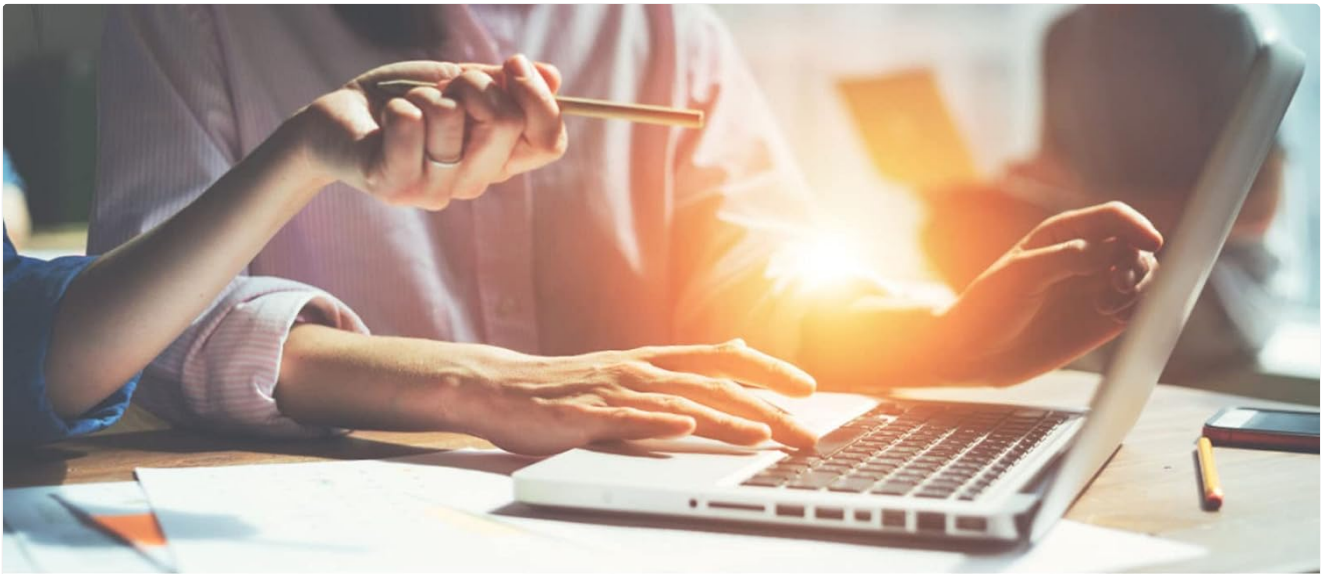


Image: The ASHATA USB Adapter, a black rectangular device with a USB connector, shown with its protective cap removed.

2. **Driver Installation:**

For most modern Windows operating systems (Windows 10/11), the necessary drivers should install automatically upon connecting the device. Wait for a notification indicating that the device is ready for use.

If automatic installation fails or you are using an older OS (Windows XP/7/8/8.1), you may need to manually install drivers. Check the manufacturer's website for the latest drivers. A common issue is that the adapter is not plug-and-play on older systems, requiring a driver download.



Compatible System: for Windows XP 7 8 8.1 10 11
Transmission Rate: 2.4GHz 300Mbps, 5.8GHz 300Mbps



Image: The ASHATA USB Adapter plugged into the side USB port of a silver laptop, with its cap placed next to it.

3. **Verify Installation:** Open Device Manager (search for "Device Manager" in Windows Start menu) and look under "Network adapters" to confirm that the ASHATA USB Adapter is listed and functioning correctly.

OPERATING INSTRUCTIONS

1. **Connect to a Wi-Fi Network:**

Once the adapter is installed, click on the Wi-Fi icon in your system tray (usually in the bottom right corner of your screen). A list of available wireless networks will appear.

2. **Select Your Network:** Choose your desired Wi-Fi network from the list. Networks operating on 5GHz may appear with "5G" or similar in their name, while 2.4GHz networks might not have a specific suffix.



Can provide ideal WiFi performance and coverage on 2.4 and 5GHz networks with better penetration

Image: The ASHATA USB Adapter positioned vertically next to a laptop, with an overlay graphic illustrating its capability to provide ideal WiFi performance and coverage on 2.4GHz and 5GHz networks.

3. **Enter Password:** If prompted, enter the network security key (Wi-Fi password) and click "Connect."
4. **Confirm Connection:** Your computer should now be connected to the internet via the ASHATA USB Adapter. The Wi-Fi icon in the system tray will indicate a successful connection.

MAINTENANCE

- Keep the adapter clean and free from dust. Use a soft, dry cloth for cleaning.
- Avoid exposing the adapter to extreme temperatures or humidity.
- When not in use, store the adapter with its protective cap on to prevent damage to the USB connector.
- Ensure the adapter is not obstructed when in use to maintain optimal signal strength.

TROUBLESHOOTING

Adapter not detected or "Worthless Junk" issue:

If the adapter is not recognized or an error message appears, it often indicates a driver issue, especially on older Windows versions (XP/7/8). The device is not always plug-and-play.

- **Manual Driver Installation:** Visit the ASHATA support website (if available) to download and install the correct drivers for your operating system. You may need to use another internet connection (e.g., wired Ethernet or another device) to download the driver.
- **Try Different USB Port:** Test the adapter in a different USB port on your computer.
- **Restart Computer:** A simple restart can often resolve detection issues.
- **Check Device Manager:** Look for unknown devices or devices with a yellow exclamation mark under "Network adapters" or "Other devices." Right-click and select "Update driver."

Cannot connect to Wi-Fi or "I can't even figure this out" issue:

If the adapter is detected but you cannot connect to a network, consider the following:

- **Correct Password:** Double-check that you are entering the correct Wi-Fi password. Passwords are case-sensitive.
- **Network Range:** Ensure you are within range of your Wi-Fi router. Walls and other obstructions can weaken the signal.
- **Router Reboot:** Try restarting your Wi-Fi router.
- **Driver Update:** Even if detected, outdated or corrupted drivers can cause connectivity issues. Ensure you have the latest drivers installed.
- **Antenna Orientation:** While this model has an internal antenna, ensure the adapter is not physically blocked by other devices or furniture.

Slow Speeds:

- **Interference:** Other electronic devices (microwaves, cordless phones) can cause interference on the 2.4GHz band. Try connecting to a 5GHz network if available.
- **Distance from Router:** The further you are from the router, the weaker the signal and slower the speed.
- **Network Congestion:** Too many devices on the same network can reduce overall speed.
- **Router Settings:** Ensure your router is configured for optimal performance (e.g., WPA2 encryption, appropriate channel selection).

SPECIFICATIONS

Feature	Detail
Brand	ASHATA
Model	USB Network Adapter
Hardware Interface	USB
Data Transfer Rate	600 Megabits Per Second (300Mbps on 2.4GHz, 300Mbps on 5.8GHz)
Compatible Devices	Laptop, Desktop PC
Compatible OS Family	Windows (XP/7/8/8.1/10/11)
Item Weight	18 Grams
Color	General (Black)

WARRANTY AND SUPPORT

For warranty information and technical support, please refer to the product packaging or visit the official ASHATA website. Keep your purchase receipt for warranty claims.

ASHATA aims to provide innovative, good quality products. For further assistance, please contact ASHATA customer service.

About Us

Image: The ASHATA brand logo.

