

[Manuals.plus](#) /

> [WIWU](#) /

> WIWU iPad Pro 11 Inch Keyboard Case User Manual

WIWU 6936686404181

WIWU iPad Pro 11 Inch Keyboard Case User Manual

Model: 6936686404181

1. INTRODUCTION

This manual provides instructions for the WIWU Detachable Wireless Keyboard Case with Trackpad, designed to enhance your iPad experience by transforming it into a versatile workstation. This accessory combines a protective case with a detachable keyboard and a precision trackpad, offering multiple modes for typing, viewing, sketching, and reading.



**THIS IS NOT A LAPTOP
IT'S EVEN MORE**

WIWU Comb0 Keyboard Case for iPad

The WIWU keyboard case offers a laptop-like experience for your iPad.

2. COMPATIBILITY

This keyboard case is compatible with the following Apple iPad models:

- Apple iPad Pro 11-inch (1st generation)
- Apple iPad Pro 11-inch (2nd generation)
- Apple iPad Pro 11-inch (3rd generation)
- Apple iPad Pro 11-inch (4th generation)
- Apple iPad Air (4th generation)
- Apple iPad Air (5th generation)
- Apple iPad (10th generation)

3. PACKAGE CONTENTS

The package includes:

- WIWU iPad Pro 11 Inch Keyboard Case
- USB-C Charging Cable
- User Manual

4. PRODUCT FEATURES

- **Detachable Wireless Keyboard:** Easily attach or detach the keyboard from the case for flexible use.
- **Integrated Trackpad:** Supports multi-touch gestures for precise navigation.
- **7-Color Adjustable Backlight:** Customize your typing experience with various backlight colors and brightness levels.
- **Full Protection Case:** Durable design provides comprehensive protection for your iPad.
- **Built-in Apple Pencil Holder:** Securely store and charge your Apple Pencil.
- **Adjustable Kickstand:** Offers multiple viewing angles (90°-135°) for comfort.
- **Long-lasting Battery:** Up to 150 days standby time and 90 days of typing on a single charge.
- **Magnetic Adsorption:** Strong magnets ensure secure attachment of the iPad and keyboard.
- **Auto-sleep Mode:** Conserves battery life by automatically putting the iPad to sleep when closed.



Magnetic
Adsorption



150 Days
Stand-by



Adjustable
Angle



7-color
Backlit

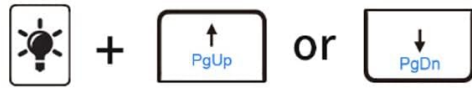


With Touch
Pad



Auto-sleep
mode

Key features of the WIWU keyboard case.



blue



yellow



baby blue



purple



white



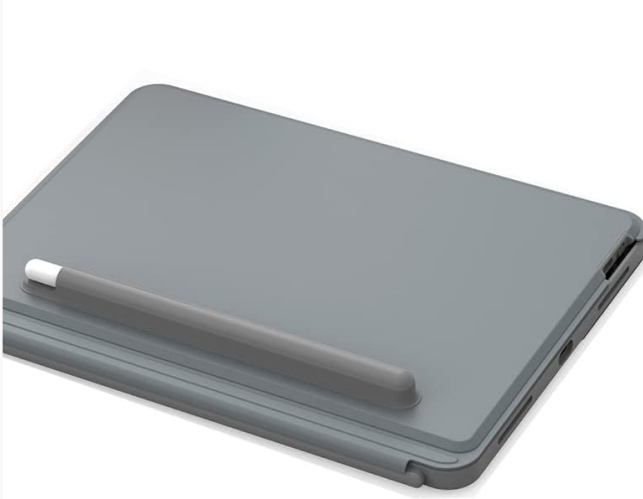
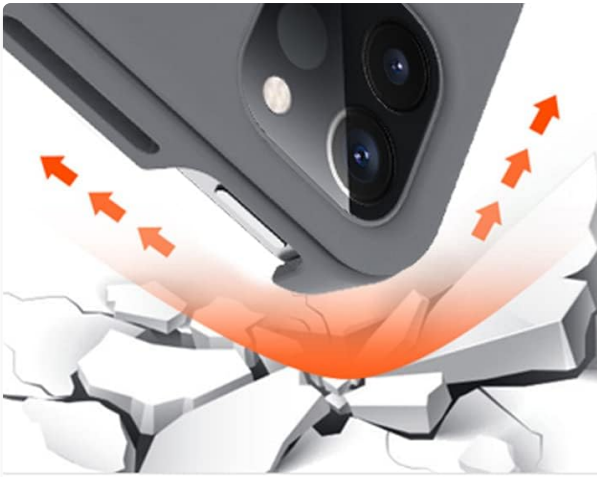
green



red

7-COLOR ADJUSTABLE BACKLIGHT

The keyboard features 7-color adjustable backlighting.



USB-C FULL PROTECTION PEN SLOT

Details on USB-C charging, full protection, and the pen slot.

150 days **500** mAh



LONG-LASTING BATTERY LIFE 90 DAYS TYPING

The keyboard offers extended battery life for prolonged use.

5. SETUP INSTRUCTIONS

5.1 Charging the Keyboard

Before first use, fully charge the keyboard using the provided USB-C cable. Connect the USB-C end to the keyboard's charging port and the other end to a USB power adapter (not included).

5.2 Inserting Your iPad

1. Carefully align your iPad with the protective case.
2. Gently press the iPad into the case, ensuring all edges are securely fitted.
3. Ensure the camera protection cover pieces are correctly placed if applicable for your iPad model.



DETACHABLE KEYBOARD STRONG AND EASY

The keyboard magnetically attaches to the iPad case.

5.3 Bluetooth Pairing

1. Turn on the keyboard using the power switch located on the side.
2. Press the **Fn + Del** keys simultaneously on the keyboard to enter Bluetooth pairing mode. The Bluetooth indicator light will flash.
3. On your iPad, go to **Settings > Bluetooth** and turn Bluetooth on.
4. Select "WIWU Keyboard" (or similar name) from the list of available devices.
5. Once connected, the Bluetooth indicator light on the keyboard will stop flashing.

6. OPERATING INSTRUCTIONS

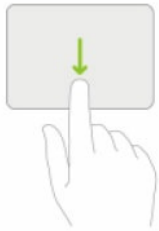
6.1 Keyboard Usage

The keyboard functions like a standard QWERTY keyboard. Use it for typing documents, emails, and navigating your iPad.

6.2 Trackpad Gestures

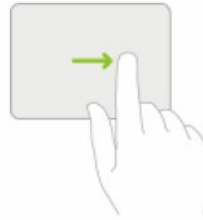
The integrated trackpad supports various multi-touch gestures for efficient navigation:

- **Open Control Center:** Use one finger to move the pointer to select the status icons at the top right, then click. Alternatively, swipe up with one finger from the bottom right corner.
- **View Slide Over:** Use one finger to swipe the pointer past the right edge of the screen. To hide Slide Over, swipe right again.
- **Scroll Left or Right:** Swipe two fingers left or right.



Open Control Center

Use one finger to move the pointer to select the status icons at the top right, then click
Or select the status icons at the top right, then swipe up with one finger



View Slide Over

Use one finger to swipe the pointer past the right edge of the screen. To hide Slide Over, swipe right again



Open Control Center

Use one finger to move the pointer to select the status icons at the top right, then click.



Scroll left or right

Swipe two fingers left or right

Common trackpad gestures for iPad navigation.

6.3 Adjusting Backlight

To adjust the keyboard backlight color and brightness:

- Press the **light bulb icon key** to cycle through brightness levels.
- Press **Fn + PgUp** or **Fn + PgDn** to change backlight colors.

6.4 Adjusting Viewing Angles

The case features an adjustable kickstand that allows you to set your iPad at various angles between 90° and 135° for optimal viewing and typing comfort.



The kickstand provides flexible viewing angles.

6.5 Multiple Usage Modes

The detachable design and adjustable kickstand allow for various modes:

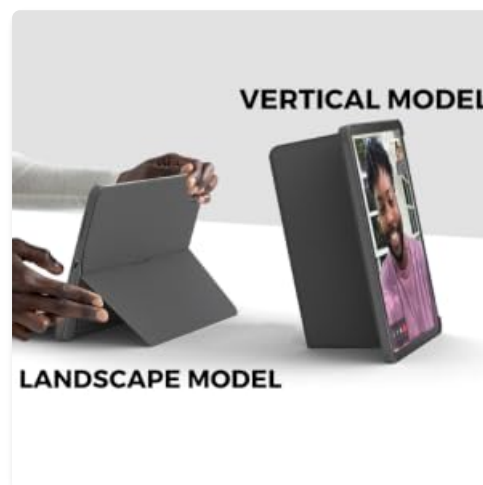
- **Typing Mode:** iPad attached to the keyboard, propped up for typing.
- **Viewing Mode:** Keyboard detached, iPad propped up for watching videos or video calls.
- **Sketching/Reading Mode:** Keyboard detached, iPad laid flat or held for drawing or reading.

piece design for
different mode



DO IT WITH iPad TYPE, VIEW, SKETCH, READ

The case supports multiple modes for different activities.



The case allows for both vertical and landscape orientations.

Your browser does not support the video tag.

Official video demonstrating the WIWU Detachable Wireless Keyboard Case features and usage.

7. MAINTENANCE

- **Cleaning:** Use a soft, damp cloth to clean the case and keyboard. Avoid harsh chemicals.
- **Battery Care:** To prolong battery life, avoid fully discharging the keyboard frequently. Charge it regularly.
- **Storage:** When not in use for extended periods, store the keyboard case in a cool, dry place.

8. TROUBLESHOOTING

- **Keyboard not connecting via Bluetooth:**
 - Ensure the keyboard is charged and powered on.
 - Verify Bluetooth is enabled on your iPad.
 - Try re-pairing the keyboard by pressing **Fn + Del**.
 - Restart both your iPad and the keyboard.
- **Trackpad not responding or erratic cursor:**
 - Ensure the keyboard is fully charged. Low battery can affect trackpad performance.
 - Disconnect and reconnect the Bluetooth connection.
 - Clean the trackpad surface to remove any debris.
 - Check iPad settings for trackpad sensitivity.
- **Keys not responding:**
 - Ensure the keyboard is connected and charged.
 - Test individual keys. If only some keys are affected, contact support.

9. SPECIFICATIONS

Feature	Detail
Brand	WIWU
Model Number	6936686404181
Connectivity Technology	Bluetooth, USB (for charging)
Keyboard Description	Ergonomic
Power Source	Battery Powered
Switch Type	Scissor-Switch
Keyboard Layout	QWERTY
Number of Keys	78
Item Weight	400 Grams

10. WARRANTY AND SUPPORT

For any product inquiries, technical assistance, or warranty information, please contact WIWU customer

support. WIWU offers 7x24-hour online support to assist you with any issues or questions you may have regarding your keyboard case.

Please refer to your purchase documentation or the official WIWU website for specific warranty terms and contact details.

© 2023 WIWU. All rights reserved.