

Manuals+

[Q & A](#) | [Deep Search](#) | [Upload](#)

manuals.plus /

- › [AquaMiracle](#) /
- › [AquaMiracle Automatic Fish Feeder \(Model AF01\) Instruction Manual](#)

AquaMiracle AF01

AquaMiracle Automatic Fish Feeder (Model AF01) Instruction Manual

INTRODUCTION

This manual provides detailed instructions for the AquaMiracle Automatic Fish Feeder, Model AF01. This device is designed to automatically dispense food for your aquatic pets, offering convenience and ensuring consistent feeding schedules. It features adjustable feeding times, variable food volume control, and a moisture-proof design to keep food dry. Please read this manual thoroughly before use to ensure proper setup and operation.



Image: The AquaMiracle Automatic Fish Feeder, showing its main components and a 360-degree rotation feature.

SETUP

1. Unpacking and Components

Carefully remove all components from the packaging. Ensure you have the following:

- AquaMiracle Automatic Fish Feeder unit
- Mounting bracket
- Double-sided sticker

2. Battery Installation

1. Locate the battery compartment on the underside of the feeder unit.
2. Open the battery compartment cover.
3. Insert two (2) AA batteries (not included), ensuring correct polarity (+/-).
4. Close the battery compartment cover securely.



Image: The feeder's battery compartment, requiring two AA batteries, and an illustration of its 360-degree rotatable base.

3. Mounting the Feeder

The feeder offers two mounting options to suit various aquarium types:

Mode 1: Bracket Installation (for rimless or framed aquariums)

1. Attach the mounting bracket to the feeder unit.
2. Secure the bracket to the edge of your aquarium using the adjustable screw. Ensure it is firmly attached.

3. The feeder can be rotated 360 degrees on the bracket to position the food outlet correctly over the water surface.

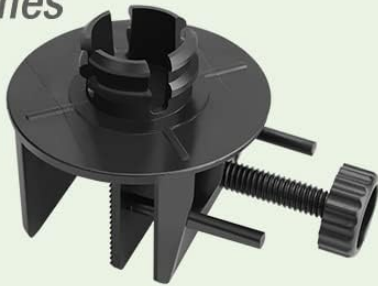
Mode 2: Double-Sided Sticker Installation (for aquariums with hoods/lids)

1. Clean and dry the desired mounting surface on your aquarium lid.
2. Peel off one side of the protective film from the double-sided sticker and attach it to the bottom of the feeder unit.
3. Peel off the other side of the protective film and firmly press the feeder onto the cleaned surface of your aquarium lid.

Fits Any Aquarium!

Mode 1

Use the base for rimless tanks or tanks with frames



Mode 2

Use the double-sided sticker for tanks with lids



Image: Two mounting methods for the feeder: using a bracket for rimless tanks and a double-sided sticker for tanks with lids.

4. Filling the Food Drum

1. Slide the lid on the food drum to open the filling port.
2. Fill the drum with your desired fish food. The drum has a capacity of 200ml (6.8 oz).
3. Slide the lid back to close the filling port.

5. Adjusting Food Volume

The feeder allows you to adjust the amount of food dispensed per feeding. A sliding mechanism on the food drum controls the size of the opening.

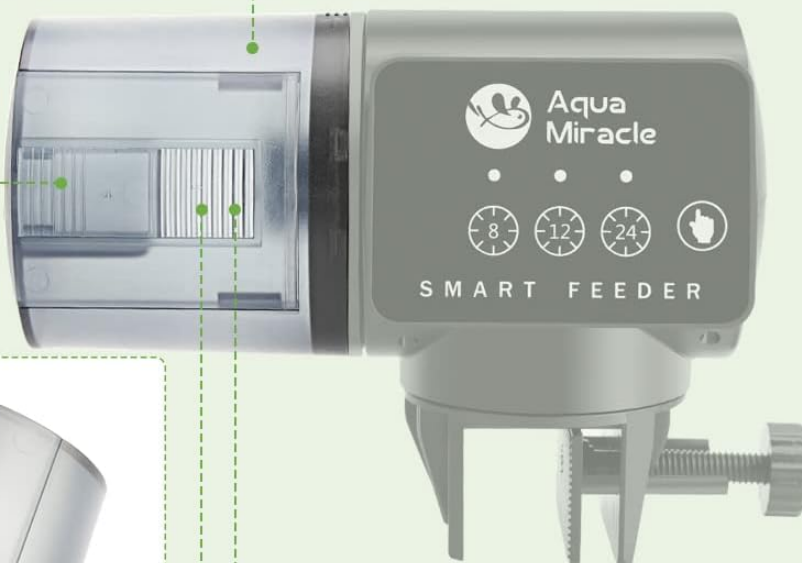
- Slide the adjustment lever to increase or decrease the opening size.
- **Important:** Before setting a feeding schedule, use the manual feeding button (see Operating Instructions) to test the dispensed volume. Adjust the slider until the ideal amount of food is released for your fish.

Easy Refilling

Slide to open the food drum lid for refilling



**Large Capacity of 200ml
(6.8 oz)**



Food Volume Adjustable

Slide to control the food volume

KIND REMINDER - Test with the "Manual" button to find the ideal feeding volume before using the feeder

Moisture-proof Design

The opening always stays upward after feeding to prevent moisture entry

Image: Illustrations showing how to slide the lid for refilling the 200ml food drum and how to adjust the food volume using a slider.

1. Setting Feeding Times

The AquaMiracle Automatic Fish Feeder offers three preset feeding intervals. To select a feeding schedule, simply press the corresponding button:

- **8 Hours:** Press the '8' button for one feeding every 8 hours.
- **12 Hours:** Press the '12' button for one feeding every 12 hours.
- **24 Hours:** Press the '24' button for one feeding every 24 hours.

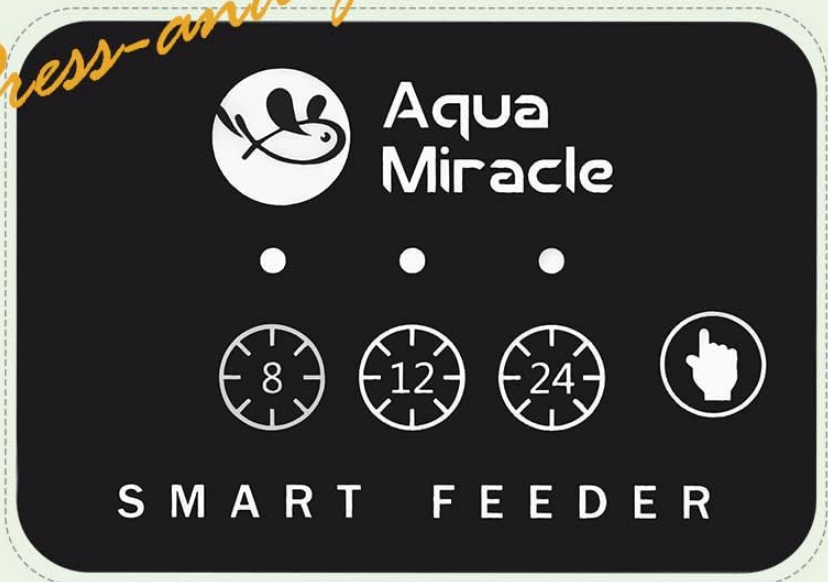
The feeder will begin its cycle from the moment the button is pressed.

Setting Timing is Soo... Easy!

Super easy setting

- *Feed every 8 hrs*
- *Feed every 12 hrs*
- *Feed every 24 hrs*
- *Manual feeding*

Press-and-go!



Travelling



Business Trip



Gathering



Work Overtime

Image: The control panel of the feeder, highlighting the 8-hour, 12-hour, 24-hour, and manual feeding buttons.

2. Manual Feeding

To dispense food immediately, press the 'Manual' button (represented by a hand icon). This will perform a single feeding cycle without affecting your programmed schedule.

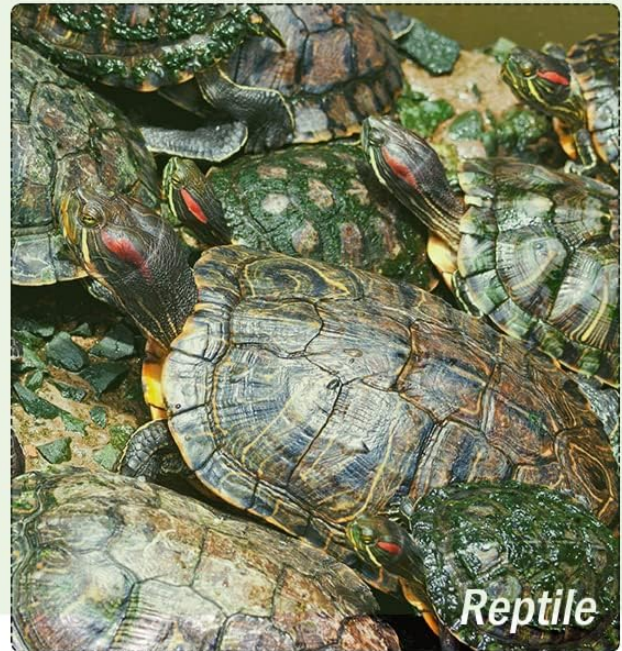
3. Food Compatibility

This feeder is suitable for various types of dry fish food, including:

- Granules
- Pellets
- Strips
- Flakes

Note for Flakes: For optimal and consistent dispensing, it is recommended to break flake food into smaller pieces before filling the drum. This feeder is also suitable for feeding turtles.

Designed to feed fish and reptiles



Ideal for multiple kinds of food

For FLAKES please break it into small pieces before filling into the drum to get best and consistent volume control.



Flakes



Granules



Pallets



Strips

Image: Examples of fish and reptiles that can be fed, along with various food types like flakes, granules, pellets, and strips.

MAINTENANCE

1. Cleaning

To ensure hygiene and proper function, clean the feeder regularly.

- Remove the feeder from the aquarium.
- Empty any remaining food from the drum.

- The food drum and dispensing mechanism can be hand washed with mild soap and water.
- Ensure all parts are completely dry before reassembling and refilling with food.
- Do not immerse the main electronic unit in water.

2. Battery Replacement

Replace the AA batteries when the feeder's operation becomes inconsistent or stops. It is recommended to replace both batteries simultaneously to ensure optimal performance.

3. Moisture Prevention

The feeder is designed with a moisture-proof mechanism where the food dispensing opening always faces upward after rotation, preventing moisture from entering the food drum. Ensure the feeder is positioned correctly to utilize this feature effectively.

TROUBLESHOOTING

Problem	Possible Cause	Solution
Feeder does not dispense food.	Low or dead batteries. Food drum is empty. Food outlet is clogged. Incorrect food type/size.	Replace batteries. Refill food drum. Clear any obstructions from the food outlet. Ensure food is suitable for the feeder (break flakes into smaller pieces).
Dispensing too much or too little food.	Food volume adjustment is incorrect.	Adjust the sliding lever on the food drum to control the opening size. Test with the manual feed button until desired volume is achieved.
Food inside the drum is damp or moldy.	High humidity near the feeder. Improper positioning allowing moisture entry.	Ensure the feeder is placed in a location with adequate ventilation. Verify the feeder is mounted correctly so the food opening faces upward after dispensing.
Feeder makes unusual noises.	Mechanical obstruction. Low batteries.	Check for any foreign objects or food particles obstructing the motor or drum rotation. Clean if necessary. Replace batteries.

SPECIFICATIONS

Feature	Detail
Model Number	AF01
Brand	AquaMiracle
Dimensions (LxWxH)	5.75 x 2.7 x 4.1 inches (14.6 x 6.8 x 10.4 cm)
Item Weight	8.8 ounces (0.25 Kilograms)

Feature	Detail
Food Drum Capacity	200ml (6.8 oz)
Power Source	2 x AA Batteries (not included)
Material	Plastic
Color	Black
Feeding Intervals	8 hours, 12 hours, 24 hours, Manual
Mounting Options	Bracket (360° rotatable), Double-sided sticker



Image: Detailed dimensions of the AquaMiracle Automatic Fish Feeder unit and its mounting base.

WARRANTY INFORMATION

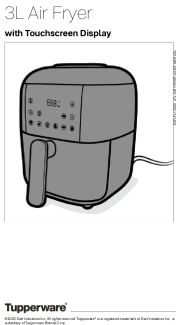
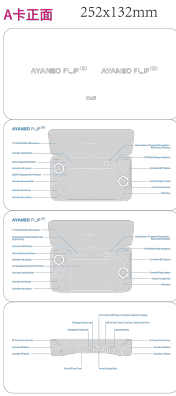
The AquaMiracle Automatic Fish Feeder (Model AF01) comes with a **1 Year Warranty** from the date of purchase. This warranty covers manufacturing defects and malfunctions under normal use. Please retain your proof of purchase for warranty claims. For specific terms and conditions, refer to the warranty documentation included with your product or contact customer support.

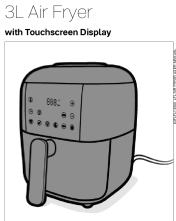


CUSTOMER SUPPORT

If you have any questions, require assistance with setup, or encounter issues not covered in this manual, please contact AquaMiracle customer support. Refer to the product packaging or the official AquaMiracle website for contact details.

© 2023 AquaMiracle. All rights reserved.

Related Documents - AF01

	<p>FUKUMARU Automatic Pet Feeder: Product Information and Instructions</p> <p>Comprehensive guide to the FUKUMARU Automatic Pet Feeder, covering package contents, product specifications, status indicators, precautions, setup instructions, remote control via the Smartlife app, cleaning and maintenance, troubleshooting, FAQs, and warranty information.</p>
	<p>Tupperware 3L Air Fryer with Touchscreen Display User Manual</p> <p>Comprehensive user manual for the Tupperware 3L Air Fryer with touchscreen display, detailing operation, safety guidelines, technical specifications, and warranty information.</p>
	<p>AYANEO FLIP (AF01) User Manual and Product Overview</p> <p>Comprehensive guide to the AYANEO FLIP (AF01) portable gaming computer, detailing its features, usage, controls, connectivity, and regulatory information. Includes instructions for both KB and DS models.</p>

 <p>3L Air Fryer with Touchscreen Display</p> <p>Tupperware</p>	<p>Tupperware 3L Air Fryer with Touchscreen Display User Manual</p> <p>User manual for the Tupperware 3L Air Fryer with Touchscreen Display, covering intended use, safety instructions, operating instructions, technical specifications, and sustainability.</p>
 <p>COSA</p> <p>Instruction Manual</p> <p>Model: FE-AF01/C FE-AF03/C FE-AF05/C</p>	<p>COSA Ceiling Fan Instruction Manual: FE-AF01/C, FE-AF03/C, FE-AF05/C Installation & Operation</p> <p>Comprehensive instruction manual for COSA ceiling fans, models FE-AF01/C, FE-AF03/C, FE-AF05/C. Includes safety, installation, operation, maintenance, and technical specifications.</p>
 <p>Gtech</p> <p>AirFOX Platinum Model: AF01</p> <p>OPERATING MANUAL</p>	<p>Gtech AirFOX Platinum Cordless Vacuum Cleaner AF01 Operating Manual</p> <p>Operating manual for the Gtech AirFOX Platinum Cordless Vacuum Cleaner, Model AF01. Includes important safety information, assembly, operation, maintenance, troubleshooting, and technical specifications.</p>