



Manuals.plus /

› C&AHOME /

› C&AHOME 16-Cube Modular Storage Organizer (Model UPCS16L) Instruction Manual

C&AHOME UPCS16L

C&AHOME 16-Cube Modular Storage Organizer

MODEL: UPCS16L INSTRUCTION MANUAL

Introduction

Thank you for choosing the C&AHOME 16-Cube Modular Storage Organizer. This product is designed to provide versatile and customizable storage solutions for your home, bedroom, or office. Its modular design allows for various configurations to suit your specific needs. Please read this manual carefully before assembly and use to ensure proper installation and safe operation.



Image: The C&AHOME 16-Cube Modular Storage Organizer, showcasing its 16 individual blue cubes and a small wooden mallet.

Safety Information

- **Weight Limit:** Do not exceed the maximum weight limit of **11 pounds (5 kg) per cube** to prevent damage or injury.
- **Assembly:** Keep small parts away from children during assembly. Ensure all connections are secure before placing items in the organizer.
- **Stability:** For optimal stability, especially with taller configurations, consider placing heavier items in lower cubes.
- **Placement:** Place the organizer on a flat, stable surface. Avoid placing it in areas with high humidity or direct sunlight for extended periods.
- **Disassembly:** When disassembling, exercise caution to avoid pinching fingers.

Package Contents

Before beginning assembly, please verify that all components listed below are present and undamaged.



Elegant Display Shelf

Displaying multiple items. Well-organized home makes you being at home more enjoyable

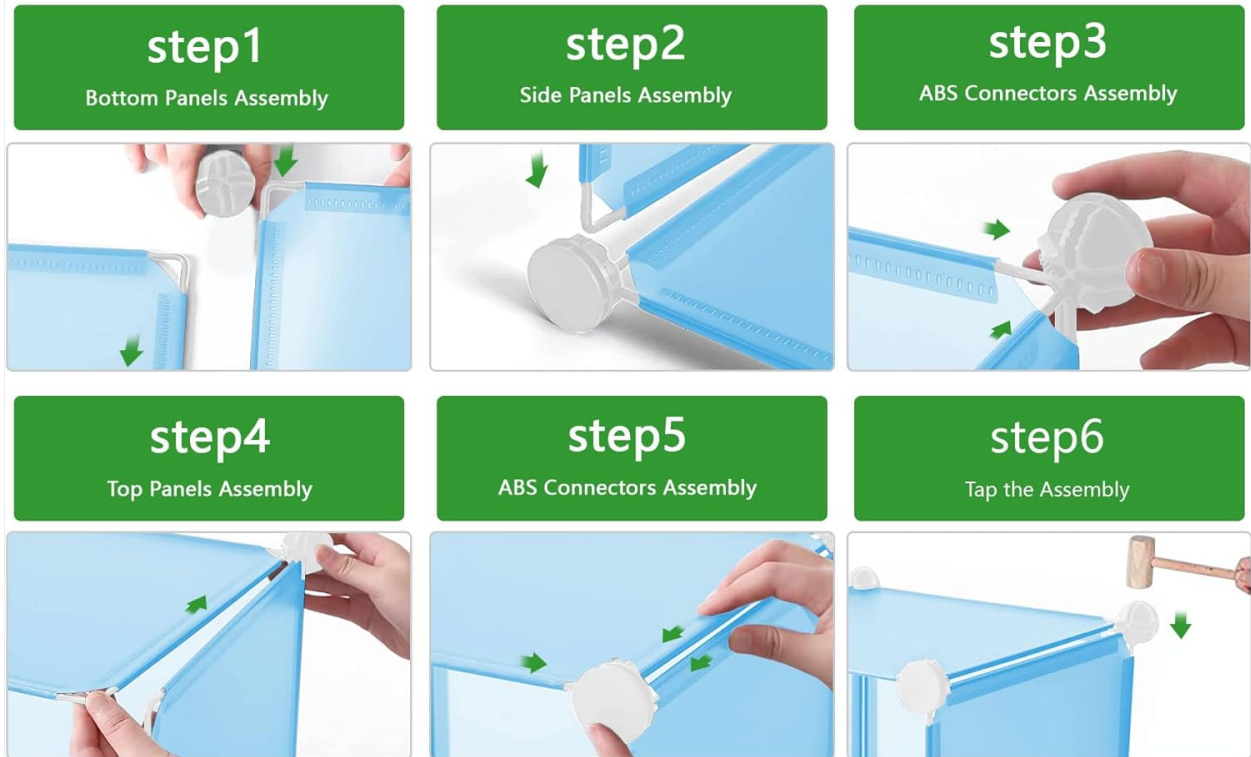
Image: Visual representation of all items included in the package, detailing quantities for each component.

Component	Quantity
30x30cm Panel	56 PCS
Plastic Connector	50 PCS
Wooden Hammer	1 PC
Row Hook	1 PC

Assembly Instructions

Follow these steps to assemble your C&AHOME 16-Cube Modular Storage Organizer. A wooden mallet is included to assist with securing connections.

Easy to Assemble



- Make sure that the corners of panels are inserted into the bottom of connectors entirely
- Hit the ABS connectors with the mallet to make sure the panels are installed tightly

Image: Detailed visual instructions for each assembly step, from connecting bottom panels to tapping connectors.

1. **Step 1: Bottom Panels Assembly** - Begin by connecting the bottom panels using the plastic connectors. Ensure the corners of the panels are fully inserted into the bottom of the connectors.
2. **Step 2: Side Panels Assembly** - Attach the side panels to the connectors, forming the vertical structure of the cubes.
3. **Step 3: ABS Connectors Assembly** - Continue adding connectors to the top edges of the side panels, preparing for the next layer.
4. **Step 4: Top Panels Assembly** - Place the top panels onto the newly installed connectors, completing the first layer of cubes.
5. **Step 5: ABS Connectors Assembly (Repeat)** - Repeat steps 2-4 for subsequent layers, building the organizer to your desired height and configuration.
6. **Step 6: Tap the Assembly** - Use the provided wooden mallet to gently tap all ABS connectors. This ensures that the panels are installed tightly and the structure is stable.

Important: Make sure that the corners of panels are inserted into the bottom of connectors entirely. Hit the ABS connectors with the mallet to make sure the panels are installed tightly.

Usage and Configuration

The C&AHOME 16-Cube Modular Storage Organizer offers flexible storage and display options for various

items.

Perfect Cube Organizer that Everyone Uses.

A Good Helper for Household Storage!

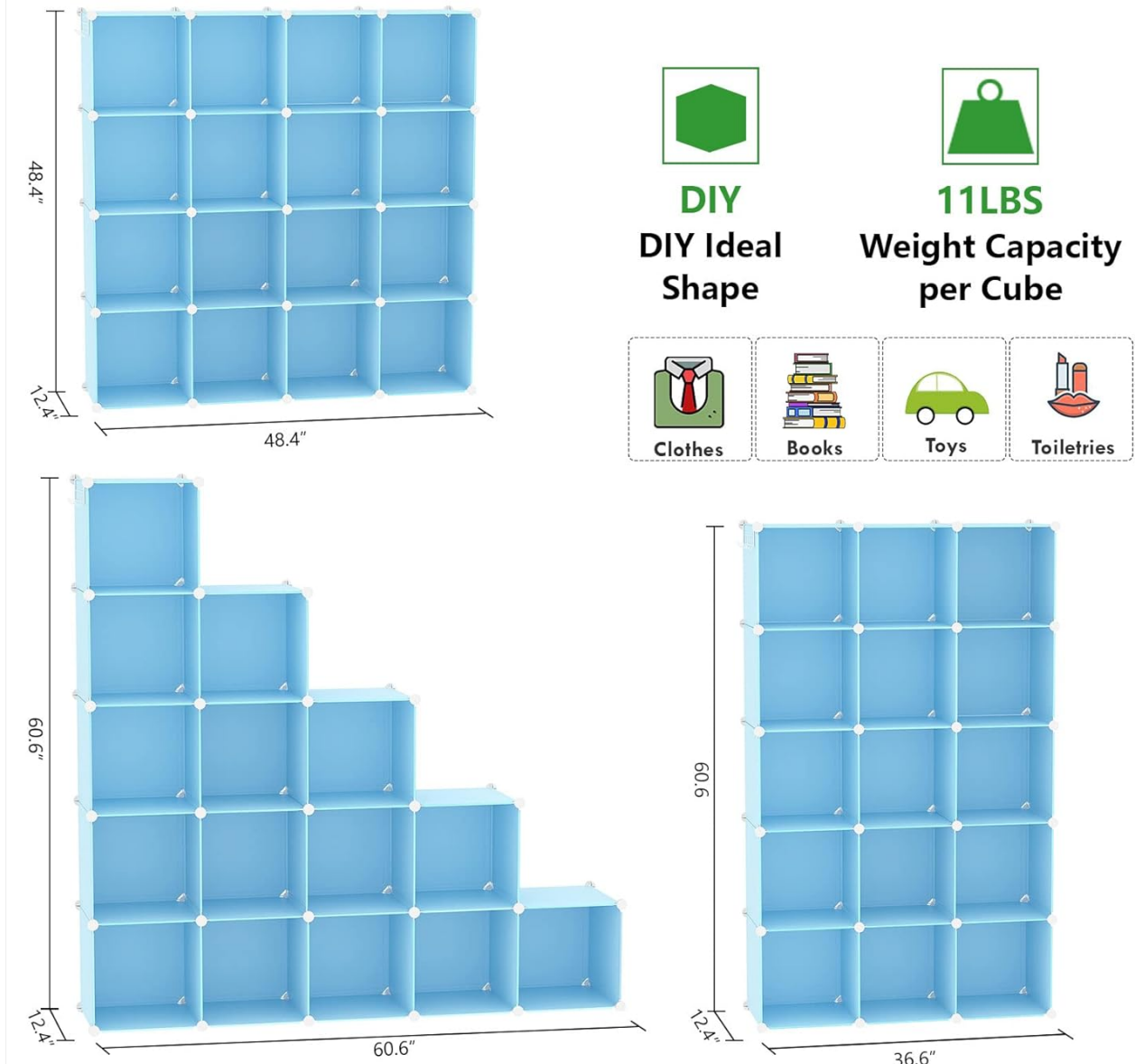


Image: Illustrates different possible shapes and sizes for the modular organizer, along with key dimensions and the 11 lbs weight capacity per cube.

- **Versatile Storage:** Each cube measures approximately 11.8"L x 11.8"W x 11.8"H, suitable for storing books, toys, clothes, bags, potted plants, and other household items.
- **Customizable Design:** The modular nature allows you to create various shapes and sizes to fit different spaces or meet specific storage needs. You can assemble it as a single large unit, multiple smaller units, or unique configurations like a stepped shelf.
- **Gift Hook:** Utilize the included row hook to hang keys, ties, hats, or umbrellas on the side of the organizer for convenient access.
- **Recommended Locations:** Ideal for use in bedrooms, living rooms, and offices to enhance organization and display.

Customized Ideal Shap

Create the storage organizer in varieties of shapes to meet your diverse needs



Image: A customized stepped configuration of the blue cube organizer, showcasing its adaptability for displaying items.

Care and Maintenance

Proper care will ensure the longevity and appearance of your storage organizer.

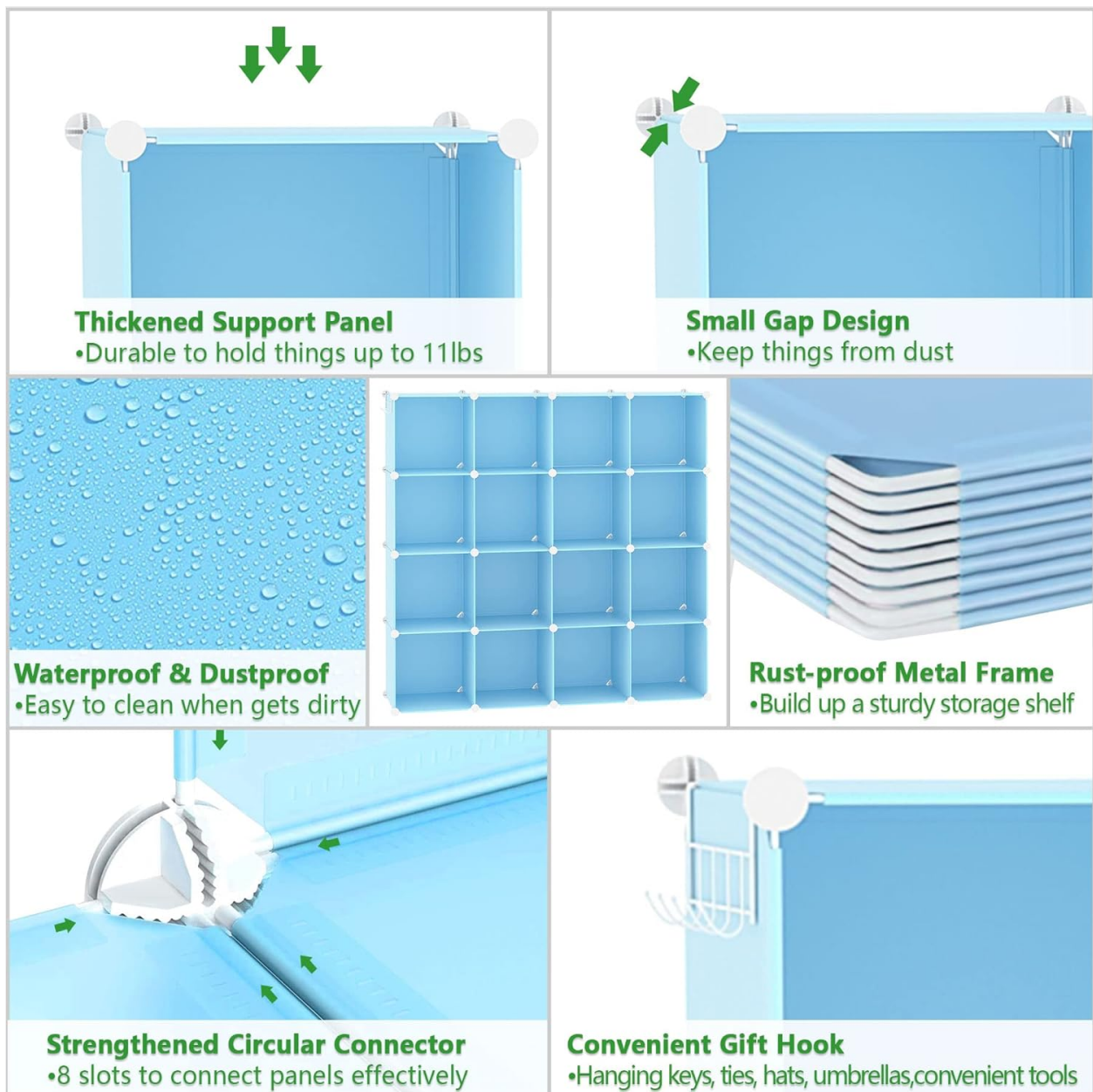


Image: Features of the organizer, including its waterproof and dustproof panels, which facilitate easy cleaning.

- **Cleaning:** Wipe the panels with a dry cloth to remove dust and dirt. For more stubborn marks, a damp cloth with mild soap can be used, followed by drying thoroughly.
- **Avoid Harsh Chemicals:** Do not use abrasive cleaners or harsh chemicals, as these may damage the plastic panels.
- **Dust Protection:** The small gap design helps to keep dust out, maintaining the cleanliness of your stored items.
- **Rust Prevention:** The internal metal frame is designed to be rust-proof, but avoid prolonged exposure to excessive moisture.

Troubleshooting

If you encounter any issues during or after assembly, refer to the following common solutions.

- **Organizer is Unstable:**
 - Ensure all panel corners are fully inserted into the plastic connectors. Use the wooden mallet to tap each connector firmly until it snaps into place.
 - Verify that the organizer is placed on a level surface.

- **Panels Do Not Fit:**

- Check that you are using the correct panels and connectors for the intended cube size.
- Apply firm, even pressure when inserting panels into connectors. The mallet can assist in seating them properly.

- **Items Cause Sagging/Collapse:**

- Review the weight limit. Each cube can hold a maximum of 11 pounds (5 kg). Redistribute heavier items or reduce the load.
- Ensure the structure is fully assembled and all connections are tight.

Specifications

Feature	Detail
Model Name	UPCS16L
Overall Product Dimensions	48.4" L x 12.4" W x 48.4" H
Individual Cube Dimensions	11.8" L x 11.8" W x 11.8" H (approximate)
Number of Cubes	16
Weight Limit per Cube	11 Pounds (5 kg)
Materials	PP Panels, Metal Frame, ABS Plastic Connectors
Assembly Required	Yes
Product Care Instructions	Wipe with Dry Cloth
Color	Blue

Warranty and Support

For warranty information, replacement parts, or any further assistance, please contact C&AHOME customer support. Refer to your purchase documentation for specific contact details or visit the official C&AHOME website.

We are committed to providing quality products and support to ensure your satisfaction.