

GuliKit SD01

GuliKit Electromagnetic Joystick Module (Type A) for Steam Deck - Instruction Manual

Model: SD01 | Brand: GuliKit

1. INTRODUCTION

This manual provides detailed instructions for the installation, calibration, and maintenance of your GuliKit Electromagnetic Joystick Module (Type A) for Steam Deck. This module is engineered with Hall Effect sensors to provide a drift-free and highly precise gaming experience, replacing original joysticks that may suffer from common issues like creeping, stuttering, blind spots, or dead zones.

2. COMPATIBILITY CHECK

This GuliKit joystick module is specifically designed for Steam Deck units equipped with a **Type A Stick**. It is crucial to verify your Steam Deck's controller ID before proceeding with installation.

1. Navigate to: **Settings** → **System** → **Steam Deck Controller ID**.
2. If your Controller ID begins with "MEDA", this joystick module is compatible with your device.

A new version for Type B sticks will be available separately.



Image: Steam Deck settings screen indicating how to check for "MEDA" Controller ID for Type A stick compatibility.

3. PACKAGE CONTENTS

The GuliKit Electromagnetic Joystick Module package includes the following items:

- 2 x GuliKit Electromagnetic Joystick Modules
- 2 x Steel Screwdriver Bits
- 1 x Multi-bit Screwdriver
- 1 x ESD Tweezer
- 1 x Crowbar

Note: Soldering tools are not included and must be acquired separately if needed for capacitive touch functionality.

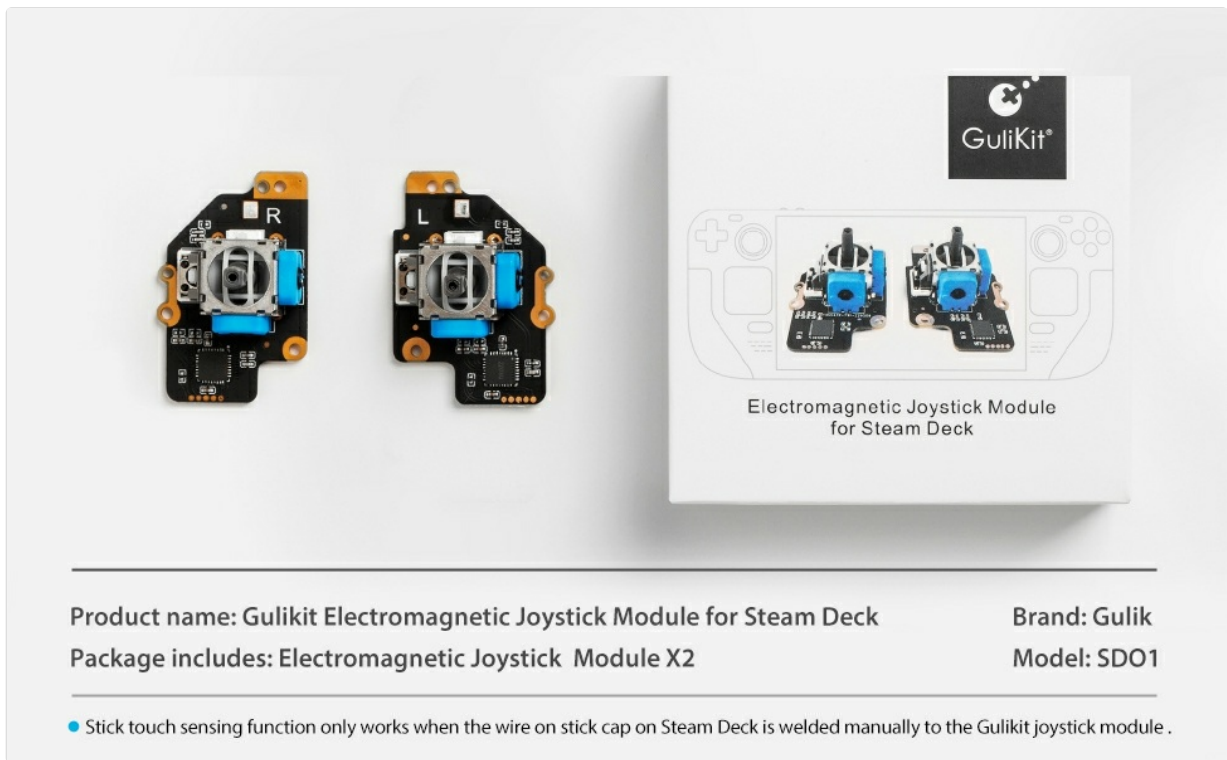


Image: The GuliKit joystick modules and included tools in their packaging.

4. SAFETY INFORMATION

To prevent potential damage to your Steam Deck during the replacement process, please observe the following safety precaution:

- **Discharge the Steam Deck battery to below 10%** before beginning any installation work. This minimizes the risk of electrical shorts or damage to components.

5. INSTALLATION GUIDE

Follow these steps carefully to replace your Steam Deck joysticks with the GuliKit Electromagnetic Joystick Modules. For visual guidance, refer to the embedded video.

5.1. Disassembly of Steam Deck

1. **Turn off** your Steam Deck completely.
2. Using the provided screwdriver, **unscrew the eight screws** located on the back shell of the Steam Deck.
3. Carefully **open the back panel** using the crowbar, gently prying along the edges.
4. Once the back panel is removed, you will see the internal components. Locate the old joysticks.
5. Identify the blue ribbon cables connecting each joystick. **Lift up the small tab** on the connector very carefully.
6. Gently **pull out the blue tab** to separate the ribbon cable from the mainboard.
7. Each joystick is held in place by three screws. **Unscrew these three screws** for the first joystick.
8. Carefully **remove the old joystick**.
9. Repeat steps 5-8 for the other joystick.



Revolutionary Technology

Hall effect sensor, longer work time

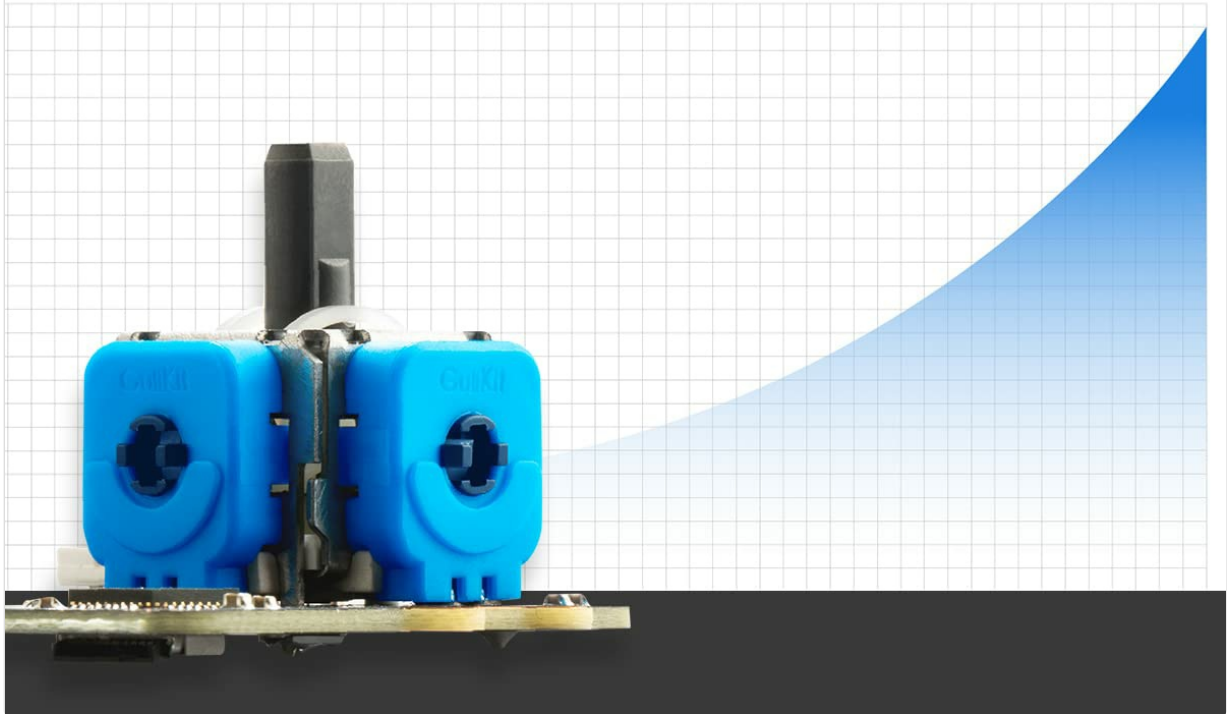


Image: Visual guide for the initial disassembly of the Steam Deck, showing removal of the back panel and locating joysticks.

GuliKit Electromagnetic Joystick Module



Image: Steps for disconnecting ribbon cables and unscrewing the old joysticks from the Steam Deck.

5.2. Preparing New Joysticks (Optional for Capacitive Touch)

If you wish to retain the capacitive touch functionality of the original joysticks, you will need to transfer a small wire. This step requires soldering.

1. From the old joystick cap, **desolder the red wire** connecting it to the joystick module. Use tweezers to hold the wire and heat the solder point with a soldering iron until the wire detaches.
2. Take one of your new GuliKit joystick modules. Locate the designated solder point for the capacitive wire.
3. Apply a small amount of solder to this pad.
4. Carefully **solder the red wire** from the old joystick cap to the new GuliKit joystick module's pad. Ensure a secure connection.
5. Place the joystick cap onto the new GuliKit joystick module, ensuring it rotates freely.
6. Repeat this process for the second joystick module.

5.3. Reassembly

1. **Install the new GuliKit joystick modules** into their respective positions.
2. **Secure each new joystick** with the three screws previously removed.
3. Gently **reconnect the blue ribbon cables** by sliding them back into their connectors and pressing down the small tab to secure them.
4. Ensure all connections are firm and the joysticks move freely.

Super Smooth Hand Feeling

Enjoy your gaming time!



Image: Steps for installing the new GuliKit joysticks and preparing for the calibration process.

5.4. Installation Video Guide

Your browser does not support the video tag.

Video: Detailed guide on how to install and calibrate the GuliKit Joystick Module for Steam Deck. This video covers the full process from disassembly to final calibration.

6. CALIBRATION

Each GuliKit joystick module has unique calibration values. Therefore, calibration is required after installation to ensure optimal performance and accuracy.

1. With the back panel still open, **turn on your Steam Deck**.
2. Locate the small button on the back of each GuliKit stick. Press this button to set the joystick into calibration mode.
3. Switch your Steam Deck to **Desktop Mode**.
4. Open the **Konsole** application.
5. In Konsole, type `thum` and then press the **Tab** key. This will auto-complete the command to `thumbstick_cal`.
6. Press **Enter** to run the calibration program.
7. Follow the on-screen instructions:
 - Release both thumbsticks to their center resting position and press 'A' key or 'Enter'.
 - Rotate both thumbsticks 360 degrees through their full deflection twice.

- Release and press 'A' key or 'Enter' again.
8. The terminal should display "Thumbstick calibration successful".
 9. Once calibration is complete, **shut down your Steam Deck**.
 10. Reassemble the back panel, ensuring all screws are tightened.

Note: If you do not have a keyboard plugged into your Steam Deck in Desktop Mode, you can press the Steam Button + X to enable the on-screen keyboard.

Refer to the Installation Video Guide in Section 5.4 for a visual walkthrough of the calibration process.

7. OPERATING INSTRUCTIONS

After successful installation and calibration, your GuliKit Electromagnetic Joystick Modules are ready for use. The Hall Effect sensors provide precise and responsive control, eliminating the common issue of stick drift. Enjoy an enhanced gaming experience with improved accuracy and durability.

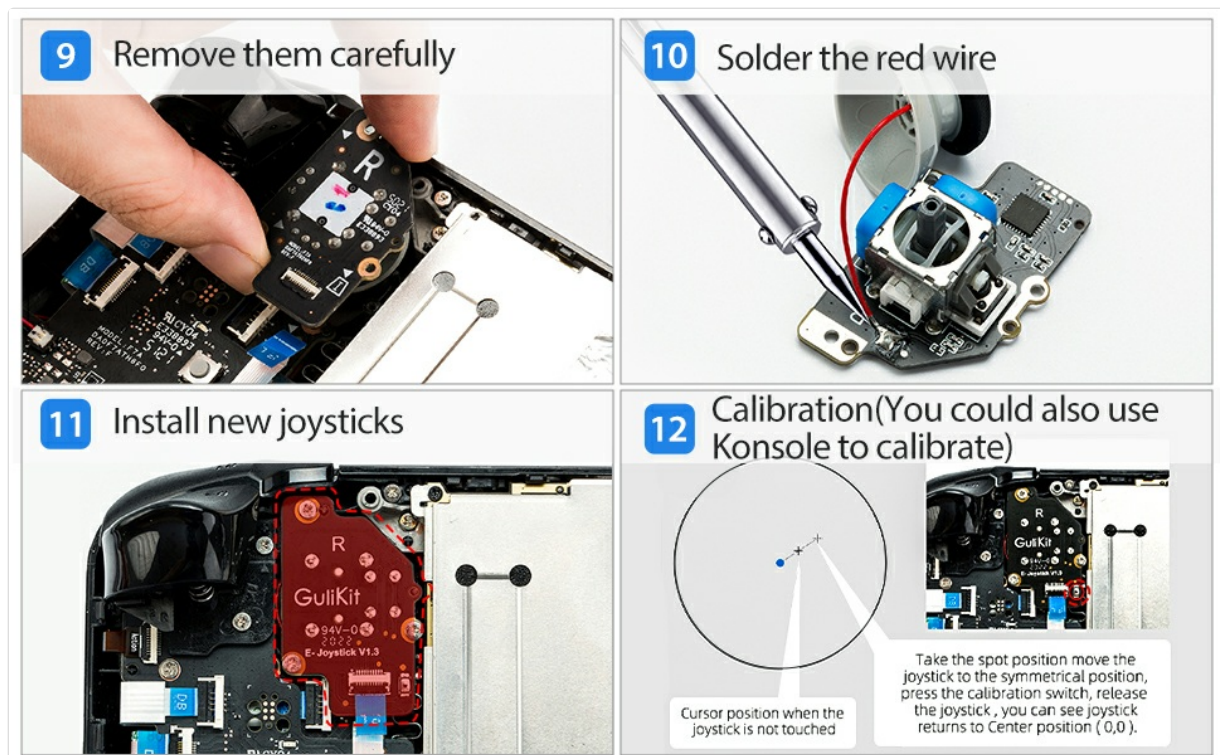


Image: A Steam Deck in use, demonstrating the smooth and precise control offered by the GuliKit joysticks.

8. MAINTENANCE

The GuliKit Electromagnetic Joystick Modules are designed for durability and wear resistance. No specific routine maintenance is required beyond general care for your Steam Deck. Keep the device clean and free from dust and debris to ensure longevity of all components.

9. TROUBLESHOOTING

9.1. Joystick Drift or Inaccurate Input

If you experience any issues such as creeping, stuttering, blind spots, dead zones, or non-centered joysticks after installation, it is likely a calibration issue.

- **Recalibrate the joysticks:** Follow the steps outlined in Section 6. Calibration. Ensure both joysticks are released to their center resting position before pressing 'A' or 'Enter' during the calibration process.
- **Verify installation:** Double-check that the ribbon cables are securely connected and the joysticks are properly seated and screwed in.

9.2. Capacitive Touch Not Working

If the capacitive touch function (finger detection on the thumbstick) is not working, ensure the red wire from the original joystick cap was correctly desoldered and resoldered to the new GuliKit module as described in Section 5.2. This step is optional and only necessary if you wish to retain this specific functionality.

10. SPECIFICATIONS

Feature	Detail
Product Name	GuliKit Electromagnetic Joystick Module
Model	SD01
Compatibility	Steam Deck (Type A Stick - Controller ID starting with "MEDA")
Sensor Type	Hall Effect Sensor
Key Features	No drift, high precision, durable, wear-resistant
Package Dimensions	3.11 x 3.03 x 1.14 inches
Item Weight	1.41 ounces
Manufacturer	Gulikit

11. WARRANTY AND SUPPORT

For any questions, technical assistance, or support regarding your GuliKit Electromagnetic Joystick Module, please contact us directly. We are committed to providing timely assistance and will reply within 24 hours.