

Manuals+

[Q & A](#) | [Deep Search](#) | [Upload](#)

[manuals.plus](#) /

› [FANTECH](#) /

› [FANTECH ARIA XD7 Wireless Gaming Mouse User Manual](#)

FANTECH XD7

FANTECH ARIA XD7 Wireless Gaming Mouse

User Manual

Model: XD7

1. INTRODUCTION

The FANTECH ARIA XD7 is a high-performance wireless gaming mouse designed for competitive gaming. It features a lightweight, ambidextrous egg shape, a precise Pixart 3395 gaming sensor, durable HUANO switches, and versatile 3-mode connectivity (wired, 2.4GHz wireless, Bluetooth). This manual provides essential information for setting up, operating, maintaining, and troubleshooting your ARIA XD7 mouse.





The FANTECH ARIA XD7 Wireless Gaming Mouse, showcasing its sleek white design.



An exploded view illustrating the internal components of the ARIA XD7 mouse, including the sensor, switches, and removable cover.

2. WHAT'S IN THE BOX

Upon unboxing your FANTECH ARIA XD7, please verify that all the following components are included:

WHAT'S IN THE BOX

1. Aria XD7
2. Solid Rear Cover
3. Type-C Charging Cable
4. User Manual
5. Aria Stickers
6. USB Wireless Receiver
7. Wireless Extension Adapter
8. 1 Set PTFE Mouse Skates
9. 1 Set Anti-Slip Grips



All items included in the FANTECH ARIA XD7 retail packaging.

- Aria XD7 Wireless Gaming Mouse
- Solid Rear Cover (interchangeable)
- Type-C Charging Cable
- User Manual (this document)
- Aria Stickers
- USB Wireless Receiver
- Wireless Extension Adapter
- 1 Set PTFE Mouse Skates
- 1 Set Anti-Slip Grips

3. SETUP

3.1 Charging the Mouse

Before first use, it is recommended to fully charge the mouse. Connect the provided Type-C charging cable to the mouse and a USB power source. The mouse features up to 40 hours of battery life and takes approximately 2 hours for a full charge.

3.2 Connecting the Mouse

The FANTECH ARIA XD7 supports three connectivity modes:

- **Wired Mode:** Connect the mouse directly to your computer using the provided Type-C charging cable. The mouse will function immediately and charge simultaneously.
- **2.4GHz Wireless Mode:** Insert the USB Wireless Receiver into an available USB port on your computer. The mouse should automatically connect. For optimal signal, use the Wireless Extension Adapter to position the receiver closer to the mouse.
- **Bluetooth 5.0 Mode:** Ensure your device has Bluetooth enabled. On the mouse, long-press the connectivity mode button (usually located on the underside) to enter pairing mode. Select "FANTECH ARIA XD7" from your device's Bluetooth settings to connect.

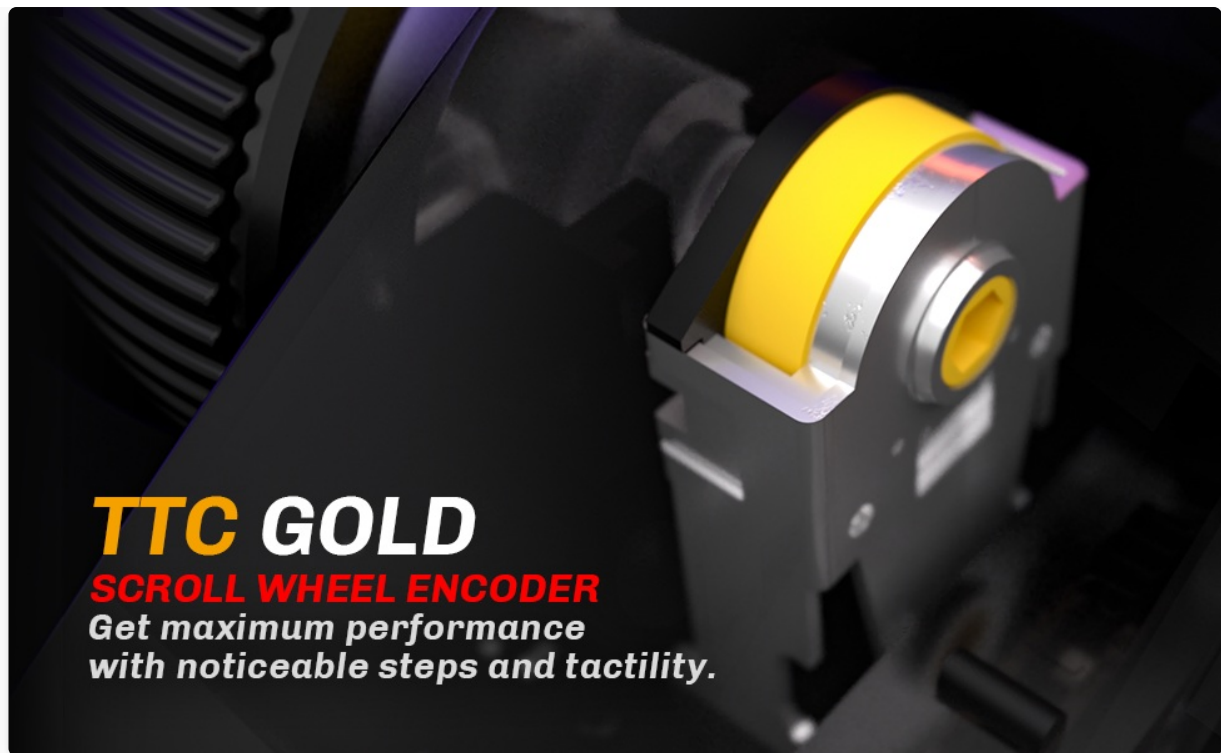


Illustration of stable 2.4GHz wireless connectivity, ensuring no delay or connection loss.

4. OPERATING INSTRUCTIONS

4.1 Basic Functions

- **Left/Right Click:** Standard mouse buttons for primary interactions. The ARIA XD7 uses high-end switches for crisp clicks.
- **Scroll Wheel:** Used for vertical scrolling. The TTC Gold scroll wheel encoder provides precise, tactile steps.
- **Side Buttons:** Typically used for forward/backward navigation in web browsers or customizable in software.



A detailed view of the TTC Gold Scroll Wheel Encoder, designed for maximum performance and tactile feedback.

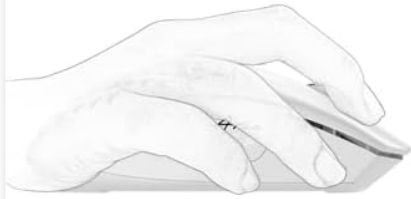
4.2 DPI Adjustment

The ARIA XD7 features on-the-fly DPI switching, allowing you to adjust sensitivity from 800 to 26000 DPI. The DPI adjustment button is located on the underside of the mouse to prevent accidental changes during intense gameplay.

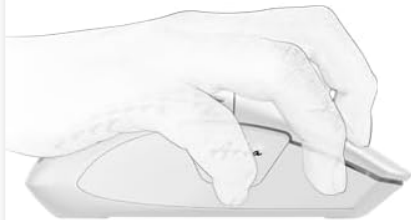
4.3 Recommended Grip Styles

The ambidextrous egg shape of the ARIA XD7 is designed to accommodate various grip styles, particularly Claw and Fingertip grips. The mouse's dimensions are optimized for comfortable use across different hand sizes.

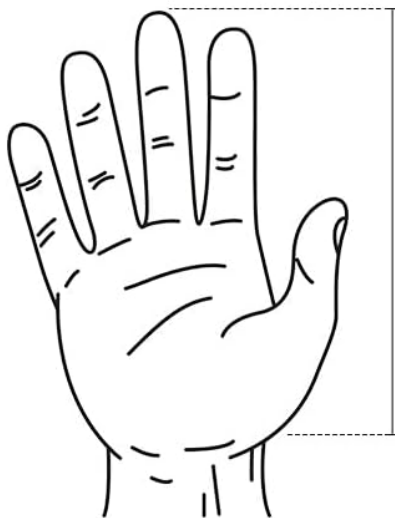
RECOMMENDED GRIP STYLE



CLAW



FINGERTIP



RECOMMENDED HAND SIZE FOR EVERY GRIP

CLAW: 17-20cm

FINGERTIP: 17-20cm

Visual guide for recommended Claw and Fingertip grip styles, along with a hand measurement chart for optimal fit.

5. CUSTOMIZATION AND SOFTWARE

To unlock the full potential of your FANTECH ARIA XD7, download the official FANTECH software from the manufacturer's website. The software allows for extensive personalization, including:

- Adjusting DPI settings and creating custom profiles.
- Programming buttons for macros and specific functions.
- Setting the adjustable polling rate up to 1000Hz.
- Fine-tuning Lift-Off Distance (LOD) for precision on various surfaces.



The FANTECH Aria software interface, demonstrating options for key settings, DPI adjustments, and profile management.

6. MAINTENANCE

To ensure the longevity and optimal performance of your ARIA XD7 mouse, follow these simple maintenance guidelines:

- **Cleaning:** Use a soft, dry cloth to wipe the mouse surface. For stubborn dirt, slightly dampen the cloth with water or a mild cleaning solution. Avoid harsh chemicals.
- **Sensor:** Keep the optical sensor on the underside clean and free of dust or debris. Use a cotton swab if necessary.
- **Storage:** When not in use for extended periods, store the mouse in a clean, dry environment away from extreme temperatures.

7. TROUBLESHOOTING

If you encounter any issues with your FANTECH ARIA XD7 mouse, please refer to the official Troubleshooting Guide for detailed solutions. A PDF version is available for download: [FANTECH ARIA XD7 Troubleshooting Guide \(PDF\)](#).

Common issues and tips:

- **Connectivity Issues:** Ensure the USB receiver is properly inserted or Bluetooth is correctly paired. Try a different USB port.
- **Battery Life:** If battery life seems shorter than expected, ensure the mouse is fully charged. Avoid leaving the mouse connected to a charger unnecessarily after it's full.
- **Scroll Wheel Malfunction:** Check for any physical obstructions. If issues persist, refer to the troubleshooting guide.
- **Software/Driver Problems:** Ensure you have the latest software and firmware installed from the official FANTECH website. Some issues, like double-clicking, may be resolved by updating firmware or adjusting debounce time in the software.
- **Unresponsive Mouse:** Try restarting your computer, reconnecting the mouse, or switching between

wired and wireless modes.

8. TECHNICAL SPECIFICATIONS

Feature	Specification
Product Dimensions	4.49 x 2.56 x 1.54 inches
Item Weight	2.08 ounces
Item Model Number	XD7
Batteries	1 Lithium Polymer battery required (included)
Date First Available	July 23, 2022
Manufacturer	FANTECH
Brand	FANTECH
Color	XD7-White
Connectivity Technology	Bluetooth, 2.4GHz Wireless, Wired (USB-C)
Special Features	Ergonomic Design, Lightweight, Programmable Buttons, Rechargeable, Wireless
Movement Detection Technology	Optical (Pixart 3395 Gaming Sensor)
DPI Range	800-26000 DPI (On-the-Fly Adjustable)
Acceleration	Up to 50G ACC
IPS	650 IPS
Clicks Lifetime	Huano TBSPD 80 Million Times
Battery Capacity	300mAh
Battery Life	Up to 40 Hours
Charging Time	Approx 2 Hours
Cord Length	1.8m Type-C Paracord
Weight	59gr ±1gr

9. WARRANTY AND SUPPORT

FANTECH products are manufactured to high-quality standards. For warranty information and support, please refer to the warranty card included with your product or visit the official FANTECH website. If you require technical assistance or have questions not covered in this manual, please contact FANTECH

customer support through their official channels.

Related Documents - XD7

	<p>Fantech Aria XD7 Pro Wireless Gaming Mouse User Manual</p> <p>User manual for the Fantech Aria XD7 Pro Wireless Gaming Mouse, covering setup, features, specifications, and troubleshooting for this lightweight, high-performance gaming peripheral.</p>
	<p>Fantech ARIA XD7 Pro Wireless Gaming Mouse User Manual</p> <p>User manual for the Fantech ARIA XD7 Pro Wireless Gaming Mouse, detailing specifications, features, and usage instructions.</p>
	<p>Fantech Aria II XD7v2 Gaming Mouse Quick Start Guide Setup & Features</p> <p>Get started with your Fantech Aria II XD7v2 gaming mouse. This guide covers specifications, product tour, wired, Bluetooth, and Strikespeed wireless connection methods, LED indicators, and DPI settings.</p>
	<p>Fantech Aria II Pro XD7V2P Wireless Gaming Mouse Quick Start Guide</p> <p>A comprehensive guide to setting up and using the Fantech Aria II Pro XD7V2P wireless gaming mouse, including specifications, connection methods, and indicator light explanations.</p>
	<p>Fantech WGC5s Wireless Gaming Mouse: Quick Start Guide & Specifications</p> <p>Comprehensive guide for the Fantech WGC5s wireless gaming mouse, covering specifications, product tour, connection instructions, battery status, and DPI settings. Download software and get support from Fantech.</p>
	<p>Fantech Helios XD3 Pro Wireless RGB Gaming Mouse User Manual</p> <p>User manual for the Fantech Helios XD3 Pro wireless RGB gaming mouse, detailing its features, specifications, key functions, and usage instructions for optimal gaming performance.</p>