

Manuals+

[Q & A](#) | [Deep Search](#) | [Upload](#)

Manuals.plus /

› [Technology Parts Store](#) /

› Technology Parts Store Blade and Ground Drive Belt Instruction Manual for Craftsman Tractor 917.289740

Technology Parts Store 917.289740

Instruction Manual

TECHNOLOGY PARTS STORE BLADE AND GROUND DRIVE BELT FOR CRAFTSMAN TRACTOR MODEL 917.289740

[Introduction](#)

[Safety Information](#)

[Installation](#)

[Maintenance](#)

[Troubleshooting](#)

[Specifications](#)

[Warranty &
Support](#)

1. Introduction

This manual provides essential instructions for the proper installation and maintenance of the Technology Parts Store Blade Drive Belt and Ground Drive Belt, designed for compatibility with Craftsman Tractor Model 917.289740. These belts are critical components for the efficient operation of your lawn tractor's cutting deck and drive system.

The blade drive belt transmits power from the engine to the mower deck, enabling the blades to rotate and cut grass. The ground drive belt connects the engine to the transmission, allowing the tractor to move forward and backward.



Image: Two black V-belts, representing the blade and ground drive belts. These belts are essential for the operation of your Craftsman tractor.

2. Safety Information

Always prioritize safety when performing maintenance or repairs on your lawn tractor. Failure to follow safety precautions can result in serious injury.

- **Disconnect Power:** Before beginning any work, ensure the tractor's engine is off, the spark plug wire is disconnected, and the parking brake is engaged to prevent accidental starting.
- **Wear Protective Gear:** Always wear heavy-duty work gloves to protect your hands from sharp edges and pinch points during installation. Safety glasses are also recommended.
- **Allow Cooling:** If the tractor has been recently operated, allow sufficient time for the engine and exhaust components to cool down to prevent burns.
- **Secure the Tractor:** If lifting the tractor for access, ensure it is securely supported on jack stands or ramps to prevent it from falling.
- **Read Tractor Manual:** Refer to your Craftsman Tractor Model 917.289740 owner's manual for specific safety guidelines and detailed instructions related to your equipment.

3. Installation

This section provides general guidance for replacing the blade drive belt and ground drive belt. Specific steps may vary slightly depending on your tractor's configuration. Always consult your tractor's service manual for precise instructions.

3.1. Blade Drive Belt Installation (5/8" x 148")

The blade drive belt is responsible for transferring power to the mower blades. Its replacement typically involves accessing the mower deck.

1. **Prepare the Tractor:** Ensure the tractor is on a flat, stable surface. Disconnect the spark plug wire and engage the parking brake.
2. **Remove Mower Deck:** Follow your tractor's manual to safely remove the mower deck from beneath the tractor. This usually involves detaching linkage rods, springs, and the PTO cable.
3. **Note Belt Routing:** Before removing the old belt, carefully observe or draw a diagram of its routing around all pulleys. This is crucial for correct installation of the new belt.
4. **Remove Old Belt:** Release any tensioners or idler pulleys as needed to remove the worn blade drive belt.
5. **Install New Belt:** Route the new 5/8" x 148" blade drive belt around the engine pulley, deck pulleys, and idler pulleys according to your routing diagram. Ensure the belt is seated correctly in all pulley grooves.
6. **Tension Belt:** Re-engage any tensioners or idler pulleys to apply proper tension to the new belt.
7. **Reinstall Mower Deck:** Reattach the mower deck to the tractor, ensuring all connections are secure.

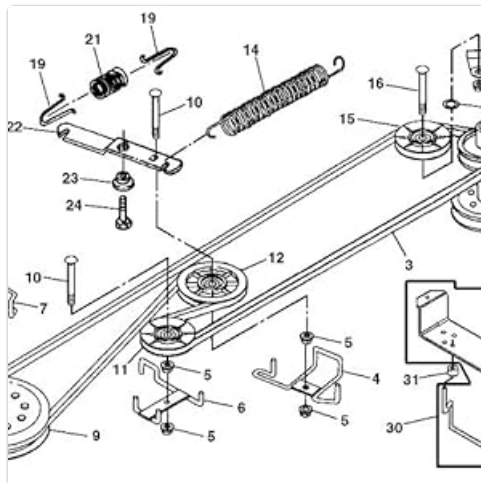


Image: A diagram illustrating the routing of a belt around various pulleys, including an adjustment mechanism. This visual aid is helpful for understanding belt installation paths.

3.2. Ground Drive Belt Installation (1/2" x 82")

The ground drive belt powers the tractor's wheels. Accessing this belt often requires lifting the tractor or working from underneath.

1. **Prepare the Tractor:** Ensure the tractor is on a flat, stable surface. Disconnect the spark plug wire and engage the parking brake. If lifting, secure the tractor with jack stands.
2. **Locate Belt Path:** Identify the ground drive belt's path from the engine pulley to the transmission pulley, often involving several idler pulleys.
3. **Note Belt Routing:** As with the blade belt, carefully observe or draw a diagram of the old belt's routing before removal.
4. **Remove Old Belt:** Release tensioners and carefully remove the old 1/2" x 82" ground drive belt.
5. **Install New Belt:** Route the new ground drive belt according to your diagram, ensuring it is correctly seated on all pulleys.
6. **Tension Belt:** Re-engage tensioners to ensure proper belt tension.

7. **Verify Clearance:** Check that the new belt does not rub against any frame components or other parts.

Important Note: These belts are compatible replacements and are not OEM (Original Equipment Manufacturer) belts. The OEM number is provided for reference to help identify the correct belt size and type for your Craftsman Tractor Model 917.289740.

4. Maintenance

Regular inspection and maintenance of your drive belts will extend their lifespan and ensure optimal performance of your Craftsman tractor.

- **Visual Inspection:** Periodically inspect both belts for signs of wear, such as cracks, fraying, glazing, or missing chunks. Check for any foreign objects caught in the belt path.
- **Tension Check:** Ensure belts have proper tension. Belts that are too loose can slip, causing poor performance, while belts that are too tight can put excessive strain on pulleys and bearings. Refer to your tractor's manual for correct tensioning procedures.
- **Cleanliness:** Keep belts and pulleys free of grass clippings, dirt, and debris. Accumulations can cause premature wear and slippage.
- **Replacement:** Replace belts immediately if they show significant signs of wear or damage. Worn belts can break unexpectedly, leading to downtime and potential damage to other components.



Image: A detailed cross-section of a V-belt, illustrating its internal construction with cords and rubber layers. Understanding this structure helps in identifying signs of wear.

5. Troubleshooting

If you experience issues with your Craftsman tractor's drive system or mower deck, the belts may be a contributing factor. Here are some common problems and potential solutions:

- **Blades Not Engaging or Slipping:**
 - Check the blade drive belt for wear, cracks, or stretching.
 - Ensure the blade drive belt is correctly routed and tensioned.
 - Inspect the mower deck pulleys for damage or seizing.
- **Tractor Not Moving or Moving Slowly:**
 - Examine the ground drive belt for wear, damage, or improper tension.
 - Verify the ground drive belt is correctly routed around all pulleys.
 - Check for obstructions in the belt path.
- **Excessive Noise or Vibration:**
 - Inspect both belts for damage or misalignment.
 - Check all pulleys for wear, damage, or loose bearings.
 - Ensure all guards and covers are properly secured.
- **Belt Comes Off Pulleys:**
 - Verify correct belt routing.
 - Check for worn or bent idler pulleys or tensioners.
 - Ensure the belt is the correct size for your application.

If troubleshooting steps do not resolve the issue, it is recommended to consult a qualified service technician or refer to your tractor's comprehensive service manual.

6. Specifications

Component	Description
Product Type	Blade Drive Belt & Ground Drive Belt Set
Compatibility	Craftsman Tractor Model 917.289740
Blade Drive Belt	5/8" width x 148" length (Equivalent to 5L1480 B145)
Ground Drive Belt	1/2" width x 82" length (Equivalent to A80 4L820)
Material	Rubber
Belt Style	Classic V-belt
Manufacturer	Aftermarket (Technology Parts Store)

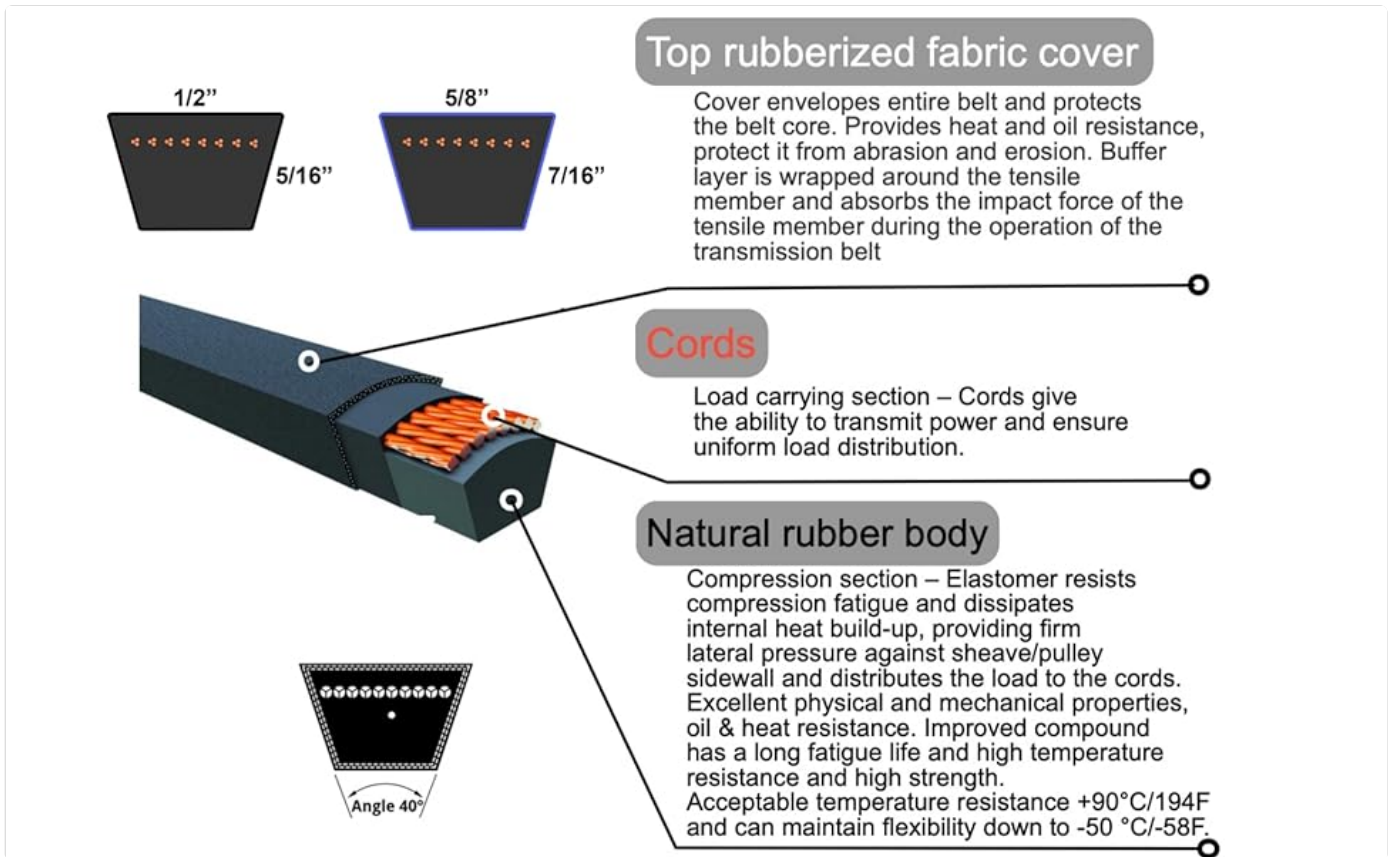


Image: A diagram showing various V-belt profiles (1/2", 5/8", 7/16") and a detailed cutaway of a belt's construction, highlighting the rubberized fabric cover, cords, and natural rubber body. This illustrates the quality and design of the belts.

7. Warranty & Support

For specific warranty information regarding these replacement belts, please refer to the product listing or contact the seller directly. Warranty terms may vary.

If you require further assistance with installation, troubleshooting, or have questions about the product, please contact Technology Parts Store customer support through the platform where the purchase was made.

© 2023 Technology Parts Store. All rights reserved.

Craftsman is a registered trademark of its respective owner. This product is an aftermarket replacement part and is not affiliated with or endorsed by Craftsman.