

[Manuals.plus /](#)

[› Hengweili /](#)

[› Hengweili Single Din Car Stereo KH6610 Instruction Manual](#)

Hengweili KH6610

Hengweili Single Din Car Stereo Instruction Manual

MODEL: KH6610



Front view of the Hengweili Single Din Car Stereo, showing the display, control knob, and various buttons.

Introduction

This manual provides detailed instructions for the installation, operation, and maintenance of your Hengweili Single Din Car Stereo, Model KH6610. Please read this manual thoroughly before using the product to ensure proper function and to prevent damage. Keep this manual for future reference.

Package Contents

Upon opening the package, please verify that all the following items are included:

- Hengweili Single Din Car Stereo Unit
- Remote Control
- Power Cables
- Release Keys & Blot (Mounting Hardware)
- Instruction Manual



Image showing the car stereo unit, remote control, power cables, mounting hardware, and the instruction manual included in

the package.

Safety Information

- Always ensure the vehicle is parked and the engine is off before attempting installation or maintenance.
- Incorrect wiring can cause damage to the unit or the vehicle's electrical system. If unsure, consult a qualified technician.
- Do not operate the unit in a way that distracts you from driving.
- Keep the unit away from water and excessive moisture.
- Use only the specified power supply (12V DC).

Setup and Installation

Wiring Diagram

Refer to the following diagram for correct wiring connections. Ensure all connections are secure and insulated to prevent short circuits.



Rear view of the car stereo unit with a detailed wiring diagram indicating connections for power, speakers, and auxiliary inputs/outputs.

- **Yellow Wire:** Constant 12V (Battery Positive)
- **Red Wire:** ACC (Ignition Switch)

- **Black Wire:** Ground (Chassis Ground)
- **Blue Wire:** Auto Antenna / Amplifier Remote
- **Speaker Wires:** Connect to corresponding vehicle speakers (e.g., White/White-Black for Front Left, Grey/Grey-Black for Front Right, Green/Green-Black for Rear Left, Violet/Violet-Black for Rear Right).
- **RCA Outputs:** For external amplifier connections.
- **Video Output:** For connecting an external display for DVD playback.

Physical Installation

The unit is a standard single DIN size. Before installation, ensure the mounting bracket is properly secured in your vehicle's dashboard opening. Remove any transport screws from the unit before inserting it into the bracket.



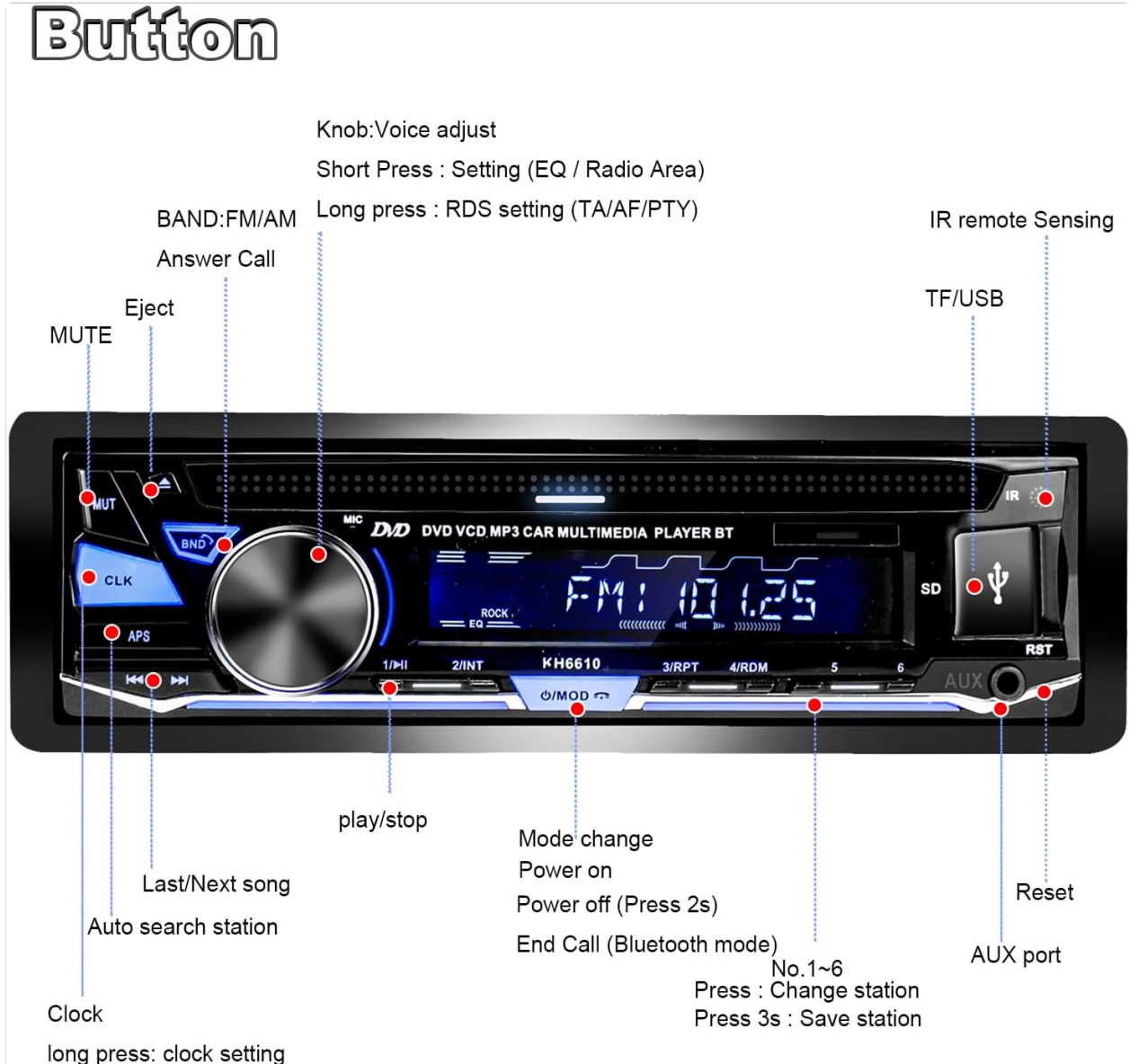
Diagram illustrating the dimensions of the car stereo unit and the installation bracket, with an arrow indicating to remove the bracket and install it first.

- Carefully remove the existing car stereo from your vehicle.
- Install the provided metal mounting sleeve into the dashboard opening. Bend the tabs to secure it.
- Connect all necessary wiring harnesses to the rear of the new stereo unit.
- Slide the stereo unit into the mounting sleeve until it clicks into place.
- Ensure the unit is flush with the dashboard.

Operating Instructions


Front Panel Controls

Familiarize yourself with the buttons and controls on the front panel of your car stereo:





A detailed diagram highlighting each button and knob on the car stereo's front panel, with labels for their respective functions.

Control	Function (Short Press)	Function (Long Press)
Knob	Volume Adjust / EQ / Radio Area	RDS Setting (TA/AF/PTY)
MUTE	Mute/Unmute Audio	N/A
CLK	Display Clock	Clock Setting
BND/AM/FM	Band Selection (FM1/FM2/FM3/AM1/AM2)	Answer Call (Bluetooth Mode)
APS	Auto Search Station	N/A
◀ ◀ / ▶ ▶	Last/Next Song / Seek Station	N/A
▶ / INT	Play/Pause / Intro Scan	N/A

O/MOD 	Mode Change / Power On	Power Off (Press 2s) / End Call (Bluetooth Mode)
1-6 Buttons	Change Station (Radio) / Track Selection (Media)	Save Station (Radio, Press 3s)
Eject	Eject CD/DVD	N/A
RST	Reset Unit (Use a pointed object)	N/A
AUX Port	Connect External Audio Device	N/A
TF/USB Port	Insert TF Card / USB Drive	N/A

Basic Operation

- **Power On/Off:** Long press the **O/MOD**  button for 2 seconds to turn the unit on or off.
- **Volume Control:** Rotate the main knob to adjust the volume level.
- **Mode Selection:** Short press the **O/MOD**  button to cycle through available modes (Radio, CD/DVD, USB, SD, AUX, Bluetooth).

Radio Operation (AM/FM/RDS)

USB / AUX / SD Playback



The car stereo display showing an FM radio frequency (101.25) and indicating RDS mode is active.

- **Band Selection:** Press the **BND/AM/FM** button to switch between FM1, FM2, FM3, AM1, and AM2 bands.
- **Automatic Search:** Long press the **APS** button to automatically scan and save strong stations.
- **Manual Tuning:** Use the **<< / >>** buttons for manual frequency adjustment.
- **Preset Stations:** Short press buttons **1-6** to select a saved station. Long press buttons **1-6** (for 3 seconds) to save the current station to that preset number.
- **RDS Functions:** Long press the main knob to access RDS settings (AF, TA, PTY).

CD/DVD Playback

CD/DVD Playback



The car stereo unit with a disc inserted, demonstrating CD/DVD playback capability, and showing a connected external monitor for video output.

- **Insert Disc:** Gently insert a CD or DVD into the disc slot with the label side facing up. The unit will automatically begin playback.
- **Supported Formats:** The unit supports DVD, MPEG-4, VCD, SVCD, MP3, CD, and JPEG picture CD formats.
- **Eject Disc:** Press the **Eject** button to remove the disc.
- **Video Output:** Connect an external monitor to the video output port on the rear of the unit for DVD video display.

Bluetooth Function

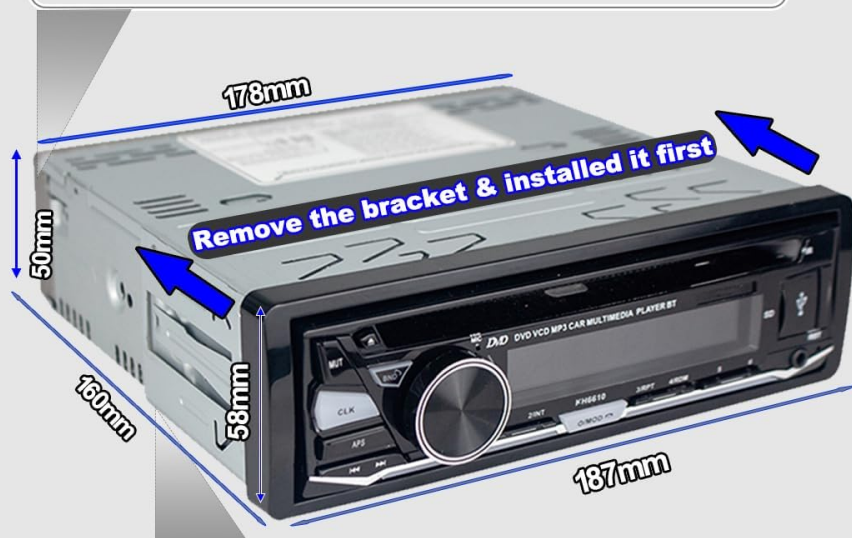


An in-car perspective showing the car stereo unit and a smartphone mounted, indicating active Bluetooth connection for hands-free calling and music streaming.

- **Pairing:** Activate Bluetooth on your mobile device. Search for available devices and select 'Hengweili' (or similar name). Enter '0000' if a PIN is required.
- **Hands-Free Calling:** When a call comes in, press the **BND/AM/FM** button to answer. Press the **O/MOD** button to end the call.
- **Music Streaming:** Once paired, you can play audio from your phone through the car stereo. Use the **<< / >>** buttons to skip tracks.

USB/SD/AUX Playback

Package



Remote control



Power cables



Release keys & Blot



Manual

The car stereo unit highlighting the TF Card slot, AUX input, and USB port for connecting various external media devices.

- **USB/SD Card:** Insert a USB flash drive or TF (Micro SD) card into the respective port. The unit will automatically switch to USB/SD mode and begin playback. Supported audio formats include MP3, WMA, WAV, MPE. Maximum capacity for TF card is 32GB.
- **AUX Input:** Connect an external audio device (e.g., smartphone, MP3 player) to the 3.5mm AUX input jack using an audio cable. Select AUX mode on the stereo.

APP Control

USB/TF-CARD/AUX Port



A smartphone displaying the user interface of the dedicated application for controlling the car stereo, showing various

functions like radio, music, and settings.

- **Download App:** Search for the official control app (refer to product packaging or manufacturer website for app name) on your smartphone's app store.
- **Connect:** Ensure your phone is connected to the car stereo via Bluetooth. Open the app and follow the on-screen instructions to establish a connection.
- **Control:** Use the app to control various functions of the stereo, including mode selection, volume, track skipping, and radio tuning.

Remote Control



The infrared remote control unit for the car stereo, featuring various buttons for playback, volume, mode, and other functions.

- Point the remote control towards the IR sensor on the car stereo's front panel.
- The remote allows control over functions such as power, volume, mode, track selection, and radio presets.
- Ensure the remote has working batteries.

Maintenance

- **Cleaning:** Use a soft, dry cloth to clean the front panel. Do not use abrasive cleaners or solvents.
- **Disc Care:** Handle CDs and DVDs by their edges. Keep them clean and free of scratches.
- **Avoid Extreme Temperatures:** Do not expose the unit to direct sunlight for extended periods or to extreme cold.

Troubleshooting

Problem	Possible Cause	Solution
No power	Incorrect wiring; Blown fuse; Loose connection	Check power and ground wiring. Inspect vehicle's fuse box and the unit's fuse. Ensure all connections are secure.
No sound	Volume too low; Mute activated; Incorrect speaker wiring	Increase volume. Deactivate mute. Check speaker connections.
Disc not playing	Disc inserted incorrectly; Damaged disc; Unsupported format	Re-insert disc correctly. Try a different disc. Ensure disc format is supported.
Bluetooth not connecting	Bluetooth not enabled on phone; Unit not in pairing mode; Interference	Ensure phone's Bluetooth is on. Put unit in Bluetooth mode. Try re-pairing. Move closer to the unit.
Poor radio reception	Antenna not connected; Weak signal area; Damaged antenna	Check antenna connection. Try tuning to a stronger station. Inspect antenna for damage.
Remote control not working	Dead batteries; Obstruction to IR sensor; Remote malfunction	Replace batteries. Ensure clear line of sight to IR sensor.

Specifications

Feature	Detail
Product Dimensions	7.01 x 7.24 x 1.97 inches
Item Weight	3.21 pounds
Item Model Number	KH6610
Brand	Hengweili
Connectivity Technology	USB, Bluetooth, AUX
Controller Type	Hand Control (Remote)
Special Feature	RDS
Compatible Devices	Speakers, Smartphones, USB Drives, SD Cards
Connector Type	RCA, 3.5mm AUX, USB, SD
Audio Output Mode	Stereo

Surround Sound Channel Configuration	5.1 (via RCA outputs to compatible system)
Video Encoding	MPEG-4 (for DVD playback)
Color	Black
Supported Disc Formats	DVD, MPEG-4, VCD, SVCD, MP3, CD, JPEG
Supported Audio Formats (USB/SD)	MP3, WMA, WAV, MPE
TF Card Max Capacity	32 GB
Power Supply	12V DC
FM Frequency Range	87.5-108 MHz
AM Frequency Range	522-1620 KHz

Warranty and Support

This product is covered by a manufacturer's warranty. Please refer to the warranty card included in your package for specific terms and conditions. For technical support or warranty claims, please contact Hengweili customer service through the retailer where the product was purchased or visit the official Hengweili website for contact information.