

## FERUERW 280kg/600lb

# FERUERW 600LBs/280KG Electric Magnetic Lock User Manual

Model: 280kg/600lb

## 1. INTRODUCTION

This manual provides detailed instructions for the installation, operation, and maintenance of your FERUERW 600LBs/280KG Electric Magnetic Lock. Please read this manual thoroughly before installation and use to ensure proper function and safety. This electromagnetic lock is designed for secure access control in various door types.

## 2. SAFETY INFORMATION

- Ensure all electrical connections are made by a qualified professional to prevent electric shock or damage to the device.
- Verify the power supply voltage (DC12V) matches the lock's requirements before connecting.
- Do not attempt to disassemble or modify the lock, as this may void the warranty and compromise safety.
- Keep the magnetic lock and armature plate clean and free of debris to maintain optimal holding force.
- This device is designed for secure access control. Ensure proper installation to prevent unauthorized entry.

## 3. PRODUCT OVERVIEW

The FERUERW 600LBs/280KG Electric Magnetic Lock is constructed from high-strength aluminum, featuring professional hard anodization for corrosion resistance and waterproof performance. It operates silently and includes a built-in reverse current protection device for enhanced safety.

### 3.1. Key Features

- **Upgrade Material:** Made of high-strength aluminum, professionally hard anodized, corrosion-resistant, waterproof, and treated with a special anti-rust process. Operates without noise.
- **Wide Range Of Applications:** Suitable for wooden doors, metal doors, glass doors, fireproof doors, and

more.

- **Safety:** Built-in reverse current protection device ensures higher performance and user safety.
- **NC Mode:** Locked while supplied with power.

### 3.2. Components



**Figure 1:** FERUERW 600LBs/280KG Electric Magnetic Lock and included hardware. This image displays the main magnetic lock unit, the armature plate, and a bag containing various screws, washers, and an Allen wrench for installation.



**High  
Security**



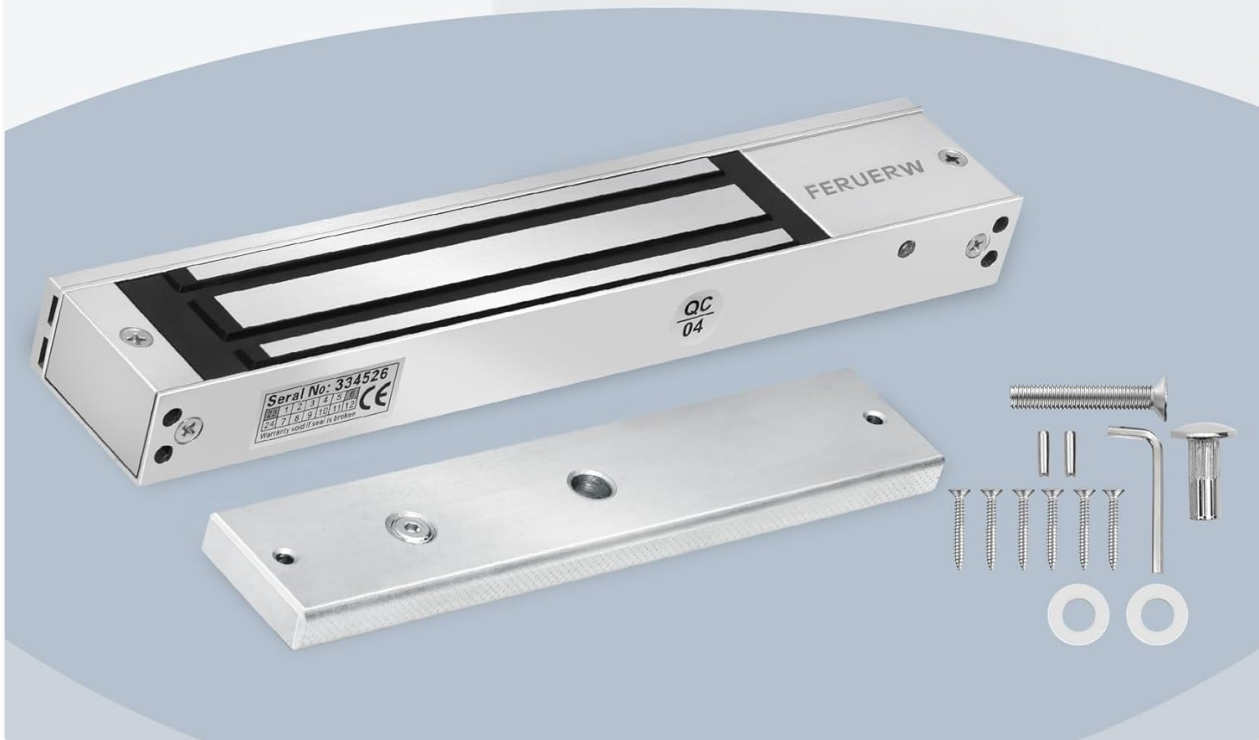
**Exquisite  
Case**



**Holding  
Force**



**Corrosion  
Protection**



**Figure 2:** Visual representation of key features including high security, exquisite case design, strong holding force, and corrosion protection.

## 4. SETUP AND INSTALLATION

Proper installation is crucial for the optimal performance and security of your magnetic lock. Follow these steps carefully.

### 4.1. Dimensions

# Size

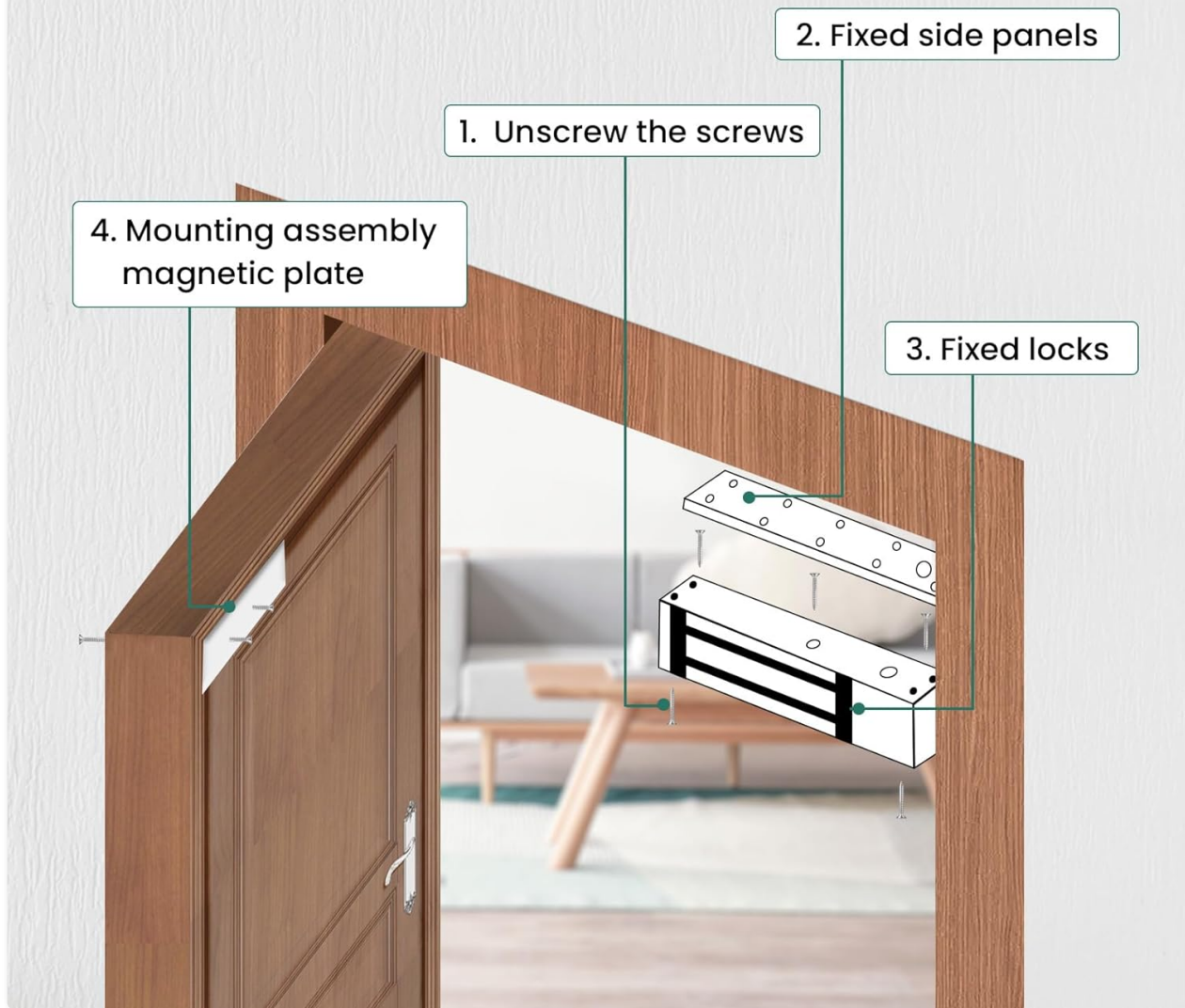


**Figure 3:** Detailed dimensions of the magnetic lock and armature plate, showing lengths and widths in inches.

## 4.2. Installation Steps

1. **Prepare the Door Frame:** Identify the mounting location on the door frame. Ensure the surface is clean and flat.
2. **Mount the Hanging Strip:** Unscrew the bolts from the main lock unit to separate the hanging strip. Securely attach the hanging strip to the door frame using the provided screws.
3. **Install the Main Lock Unit:** Slide the main magnetic lock unit onto the installed hanging strip. Tighten the side screws to secure it.
4. **Position the Armature Plate:** Use the provided sticker or template to mark the drilling points on the door leaf, ensuring it aligns perfectly with the magnetic lock when the door is closed.
5. **Drill Holes and Install Armature Plate:** Drill the marked holes. Install the mushroom nut on the back of the door leaf. Attach the armature plate to the door leaf using the M8 screws, adding rubber rings for proper elasticity and adjustment.
6. **Wiring:** Connect the power supply (DC12V) to the magnetic lock. Red wire for positive input (+), Black wire for negative input (-). Refer to the wiring diagram in the included instruction sheet for specific connections to your access control system.

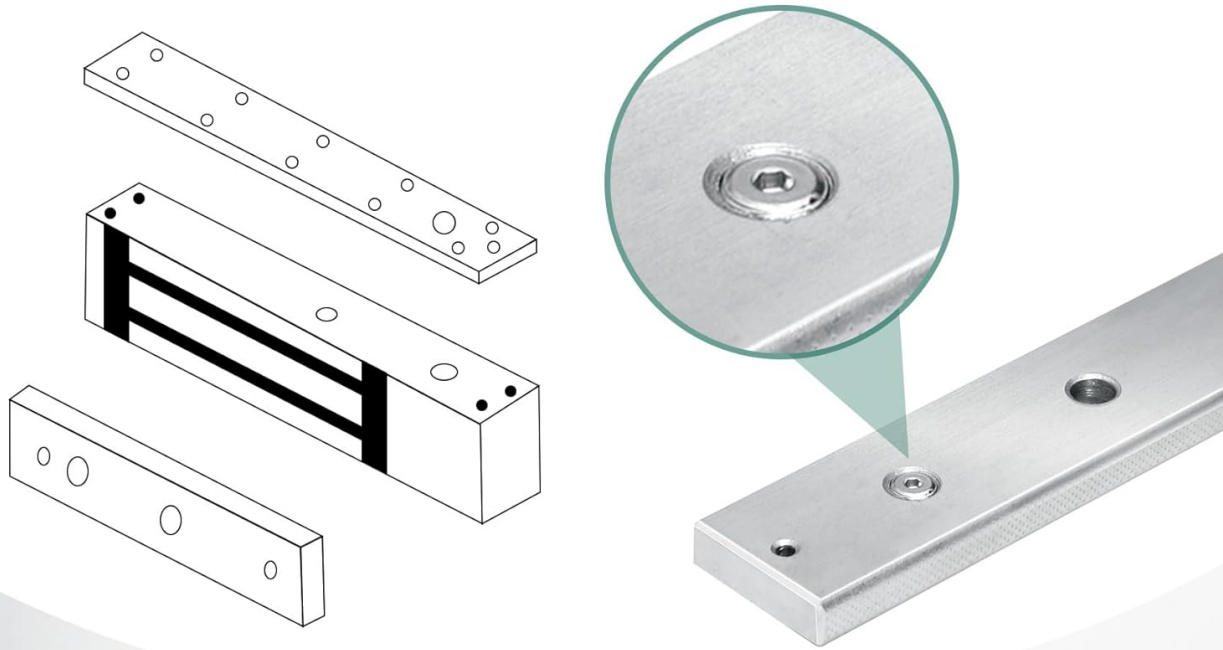
# Installation Diagram



**Figure 4:** An illustration showing the steps for installing the magnetic lock on a door frame and the armature plate on the door.



# Attention:



- 1** The armature plate screws should not be fixed too tightly during installation. Ensure that there is proper elasticity to facilitate adjustment to the proper position.
- 2** Please check the voltage before connecting and make sure it is 12V.
- 3** Wipe the surface of the lock body properly to keep it clean for strong holding power.

**Figure 5:** Important notes for installation, including not overtightening armature plate screws, checking voltage, and keeping the lock surface clean.

## 4.3. Installation Videos

**Video 1:** This video demonstrates the installation process of the FERUERW 600LBs/280KG Electric Magnetic Lock, showing how to mount the unit and armature plate.

**Video 2:** A visual guide to installing the 600lbs Electric Magnetic Electromagnetic Lock, detailing the steps for secure mounting.

## 5. OPERATING INSTRUCTIONS

The FERUERW Electric Magnetic Lock operates in NC (Normally Closed) mode, meaning it is locked when power is supplied and unlocks when power is removed. This is a fail-safe design, ensuring the door unlocks during a power outage for emergency egress.

- **Locking:** When power is supplied to the unit, the electromagnet activates, creating a strong magnetic bond with the armature plate, thereby locking the door.
- **Unlocking:** When power is cut (e.g., via an access control system, button, or power failure), the

electromagnet deactivates, releasing the armature plate and allowing the door to open.

- **Indicator Light:** A red LED indicates when power is supplied and the lock is engaged.

## 6. MAINTENANCE

Regular maintenance ensures the longevity and reliable performance of your magnetic lock.

- **Cleaning:** Periodically wipe the surface of the lock body and armature plate with a clean, dry cloth to remove dust and debris. A clean surface is essential for maintaining strong holding power.
- **Inspection:** Regularly check all mounting screws and connections to ensure they are secure. Tighten any loose screws.
- **Armature Plate Adjustment:** Ensure the armature plate screws are not fixed too tightly during installation. There should be proper elasticity to facilitate adjustment to the correct position, allowing for full contact with the electromagnet.

## 7. TROUBLESHOOTING

If you encounter issues with your magnetic lock, refer to the following common problems and solutions:

- **Reduced Holding Force:**
  - Ensure the magnetic lock and armature plate surfaces are clean and free of any foreign objects or debris.
  - Check for proper alignment between the lock and armature plate. Misalignment can significantly reduce holding force.
  - Verify that the armature plate screws are not overtightened, allowing for slight movement and full contact.
  - Confirm the thickness of the door material. Using a thinner metal than recommended for the armature plate can reduce the effective holding force.
- **Lock Not Engaging/Disengaging:**
  - Check the power supply. Ensure it is providing the correct DC12V and that all wiring connections are secure.
  - Inspect the indicator light on the lock. If it's not illuminated when power is applied, there may be a wiring issue or power supply problem.
  - If using an access control system, verify its functionality and wiring to the magnetic lock.

## 8. SPECIFICATIONS

Parameter	Detail
Brand	FERUERW
Model Name	280kg/600lb
Lock Type	Electromagnetic Lock
Special Feature	Keyless
Voltage	DC12V

Current Consumption	0.11A ~0.15A
Holding Force	280kg / 600lbs
Mode	NC mode (locked while supplied with power)
Material	Aluminum
Item Dimensions (L x W x H)	10 x 2 x 2 inches
Item Weight	3.54 pounds
Recommended Uses	Access control for wooden, metal, glass, and fireproof doors
Included Components	Electromagnetic lock, Mounting hardware, Basic wiring/connectors

## 9. WARRANTY

---

FERUERW Electromagnetic Locks are warranted against defects in material and workmanship while used in normal operating conditions. Please retain your proof of purchase for warranty claims.

## 10. SUPPORT

---



For any questions, technical assistance, or support regarding your FERUERW Electric Magnetic Lock, please contact our professional after-sales service team. We are committed to providing excellent customer service.

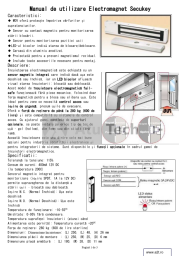
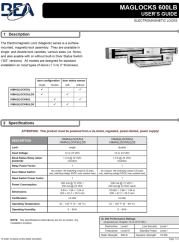






**Figure 6:** The FERUERW customer service team is available to assist with product inquiries and support.

## Related Documents - 280kg/600lb

<p><b>Electromagnetic lock user manual</b></p> 	<p><a href="#">Electromagnetic Lock User Manual - FERUERW 280kg/600lb</a></p> <p>User manual for the FERUERW 280kg (600lb) electromagnetic lock. Features include MOV surge protection, magnetic bond sensor, door position sensor, bi-color LED status indicator, and anodized aluminum housing. Covers specifications, warranty, and installation with L, LZ, and U-brackets for various door types.</p>
<p><b>Electromagnetic lock user manual</b></p> 	<p><a href="#">Electromagnetic Lock User Manual - FERUERW 280kg/600lb</a></p> <p>User manual for the FERUERW 280kg (600lb) electromagnetic lock. Features include MOV surge protection, magnetic bond sensor, door position sensor, bi-color LED status indicator, and anodized aluminum housing. Covers specifications, warranty, and installation with L, LZ, and U-brackets for various door types.</p>

	<p><a href="#">Secukey Electromagnetic Lock User Manual</a></p> <p>User manual for the Secukey electromagnetic lock, detailing features, specifications, installation, and warranty information. Covers MOV surge protection, magnetic contact sensor, door status monitoring, and LED indicators.</p>
	<p><a href="#">BEA MAGLOCKS 600LB User's Guide: Electromagnetic Lock Installation and Specifications</a></p> <p>Comprehensive user's guide for BEA MAGLOCKS 600LB series electromagnetic locks. Covers installation, specifications, precautions, and electrical wiring for single and double lock configurations.</p>
	<p><a href="#">BEA UL Maglocks 600LB User's Guide</a></p> <p>User's guide for BEA's UL Maglocks 600LB series of electromagnetic locks, covering installation, specifications, and precautions.</p>
	<p><a href="#">INTEX Air Mattress FAQ: Leaks, Patches, Warranties, and Valves</a></p> <p>Find answers to common questions about INTEX air mattresses, including how to find and patch leaks, warranty information, and how to identify different valve types.</p>