

## Tokluck TO-P5801

# Tokluck PS5 Horizontal Stand with 3-Level Cooling Fans and Controller Charging Station

Model: TO-P5801 | Brand: Tokluck

### 1. IMPORTANT SAFETY INFORMATION

Please read all instructions carefully before using this product. Keep this manual for future reference.

- This product is designed exclusively for the original PlayStation 5 (PS5) Disc and Digital Editions. It is **not compatible** with PS5 Slim or PS5 Pro consoles.
- Ensure proper ventilation around the PS5 console and the cooling stand.
- Do not expose the product to water or excessive moisture.
- Avoid disassembling or modifying the product, as this may void the warranty and cause damage.
- Keep out of reach of children.

### 2. PACKAGE CONTENTS

Verify that all items are present in the package:

- 1 x Left Stand for PS5 Editions
- 1 x Right Stand with Fans and Chargers
- 1 x EVA Foam for PS5 Digital Edition (for proper fit)
- 1 x Headset Holder
- 1 x Safety Screw
- 1 x Custom Cable (for power connection)

Video: [Unboxing and overview of the Tokluck PS5 Horizontal Stand package contents.](#)

### 3. PRODUCT OVERVIEW

The Tokluck PS5 Horizontal Stand is designed to enhance your gaming setup by providing efficient cooling, convenient controller charging, and organized storage for your headset. It ensures your PS5 console remains stable and cool during operation.



Image: The Tokluck PS5 Horizontal Stand with the PS5 console, two controllers, and a headset in place.

## PS5 Horizontal Stand with Cooling Fan and Controller Charger with Headset Holder

- Compatible with PS5 Disc & Digital Edition
- Not fit for PS5 Slim (2023) / PS5 Pro (2024)
- High Power Fan 3-Levels Speed
- Quick Charge 2.0 Hours
- Headset Holder Detachable Design
- Perfect compatibility Disc & Digital Version

Image: Detailed overview of the stand's features, highlighting cooling, charging, and headset storage.

# Not Fit PS5 Slim / PS5 Pro Console



Image: Visual representation indicating incompatibility with PS5 Slim and PS5 Pro models.

This stand is specifically designed for the original PS5 console. It is **not compatible** with the newer PS5 Slim or PS5 Pro versions. Please ensure you have the correct PS5 model before installation.

## 4. SETUP AND INSTALLATION

Follow these steps to correctly install your Tokluck PS5 Horizontal Stand:

1. **Prepare the Left Stand:** If you have a PS5 Digital Edition, insert the provided EVA foam pad into the left stand for a secure fit. For the Disc Edition, this step is not necessary.
2. **Secure the Console:** Place your PS5 console upside down onto the left stand. Use the included safety screw to firmly lock the console to the stand.
3. **Install the Right Stand:** Position the console vertically and attach the right stand (which contains the cooling fans and charging ports) to the other side of the PS5 console. Ensure it clicks securely into place.
4. **Connect Power:** Use the custom cable to connect the stand to a USB port on your PS5 console. This provides power for the cooling fans and controller charging.
5. **Attach Headset Holder:** Combine the two parts of the headset holder and insert it into the designated slot on the right stand.
6. **Place Controllers:** Dock your PS5 DualSense or DualSense Edge controllers onto the charging stations.



# Quick Installation Guidance

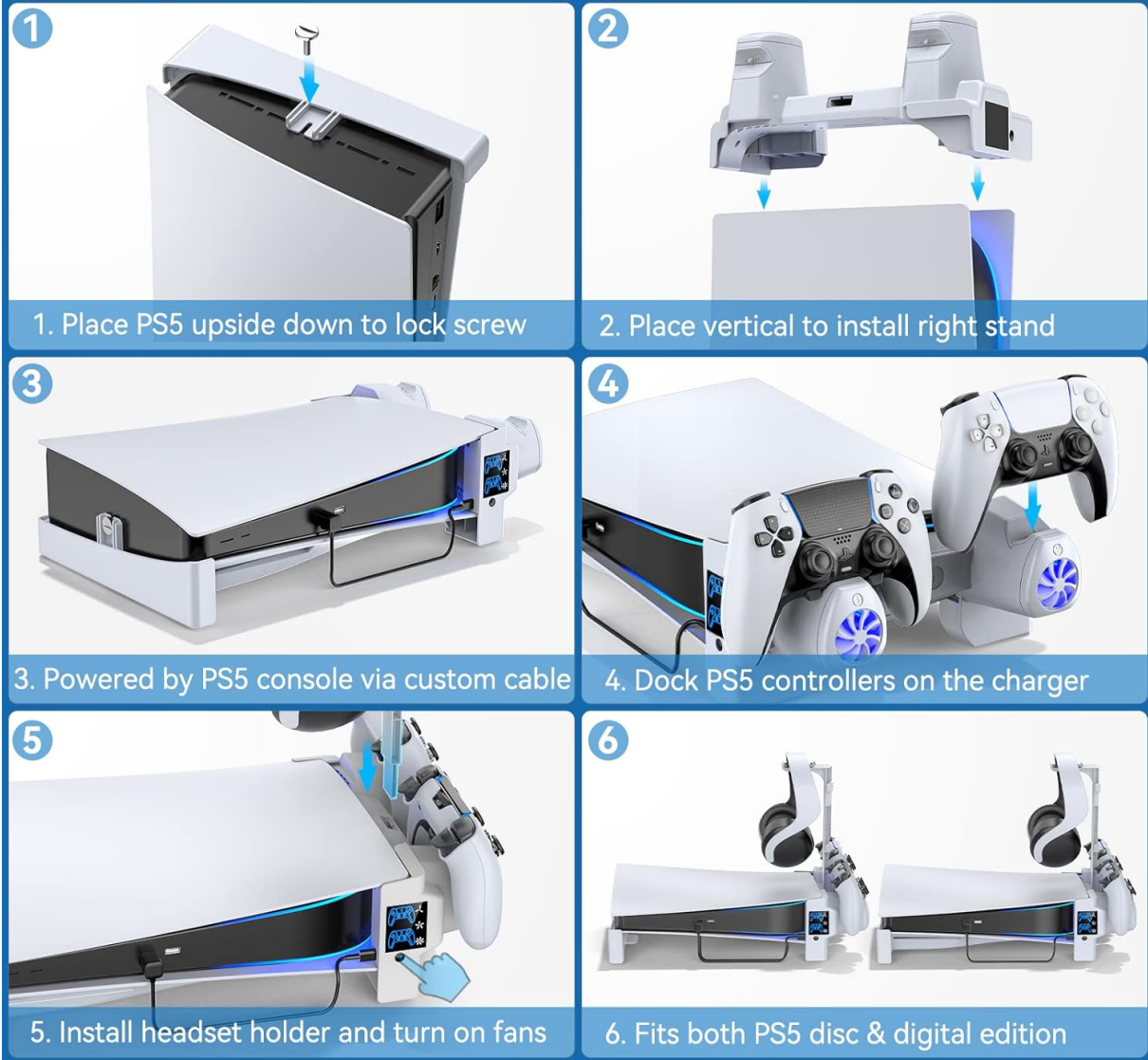


Image: Quick installation guidance showing the steps to assemble the stand with the PS5 console.

Video: Detailed installation process for the Tokluck PS5 Horizontal Stand.

## 5. OPERATING INSTRUCTIONS

### 5.1. Cooling Fan Operation

The stand features two powerful cooling fans with three adjustable speed levels to optimize airflow and dissipate heat from your PS5 console.

- **Power Button:** Press the power button on the front of the right stand to turn the fans on or off.
- **Speed Adjustment:** Each press of the power button cycles through the three fan speeds:
  - **High:** 4000 RPM
  - **Medium:** 3700 RPM
  - **Low:** 3400 RPM



Image: Illustration of the 3-level powerful cooling fan speed settings and their effect on console temperature.

Video: Demonstration of the fan speed adjustment on the Tokluck PS5 Horizontal Stand.

## 5.2. Controller Charging

The stand features two charging stations for your PS5 DualSense or DualSense Edge controllers.

- **Fast Charging:** Controllers can be fully charged within approximately 2 hours.
- **LED Indicators:** The charging stations have LED indicators:
  - Blue: Controller is fully charged.
  - Red: Controller is currently charging.
- **Charging Protection:** Built-in smart chip provides over-heated, short-circuit, over-current, and over-voltage protection.



# 2.0H Fast Charge 2 DualSense Controllers

Powered by PS5 Console via Custom Cable



Image: Two PS5 controllers charging on the stand, illustrating the 2-hour fast charging capability.

## EASY INSTALLATION



## What's in the Package?

- 1 x Left Stand for Both PS5 Editions
- 1 x Right Stand with Fans and Chargers
- 1 x EVA Foam for PS5 Digital Editions
- 1 x Safety Screw
- 1 x Headset Holder
- 1 x Custom Cable

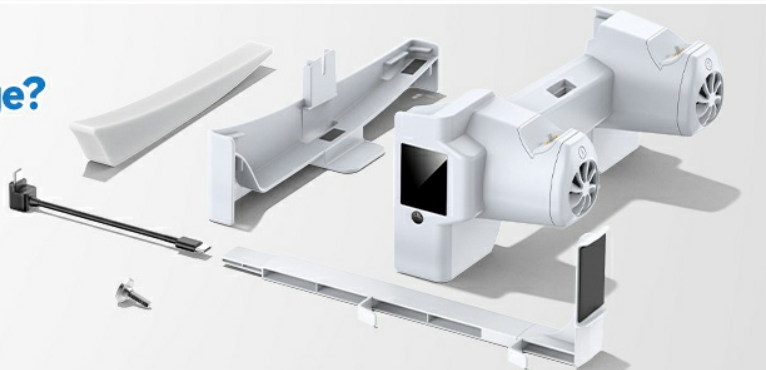


Image: Illustration of the smart chip and various charging protections for the controllers.

### 5.3. Headset Holder

The detachable headset holder provides a convenient place to store your gaming headset, keeping your gaming area tidy.

### 5.4. Standby Mode Functionality

The cooling and charging functions can operate even when your PS5 console is in standby mode, provided the USB ports are configured to supply power.

- To enable this, navigate to your PS5 settings: **Settings > System > Power Saving > Features Available in Rest Mode > Supply Power to USB Ports > Always.**



Image: Guide on configuring PS5 settings to allow charging and cooling in standby mode.

## 6. MAINTENANCE

- Clean the stand regularly with a soft, dry cloth to prevent dust accumulation, especially around the fan vents.
- Do not use abrasive cleaners or solvents.
- Ensure the fan vents are clear of obstructions for optimal cooling performance.

## 7. TROUBLESHOOTING

### 7.1. Fans Not Turning On

- Check if the custom cable is securely connected to both the stand and a powered USB port on your PS5 console.
- Ensure the PS5 console is powered on or in a standby mode that supplies power to USB ports (refer to Section 5.4).
- Press the fan power button on the stand to cycle through speeds or turn it on.

### 7.2. Controllers Not Charging

- Verify that the controllers are correctly seated in the charging docks.
- Confirm the custom cable is properly connected and the PS5 is supplying power to USB ports.
- Check the LED indicators on the charging stations (Red for charging, Blue for charged).

### 7.3. Stand Feels Unstable

- Ensure the safety screw is fully tightened, securing the PS5 console to the left stand.
- Confirm the right stand is properly clamped to the console.
- Verify that the EVA foam pad is correctly installed for PS5 Digital Edition consoles.

## Stable Enough

Keeps the system stable and solves the wobble problem



Screw Storage & Fixed



Foam Pads for PS5 Digital



Anti-Slip Pads



Image: Features ensuring the stability of the PS5 console on the horizontal stand.

## 8. SPECIFICATIONS

<b>Model Number</b>	TO-P5801
<b>Product Dimensions</b>	4.96 x 5.12 x 11.42 inches
<b>Item Weight</b>	1.1 pounds
<b>Compatible Devices</b>	PS5 Digital & Disc Console (Not PS5 Slim/Pro)



<b>Cooling Fan Speeds</b>	3 Levels (4000 RPM, 3700 RPM, 3400 RPM)
<b>Controller Charging Time</b>	Approx. 2 hours
<b>Color</b>	White

## 9. WARRANTY AND SUPPORT

For warranty information or technical support, please refer to the product packaging or contact Tokluck customer service directly. Keep your purchase receipt as proof of purchase.