

Bush Home CAB045HRG

Bush Furniture Cabot 60W L-Shaped Sit-to-Stand Desk with Hutch - User Manual

1. PRODUCT OVERVIEW

The Bush Furniture Cabot 60W L-Shaped Sit-to-Stand Desk with Hutch is designed to provide an ergonomic and functional workspace. This desk features a Lift-n-Lock desktop that allows for easy adjustment between sitting and standing positions, promoting a healthier work routine. The unit includes a fixed work surface, a single file drawer, a box drawer, and a hutch with both open and closed storage compartments.



Image 1.1: The Bush Furniture Cabot 60W L-Shaped Sit-to-Stand Desk with Hutch in a home office setting.

Key Features:

- **60W Computer Desk with Drawers:** Provides ample workspace and storage.
- **3 Position Sit to Stand Desk Return:** Lift-n-Lock desktop adjusts to 37, 40, or 42 inches from the floor.
- **60W Desk Hutch:** Offers open and closed shelving for flexible storage and display.
- **File Drawer:** Smooth full-extension ball bearing slides accommodate letter, legal, and A4-size paperwork.
- **Wire Management:** Built-in grommets on the fixed surface help keep cables organized.
- **Durable Construction:** Fixed surface supports up to 200 pounds; standing desk return supports up to 20 pounds when raised.

2. SAFETY INFORMATION

Please read and understand all safety instructions before assembly and use. Failure to follow these instructions may result

in injury or damage to the product.

- **Wall Attachment:** Always secure the desk to the wall using the provided hardware to prevent tipping, especially when the desk is in its standing position. Do not use the desk if it is not properly secured.
- **Weight Limits:** Adhere to the specified weight capacities: 200 pounds for the fixed surface and 20 pounds for the adjustable standing desk return when extended. Overloading can cause instability and damage.
- **Assembly:** Assembly requires two people. Ensure all components are correctly installed and fasteners are tightened before use.
- **Children and Pets:** Keep children and pets away from the desk during assembly and operation. Moving parts can pose a pinch hazard.
- **Stability:** Place the desk on a level surface. Avoid placing heavy items on the edges of the adjustable desktop when raised.

3. SETUP AND ASSEMBLY

This product requires assembly. All necessary assembly tools are included. It is recommended that two people perform the assembly to ensure safety and ease of construction.

Before You Begin:

- Unpack all components and verify against the parts list (refer to the included assembly guide).
- Clear a spacious area for assembly.
- Keep small parts out of reach of children.

Assembly Steps:

1. Follow the step-by-step instructions provided in the separate assembly manual included with your product.
2. Ensure all cam locks, screws, and dowels are securely fastened at each stage.
3. Install the wall attachment hardware as directed to prevent tipping.
4. Verify the smooth operation of drawers and the Lift-n-Lock mechanism after assembly.



Image 3.1: Close-up view of the Lift-n-Lock desktop mechanism, wire management grommets, and full-extension file drawer.

4. OPERATING INSTRUCTIONS

Adjusting the Sit-to-Stand Desktop:

The desk features a Lift-n-Lock mechanism for easy height adjustment. This allows you to transition between sitting and standing positions.

1. **To Raise:** Gently lift the adjustable desktop. The Lift-n-Lock mechanism will engage at one of the three preset standing heights: 37, 40, or 42 inches from the floor. Ensure it clicks securely into place.
2. **To Lower:** Lift the desktop slightly to disengage the lock, then gently guide it down to the desired lower position. Ensure it locks securely before placing items on it.

The adjustable surface supports up to 20 pounds when extended. Avoid placing excessive weight on this section when raised.



Image 4.1: Detail of the Lift-n-Lock mechanism that enables smooth height adjustments.

Drawer Operation:

- The file drawer operates on smooth full-extension ball bearing slides, allowing complete access to contents.
- The box drawer provides additional storage for smaller office supplies.

Hutch Storage:

- The hutch features a closed compartment with a fluted glass door and open cubby spaces for organizing and displaying items.

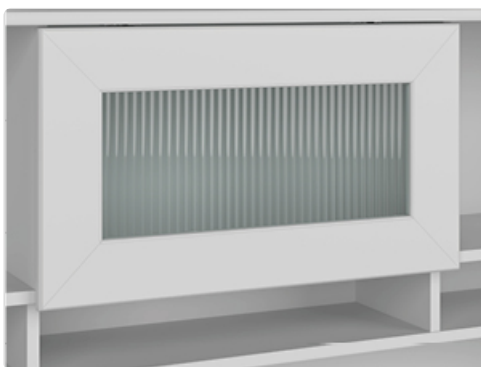


Image 4.2: Detail of the fluted glass door on the hutch, providing enclosed storage.



Image 4.3: Wire management grommets integrated into the desk surface for cable organization.

5. MAINTENANCE AND CARE

Proper care will extend the life and appearance of your desk.

- **Cleaning:** Wipe surfaces with a damp cloth. Avoid harsh chemicals or abrasive cleaners, which can damage the finish.
- **Spills:** Clean spills immediately to prevent staining or damage to the engineered wood.

- **Hardware:** Periodically check and tighten all assembly hardware to ensure stability.
- **Sunlight:** Avoid prolonged exposure to direct sunlight to prevent fading or discoloration.



Image 5.1: Detail of the Heather Gray engineered wood finish, highlighting its texture.

6. TROUBLESHOOTING

If you encounter any issues with your desk, please refer to the following common solutions:

- **Desk Wobbles:** Ensure the desk is on a level surface. Check all assembly hardware and tighten any loose connections. Verify wall attachment hardware is securely installed.
- **Drawers Stick:** Check that the drawer slides are properly aligned and free of obstructions. Ensure the drawer is not overloaded.
- **Lift-n-Lock Mechanism Not Engaging:** Ensure no objects are obstructing the mechanism. Apply gentle, even pressure when lifting or lowering. If the issue persists, re-check assembly of the sit-to-stand return.
- **Missing Parts:** If any parts are missing or damaged upon arrival, contact customer support immediately.

7. SPECIFICATIONS



Image 7.1: Dimensional diagram of the Bush Furniture Cabot L-Shaped Desk with Hutch, including overall and internal storage measurements.

Feature	Detail
Model Number	CAB045HRG
Brand	Bush Home
Shape	L-Shape
Overall Dimensions (D x W x H)	69.17" x 66.3" x 66.3"

Item Weight	240 Pounds
Color	Heather Gray
Base Material	Engineered Wood
Top Material Type	Engineered Wood
Special Feature	Adjustable (Sit-to-Stand)
Fixed Surface Weight Capacity	200 Pounds
Adjustable Surface Weight Capacity	20 Pounds (when raised)
Adjustable Height Positions	3 (37, 40, 42 Inches)
Number of Drawers	2 (1 File, 1 Box)
Number of Shelves	3 (Open) + 1 (Enclosed in Hutch)
Required Assembly	Yes
Recommended People for Assembly	2
Certifications	ANSI/SOHO standards

8. WARRANTY AND SUPPORT

Warranty Information:

This Bush Furniture product is backed by a **1 Year Manufacturer's Warranty**. This limited warranty covers defects in materials and workmanship under normal use. Please retain your proof of purchase for warranty claims.

Customer Support:

For assembly assistance, missing parts, or warranty inquiries, please contact Bush Home customer support. You can find contact information on the Bush Home website or through your retailer. Visit the [Bush Home Store](#) for more information and product details.

9. PRODUCT VIDEO

Your browser does not support the video tag.

Video 9.1: An overview of the Bush Home Cabot Collection, showcasing various configurations and features, including the sit-to-stand functionality.