

AquaMiracle AP2400P

AquaMiracle All-in-One Pond Aerator User Manual

Model: AP2400P

Brand: AquaMiracle

1. INTRODUCTION

This user manual provides detailed instructions for the AquaMiracle All-in-One Pond Aerator, model AP2400P. This kit is designed to provide efficient aeration for outdoor ponds up to 1000 gallons, promoting a healthy and stable environment for aquatic life. Please read this manual thoroughly before installation and operation to ensure safe and optimal performance.

2. SAFETY INSTRUCTIONS

- Always disconnect the power supply before performing any maintenance, installation, or troubleshooting.
- Do not operate the unit if the power cord or plug is damaged. Contact qualified personnel for repair or replacement.
- Ensure the power outlet is properly grounded and protected by a Ground Fault Circuit Interrupter (GFCI) for outdoor use.
- Keep the aerator pump in a dry, protected location, away from direct water exposure and extreme temperatures.
- Do not submerge the pump unit in water. Only the air stones and air lines are designed for submersion.
- Keep out of reach of children and pets.

3. PACKAGE CONTENTS

The AquaMiracle All-in-One Pond Aerator kit includes the following components:

- 1 x AquaMiracle Pond Aerator Pump
- 2 x 30ft Vinyl Airline Tubes
- 2 x 2-inch Air Stones
- 2 x Check Valves
- 2 x Replacement Air Filter Pads

All-in-1

Comes with everything you need to aerate your pond



Check Valve x 2



30ft Vinyl Airline x 2



Air Filter Pad x 2



2" Air Stone x 2

Image: All components included in the AquaMiracle All-in-One Pond Aeration Kit, showing the pump, airline tubes, air stones, check valves, and filter pads.

4. SETUP

1. **Pump Placement:** Place the aerator pump in a dry, elevated location near your pond, protected from rain and direct sunlight. Ensure it is above the pond's water level to prevent backflow.
2. **Connect Airline Tubes:** Connect one end of each 30ft vinyl airline tube to the air outlets on the pump.
3. **Install Check Valves:** Install the check valves inline on each airline tube, between the pump and the air stones. Ensure the check valve is oriented correctly to allow air flow away from the pump and prevent water from flowing back into the pump if power is lost.
4. **Attach Air Stones:** Attach an air stone to the other end of each airline tube.

5. **Position Air Stones:** Carefully place the air stones into your pond. For general aeration, position them at a suitable depth to ensure even oxygen distribution. For winter ice prevention, refer to the 'Operation' section.
6. **Power Connection:** Once all connections are secure and the pump is safely positioned, plug the power cord into a GFCI-protected electrical outlet.

The All-in-1 Pond Aeration Kit



Image: The AquaMiracle pond aerator pump connected to airline tubes, air stones, and check valves, ready for installation.

Powerful, Energy Efficient Whisper-quiet



Air Output Adjustable



**Anti-corrosion Metal
Hose Adapter**



Unique texture inside the housing to minimize the noise



Air Filter for Clean Air

Image: An AquaMiracle pond aerator pump placed next to a pond with its air lines extending into the water, demonstrating a typical setup.

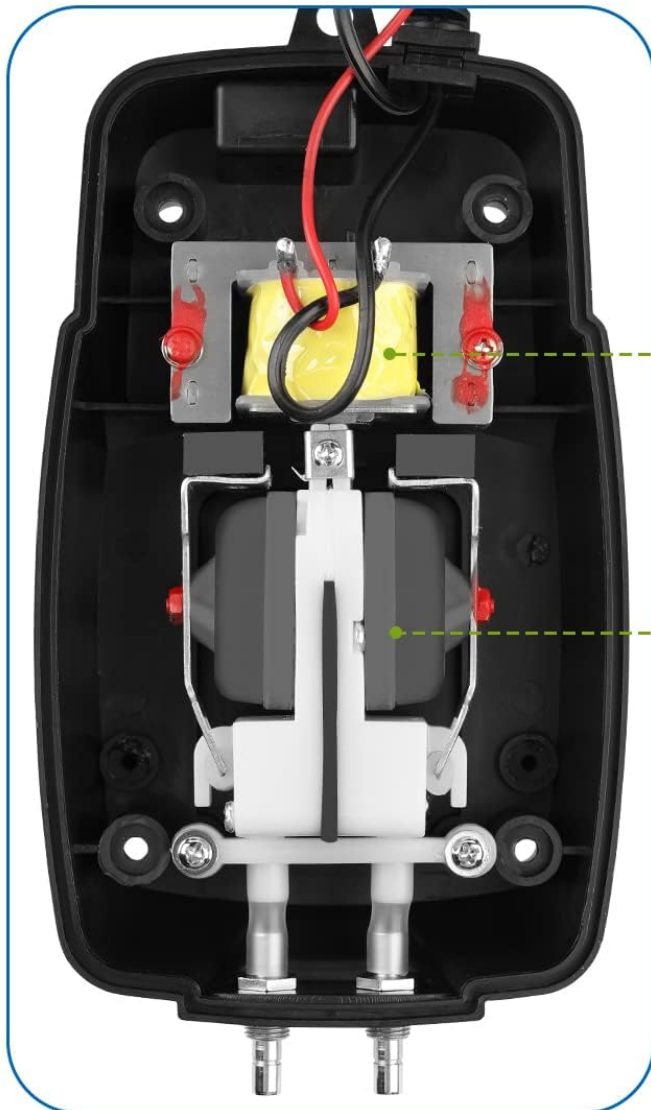
5. OPERATION

The AquaMiracle Pond Aerator is designed for continuous operation. It does not feature an on/off switch and will begin operating once plugged into a power source.

Air Output Adjustment

The air output volume can be adjusted using the dial located on the top of the pump unit. Rotate the dial to increase or decrease the airflow to suit your pond's specific needs.

Safe & Durable for 24/7



Motor Protected
With Isolated Tape

Sulfurized Rubber
Diaphragm



Fabricated with Craftsmanship

Image: Close-up view of the AquaMiracle aerator pump, highlighting the air output adjustable dial on top and the anti-corrosion metal hose adapter.

Dual Functionality

This aerator serves two primary functions:

1. **Oxygenation:** The pump effectively adds oxygen to your pond, which is crucial for the health of fish and plants. Increased oxygen levels also promote beneficial biological processes that help maintain water quality. This unit is ideal for ponds up to 1,000 gallons.

Function 2 – Disrupt Ice Formation

When the pump is working, the surface water will keep moving. It helps prevent the water from freezing during winter, creating a hole for your koi to have enough oxygen to breathe.



IMPORTANT

During the winter, move the air stones to HALF your maximum depth to avoid ice formation.

Image: A vibrant pond filled with koi fish, demonstrating the oxygenation function of the aerator, which is ideal for ponds up to 1,000 gallons.

2. **Disrupt Ice Formation:** During colder months, continuous operation of the pump keeps the surface water moving, helping to prevent the formation of solid ice. This creates a vital breathing hole for your fish, ensuring they have access to oxygen even in freezing conditions.

IMPORTANT: During winter, move the air stones to HALF your maximum pond depth to avoid ice formation and ensure proper aeration without overcooling the deeper water where fish may hibernate.



Image: A pond partially covered in snow and ice, with a clear, open water area maintained by the aerator to prevent complete freezing.

6. MAINTENANCE

Regular maintenance ensures the longevity and efficient operation of your AquaMiracle Pond Aerator.

- **Air Filter Replacement:** The pump is equipped with an air filter to ensure clean air intake. Check the air filter pads periodically (e.g., monthly) and replace them when they appear dirty or clogged. Two replacement air filter pads are included in the kit.
- **Air Stone Cleaning:** Over time, air stones may become clogged with algae or mineral deposits, reducing airflow. Remove and clean the air stones as needed by scrubbing them with a brush or soaking them in a mild acid solution (e.g., vinegar) to remove buildup. Rinse thoroughly before reinstallation.
- **Airline Inspection:** Periodically inspect the airline tubes for kinks, cracks, or blockages. Ensure they are free from debris that could restrict airflow.
- **Pump Housing Cleaning:** Wipe down the exterior of the pump housing with a damp cloth to remove dust and dirt. Do not use harsh chemicals or abrasive cleaners.

Function 1 - Oxygenate Your Pond

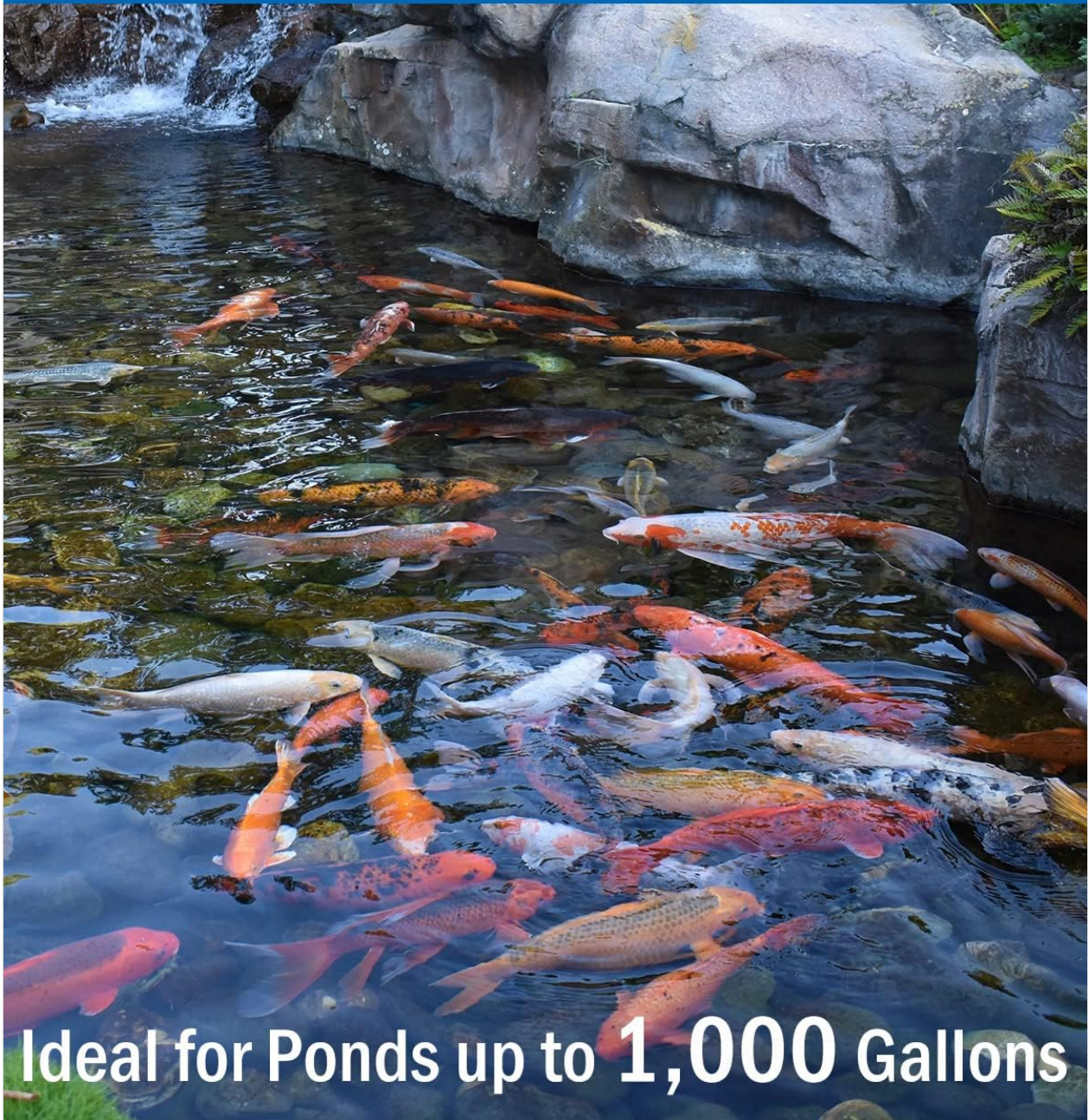


Image: An internal view of the AquaMiracle aerator pump, highlighting the motor protected with isolated tape and the durable sulfurized rubber diaphragm, indicating robust construction.

7. TROUBLESHOOTING

Problem	Possible Cause	Solution
No air output	No power; clogged air stones/lines; damaged pump diaphragm.	Check power connection and GFCI. Clean or replace air stones/lines. Inspect pump for damage.

Problem	Possible Cause	Solution
Low air output	Clogged air stones/lines; dirty air filter; air output dial set too low.	Clean air stones/lines. Replace air filter pads. Adjust air output dial.
Excessive noise	Vibration; internal component issue; pump not on a stable surface.	Ensure pump is on a flat, stable surface. Check for loose parts. If noise persists, contact support.
Water in airline/pump	Missing or improperly installed check valve; pump below water level.	Install or correctly orient check valve. Ensure pump is always above pond water level.

8. SPECIFICATIONS

Feature	Specification
Brand	AquaMiracle
Model Number	AP2400P
Product Dimensions	16.51 x 9.53 x 7.49 cm
Item Weight	1.15 Kilograms
Color	Grey
Material	Copper, Steel, Rubber, Plastic
Power Source	Corded Electric
Voltage	120 Volts
Wattage	4 Watts
Max Flow Rate	1.6 Gallons/Minute (0.21 CFM / 96 GPH)
Max Lift Height	2 Feet
Air Pressure	2.3 PSI (0.016 Mpa)
Recommended Pond Size	Up to 1000 Gallons
Included Accessories	Airline tubes, Air stones, Check valves

9. WARRANTY AND SUPPORT

For warranty information and customer support, please refer to the product packaging or contact AquaMiracle directly through their official website or the retailer from whom you purchased the product. Keep your purchase receipt as proof of purchase.

