

WOODBIDGE B1530

WOODBIDGE 59-Inch Acrylic Freestanding Bathtub Instruction Manual

Model: B1530-MB-Drain&O

INTRODUCTION

Thank you for choosing the WOODBRIDGE 59-inch Acrylic Freestanding Bathtub. This contemporary soaking tub, featuring a matte black overflow and drain, is designed to provide a luxurious and comfortable bathing experience. This manual provides essential information for the safe and proper installation, operation, and maintenance of your new bathtub. Please read all instructions thoroughly before beginning installation or use.

SAFETY INFORMATION

- Always ensure the bathtub is installed on a structurally sound and level floor capable of supporting its weight when filled with water and a bather.
- Installation should be performed by a certified plumber to ensure compliance with local plumbing and building codes.
- Avoid using abrasive cleaners or harsh chemicals on the tub surface, as this can damage the acrylic finish and potentially discolor components.
- Exercise caution when entering and exiting the tub, especially when wet. The non-slip bottom provides added safety, but care should always be taken.
- Do not overfill the bathtub. The overflow drain is designed to prevent flooding, but excessive water can still cause spills.

PACKAGE CONTENTS

Your WOODBRIDGE Freestanding Bathtub package includes the following items:

- 59-inch Acrylic Freestanding Bathtub
- Matte Black Drain and Overflow Cover
- Installation Manual for Bathtub and Drain Kit

Note: Additional plumbing components, such as a floor-mounted faucet, are sold separately and are not

included with the bathtub.

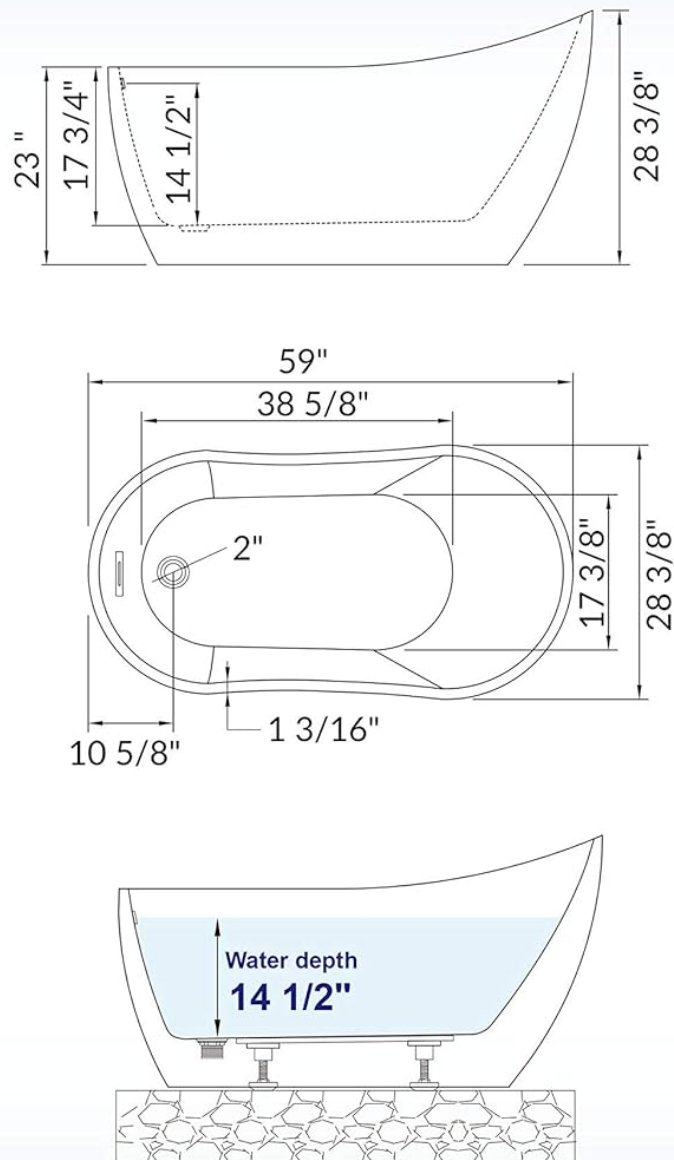
SPECIFICATIONS

Feature	Specification
Brand	WOODBIDGE
Model Number	B1530-MB-Drain&O
Exterior Dimensions (L x W x H)	59" x 28.37" x 28.37"
Material	100% High Gloss White LUCITE Acrylic, reinforced with ASHLAND resin & fiberglass
Color	White (Tub), Matte Black (Overflow & Drain)
Installation Type	Freestanding
Capacity	57 Gallons
Item Weight	73 Pounds
Special Features	Non-Slip Design, Double Walled Insulation, Stain-Resistant, Scratch-Resistant
Certifications	CSA B45.5-17/IAPMO Z124-2017, Massachusetts Plumbing & Gas Code

The bathtub features gently sloping lines that follow the natural curves of the body, providing exceptional comfort. Its double-walled reinforced design offers maximum insulation, keeping water at its desired temperature longer.

WOODBIDGE®

B1530/BTA1530



IMPORTANT INFORMATION

- Measurements are $\pm 1/2"$ and subject to change without notice
- Specifications & Configurations are subject to change without notice
- Please measure tub on-site before installation
- Please note that installer(s) must be certified or warranty will be voided
- Measurements herein supersede all others published prior to publication date shown below
- Before ordering or installing, please consider future access to equipment

www.woodbridgebath.com

Figure 1: Technical drawing showing the dimensions and water depth of the WOODBRIDGE B1530 bathtub.

SETUP AND INSTALLATION

Proper installation is crucial for the functionality and longevity of your freestanding bathtub. It is highly recommended that installation be performed by a professional plumber.

Pre-Installation Steps

1. **Inspect the Bathtub:** Before installation, carefully inspect the bathtub for any damage. Report any issues immediately.
2. **Prepare the Area:** Ensure the installation area is clean, level, and has adequate structural support. The floor drain should be properly positioned according to local codes.
3. **Read the Manual:** Thoroughly read the included installation and care guide.

Drain and Overflow Installation

The bathtub comes with a pre-installed drain and overflow system. The overflow trim piece needs to be secured.

- Apply clear silicone caulking to the tub overflow trim piece.
- Hold the overflow in place, ensuring it is inserted flat and appears level from all angles.
- Apply blue painter's tape to hold the overflow in place until the silicone cures (approximately 24 hours).
- For the main drain, fill the grooved gasket with silicone and install it with the groove and silicone facing up.
- Tighten the drain nut in place. Be careful not to overtighten; it only needs to be snug.



Figure 2: Detail of the non-slip bottom and matte black drain and overflow.

Leveling the Bathtub

The bathtub is equipped with adjustable legs for leveling.

- Place the bathtub in its desired location.
- Use a 24-inch level to adjust the legs. Leave a 1/8-inch to 1/4-inch gap between the rim of the tub and the level.
- Tighten the nuts on the legs to secure them in place.

Connecting to Floor Drain

The bathtub's integrated sealed overflow and drain system is designed for leak-proof installation. You will need to attach a flanged tail piece (provided by the installer) to the tub drain and tighten it securely. This connects to your existing floor drain.

Leak Testing

After connecting the drain, perform a leak test:

- Push the pop-up drain into a closed position.
- Fill the bathtub with cold water above the overflow level.
- Check for any leaks around the drain and pipe connections.

Final Placement

Once leak testing is complete and no leaks are detected:

- Mark the final location of the tub with an erasable pencil.
- Apply silicone caulking to the base rim of the tub.
- Carefully lower the tub into its final position, aligning it with the marked outline.

Installation Video Guide

Video 1: Official WOODBRIDGE Bathtub Installation Guide. This video demonstrates the steps for installing the freestanding bathtub, including drain and overflow setup, leveling, and leak testing for both underfloor and slab floor access.

OPERATING INSTRUCTIONS

Your WOODBRIDGE freestanding bathtub is designed for a comfortable soaking experience. To use:

1. Ensure the drain pop-up is in the closed position.
2. Fill the tub with water to your desired level. The deep design allows for a high soaking level.
3. The non-slip bottom provides a secure surface. The gently sloping lines offer ergonomic comfort for relaxation.
4. After use, open the drain pop-up to empty the tub.



Figure 3: The WOODBRIDGE freestanding bathtub in a contemporary bathroom.



Figure 4: The bathtub filled with water, highlighting its depth and the matte black drain and overflow.

MAINTENANCE & CLEANING

The WOODBRIDGE bathtub is made from premium LUCITE acrylic, offering an EnduraClean surface that is easy to clean, easy to maintain, stain-resistant, and scratch-resistant. To keep your tub looking new:

- **Regular Cleaning:** After each use, rinse the tub thoroughly with warm water to remove soap residue and prevent buildup.
- **Mild Cleaners:** Use only mild, non-abrasive liquid cleaners and a soft cloth or sponge. Avoid harsh chemicals, abrasive pads, or caustic cleaners, as these can damage the finish and cause discoloration.
- **Stain Removal:** For stubborn stains, a diluted solution of white vinegar and water can be used. Rinse thoroughly after cleaning.
- **Avoid Scratches:** Do not use sharp objects or tools that could scratch the acrylic surface.

TROUBLESHOOTING

If you encounter any issues with your WOODBRIDGE bathtub, please refer to the following common solutions:

Problem	Possible Cause	Solution
Water leakage around drain or overflow	Loose connections or insufficient sealant	Check all drain and overflow connections. Ensure gaskets are properly seated and apply additional silicone sealant if necessary. Retighten nuts snugly.
Bathtub is not level	Adjustable legs are not properly set	Use a level to re-adjust the bathtub's feet until the rim is level. Tighten the leg nuts securely.
Stains or discoloration on surface	Use of harsh cleaners or prolonged exposure to certain substances	Clean with mild, non-abrasive cleaners. For persistent stains, consult the care guide or contact customer support for recommended solutions. Avoid caustic cleaners.

WARRANTY & SUPPORT

WOODBIDGE warrants a **1-Year limited warranty** to be free of defects in material and workmanship. This warranty covers manufacturing defects under normal use and service.

Our US-based product support team is available to assist with any sales or product-oriented queries, including installation help or replacement parts. For support, please refer to the contact information provided in your product documentation or visit the official WOODBRIDGE website.

IMPORTANT NOTES

- The bathtub's non-slip design meets ASTM standards for slip resistance, enhancing user safety.
- The durable acrylic construction, reinforced with fiberglass, provides long-lasting performance. The stainless steel bracket at the bottom ensures a bearing capacity of up to 1000 LBS.
- The double-walled design offers maximum insulation, helping to keep your bath water warm for extended periods.