

Manuals.plus /

› A-MIND /

› A-MIND Samsung Galaxy A12 Nacho Screen Replacement Kit Instruction Manual

A-MIND A127

A-MIND Samsung Galaxy A12 Nacho Screen Replacement Kit Instruction Manual

Model: A127

1. PRODUCT OVERVIEW

This instruction manual provides detailed guidance for the installation and use of the A-MIND LCD Display Touch Digitizer with Frame Assembly Kit for the Samsung Galaxy A12 Nacho (models SM-A127F/DSN, SM-A127F/DS, SM-A127F, SM-A127M, SM-A127U). This kit is designed to replace faulty, cracked, broken, or non-functional screens, addressing issues such as dead pixels, touch unresponsiveness, display problems, and incorrect colors.



Image 1.1: A-MIND Samsung Galaxy A12 Nacho Screen Replacement Kit, showing the LCD panel and the frame assembly. The screen features 720x1600 pixels and is 6.5 inches in size.

2. COMPATIBILITY

This screen replacement kit is compatible with the following Samsung Galaxy A12 Nacho models:

- Samsung Galaxy A127 Nacho
- SM-A127F/DSN
- SM-A127F/DS
- SM-A127F
- SM-A127M
- SM-A127U

The screen size is 6.5 inches with a resolution of 720x1600 pixels. Please verify your device's model number before purchasing and installation to ensure compatibility.

3. PACKAGE CONTENTS

The A-MIND screen replacement kit includes the following items:

- 1x Black with Frame For Samsung A127F Display LCD Touch Screen Replacement
- 1x Strong Suction Cup
- 1x Triangle Opening Tools (Set of Special Removal Tools)
- 1x Card Pin (SIM Ejector Tool)
- 1x Plastic Spudger
- 1x Free Tape (Double-sided Adhesive Tape)
- Screwdrivers (various types)
- Dust-Absorber and GUIDS Sticker

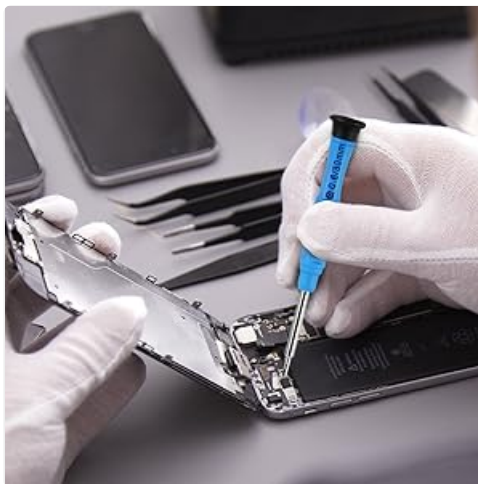


Image 3.1: The repair tools included in the kit, such as screwdrivers, prying tools, and a suction cup, designed to assist with the screen replacement process.

4. SAFETY PRECAUTIONS

Before beginning the installation, please observe the following safety precautions:

- **Power Off Device:** Ensure your phone is completely powered off before starting any repair.
- **Static Discharge:** Take precautions against static electricity. Consider using an anti-static wrist strap.
- **Handle with Care:** The screen and flex cables are delicate. Handle them gently to avoid damage.
- **Avoid Excessive Force:** Do not apply excessive force to the screen corners or flex cables during installation, as this can cause permanent damage.
- **Battery Disconnection:** Always disconnect the battery connector before removing or installing any components.

- **Organize Screws:** Keep track of all screws and their original locations, as they may vary in size and length.

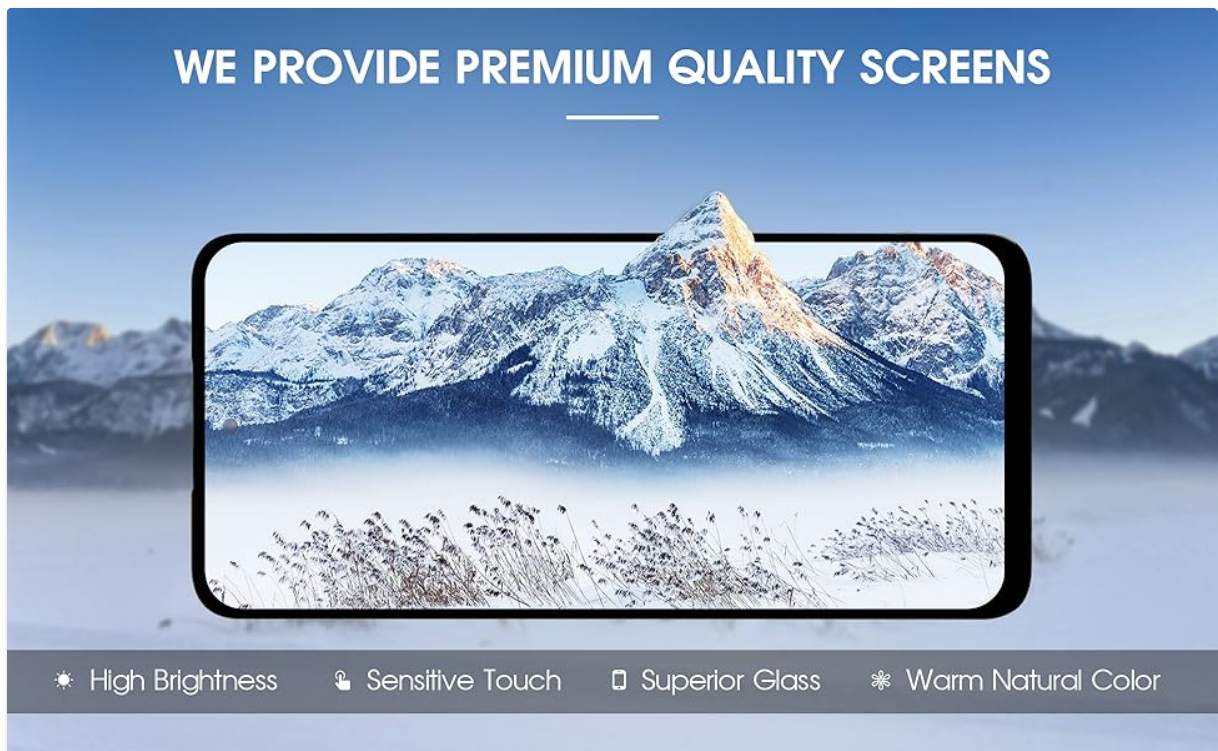


Image 4.1: Illustration of common screen problems such as display issues, wrong colors, dust spots, and broken screens, which this replacement kit aims to resolve.

5. INSTALLATION GUIDE

Follow these steps carefully for a successful screen replacement. It is recommended to watch a detailed video tutorial for your specific phone model before starting.

5.1 Preparation

1. **Power Off:** Completely power off your Samsung Galaxy A12 Nacho.
2. **SIM Tray Removal:** Use the provided card pin to eject the SIM card tray.
3. **Heat the Edges:** Gently heat the edges of the phone's back cover using a heat gun or hairdryer to soften the adhesive.

5.2 Disassembly

4. **Pry Open Back Cover:** Use the suction cup and plastic spudger/triangle opening tools to carefully pry open the back cover. Work slowly around the edges.
5. **Remove Screws:** Unscrew all visible screws securing the mid-frame and any protective shields. Keep them organized.
6. **Disconnect Battery:** Carefully disconnect the battery flex cable from the motherboard. This is crucial to prevent short circuits.
7. **Disconnect Old Screen:** Locate and disconnect the flex cables connecting the old screen to the motherboard.
8. **Remove Old Screen:** Gently remove the old screen assembly from the frame. If it's an LCD with frame, you'll be replacing the entire front assembly.

FOR SAMSUNG A12 Nacho

720*1600 Pixels / 6.5 inches/270 ppi



Image 5.1: The new LCD screen with its integrated frame, ready for installation. This design simplifies the replacement process compared to frameless screens.

【LCD With Frame】 With frame screen is an LCD screen with a touch screen and an LCD frame assembly, which is more framed than a frameless screen. Buying a framed screen is better than buying a frameless screen, and it is more convenient to install with a frame.

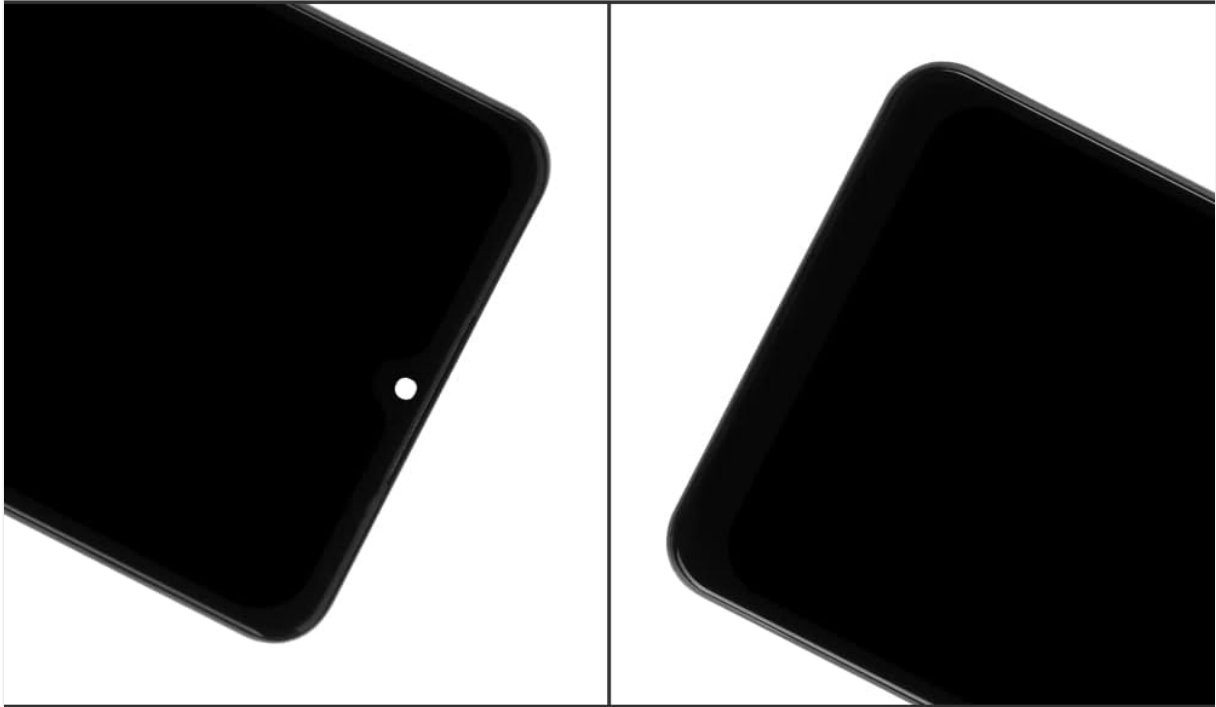


Image 5.2: Close-up view of the flex cable connections on the screen assembly, highlighting the points where it connects to the phone's motherboard.

5.3 Installation of New Screen

9. **Clean Frame:** Clean any old adhesive residue from the phone's frame.
10. **Test New Screen (Pre-installation):** Before fully installing, connect the new screen's flex cables to the motherboard. Reconnect the battery and power on the phone to test the display and touch functionality. **Do not apply adhesive or fully install the screen before testing.**
11. **Power Off and Disconnect:** If the test is successful, power off the phone and disconnect the battery and screen flex cables again.
12. **Apply Adhesive:** Apply new adhesive (if not pre-applied on the new frame) around the edges of the phone's frame where the screen will sit.
13. **Install New Screen:** Carefully place the new screen assembly into the phone's frame, ensuring proper alignment.
14. **Connect Flex Cables:** Reconnect the screen's flex cables to the motherboard.
15. **Reconnect Battery:** Reconnect the battery flex cable.
16. **Reassemble:** Replace any protective shields and screws. Reattach the back cover, ensuring it snaps securely into place.
17. **Insert SIM Tray:** Reinsert the SIM card tray.

100% Tested
one by one before shipping

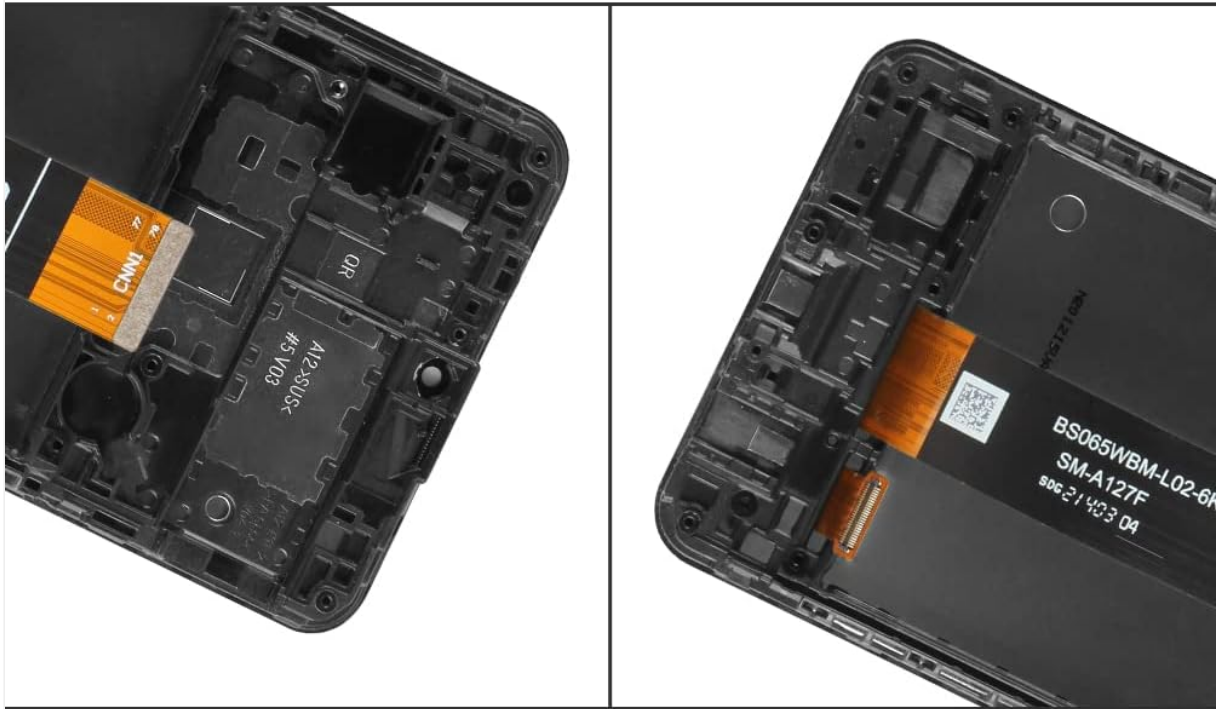


Details

Image 5.3: Close-up of a screen corner, indicating that each unit is 100% tested for quality before shipment to ensure no dead pixels or defects.

100% Tested

one by one before shipping



Details of flex cable

Image 5.4: Detail of the screen's flex cable, which is also 100% tested to ensure proper functionality and connectivity.

5.4 Important Installation Notes

- **Screen Corners:** To prevent damage, avoid applying excessive force to the screen corners during installation.
- **Flex Cables:** Be extremely careful with the flex cables. Bending or tearing them can cause display or touch issues.

Your browser does not support the video tag.

Video 5.1: A detailed video guide demonstrating the screen replacement process for the Samsung Galaxy A12 Nacho SM-A127F. This video provides visual instructions for each step of the installation.

Your browser does not support the video tag.

Video 5.2: A showcase video of the Samsung Galaxy A12 Nacho LCD Frame, providing a closer look at the product's components and build quality.

6. TESTING THE NEW SCREEN

After installation, perform the following tests to ensure full functionality:

- **Display Test:** Power on the phone and check for any dead pixels, discoloration, or display abnormalities.
- **Touch Functionality:** Test the touch response across the entire screen. Drag an app icon around the screen to ensure all areas respond correctly.
- **Brightness Adjustment:** Verify that screen brightness can be adjusted.
- **Camera Test:** Check if the front camera functions correctly (if applicable and related to screen assembly).

7. TROUBLESHOOTING

If you encounter any issues after installation, consider the following:

- **Screen Not Turning On:**
 - Ensure the battery is charged.
 - Check all flex cable connections to the motherboard and screen. Disconnect and reconnect them firmly.
 - Verify the battery connector is securely attached.
- **Touch Not Responding:**
 - Ensure the touch digitizer flex cable is properly connected.
 - Check for any debris or damage to the flex cable.
 - Perform a hard reset of the device.
- **Display Issues (Lines, Flickering, Discoloration):**
 - Recheck the display flex cable connection.
 - Inspect the flex cable for any bends or tears.
 - Ensure no pressure is being applied to the screen from inside the phone.
- **Speaker Rattle (as mentioned in a review):**
 - This may indicate a loose speaker component or insufficient insulation. Re-open the phone and ensure all speaker components are properly seated and secured.

If problems persist, please contact customer support for assistance.

8. SPECIFICATIONS

Feature	Detail
Model Compatibility	Samsung Galaxy A12 Nacho (A127, SM-A127F/DSN, SM-A127F/DS, SM-A127F, SM-A127M, SM-A127U)
Screen Size	6.5 inches
Resolution	720x1600 Pixels
Color	Black
Item Weight	5.9 ounces
Package Dimensions	7.6 x 4.06 x 1.3 inches
Manufacturer	A-MIND

9. WARRANTY AND SUPPORT

A-MIND provides a **3-month warranty** for this product. All products undergo strict QC testing to ensure they are in good condition before shipment, free from scratches, dead areas, dot pixels, or lines.

If you encounter any problems with your order or the product, please contact our customer service team. We are committed to providing assistance within 24 hours. For quality-related issues, as long as the screen has no man-made or physical damage, we can arrange an exchange if it does not function normally.

For support, please refer to the contact information provided with your purchase or on the manufacturer's official

website.