

[manuals.plus](#) /

› [Phomemo](#) /

› [Phomemo M08F Portable Thermal Printer User Manual](#)

Phomemo Phomemo-M08F

Phomemo M08F Portable Thermal Printer User Manual

Model: Phomemo-M08F | Brand: Phomemo

1. INTRODUCTION AND OVERVIEW

The Phomemo M08F is a compact and lightweight portable thermal printer designed for on-the-go printing. Weighing only 1.5 lbs, it is ideal for travel, business, office, and home use. This inkless printer utilizes thermal technology, eliminating the need for ink cartridges, toner, or ribbons, offering a clean and cost-effective printing solution. It supports 8.5"x11" US Letter size thermal paper and provides high-quality, crisp black and white prints.



Image: The Phomemo M08F printer, showcasing its compact design and connectivity with a smartphone.

Key features include:

- **Compact and Portable:** Weighs 1.5 lbs, easily fits in bags for travel.
- **Inkless Printing:** Uses thermal technology, no ink, toner, or ribbons required.
- **High Quality Printing:** Delivers crisp, dark imaging and smooth printing effects (black and white only).
- **Strong Compatibility:** Connects via Bluetooth to iOS and Android devices, and via USB to PC (Windows, macOS, Chrome OS, Linux).
- **Long Battery Life:** Built-in rechargeable battery supports printing up to 140 sheets per charge.

2. SETUP

2.1. Initial Charging

Before first use, fully charge the printer using the provided USB-A to USB-C charging cable. Connect the USB-C end to the printer and the USB-A end to a 5V 2A power adapter (not included) or a compatible USB port. A full charge can print approximately 140 sheets.

2.2. Connecting via Bluetooth (for iOS/Android)

1. **Power On:** Press and hold the power button on the printer until the indicator light turns on.
2. **Download App:** Download the "Phomemo" app from the Google Play Store (for Android) or Apple App Store (for iOS).
3. **Enable Bluetooth:** Ensure Bluetooth is enabled on your mobile device.
4. **Connect in App:** Open the Phomemo app, then click to add a device. Select "M08F" from the list. The printer should connect automatically within a few seconds.
5. **Troubleshooting Connection:** If pairing takes too long, reboot the printer by holding the power button down, then turn it back on and try pairing again within the app.

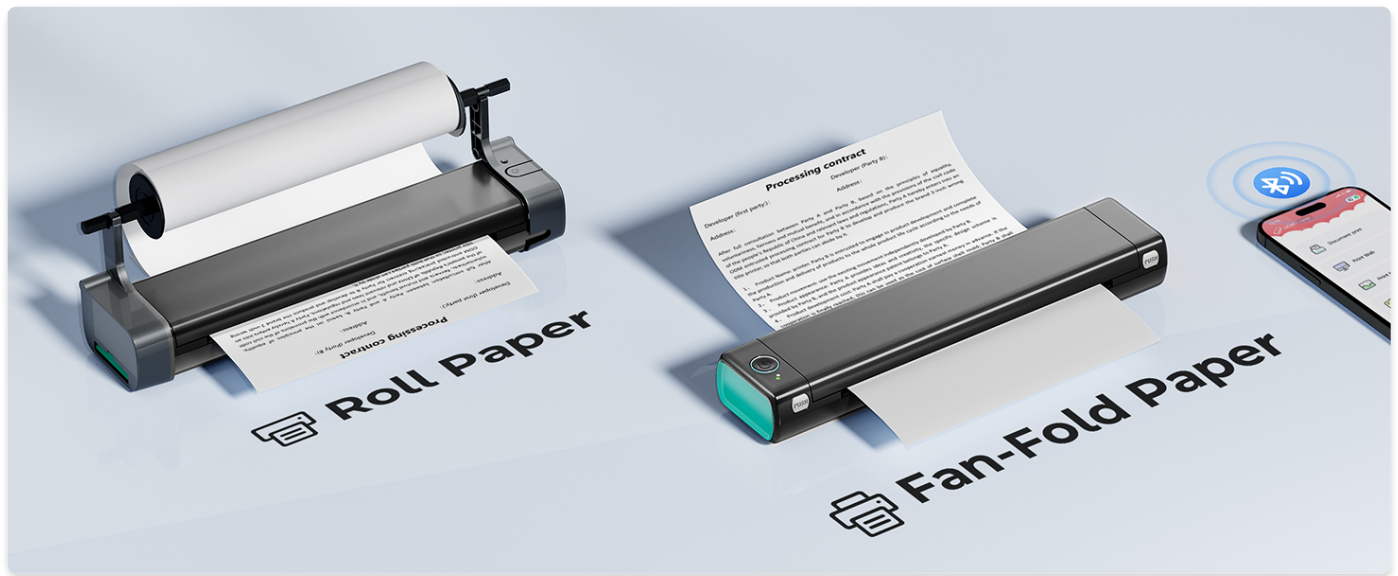


Image: Visual representation of the Phomemo M08F printer's Bluetooth connectivity with a mobile device.

2.3. Connecting via USB Cable (for PC)

1. **Power On:** Press and hold the power button on the printer until the indicator light turns on.
2. **Download Driver:** For PC devices (Windows, macOS, Chrome OS, Linux), you must first download and install the appropriate driver from the official Phomemo website: m08f.phomemo.com.
3. **Connect Cable:** Connect the printer to your computer using the provided USB-A to USB-C cable.
4. **Select Printer:** Once the driver is installed and the printer is connected, it will appear as an available printer in your computer's print dialog.

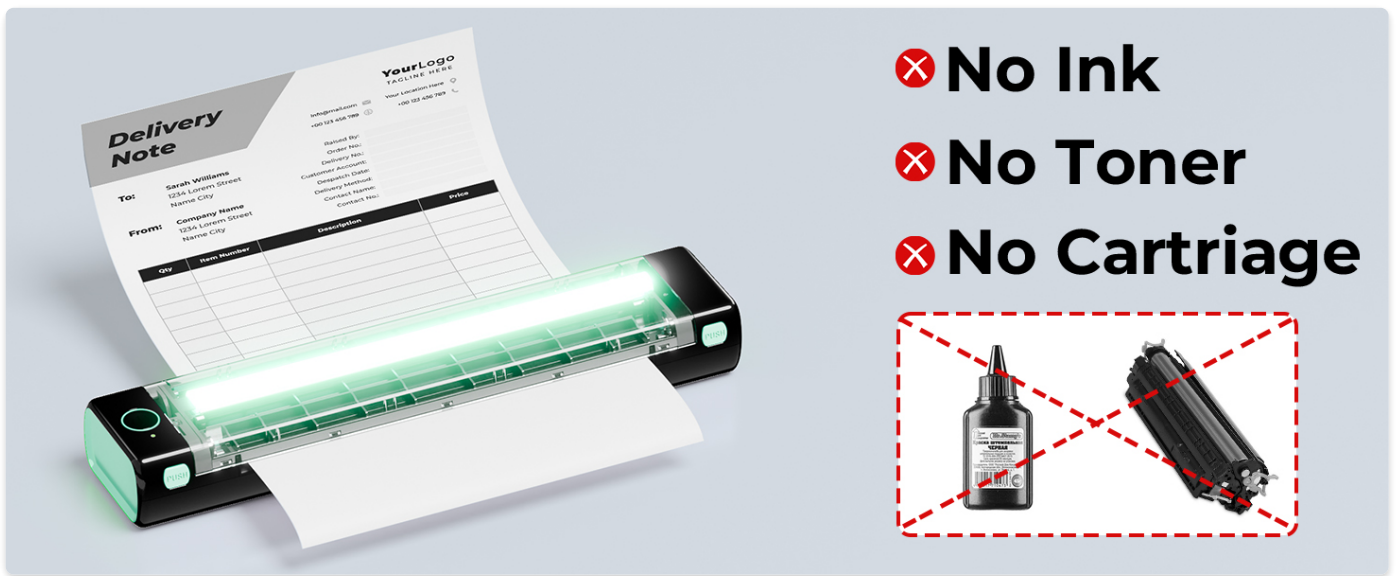


Image: The Phomemo M08F printer connected to a laptop, illustrating USB connectivity for PC printing.

3. OPERATING INSTRUCTIONS

3.1. Loading Thermal Paper

The Phomemo M08F printer requires special thermal paper (8.5"x11" US Letter size) for operation. It does not support regular copy paper. Ensure the thermal paper is inserted with the correct side facing up (usually indicated on the paper itself or by a slightly glossy feel on the print side).

- Gently insert a single sheet of thermal paper into the printer's paper slot until it is gripped by the rollers.
- Ensure the paper is aligned straight to prevent skewed prints or paper jams.



Image: A close-up of the Phomemo M08F printer showing thermal paper being loaded into the device.

3.2. Printing Documents

The printer supports black and white printing only. Color graphics will be converted to grayscale.

- **From Mobile App:** Within the Phomemo app, you can print various document types including PDF, Word, images, and web pages. Select the desired document or image, adjust settings if necessary, and initiate printing.
- **From PC:** After connecting via USB and installing the driver, you can print from any application on your computer by

selecting the Phomemo M08F as your printer.



Image: The Phomemo M08F printer in action, highlighting its inkless thermal printing capability.

4. MAINTENANCE

To ensure optimal performance and longevity of your Phomemo M08F printer, regular maintenance is recommended:

- **Cleaning the Thermal Head and Rollers:** Periodically open the printer's cover (using the hinge opening buttons) and gently

wipe the thermal print head and paper rollers with a soft, lint-free cloth. For stubborn residue, a small amount of isopropyl alcohol on the cloth can be used, ensuring the printer is off and completely dry before use.

- **Storage:** Store the printer in a cool, dry place away from direct sunlight and extreme temperatures.
- **Thermal Paper Care:** Thermal prints are sensitive to heat, light, and certain chemicals. For best longevity, store printed documents in a dry, dark place at room temperature. The Quick Guide states 7-10 year print viability if kept dry, at room temperature, and out of sunlight.

5. TROUBLESHOOTING

If you encounter issues with your Phomemo M08F printer, please refer to the following common solutions or consult the official troubleshooting guide.

Problem	Possible Solution
Printer not connecting via Bluetooth	Ensure Bluetooth is enabled on your device. Reboot the printer and try pairing again through the Phomemo app. Make sure you are connecting via the app, not directly through your device's Bluetooth settings.
Printer not recognized by PC via USB	Verify that the correct driver is installed from m08f.phomemo.com . Ensure the USB cable is securely connected and the printer is powered on.
Poor print quality or blank pages	Ensure you are using genuine Phomemo thermal paper and it is inserted with the correct side facing up. Check for any debris on the thermal print head and clean if necessary. The printer only supports black and white printing.
Paper misalignment or jams	Ensure paper is inserted straight and swiftly until it is gripped by the rollers. Avoid forcing paper. If a jam occurs, open the printer cover to carefully remove the paper.
Battery not charging	Use the provided USB-C cable and a 5V 2A power adapter. Some fast chargers may not be compatible.

For more detailed troubleshooting, please refer to the official [Troubleshooting Guide \(PDF\)](#).

6. SPECIFICATIONS

Feature	Detail
Model Number	Phomemo-M08F
Printing Technology	Thermal
Printer Output	Monochrome (Black and White)
Max Print Speed	2 ppm (pages per minute)
Max Copy Resolution	203 dpi
Printer Media Size Maximum	8.5 x 11 inch (US Letter)
Connectivity Technology	Bluetooth, USB Type C

Feature	Detail
Compatible Devices	Smartphones (iOS, Android), PC (Windows, macOS, Chrome OS, Linux), Tablets, Laptops
Battery	1 Lithium Metal battery (included)
Max Input Sheet Capacity	140 sheets (per full charge)
Item Weight	1.58 pounds (715 Grams)
Product Dimensions	4 x 13.7 x 3 inches

7. WARRANTY AND SUPPORT

The Phomemo M08F Portable Thermal Printer comes with a limited warranty. For specific warranty terms and conditions, please refer to the documentation included with your product or contact Phomemo customer support.

Additional resources:

- [User Guide \(PDF\)](#)
- [Installation Manual \(PDF\)](#)
- [Troubleshooting Guide \(PDF\)](#)

For further assistance, please visit the official Phomemo website or contact their customer service.


8. OFFICIAL PRODUCT VIDEOS

No official product videos from the seller were available for embedding at this time.



© 2024 Phomemo. All rights reserved.

Related Documents - Phomemo-M08F

	<p>Phomemo Printer Setup Guide</p> <p>A step-by-step guide to setting up your Phomemo printer, including turning it on, downloading the Phomemo app, and connecting via Bluetooth.</p>
---	--

M08F Imprimante portable



Implimate ¹⁾	Conditio ²⁾	Descriptio ³⁾	Manus

Nom	État	Description de la fonction
Vapeurs d'alimentation	Faible allumé	Fus de papier / capot ouvert / haute température
	Faible éteint	Nettoyé facile
	Fort allumé	Fus normal
	Fort éteint	Chargement en cours avec l'appareil allumé
	Fort éteint	Chargement en cours lorsque l'appareil est éteint

Fonction du bouton (marque/icône)	Opération
Allumer / éteindre	Appuyez sur le bouton et maintenez-le enfoncé pendant environ 3 secondes jusqu'à ce que le signal de démarrage d'allumage s'allume.
Imprimer le QR Code	Pouvez cliquer sur le bouton pour imprimer le QR Code, scanner le QR Code par l'application mobile pour connecter l'imprimante.
Éteindre l'imprimante	Appuyez sur le bouton et maintenez-le enfoncé pendant environ 3 secondes.

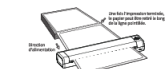
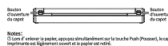
[illegible]

- 6.1 Installation de l'application
 Télécharger l'application
 Recherchez « Phonema » sur le marché des applications mobiles pour télécharger l'application.
- 6.2 Installation et chargement des consommables
 (a) Interactions d'installation des consommables
 Tenir le capteur à plat sur une surface molle et presser légèrement le capteur dans la position d'attente. Une fois que le capteur a été placé sur la surface molle, le signal de la puce de la puce est enregistré. Une fois que le capteur a été placé sur la surface molle, le signal de la puce de la puce est enregistré.

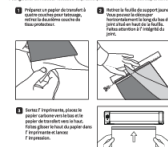


Conseils :

- ① Le bord court du papier doit être parallèle au plateau d'alimentation.
- ② Le papier a un sens (cel du papier est dit *à sens imprimé*, c'est-à-dire le papier : la phrase « le sens du papier » est dit *à sens imprimé* ou *à sens écrit*).
- ③ L'impression est dite *à sens imprimé* ou *à sens écrit*.
- ④ Méthode de chargement des conservables.
- ⑤ Dans l'application, vous pouvez observer le papier à l'aide d'un miroir.
- ⑥ Selon la méthode d'installation des conservables (à l'aide d'un miroir, à l'aide d'un miroir).



For greater in-depth insight, visit our office at www.fox.com.



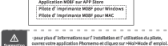
Méthode 1 :
Ouvrez l'application mobile Bluetooth, cliquez sur l'icône ajout à droite de l'interface principale de l'application Phoenix, entrez le page de connexion de l'appareil à synchroniser et/ou pour le connecter.

Remarque :
le système Android doit activer le positionnement et permettre à l'application d'utiliser les permissions appropriées.

Méthode 2 :
Directement sur le lecteur machine/le/d de l'imprimante pour imprimer le QR Code, cliquez l'application Phoenix, cliquez sur l'icône ajout à droite de la même page de l'application mobile, entrez le numéro de l'imprimante et les équipements, cliquez sur Scan-Connect, appuyez le QR Code pour connecter l'imprimante.



Obtenez la dernière version du pilote qui se trouve sur le site officiel. Téléchargez

[illegible]

	<input type="checkbox"/> Retour	<input type="checkbox"/> Changement	<input type="checkbox"/> Réparation
Client	nom : adresse :	nom :	date :
Infos du produit	date d'achat : N° de commande : lot :		
Détails Changement Réparation	causes :		
notes de réparation	parcours : réparations : N° de facture de décaissement :	réparateur : date :	

A quick start guide for the Phomemo M08F portable thermal printer, covering setup, operation, app installation, and troubleshooting.

A concise guide to setting up and using the Phomemo M08F portable printer for printing from computers (Windows, Mac, Linux) via USB and from smartphones via Bluetooth, including setup instructions and regulatory information.



	<input type="checkbox"/> Return	<input type="checkbox"/> Exchange	<input type="checkbox"/> Repair
User Info	Name	Gender	Phone
	Address		
	Purchase date		
Product Info	Product order number		
	Product Serial Number		
Measurements of return	Reason description		
Replacement request			
	Take us conditions		Maintenance person
Monitoring records	Handling situation		Delivery date

Quick Start Guide
M08F Phonememo A4
Portable Printer



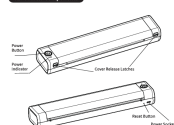
Before using, please read this manual carefully and

English

01. Package Contents



02. Printer Components



Name	Status	Description
Power Indicator	Lit (Red)	Out of paper/ Cover is open/ Overheat
	Blinking (Red)	Low power
	Lit (Green)	Normal
	Blinking (Green)	Charging

Button Function	
(Power) Button Function	Operation
Turn on the printer	Press and hold the button for around 2 seconds until the power indicator light turns on.
Print QR code	Enable press the button to print-QR code. You can scan the QR code using the App on the phone and connect to the printer.
Turn off the printer	Press and hold the button for around 2 seconds until the power indicator light turns off.

03. Precautions

- ① Please use 5V/1A input for charging, and it is recommended to use mobile phone power adapter for charging.
- ② Please connect the USB cable to the power adapter before charging. Please gently insert or unplug the charging cable when charging, to prevent excessive force from damaging the port.
- ③ After the charging is completed, please unplug the charging cable in time.
- ④ In order to avoid danger, do not use or charge in the environment of high temperature, high humidity, heavy smog/dust, such as in a bathroom, open window, near to open flame, etc.
- ⑤ Improper charging may cause damage to the print head.
- ⑥ Do not touch the print head to prevent scalding caused by overheating.
- ⑦ The heating blade is sharp, please be careful to avoid touching it by mistake.

Battery warning is on

* If it is forbidden to disassemble, hit, squeeze the battery, or throw it into fire,
 * If severe swelling occurs, please do not use it;
 * Do not place it in a high temperature environment, and it is strictly prohibited to use the battery
 after it is placed in water;
 * There is a danger of explosion if the battery is replaced by the wrong type. Be sure to dispose
 of used battery according to the instructions;
 * If customer's use a power adapter for power supply, they should purchase a power adapter
 that meets the requirements of corresponding safety standards or a power adapter with CCC
 certification.

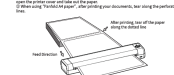
04. Instruction Guide

4.1 Install App
Download the App
Please search for "Phonemio" on your phone's App market and download the App.

4.2 Install and change the interior's consumable



Note:
 Ⓢ When you need to take out the printing paper, press the P/B buttons simultaneously.



4.3 Connect the printer to the App
Method 1:
Turn on your phone's Bluetooth and open your Phormo app. Press the button at the top right of your Phormo App home page and select MRP from the list.
Image:
Android system needs to enable positioning and allow app to obtain relevant permissions.
Method 2:



05. How to Download and Install Driver

Method 2:
Use the USB pendrive included in the package to obtain the latest driver. Download the relevant driver according to the your operating system version and follow the beginning to install the driver.



Method 2: Download the latest driver from the official website. Download the driver driver according to the your operating system version and follow the instruction to install the driver.
Official website: Matsushita.com.au/

pegiu/download-center-m00f

05. Official Printing Paper Type

Normal thermal paper: Does not contain Bisphenol-A. The printed tests can last for 7 to 30 years if stored in a dry condition at room temperature without direct sunlight.
 Writable Quick-drying thermal paper: Thermal paper that does not contain Bisphenol-A, can be written on, and dries quickly. The printed tests can last up to 35 years if stored in a dry condition at room temperature without direct sunlight.

07. After-sales Service

6.1 Warranty description

6.2 After-sales Information
Online Contact Information
Distributor: 188 13518166

Service Area: Mon-Fri 1444-1211 (UTC) for reservations & cancellations

Email adhesivesupport@3m.com
 Office Website www.3m.com
 ©2006 3M. Please search for

03 - FCC Warning

This device complies with conditions (i) This device

Any changes or modifications not expressly approved by the party responsible for compliance could void the user's authority to operate the equipment.

This equipment has been tested and found to comply with the limits for a Class B digital device, pursuant to part 15 of the FCC Rules. These limits are designed to provide reasonable protection against harmful interference when this equipment is operated in a normal manner. It is understood that the correct use of this equipment is required. The use of this equipment with power generation units and/or data transfer systems may cause harmful interference to radio communications. However, there is no guarantee that interference will not occur in a particular installation. If interference does occur, the user is advised to take the following steps: interference reception, which can be determined by turning the equipment off and on, the user is encouraged to try to correct the interference by one or more of the following measures:

- Reorient or relocate the receiving antenna.
- Increase the separation between the equipment and the receiver.
- Connect the equipment into an outlet on a circuit different from that to which the receiver is connected.
- Consult the dealer or an experienced radio/TV technician for help.

The device has been evaluated to meet general RF exposure requirements. The device can be used in portable exposure condition per FCC guidelines.

09. Warranty Card

<input type="checkbox"/> Return <input type="checkbox"/> Exchange <input type="checkbox"/> Repair			
User info	Name:	Gender:	Phone:
Product info	Address		
	Purchase date:		
	Product order number:		
Requirements of return (exchange/repair)	Product Serial Number:		
	Reason description:		
Maintenance records	Value condition:		Maintenance person:
	Handling situation:		Delivery date:

Phomemo M08F Portable Printer Quick Start Guide

A quick start guide for the Phomemo M08F portable printer, covering package contents, printer components, usage precautions, installation of the app and consumables, connection methods, driver installation, paper types, after-sales service, and FCC warnings.

<div><div>M08F Printer Troubleshooting Guide</div><div>Contents</div><div><div>M08F Printer Troubleshooting Guide.....1</div><div>Power Indicator.....2</div><div>Bluetooth Connectivity Issues.....3</div><div>1. Unable to Pair Bluetooth.....3</div><div>2. Battery Life Issues.....3</div><div>Printing Issues.....4</div><div>1. Poor Print Quality.....4</div><div>2. The Print Image is Blurred.....4</div><div>3. The Print Image is Too Dark.....5</div><div>Charging Problems.....6</div><div>Other Settings.....6</div></div></div>	<div><div>M08F Printer Troubleshooting Guide</div><div>Comprehensive troubleshooting guide for the Phomemo M08F portable thermal printer, covering common issues like power indicators, Bluetooth connectivity, print quality problems (blank, unclear, dark images), charging, and other settings to ensure optimal performance.</div></div>