

## HumanCentric 101-1064

# HumanCentric VESA Mount Adapter Instruction Manual

For HP M-Series and 5-Series Monitors

## 1. INTRODUCTION

This manual provides comprehensive instructions for the installation and proper use of your HumanCentric VESA Mount Adapter. This adapter is designed to enable VESA mounting compatibility for specific HP M-Series and 5-Series monitors, allowing them to be attached to standard VESA arms, stands, or desk mounts.

## 2. MONITOR COMPATIBILITY

This VESA mount adapter is specifically designed for the following HP monitor models:

- **M-Series:** M22f, M24f, M24fd, M24fw, M24fwa, M27f, M27fd, M27fq, M27fw, M27fwa, M32f
- **5-Series:** 524sa, 524sw, 524sf, 527sa, 527sw, 527sf, 532sf

### Important Note:

- This adapter is **only compatible** with the models listed above. It will not fit other HP monitors.
- This adapter is **not compatible** with HP All-in-One computers.

# COMPATIBILITY

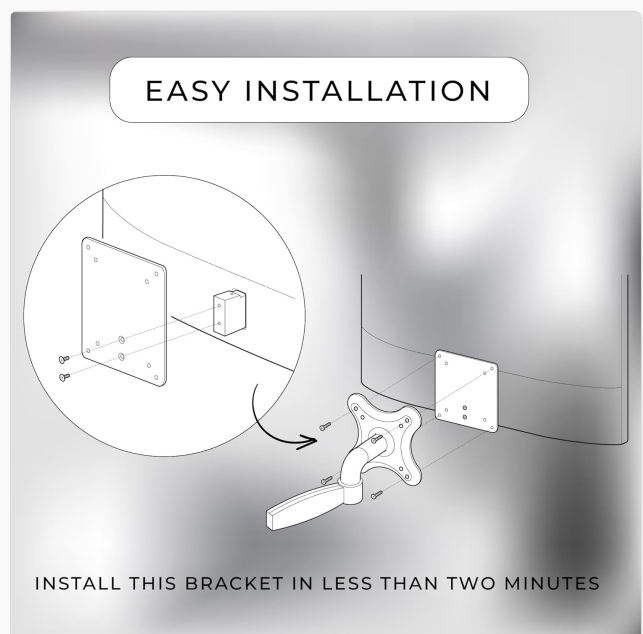
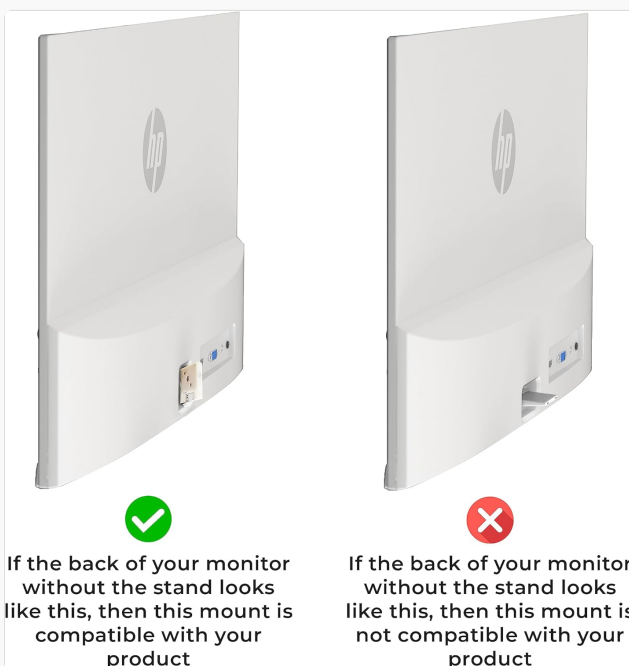


It is only

HP monitor M-Series model numbers:  
M22f, M24f, M24fd, M24fw, M24fwa, M27f,  
M27fd, M27fq, M27fw, M27fwa, and M32f.

\*It is only compatible with these models and will not fit other HP monitors.

Figure 2.1: Compatible HP monitor with VESA adapter installed.



### 3. PACKAGE CONTENTS

Please verify that all components are present before beginning installation:

- HumanCentric VESA Mount Adapter (Model 101-1064)
- Mounting Hardware (screws, washers)



Figure 3.1: HumanCentric VESA Mount Adapter.

## 4. SETUP AND INSTALLATION

---

Installation of the VESA mount adapter is quick and requires only a screwdriver. Please follow these steps carefully:

### 4.1. Remove the Original Monitor Stand

1. Lay your HP monitor face down on a soft, clean surface to prevent scratches.
2. Locate the stand attachment point at the back of the monitor. There is typically a release button or latch.
3. Press the release button/latch and carefully slide the original monitor stand out of its slot.

### 4.2. Install the VESA Mount Adapter

1. Align the HumanCentric VESA Mount Adapter with the slot where the original stand was removed.
2. Slide the adapter into the slot until it clicks securely into place.
3. Use the provided screw to secure the adapter to the monitor. This screw typically goes into the top hole of the adapter, ensuring a firm connection.
4. Attach your VESA-compatible monitor arm or stand to the adapter using the appropriate screws and washers provided with your VESA mount. The adapter supports both 75x75mm and 100x100mm VESA patterns.

HELPS ORGANIZE  
AND REDUCE CLUTTER



Figure 4.1: Installation diagram for the VESA adapter.

### 4.3. Installation Videos

#### **Video: VESA Adapter for HP M Series monitors (HumanCentric)**

This video demonstrates the installation process of the HumanCentric VESA adapter for HP M-Series monitors, showing how to attach the adapter and then mount it to a VESA arm.

#### **Video: MOUNT-HP02M Feature | VESA Adapter for Compatible HP M-Series Monitors (V I V O)**

This video highlights the features and installation of a VESA adapter for HP M-Series monitors, demonstrating how it integrates with a monitor arm.

### Video: VESA Mount Adapter for HP NOT M Series Monitors (HumanCentric)

This video clarifies which HP monitors are NOT compatible with the M-Series adapter, helping users avoid incorrect purchases.

## 5. OPERATING THE MOUNTED MONITOR

Once the VESA mount adapter is securely installed and your monitor is attached to a VESA-compatible arm or stand, you can adjust your monitor according to the instructions provided with your specific VESA mounting system. The adapter itself is fixed and does not offer additional movement beyond what the VESA mount provides.



Figure 5.1: Monitor mounted on a VESA arm, contributing to an organized workspace.

## DESIGNS WITH YOU IN MIND



Figure 5.2: Ergonomic setup with the monitor mounted on a VESA arm.

## 6. MAINTENANCE

The HumanCentric VESA Mount Adapter requires minimal maintenance. To ensure longevity and proper function:

- Periodically check all screws and connections to ensure they remain tight and secure.
- Clean the adapter with a soft, dry cloth. Avoid abrasive cleaners or solvents.
- Ensure the adapter is not subjected to excessive force or weight beyond the monitor's specifications.

## 7. TROUBLESHOOTING

### 7.1. Adapter Does Not Fit Monitor

If the adapter does not fit your monitor, please double-check your monitor's model number against the compatibility list in Section 2. This adapter is designed for specific HP M-Series and 5-Series monitors only. Incompatible models will not allow the adapter to seat correctly.

## 7.2. Monitor Feels Unstable After Installation

Ensure that all screws securing the adapter to the monitor and the VESA mount to the adapter are tightened properly. Refer to the installation steps in Section 4. If the issue persists, verify that your VESA mount is rated for the weight of your monitor.

## 8. SPECIFICATIONS

Feature	Detail
Brand	HumanCentric
Model Number	101-1064
Material	Metal
Color	Black
VESA Compatibility	75x75mm, 100x100mm
Item Weight	10.2 ounces
Package Dimensions	5.12 x 5.08 x 1.26 inches
Movement Type	Fixed (adapter itself)
Mounting Type	Tabletop Mount (via VESA arm/stand)

## 9. WARRANTY AND SUPPORT

HumanCentric stands behind the quality of its products. If you encounter any problems with your VESA mount adapter, please contact HumanCentric customer support for assistance. Refer to the product packaging or the HumanCentric website for specific warranty details and contact information.