

- › [Control Solutions](#) /
- › [Control Solutions Proflex Encapsulated Solution 32 oz Instruction Manual](#)

Control Solutions Proflex Encapsulated Solution

Control Solutions Proflex Encapsulated Solution 32 oz Instruction Manual

1. PRODUCT OVERVIEW



This image displays the 32 oz bottle of Proflex Encapsulated Solution. The bottle is off-white with a measuring cap on top. The front label clearly shows 'PROFLEX Encapsulated Solutions' along with active ingredients (Lambda-Cyhalothrin, Novaluron, Pyriproxyfen) and a 'KEEP OUT OF REACH OF CHILDREN CAUTION/PRECAUCIÓN' warning.

Proflex Encapsulated Solution is an all-in-one concentrate designed for effective control of various insect pests. Its microencapsulated formulation contains three active ingredients: Lambda-Cyhalothrin, Novaluron, and Pyriproxyfen. This combination provides multiple modes of action, ensuring both fast-acting results and long-lasting residual control against a wide range of insects, including ants, mosquitoes, gnats, flies, and litter beetles.

The product is suitable for both indoor and outdoor applications, functioning as a general surface, crack and

crevice, or spot treatment. It is particularly effective against adult insects like roaches, crickets, and fleas, while also incorporating insect growth regulators (IGRs) for comprehensive pest management.

2. SAFETY INFORMATION

KEEP OUT OF REACH OF CHILDREN

CAUTION / PRECAUCIÓN

Always read and follow the actual product label for complete safety instructions, warnings, and first aid measures before use. Misuse of this product can cause harm.

Wear appropriate personal protective equipment (PPE) as directed on the product label, which may include gloves, eye protection, and long-sleeved clothing.

3. INGREDIENTS

Proflex Encapsulated Solution contains the following active ingredients:

- Lambda-cyhalothrin - 3.88 %
- Novaluron - 1.30 %
- Pyriproxyfen - 1.30 %

4. USAGE INSTRUCTIONS

Proflex is designed for use as a general surface, crack and crevice, or spot treatment. Specific mixing ratios and application methods vary depending on the target pest and treatment area. **Always refer to the product label for precise dilution rates and application instructions.**

4.1. Preparation

- Identify the target pest and the areas requiring treatment.
- Clear the treatment area of food, utensils, and sensitive items.
- Ensure proper ventilation if applying indoors.

4.2. Mixing

- Shake the Proflex bottle well before use.
- Measure the required amount of concentrate using the bottle's measuring cap or a separate measuring device.
- Add the measured concentrate to the appropriate volume of water in a sprayer.
- Mix thoroughly to ensure a uniform solution.

4.3. Application

- Apply the diluted solution as a coarse, low-pressure spray to target surfaces.
- For crack and crevice treatments, use a pin-point or fan spray nozzle to direct the product into hidden areas.
- Avoid overspray and runoff. Do not apply to areas where food is prepared or stored unless specifically directed by the label.
- Re-entry intervals and post-application ventilation requirements must be observed as specified on the product label.

5. TARGET PESTS

Proflex Encapsulated Solution is effective against a broad spectrum of insect pests, including but not limited to:

- Ants (including RIFA)
- Bed bugs
- Cockroaches
- Crickets
- Earwigs
- Firebrats
- Silverfish
- Stinkbugs
- Fleas
- Ticks
- Flying insect pests (e.g., mosquitoes, gnats, flies)
- Stored product pests
- Boxelder bugs
- Centipedes
- Millipedes
- Pillbugs
- Sowbugs

Refer to the product label for a complete list of all listed pests.

6. APPLICATION AREAS

This product can be used in a variety of indoor and outdoor settings. Always consult the product label for specific restrictions and approved application sites.

- Aircraft cargo areas
- Apartments
- Bakeries
- Buses
- Food manufacturing and processing facilities
- Food establishments
- Granaries
- Grain mills
- Hotels
- Industrial buildings
- Laboratories
- Mobile homes
- Offices
- Restaurants
- Schools
- Ships

- Trucks
- Warehouses
- Wineries

See the product label for a complete list of approved application sites.

7. STORAGE AND SHELF LIFE

Proflex Encapsulated Insecticide has a shelf life of 3 to 5 years when stored properly. To maintain product efficacy:

- Store in a cool, dry place.
- Keep the container tightly closed when not in use.
- Store away from direct sunlight and extreme temperatures.
- Keep out of reach of children and pets.

8. SPECIFICATIONS

| | |
|-----------------------------|-------------------------------|
| Brand | Control Solutions |
| Product Name | Proflex Encapsulated Solution |
| Item Volume | 32 Fluid Ounces |
| Item Form | Oil |
| Scent | Unscented |
| Manufacturer | Control Solutions |
| ASIN | B0B6PR3WXQ |
| Date First Available | July 15, 2022 |

This manual provides general information. Always refer to the physical product label for the most current and complete instructions and safety guidelines.

Related Documents - Proflex Encapsulated Solution



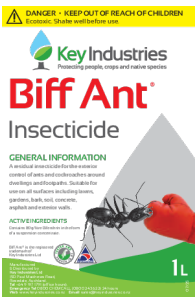
[BioAdvanced 24 Hour Lawn Insect & Fire Ant Killer: Effective Lawn Pest Control](#)

Learn how to effectively control lawn insects and fire ants with BioAdvanced 24 Hour Lawn Insect & Fire Ant Killer. This guide provides application instructions, pest lists, and safety information for homeowners.



[BioAdvanced Season Long Grub Control: Effective Lawn Pest Treatment](#)

BioAdvanced Season Long Grub Control is a ready-to-spread granular insecticide that kills grubs, mole crickets, chinch bugs, and other lawn-damaging pests for season-long protection. Learn how to apply, spreader settings, and safety information.



[Biff Ant Insecticide: Outdoor Pest Control Guide by Key Industries](#)

Comprehensive guide to Biff Ant Insecticide by Key Industries for controlling ants, cockroaches, and other outdoor pests. Includes application rates, safety precautions, and disposal instructions.



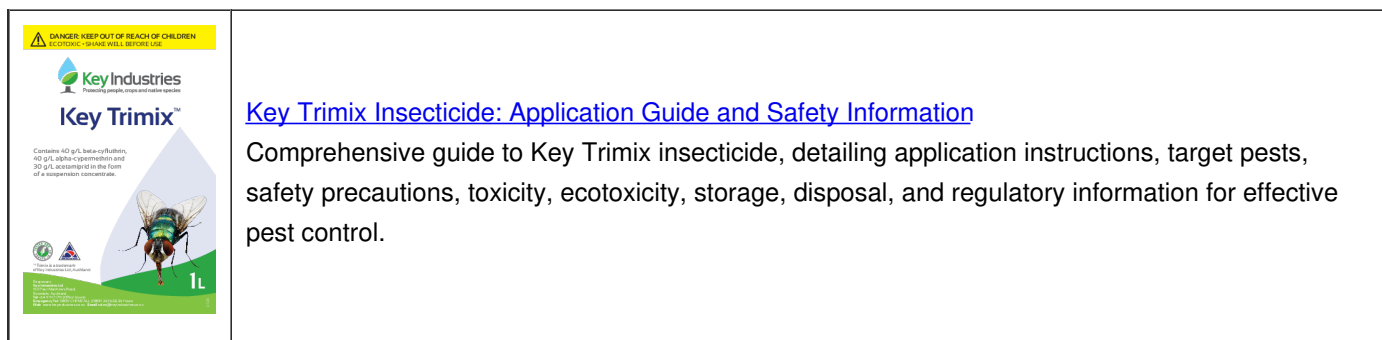
[Double Trouble Ready-to-Use Insecticide: Technical Data and Application Guide](#)

Comprehensive guide to Double Trouble Ready-to-Use Insecticide, detailing its features, specifications, active ingredients, and application instructions for indoor and outdoor pest control. Covers target pests, usage areas, and safety precautions.



[Quali-Pro Bifenthrin I/T 7.9F Insecticide/Termiticide Label and Application Guide](#)

Comprehensive guide for Quali-Pro Bifenthrin I/T 7.9F, an insecticide and termiticide. Includes first aid, precautionary statements, environmental hazards, detailed application directions for various pests and sites, mixing instructions, and storage/disposal information.

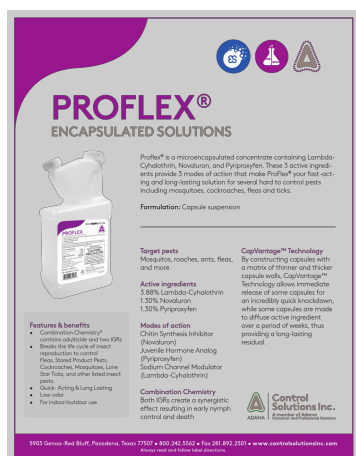


Documents - Control Solutions – Proflex Encapsulated Solution



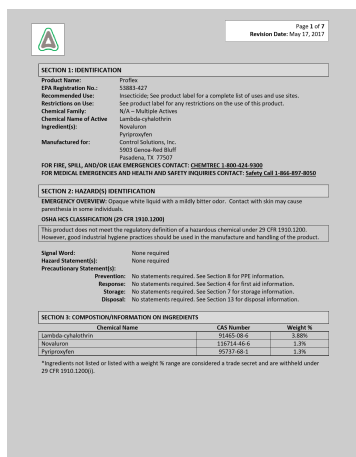
[\[pdf\]](#) Label

Proflex Label1c s3 us west 1 amazonaws agrian cg fs1 production s ||| ||| LAMBDA-CYHALOTHRIN GROUP 3A INSECTICIDE NOVALURON GROUP 15 INSECTICIDE PYRIPROXYFEN GROUP 7C INSECTICIDE ProFlex Encapsulated Solutions Effective control of Fleas, Cockroaches, Flies, Mosquitoes, Gnats, Crickets, and Ants Contains adulticide and two IGRs Convenient combination product For indoor use



[\[pdf\]](#) Borchure

82300329 brochure Brochure Shop Control Solutions Proflex Insecticide Reinders reinders media ProductAttachment 8 2 ||| **PROFLEX ENCAPSULATED SOLUTIONS** Proflex is a microencapsulated concentrate containing LambdaCyhalothrin, Novaluron, and Pyriproxyfen. These 3 active ingredients provide 3 modes of action that make Proflex your fast-acting and long-lasting solution for several hard to control pests including mosquito... lang:en score:17 filesize: 240.24 K page_count: 1 document date: 2019-07-25



[\[pdf\]](#) Datasheet Safety Datasheet Label

Leanna Bosarge ViewProflex Insecticide Long Lasting Control for Ants Mosquitoes MorePROFLEXMSDScdn shopify s files 1 0664 5851 7690 PROFLEXMSDS Proflex Encapsulated Solution SDSViewProflex Pest Products DepotProflex Morecdn 0571 1645 9214 v 1679586761cdn ||| **SAFETY DATA SHEET PROFLEX** Page 1 of 7 Revision Date: May 17, 2017 **SECTION 1: IDENTIFICATION** Product Name: Proflex EPA Registration No.: 53883-427 Recommended Use: Insecticide; See product label for a complete list of uses and use sites. Restrictions on Use: See product label for any restri... lang:en score:13 filesize: 204.46 K page_count: 7 document date: 2018-06-25



[pdf] Label

Proflex Label s3 us west 1 amazonaws agrian cg fs1 production s |||

GROUP 3 7C 15 INSECTICIDE PROFLEX Encapsulated Solutions Effective long-term control of Fleas, Roaches, Flies, Mosquitoes, Gnats, Crickets, and Beetles. Contains adulticide and two IGRs. Convenient combination product for indoor/outdoor use. For use in, on, and around buildings and structures.

lang:en score:12 filesize: 1.54 M page_count: 29 document date: 2018-07-30



[pdf] Label

ViewProflex Insecticide Long Lasting Control for Ants Mosquitoes MoreProflex Encapsulated Solution

Label 2020cdn shopify s files 1 0664 5851 7690 Proflex 2020 labelViewProflex Pest Products

DepotProflex 2020Proflex 0571 1645 9214 v 1679586761cdn |||

GROUP 3 7C 15 INSECTICIDE PROFLEX Encapsulated Solutions Effective long-term control of Fleas, Roaches, Flies, Mosquitoes, Gnats, Crickets, and Beetles. Contains adulticide and two IGRs. Convenient combination product for indoor/outdoor use. For use in, on, and around buildings and structures.

lang:en score:12 filesize: 1.54 M page_count: 29 document date: 2018-07-30



[pdf] Label

Proflex1 Label s3 us west 1 amazonaws agrian cg fs1 production s

LAMBDA-CYHALOTHRIN GROUP 3 INSECTICIDE NOVALURON GROUP 15 INSECTICIDE PYRIPROXYFEN GROUP 7 INSECTICIDE PROFLEX Encapsulated Solutions Effective control of Fleas, Roaches, Flies, Mosquitoes, Gnats, Crickets, and Beetles. Contains adulticide and two IGRs. Convenient combination product for indoor/outdoor use. For use in, on, and around buildings and structures.

lang:en score:10 filesize: 187.29 K page_count: 41 document date: 2020-07-29



[pdf] Label

Proflex Label Encapsulated Insecticide PROFLEXLabel docs diypestcontrol SPEC LABELS 2 ||| LAMBDA-CYHALOTHRIN GROUP 3A INSECTICIDE NOVALURON GROUP 15 INSECTICIDE PYRIPROXYFEN GROUP 7C INSECTICIDE PROFLEX Encapsulated Solutions For Pest Control Operators and Commercial Use Only For use in, on and around buildings and structures for the control of listed pests. May be used on the fo...

lang:en score:10 filesize: 2.09 M page_count: 49 document date: 2024-05-23



[pdf] Label

Microsoft Word Specimen Proflex 53883 427 docx doyourownpestcontrol SPEC LABELS GROUP 3 7C 15 INSECTICIDE PROFLEX ENCAPSULATED SOLUTIONS Effective long-term control of Fleas, Roaches, Flies, Mosquitoes, Gnats, Crickets, Liter Beetles Ants Contains adulticide and two IGRs Convenient combination product For indoor/outdoor use For use in, on and around buildings and struc... lang:en score:10 filesize: 1.19 M page_count: 14 document date: 2018-10-30