

## Manuals+

[Q & A](#) | [Deep Search](#) | [Upload](#)

[manuals.plus](#) /

› [CAMECHO](#) /

› [CAMECHO 2G+32G Android 13 Car Stereo User Manual for Honda Civic 2006-2011](#)

## CAMECHO 2G+32G Android 13 Car Stereo

### CAMECHO 2G+32G Android 13 Car Stereo User Manual

Model: 2G+32G Android 13 Car Stereo for Honda Civic 2006-2011

## INTRODUCTION

This manual provides detailed instructions for the installation, operation, and maintenance of your CAMECHO 2G+32G Android 13 Car Stereo. Please read this manual thoroughly before use to ensure proper functionality and safety. This unit is designed for Honda Civic models from 2006 to 2011 (low-end version, without Canbus).

## PRODUCT OVERVIEW

The CAMECHO Android 13 Car Stereo features a 10.1-inch 2.5D 1080P HD touch screen, 2GB RAM, and 32GB ROM for smooth operation. It supports wireless CarPlay and Android Auto, GPS navigation, Bluetooth, Wi-Fi, and FM/RDS radio. A 720P AHD backup camera and external microphone are included for enhanced functionality.



Image: CAMECHO Android 13 Car Stereo installed in a Honda Civic dashboard, showing the large touchscreen display. This image illustrates the product's appearance when integrated into the vehicle.

## WHAT'S IN THE BOX

Verify that all components are present before beginning installation:

- 1 x Android Head Unit
- 1 x AHD Backup Camera
- 1 x External Microphone
- 1 x GPS Antenna
- 1 x Power Cable
- 1 x RCA Cable
- 2 x USB Cable
- 1 x Rear Camera Input Cable
- 1 x Installation Tool
- 1 x Instruction manual

## Disassembly:

① Use a pry bar to open the original car frame below the steering wheel. Loosen the screws securing the original car frame above the steering wheel. Pull the steering wheel downward.



② Use a pry bar to open the original car frame above the steering wheel. Remove the frame. Unplug the wires connected to the original car.



③ Use a pry bar to open the decorative panel inside the storage box. Loosen the two screws securing the original car radio below. Remove the original car radio and unplug the wires connected to the vehicle.



④ Pry off the Knob kit from the original car radio. Loosen the four screws on both sides securing the air conditioning control panel. Remove the air conditioning control panel. Unscrew the two screws securing the emergency stop button. Take off the emergency stop button.



⑤ Loosen the two screws securing the passenger airbag button and remove the button. Unscrew the three screws securing the air conditioning vent and remove the vent.



## PROPOSE

Before starting the replacement job, you should prepare tools such as a plastic pry tool and a screwdriver, and make sure the car's power is cut off during the installation.

## Installation (If the wiring harness does not match, please contact customer service to request the correct wiring harness)

① Install the radio onto the new frame. Tighten the four screws on both sides to secure the radio. Install the emergency stop button onto the new frame and tighten the screws on both sides. Secure the air conditioning control panel onto the new frame and tighten the four screws on both sides.







② Install the knob kit in the designated positions, then mount the air conditioning vent onto the new frame, tighten the three screws on both sides, and proceed to connect the wiring between the new radio and the original vehicle.



③ Install the new radio in its designated position, reattach the original car frame above the steering wheel, tighten the screws below, then reassemble the original car frame below the steering wheel to complete the installation of the new radio.



Image: A visual representation of all items included in the product package, such as the head unit, various cables (power, RCA, USB, camera input), GPS antenna, external microphone, AHD backup camera, and an installation tool.

## INSTALLATION GUIDE

Professional installation is recommended. If you choose to install it yourself, please follow these steps carefully. Ensure the vehicle's power is disconnected before starting.

### 1. Disassembly of Original Car Radio

1. Use a pry bar to open the original car frame above the steering wheel. Loosen the screws securing the original car frame above the steering wheel. Pull the steering wheel downward.
2. Use a pry bar to open the decorative panel inside the storage box. Loosen the two screws securing the original car radio below. Remove the original car radio and unplug the wires connected to the vehicle.
3. Pull off the knob kit from the original car radio. Loosen the four screws on both sides securing the air conditioning control panel. Remove the air conditioning control panel. Unscrew the two screws securing the emergency stop button. Take off the emergency stop button.
4. Loosen the two screws securing the passenger airbag button and remove the button. Unscrew the three screws securing the air conditioning vent and remove the vent.



Image: Visual guide showing the disassembly process of the original Honda Civic dashboard and radio unit, using a pry tool and screwdriver.

## 2. New Unit Installation

1. Install the radio onto the new frame. Tighten the four screws on both sides to secure the radio. Install the emergency stop button onto the new frame and tighten the screws on both sides. Secure the air conditioning control panel onto the new frame and tighten the four screws on both sides.
2. Install the knob kit in the designated positions, then mount the air conditioning vent onto the new frame, tighten the three screws on both sides, and proceed to connect the wiring between the new radio and the original vehicle.
3. Install the new radio in its designated position, reattach the original car frame above the steering wheel, tighten the screws below, then reassemble the original car frame below the steering wheel to complete the installation of the new radio.

24 Hours Customer Support

Buy Now

Ships from

Amazon

Sold by

Dongguan Yanningqiu Trading Company

Returns

30-day refund/  
replacement

Gift options

Available at checkout

Step 1: Click "Dongguan Yanningqiu Trading Company"

Have a question for Dongguan Yanningqiu Trading Company?

Ask a question

Step 2: Click "Ask question"

Image: Step-by-step visual guide for installing the new CAMECHO car stereo, including securing the unit, reattaching control panels, and connecting wiring.

## 3. Wiring Connections

- **Power Cable:** Connect the main power harness to the car stereo and the vehicle's wiring.

- **RCA Cable:** Connect for audio/video input/output as needed (e.g., external amplifier, subwoofer).
- **USB Cable:** Connect the provided USB cables for data transfer or charging.
- **GPS Antenna:** Connect the GPS antenna and place it in a location with a clear view of the sky for optimal signal reception.
- **External Microphone:** Connect the external microphone for improved call quality.
- **Rearview Camera:**
  - a. Connect the rearview camera's power cable to the positive pole of the car's reversing light.
  - b. Connect the rearview camera's ground cable to the negative pole of the car's reversing light.
  - c. Connect the rearview camera video input cable to the "CAM IN" port on the head unit. The reversing input must be plugged in even if the camera is not used.



Image: Detailed wiring diagram showing connections for the rearview camera, including power, ground, and video input to the head unit.

#### 4. Steering Wheel Control (SWC) Setup

After connecting the power cable, you need to configure the steering wheel controls:

1. Go to **Car Settings > General > SWC Type**.
2. Choose "**Learning Type**".
3. Enter the SWC setting interface and complete the steering wheel button learning process. Study again if it fails.



Image: Screenshots illustrating the menu navigation and steps to set up steering wheel controls on the CAMECHO car stereo.

#### Installation Video Guide

Your browser does not support the video tag.

Video: An official installation guide for the CAMECHO Car Stereo for Honda Civic, demonstrating the unboxing and initial setup process.

#### OPERATING INSTRUCTIONS

##### Wireless Apple CarPlay & Android Auto

Connect your smartphone wirelessly for seamless integration of navigation, calls, messages, and music.

- **For Apple CarPlay:**
  - a. Enable Bluetooth on your iPhone and pair with the car radio.



- b. Turn on the "Zlink" app on the car stereo.
- c. If connection fails, connect your phone to the car radio's personal hotspot, then click the "Zlink" app again. Ensure Bluetooth and hotspot remain connected.

- **For Android Auto:**

- a. Ensure you have the "Android Auto" app installed on your phone.
- b. Enable Bluetooth on your Android phone and pair with the car radio.
- c. Turn on the "Zlink" app on the car stereo.



Image: Display of the Wireless Apple CarPlay interface on the car stereo, showing common apps like Phone, Music, Maps, and Messages.

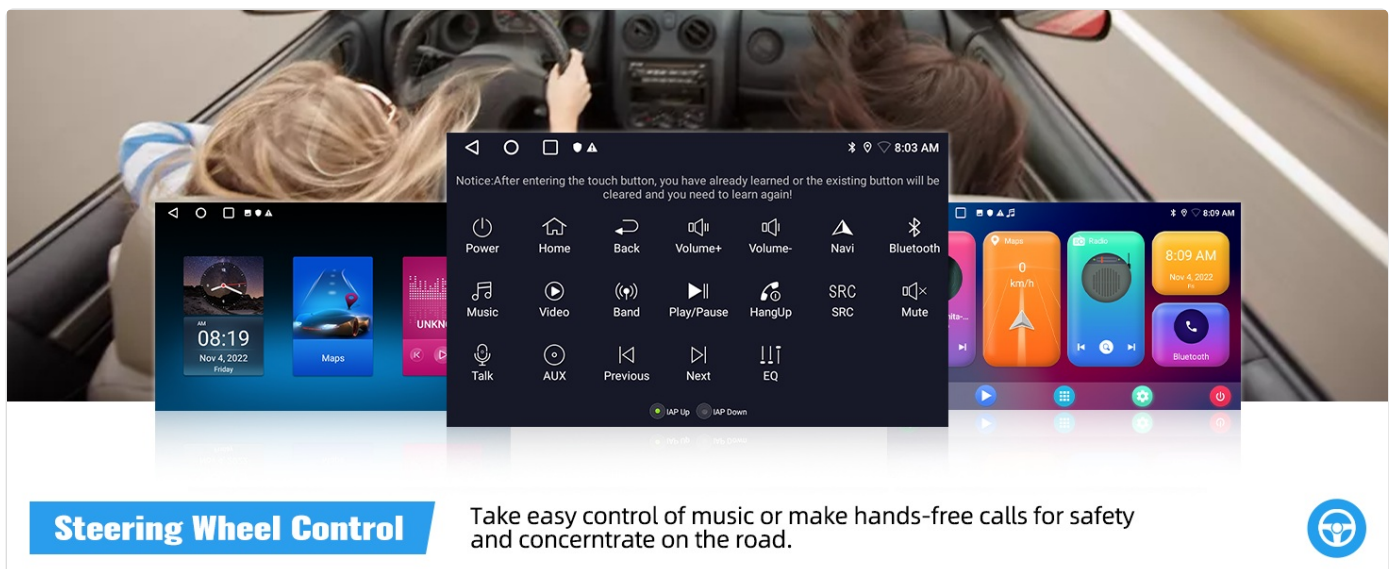


Image: Display of the Wireless Android Auto interface on the car stereo, featuring apps like Google Maps, YouTube Music, and Spotify.

## GPS Navigation

The unit includes built-in GPS navigation. You can download offline navigation maps directly from the Play Store. Online maps are also available when connected to Wi-Fi.



Image: The car stereo screen showing a GPS navigation map with a highlighted route and turn-by-turn directions.

## Bluetooth Handsfree & Music Streaming

Connect your phone via Bluetooth for hands-free calling and audio streaming. This feature enhances driving safety by allowing you to manage calls without holding your phone.

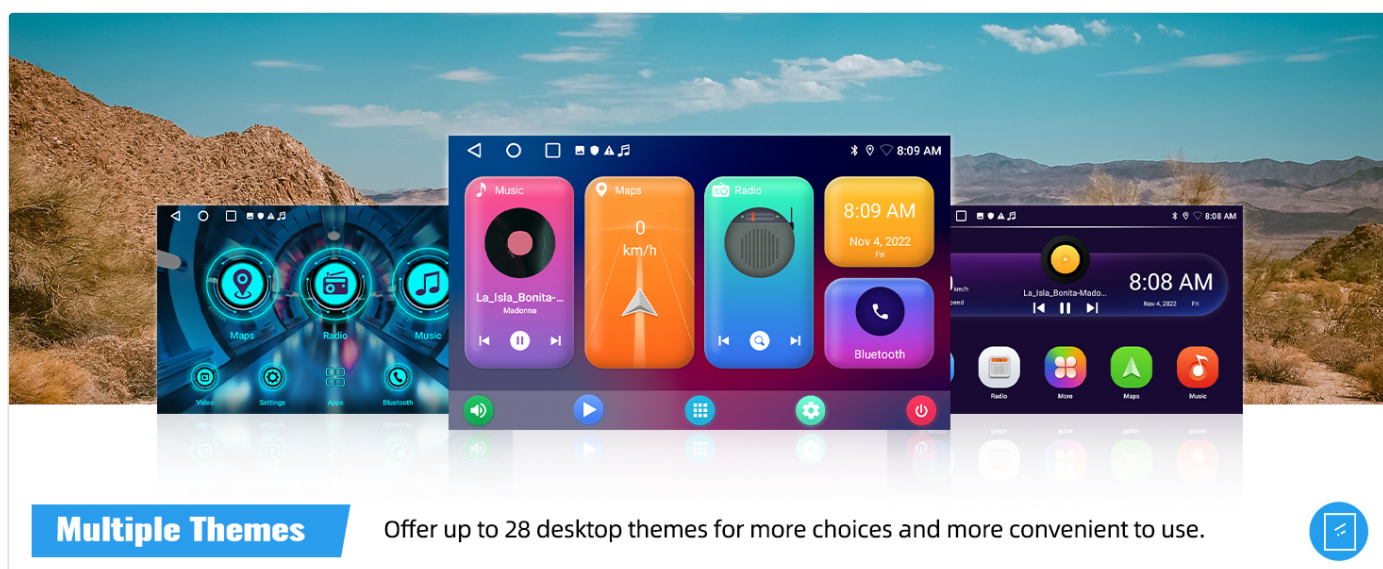


Image: The car stereo screen showing the Bluetooth interface for making calls and playing music, with a phone keypad and music controls.

## FM/RDS Radio

Tune into your favorite FM radio stations with RDS (Radio Data System) support for station information.





Image: The car stereo screen showing the FM/RDS radio interface, displaying the current frequency and options for tuning and presets.

### Wi-Fi Connection

Connect to Wi-Fi via a personal hotspot or available network to download apps, stream music, and browse online content.



Image: The car stereo screen displaying Wi-Fi connectivity and a selection of app icons, indicating internet access for various applications.

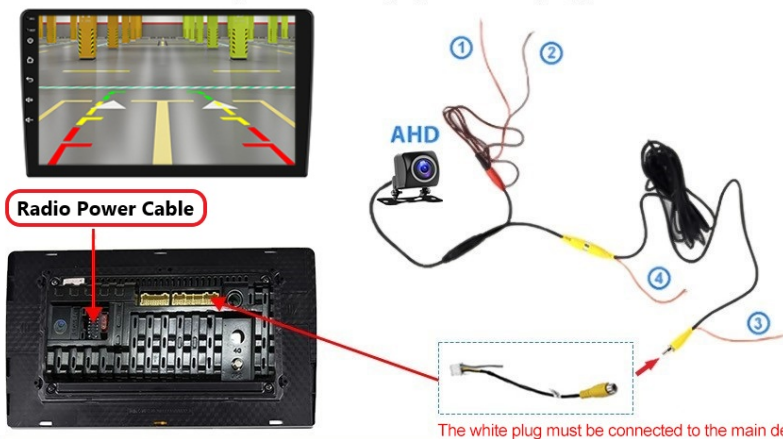
### Split Screen Functionality

Utilize the split-screen feature to run two applications simultaneously, such as navigation and music playback.



## Reversing Camera Installation

**Tip:** The reversing input must be plugged in even when the reversing camera is not used.



## Reversing Camera Wiring

- ①④ Connect to the positive pole of the power supply of the car's reversing light.
- ② Connect to the negative pole of the power supply of the car's reversing light.
- ③ The reversing trigger is controlled by stereo, so ③ does not require to connect!

The white plug must be connected to the main device, or you can't get bluetooth and wifi signals.

Image: The car stereo screen in split-screen mode, displaying a navigation map on one side and a music player on the other, allowing for multitasking.

## AHD Backup Camera

The included 720P AHD rear view camera automatically displays a clear image when reversing, providing safer parking assistance.

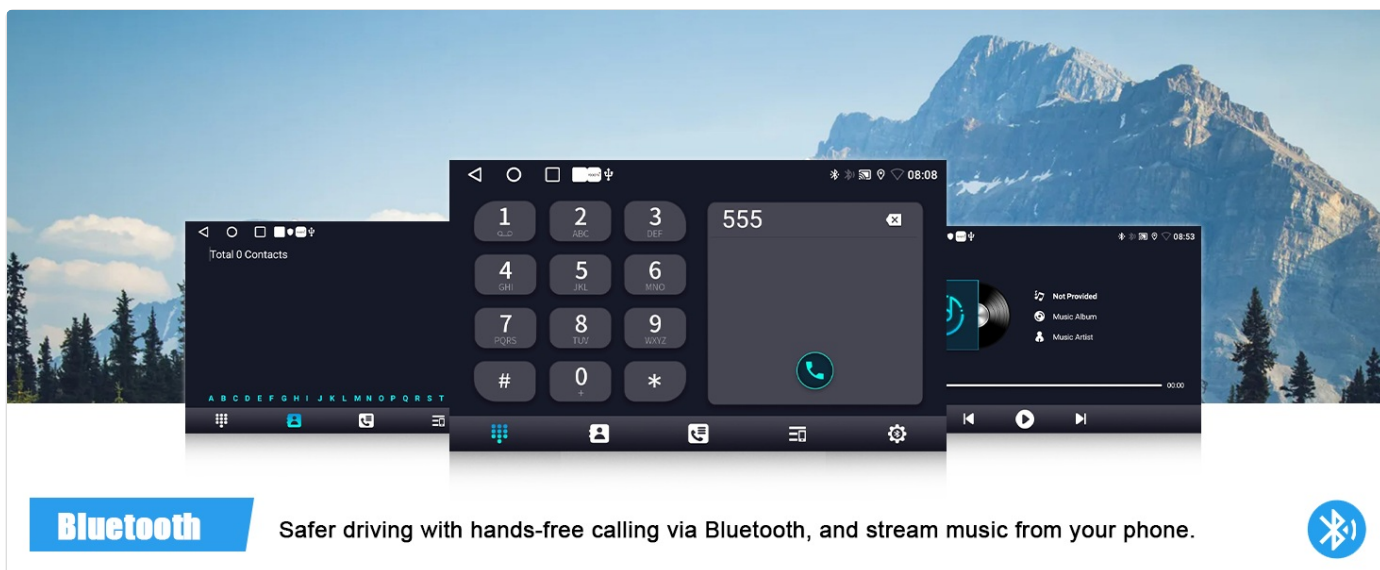


Image: The car stereo screen showing the live feed from the rearview camera, complete with dynamic parking guidelines for assistance.

## Equalizer Adjustments

Customize your audio experience with the built-in preset EQ, offering various music styles like Rock or Pop, and advanced sound adjustments.

Image: The car stereo screen showing the equalizer settings interface, allowing users to select preset audio profiles or manually adjust sound frequencies.

## Multiple UI Themes

Personalize your car stereo's appearance by choosing from a variety of desktop themes.

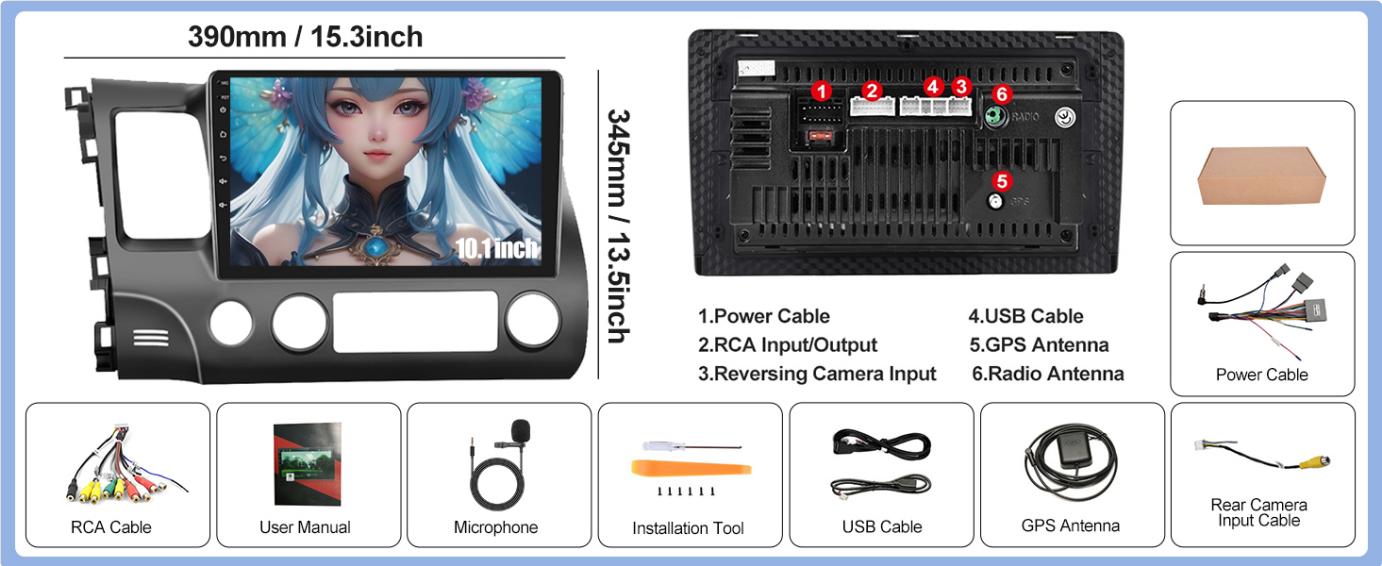


Image: The car stereo screen showcasing different user interface themes, demonstrating customization options for the display.

Mirror Link

Cast your smartphone's screen to the car radio touchscreen for convenient viewing of content.



Image: The car stereo screen showing a mirrored display from a smartphone, illustrating the Mirror Link feature.

TROUBLESHOOTING

If you encounter any issues, please refer to the following common troubleshooting tips. For more detailed solutions, consult the included "Troubleshooting Guide" or contact customer support.

- **No Power:** Check all power cable connections. Ensure the vehicle's ignition is on.
- **No Sound:** Verify speaker connections. Check volume levels and EQ settings. Ensure no cables are loose.
- **GPS Signal Loss:** Ensure the GPS antenna is placed in an unobstructed location.
- **CarPlay/Android Auto Connection Issues:** Re-pair Bluetooth, check Wi-Fi hotspot connection, and restart the "Zlink" app.
- **Backup Camera Not Displaying:** Check camera wiring, especially the reversing trigger connection. Ensure the camera input cable is securely plugged into the head unit.
- **Steering Wheel Controls Not Working:** Re-perform the SWC learning process in settings.

SPECIFICATIONS

Feature	Specification
Item Weight	4.27 pounds

Product Dimensions	15.4 x 5.2 x 9.7 inches
Display Size	10.1 Inches
Operating System	Android 13
RAM + ROM	2G RAM + 32G ROM
Voice Command	Microphone, Touchscreen
Connectivity Technology	Bluetooth, Wi-Fi
Special Features	Android Auto, Apple CarPlay, GPS Navigation, FM/RDS Radio, AHD Backup Camera, Split Screen, Mirror Link, Steering Wheel Control
Compatible Devices	Honda Civic 2006-2011 (Low-End version, without Canbus)
Audio Output Mode	Stereo
Control Method	Touch
Manufacturer	CAMECHO

## WARRANTY AND SUPPORT

The CAMECHO Car Stereo comes with a **1-Year Warranty**. For technical assistance, troubleshooting, or warranty claims, please contact CAMECHO customer support. You can reach support by emailing [CAMECHOVIP@126.com](mailto:CAMECHOVIP@126.com).

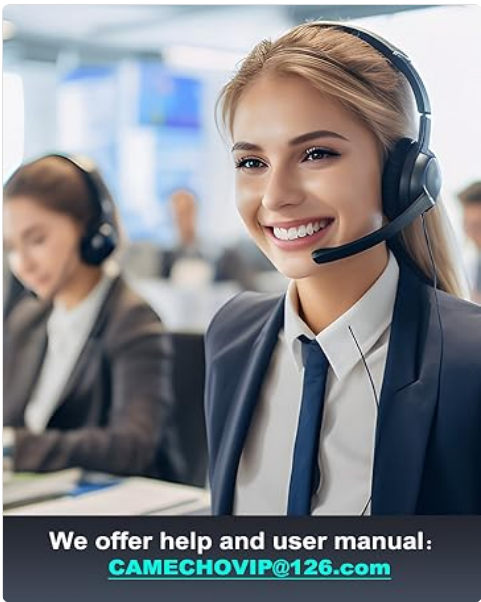


Image: Customer support information, including an email address for assistance.



