



Manuals.plus /

› WININMETA /

› WININMETA Solar Panel Charger User Manual

WININMETA HHSP01

WININMETA Solar Panel Charger User Manual

Model: HHSP01

1. INTRODUCTION

Thank you for choosing the WININMETA Solar Panel Charger. This product is designed to provide continuous, eco-friendly power to your compatible Eufy security cameras, eliminating the need for frequent battery recharges. With its robust, weather-resistant design and flexible installation options, it ensures your surveillance system remains operational year-round.

This manual provides detailed instructions for the setup, operation, and maintenance of your solar panel charger. Please read it thoroughly before installation and keep it for future reference.

2. PRODUCT OVERVIEW & PACKAGE CONTENTS

The WININMETA Solar Panel Charger is a high-efficiency 5W solar panel designed for outdoor use. It features a durable construction and a long cable for versatile placement.

Package Contents:

- 3 x Solar Panels (with 3M/9.8ft Micro USB cable attached)
- 3 x USB-C Port Connectors
- 3 x 360-degree Adjustable Mounting Brackets
- 9 x Screws
- 240 x Cable Ties

What's You Can Get?



Image: All components included in the 3-pack solar panel charger kit.

Compatibility:

This solar panel is compatible with various Eufy camera models, including Eufycam 3/3C/2C/2C Pro/E40/E20/2/2 Pro/E/L20/L40/Solo/SoloCam Spotlight.

Compatible with Eufycam



EufyCam E



EufyCam E20



EufyCam E40



EufyCam 2/2 Pro



EufyCam 2C/2C Pro



Image: Visual representation of compatible Eufy camera models.

3. SETUP AND INSTALLATION

Proper installation is crucial for optimal performance. Follow these steps to install your solar panel charger.

3.1 Choosing an Installation Location:

Select a location that receives direct sunlight for most of the day, ideally 5-6 hours. Avoid areas shaded by trees, buildings, or other obstructions. The 9.8ft (3M) cable provides flexibility for placement away from the camera if needed.



Image: Illustrates the importance of direct sunlight for the solar panel.

Come with 3M Cable

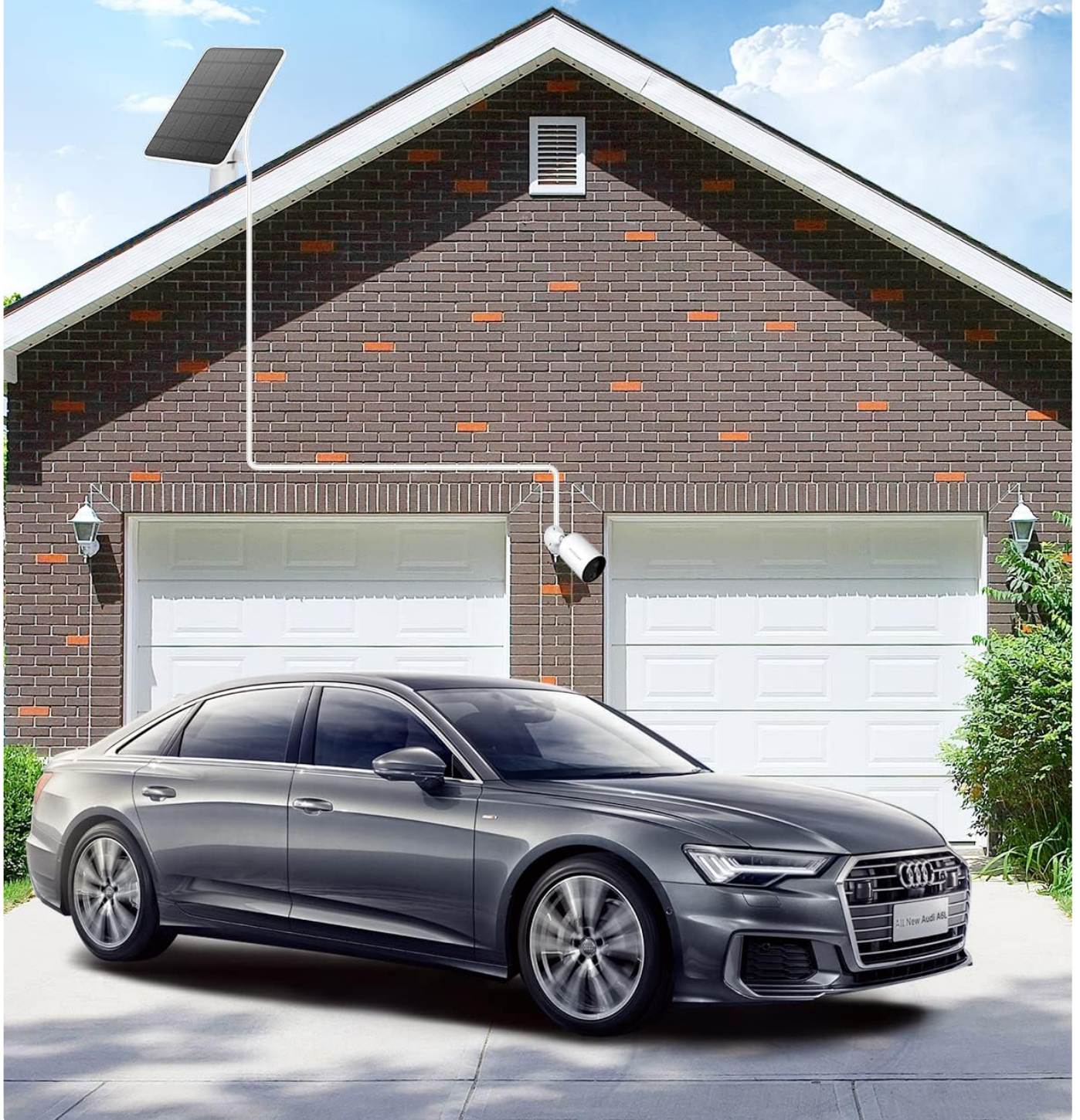


Image: Solar panel installed on a roof, connected to a camera below, highlighting the long cable.

Fit Anywhere



Image: Various suitable locations for mounting the solar panel.

3.2 Mounting the Solar Panel:

1. **Mark Hole Positions:** Hold the mounting bracket against the desired installation surface. Use a pencil to mark the positions for the screw holes.
2. **Drill Holes:** Drill pilot holes at the marked positions. Insert the wall anchors (if necessary for your surface type).
3. **Attach Bracket:** Secure the mounting bracket to the wall using the provided screws.
4. **Attach Solar Panel:** Screw the solar panel onto the mounting bracket. Ensure it is firmly attached.

5. **Adjust Angle:** Utilize the 360-degree adjustable bracket to position the solar panel for maximum sun exposure. The bracket allows for both 360° rotation and 90° tilt.
6. **Connect to Camera:** Plug the Micro USB or USB-C connector from the solar panel cable into your Eufy camera's charging port. Ensure the connection is secure and sealed to maintain waterproofing.

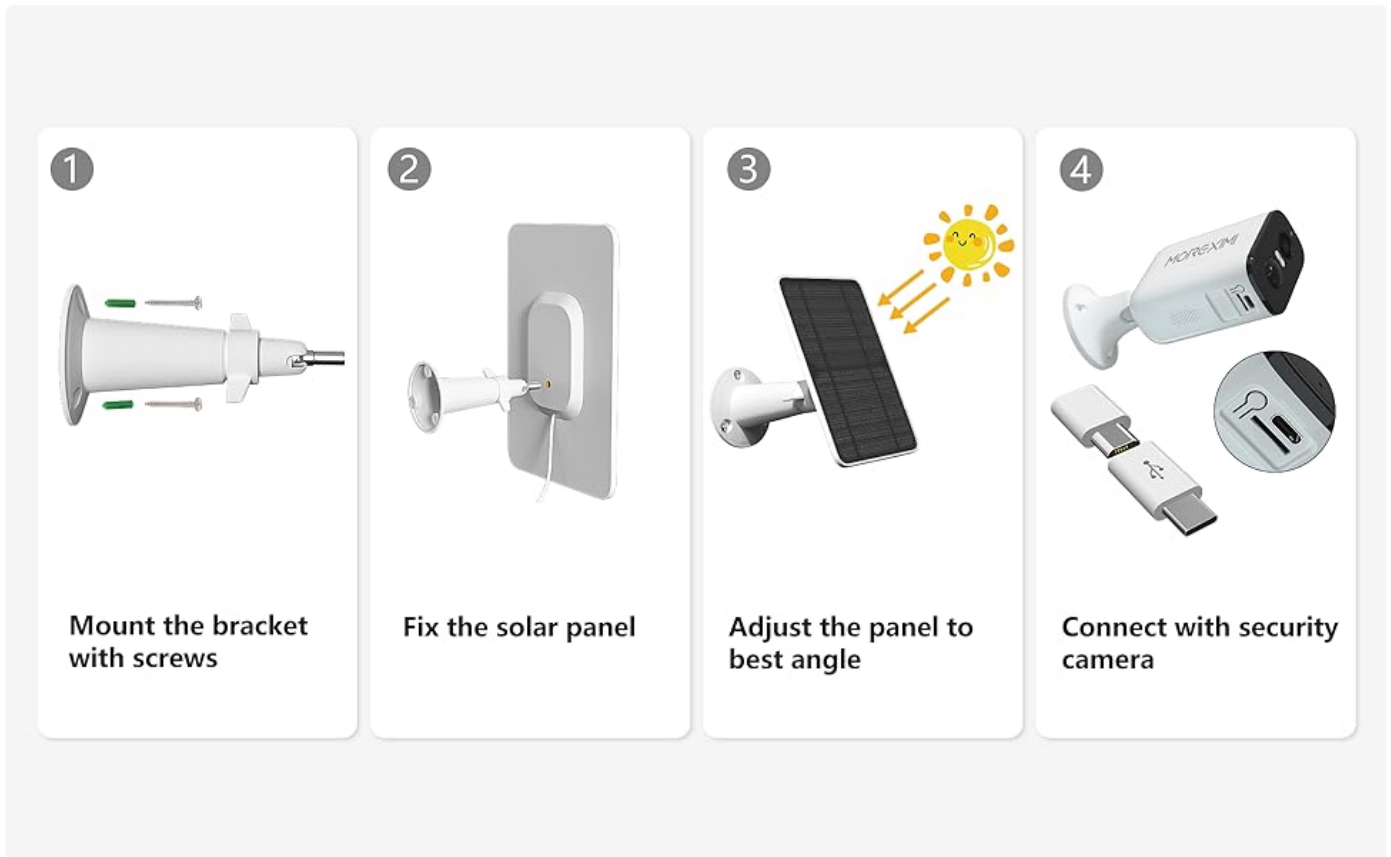


Image: Step-by-step visual guide for solar panel installation.

Adjustable Bracket

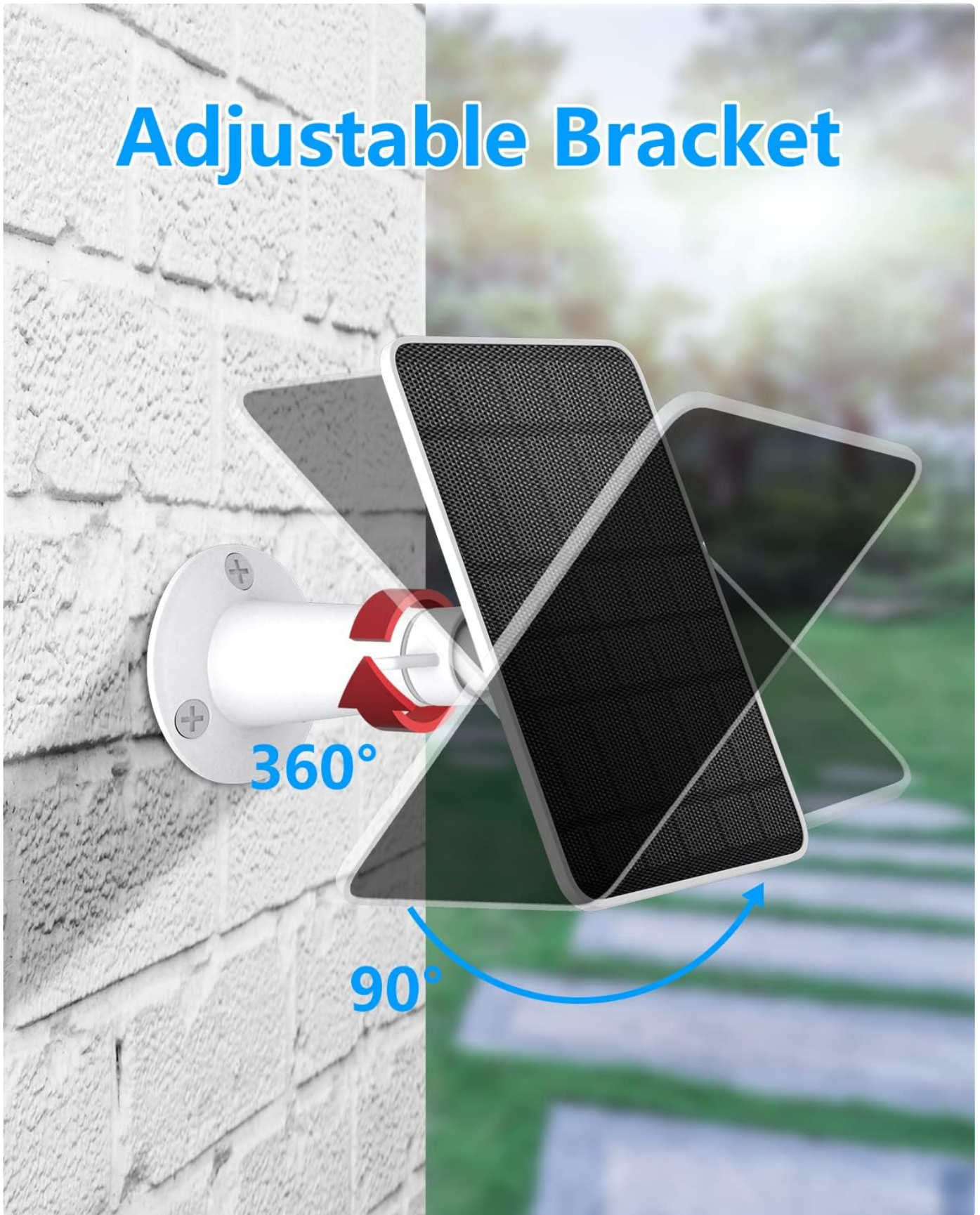


Image: The adjustable bracket allows for precise positioning.

Your browser does not support the video tag.

Video: A detailed guide on installing the Eufy solar panel, demonstrating marking hole positions, mounting the bracket, attaching the panel, and adjusting its angle for optimal sunlight.

4. OPERATING INSTRUCTIONS

Once installed and connected, the solar panel will automatically begin charging your Eufy camera when exposed to sufficient sunlight. The charging efficiency depends on the intensity of the sun's rays and the power consumption of your camera.

- **Continuous Charging:** The 5W power output ensures efficient and faster charging compared to standard solar panels, providing continuous power to your camera.
- **Camera Settings:** For optimal performance, ensure your Eufy camera's power settings are configured to recognize and utilize the solar panel for charging. Refer to your Eufy camera's manual for specific instructions on adjusting power settings.

5V 4W Solar Panel for Security Camera

Non-Stop Solar Power & Eco-Friendly & Cost-Saving



Image: Solar panel providing power to a security camera.

Image: The solar panel provides continuous charging under various light conditions.

5. MAINTENANCE

To ensure the longevity and optimal performance of your solar panel charger, periodic maintenance is recommended.

- **Cleaning:** Regularly clean the surface of the solar panel to remove dust, dirt, leaves, or other debris that may obstruct sunlight. Use a soft, damp cloth. Avoid abrasive cleaners or harsh chemicals.
- **Connection Check:** Periodically inspect the cable connection to the camera to ensure it remains secure and waterproof.
- **Mounting Stability:** Check the mounting bracket and screws to ensure they are still firmly attached to the surface, especially after severe weather conditions.
- **Weather Resistance:** The solar panel is IP65 waterproof, designed to withstand heavy snow, heavy rain, and other severe weather conditions.

IP65 Waterproof



Image: The solar panel is designed to be IP65 waterproof, withstanding rain.

6. TROUBLESHOOTING

If you encounter issues with your solar panel charger, try the following troubleshooting steps:

Problem	Possible Cause	Solution
Camera not charging.	Insufficient sunlight.	Relocate the solar panel to an area with more direct sunlight. Ensure no obstructions are blocking the panel.
Camera not charging.	Loose or improper connection.	Check that the Micro USB/USB-C cable is securely plugged into both the solar panel and the camera. Ensure the waterproof seal is intact.
Camera not charging.	Dirty solar panel surface.	Clean the solar panel surface to remove any dirt, dust, or debris.
Camera battery draining quickly.	High camera activity or low light conditions.	Adjust camera settings to reduce power consumption (e.g., motion detection sensitivity). Ensure the solar panel receives adequate sunlight.
Panel not securely mounted.	Loose screws or bracket.	Tighten all screws on the mounting bracket. Consider using threadlocker for added security if needed.

7. SPECIFICATIONS

Feature	Detail
Brand	WININMETA
Model Number	HHSP01
Power Output	5W (Max)
Voltage	5 Volts
Cable Length	9.8ft (3M)
Connectors	Micro USB & USB-C
Waterproof Rating	IP65
Operating Temperature	14°F-122°F (-10°C to 50°C)
Material	Monocrystalline Silicon (surface), ABS Plastic (frame)
Item Weight	2.4 pounds (for 3-pack)
Dimensions (L x W x H)	7.87 x 5.12 inches (per panel)

8. WARRANTY AND SUPPORT

WININMETA is committed to providing high-quality products and customer satisfaction. While specific warranty details are not provided in this manual, please refer to the product packaging or the seller's information on the purchase platform for warranty terms and conditions.

For any questions, concerns, or technical assistance, please contact WININMETA customer support through the platform where you purchased the product. Your satisfaction is always our aim.

You can also visit the WININMETA Store on Amazon for more information and products.