

## WisHomee WH-12VBD-008

# WisHomee Dimmable RV Reading Light with USB Charging Port (Model WH-12VBD-008) Instruction Manual

For Models: WH-12VBD-008

## INTRODUCTION

---

Thank you for choosing the WisHomee Dimmable RV Reading Light with USB Charging Port. This manual provides detailed instructions for the safe installation, operation, and maintenance of your new lighting fixture. Please read this manual thoroughly before installation and retain it for future reference.

## PRODUCT OVERVIEW

---

The WisHomee RV Reading Light is designed for DC 12V applications in campers, vans, boats, and motorhomes. It features a flexible arm, dimmable LED light, and an integrated USB charging port.

### Key Features:

- **Standard USB Port:** Integrated 5V/2A USB port for charging mobile devices.
- **Energy Efficient LED:** 3W light source providing 200 lumens, drawing only 0.2A at 12V.
- **Dimmable Warm Light:** 3000K warm white light with touch control for stepless brightness adjustment (10-100%).
- **Flexible and Rotatable Arm:** 360-degree rotatable arm allows for directional lighting without disturbing others.
- **Safe Low Voltage Operation:** Designed specifically for 12V DC systems.

### What's in the Box:

- WisHomee Dimmable RV Reading Light (2 units)
- Mounting Screws (2 per light)
- *Note: USB charging cable is not included.*



Figure 1: WisHomee Dimmable RV Reading Lights with USB Charging Port.

## SAFETY INFORMATION

---

- This light fixture is designed for **DC 12V applications only**. Do not connect to AC power or 110V supplies, as this will irreversibly damage the light and may pose a safety hazard.
- Ensure correct wiring: **Red wire connects to the positive (+) electrode, and black wire connects to the negative (-) electrode**. Incorrect connection will damage the light.
- Always disconnect power before installation, maintenance, or troubleshooting.
- Do not attempt to modify or disassemble the light fixture beyond what is described in this manual.
- Keep away from water and moisture. This product is not waterproof.

## SETUP AND INSTALLATION

---

This light fixture is designed for surface mount, hard-wired installation.

1. **Choose a Mounting Location:** Select a flat surface within your RV, camper, van, or boat where you desire illumination. Ensure there is sufficient space behind the mounting surface for wiring.
2. **Disconnect Power:** Before beginning any wiring, ensure that the 12V DC power supply to the installation area is completely disconnected to prevent electrical shock.
3. **Prepare Wiring:** Identify the positive (+) and negative (-) 12V DC wires from your vehicle's electrical system.
4. **Mount the Base:**
  - Carefully remove the cover of the light's base to access the mounting bracket and wiring terminals. The cover is typically secured by screws on the sides.
  - Position the light base on your chosen surface. Mark the locations for the mounting screws.
  - Drill pilot holes if necessary, then secure the light base to the surface using the provided screws.

## 5. Wire Connection:

- Connect the **red wire** from the light fixture to the **positive (+) 12V DC wire** from your vehicle.
- Connect the **black wire** from the light fixture to the **negative (-) 12V DC wire** from your vehicle.
- Ensure all connections are secure and properly insulated.



Figure 2: Wiring connections for 12V DC. Red wire is positive, black wire is negative.

6. **Reattach Cover:** Once wiring is complete and secure, reattach the base cover.
7. **Restore Power:** Reconnect the 12V DC power supply.

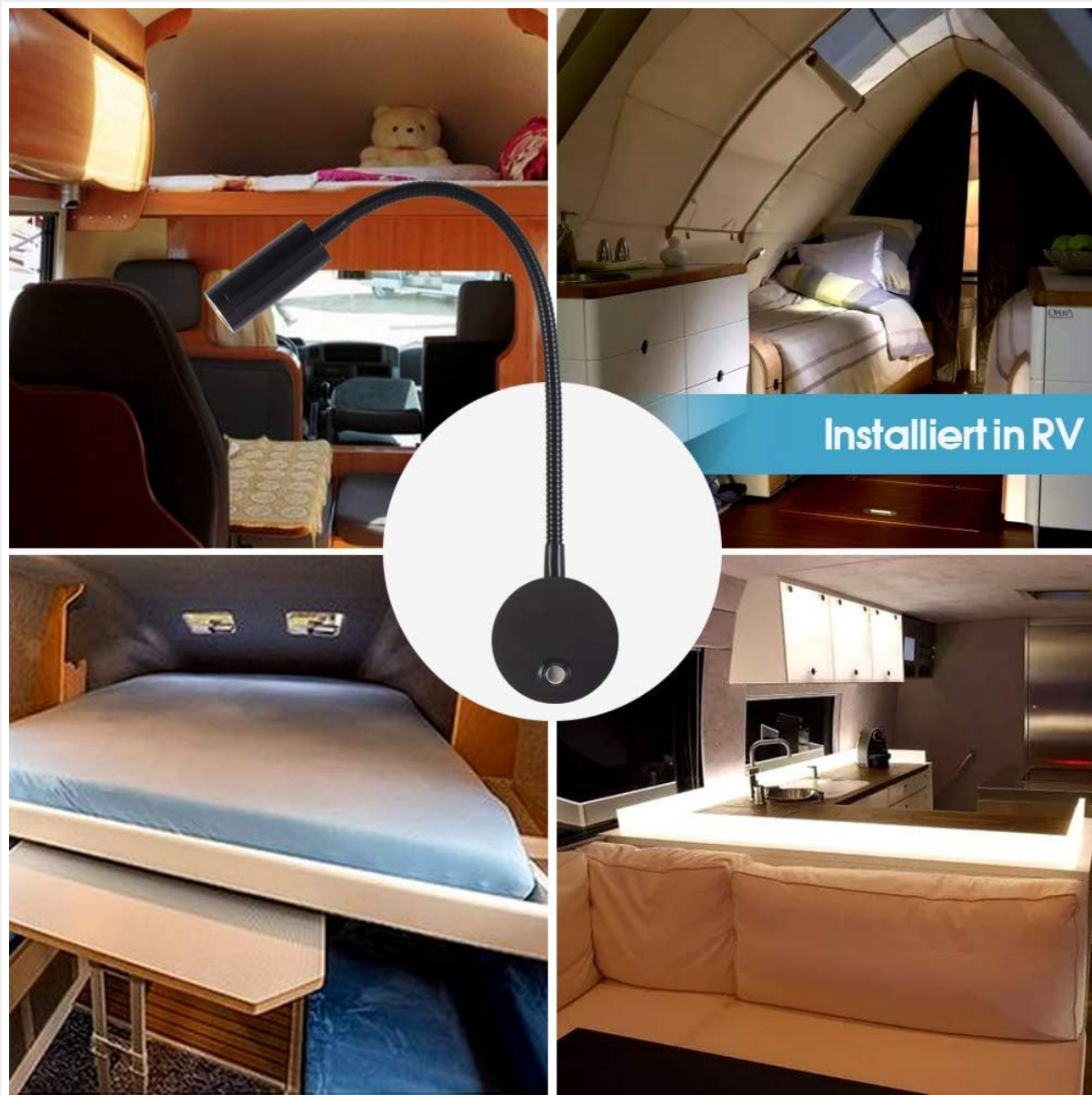


Figure 3: Examples of light installation in RVs.

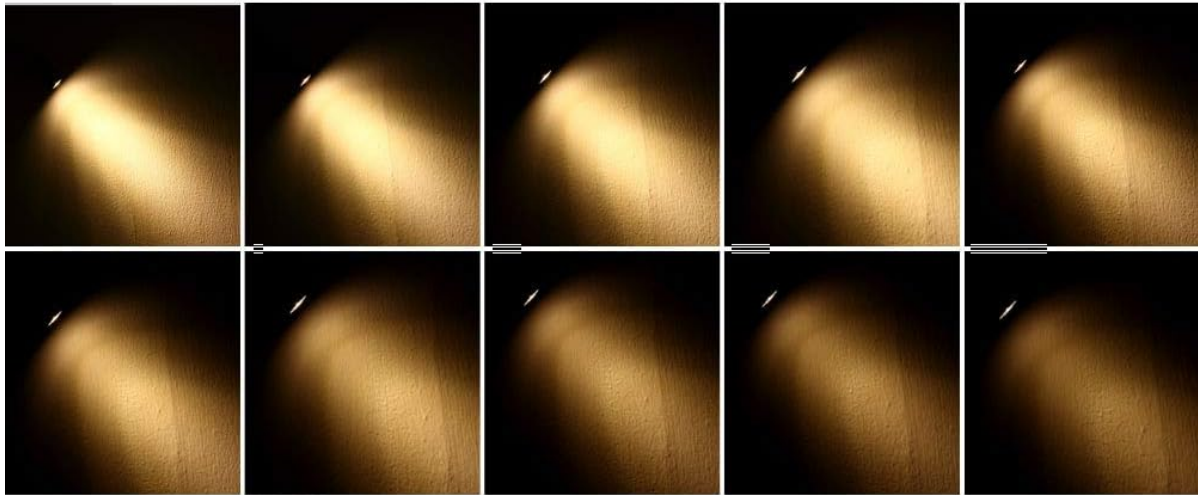
## OPERATING INSTRUCTIONS

---

### Light Control:

- **Turn On/Off:** Lightly touch the switch button on the base of the light to turn it on or off.
- **Adjust Brightness (Dimming):** Long press the switch button to adjust the brightness. The light will cycle through its dimming range (10-100%). Release the button when the desired brightness is reached.

# Stepless Touch Control



Stepless adjust brightness  
from 100-10%



Touch control



USB  
Charing Port



Dimming

**LIGHTLY TOUCH** to turn ON/OFF  
**LONG TOUCH** to adjust brightness

Figure 4: Touch control for light operation and dimming.

## USB Charging Port:

- The integrated USB port provides 5V/2A output for charging compatible devices such as smartphones or tablets.
- Simply plug your device's USB charging cable (not included) into the port located on the side of the light's base.



USB CABLE NOT INCLUDED



USB CHARGING PORT

Figure 5: USB Charging Port location.

#### Flexible Arm Adjustment:

- The flexible gooseneck arm allows for 360-degree rotation and adjustment of the light head.
- Gently bend and position the arm to direct the light precisely where needed.

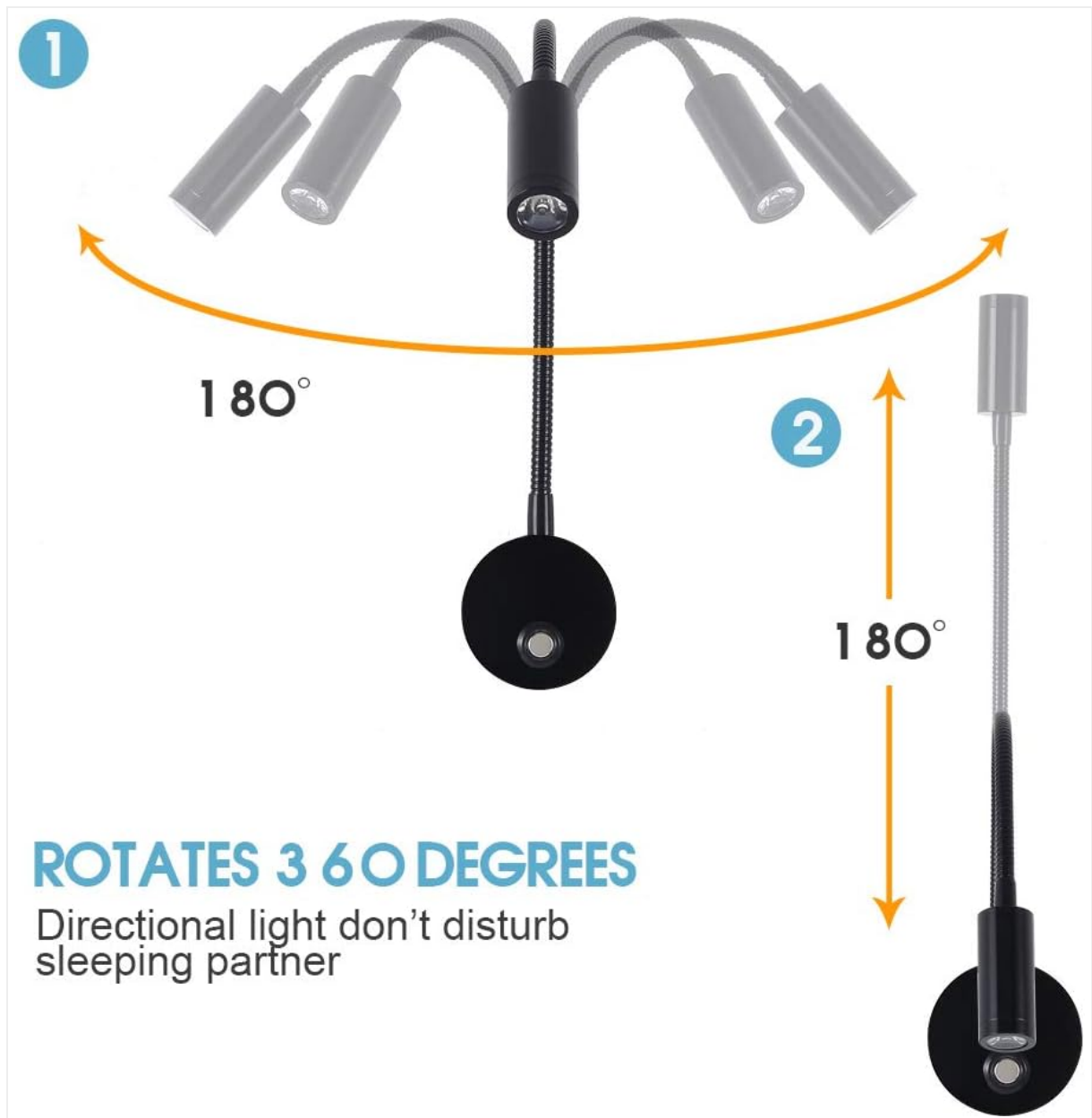


Figure 6: Flexible arm rotation and adjustment.

## MAINTENANCE

- **Cleaning:** Disconnect power before cleaning. Use a soft, dry cloth to wipe the surface of the light fixture. Do not use abrasive cleaners or solvents.
- **Inspection:** Periodically check wiring connections for tightness and signs of wear or damage.
- No user-serviceable parts are inside the light head or base.

## TROUBLESHOOTING

Problem	Possible Cause	Solution
Light does not turn on.	<ul style="list-style-type: none"> <li>◦ No power supply.</li> <li>◦ Incorrect wiring (reversed polarity).</li> <li>◦ Loose wire connections.</li> <li>◦ Faulty light fixture.</li> </ul>	<ul style="list-style-type: none"> <li>◦ Check 12V DC power supply to the fixture.</li> <li>◦ Verify red wire is connected to positive (+) and black to negative (-).</li> <li>◦ Ensure all wire connections are secure.</li> <li>◦ If issues persist, contact customer support.</li> </ul>

Problem	Possible Cause	Solution
Light flickers or is dim.	<ul style="list-style-type: none"> <li>Low voltage from power source.</li> <li>Loose wire connections.</li> <li>Faulty light fixture.</li> </ul>	<ul style="list-style-type: none"> <li>Check voltage of 12V DC power supply.</li> <li>Ensure all wire connections are secure.</li> <li>If issues persist, contact customer support.</li> </ul>
USB charging port not working.	<ul style="list-style-type: none"> <li>Device not compatible or cable faulty.</li> <li>No power to the light fixture.</li> <li>Faulty USB port.</li> </ul>	<ul style="list-style-type: none"> <li>Try a different device or USB cable.</li> <li>Ensure the light fixture is receiving 12V DC power.</li> <li>If issues persist, contact customer support.</li> </ul>

## SPECIFICATIONS

Feature	Detail
<b>Model Number</b>	WH-12VBD-008
<b>Operating Voltage</b>	DC 12V
<b>Wattage</b>	3W
<b>Lumen Output</b>	200 Lumens
<b>Current Draw</b>	0.2A (at 12V)
<b>Light Source Type</b>	LED
<b>Color Temperature</b>	3000K Warm White
<b>Dimmable</b>	Yes (Stepless Touch Control)
<b>USB Output</b>	5V/2A
<b>Material</b>	Machined Aluminum, Stainless Steel
<b>Finish</b>	Brushed Black
<b>Mounting Type</b>	Surface Mount, Hard-wired
<b>Product Dimensions (Base)</b>	2.4" Diameter x 1.18" Height
<b>Flexible Arm Length</b>	Approximately 11"
<b>Light Head Dimensions</b>	1" Diameter x 2.36" Length
<b>Item Weight</b>	1.19 pounds (for 2 units)

Feature	Detail
Indoor/Outdoor Usage	Indoor
Water Resistance Level	Not Water Resistant



Figure 7: Product dimensions.

## WARRANTY AND SUPPORT

For warranty information or technical support, please contact WisHomee customer service directly. Refer to your purchase documentation or the seller's website for specific contact details and warranty terms applicable to your region.

**Brand:** WisHomee

**Model:** WH-12VBD-008

