

## vidaXL 143342

# vidaXL Metal Garden Shed (Model 143342) - Instruction Manual

Anthracite, 257x298x178 cm

## 1. INTRODUCTION

Thank you for choosing the vidaXL Metal Garden Shed. This manual provides essential information for the safe assembly, operation, and maintenance of your new garden shed. Please read these instructions carefully before beginning assembly and retain them for future reference.

### 1.1 Safety Warnings

- **Assembly Required:** The shed must be fully assembled before use.
- **Sharp Edges:** Exercise caution when handling metal parts, as they may have sharp edges. Wear appropriate protective gloves during assembly.
- **Stable Surface:** Ensure the shed is assembled on a level and stable surface to prevent instability and potential hazards.
- **Anchoring:** Securely anchor the shed to the ground to prevent wind damage. Anchoring hardware may not be included and should be purchased separately based on your ground type.

## 2. PRODUCT OVERVIEW

The vidaXL Metal Garden Shed is designed for outdoor storage of tools, garden furniture, and other household items. Constructed from galvanized steel with a powder-coated surface, it offers durability and corrosion resistance against various weather conditions. It features double sliding doors for easy access and four ventilation openings to ensure proper air circulation.

### 2.1 Key Features

- Durable galvanized steel construction.
- Corrosion-resistant powder-coated finish.
- Double sliding doors for convenient entry and exit.

- Four ventilation slots (two front, two rear) for air circulation.
- Anthracite color.



Figure 1: The vidaXL Metal Garden Shed installed in a garden.

### 3. SETUP AND ASSEMBLY

Assembly of the vidaXL Metal Garden Shed requires careful attention to detail. It is recommended to have at least two people for assembly. Please ensure all parts are present before starting.

#### 3.1 Before You Begin

- **Unpack:** Carefully unpack all components and check against the parts list (not provided in this manual, refer to packaging).
- **Tools:** Gather necessary tools, typically including a screwdriver, wrench, and protective gloves.
- **Location:** Choose a flat, level, and stable area for installation, away from overhead power lines or potential

falling objects.

### 3.2 Assembly Steps (General Guidance)

1. **Base Frame Assembly:** Assemble the base frame components first. Ensure all corners are square and secure.
2. **Wall Panel Installation:** Attach the wall panels to the base frame, following the numerical or alphabetical order indicated in the detailed assembly instructions provided with the product.
3. **Roof Assembly:** Construct the roof frame and attach the roof panels. Ensure proper overlap for water resistance.
4. **Door Installation:** Install the double sliding doors onto their tracks. Ensure they slide smoothly.
5. **Ventilation Installation:** Ensure the ventilation openings are correctly positioned and clear of obstructions.
6. **Final Checks:** Verify all screws and fasteners are tightened. Check for stability and proper door operation.

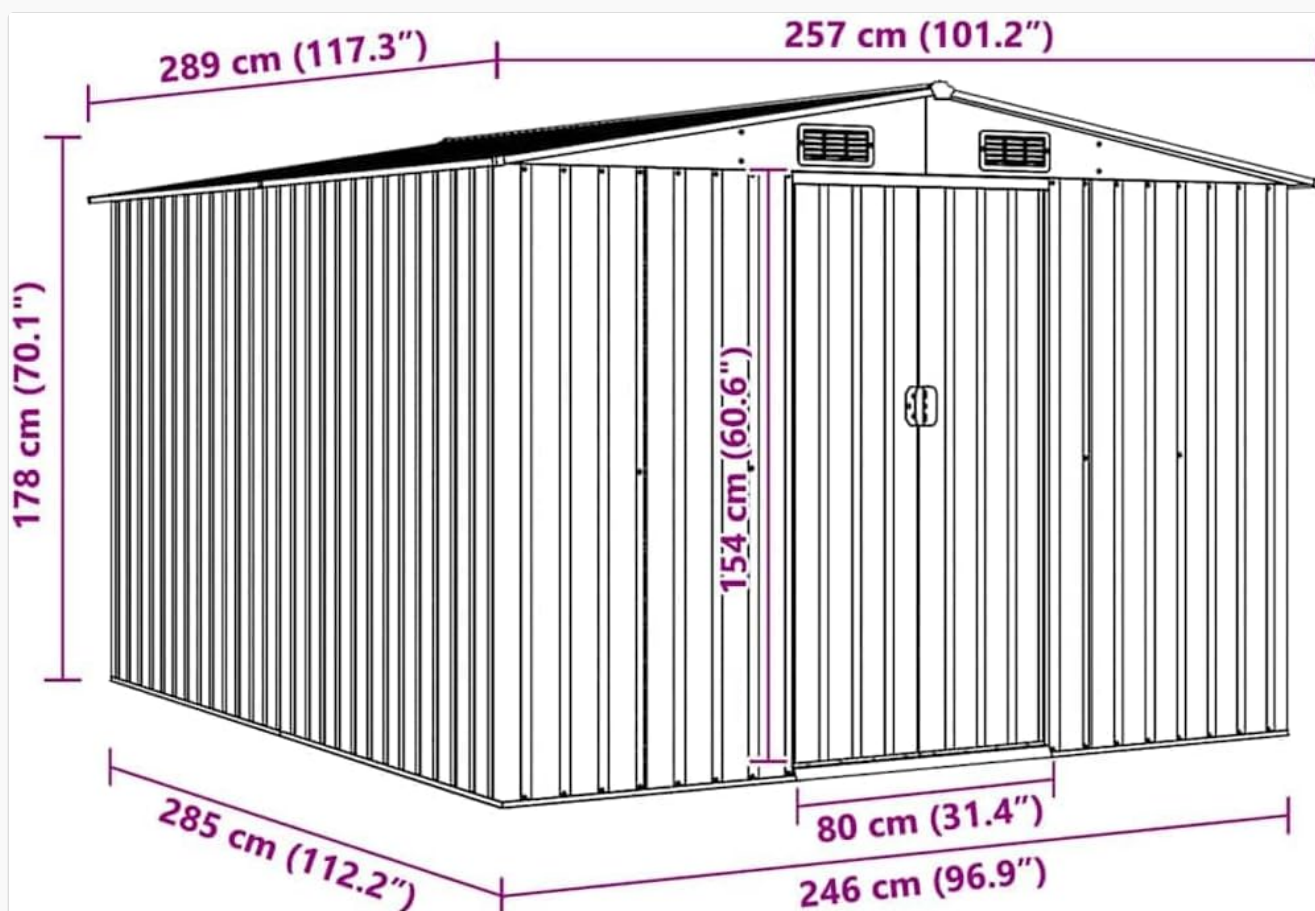


Figure 2: Dimensional diagram of the garden shed. Overall dimensions: 257 cm (width) x 298 cm (depth) x 178 cm (height).

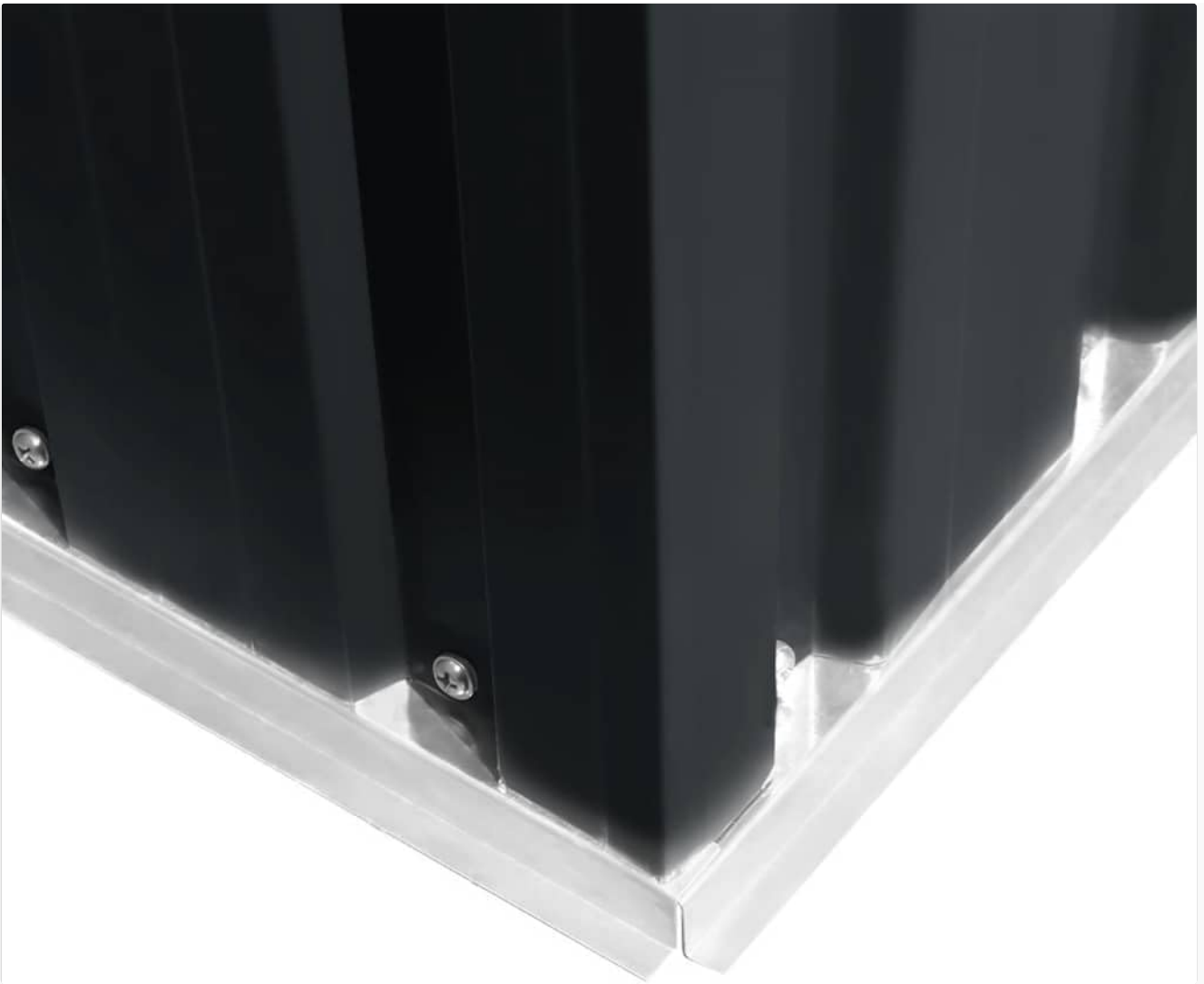


Figure 3: Detail of the shed's base corner, illustrating the connection between the wall panel and the base frame.

## 4. OPERATING INSTRUCTIONS

The garden shed is designed for straightforward operation.

### 4.1 Opening and Closing the Doors

The shed features double sliding doors. To open, gently slide one or both doors along their tracks. To close, slide them back until they meet in the center. Ensure no obstructions are in the door tracks.



Figure 4: Front view of the shed with its double sliding doors closed.



Figure 5: Detail of the door handle, designed for easy grip and operation.

## 4.2 Ventilation

The shed is equipped with four ventilation openings (two at the front, two at the rear) to promote air circulation and reduce condensation. Ensure these openings remain clear of debris or blockages.



Figure 6: Interior view showing the roof structure and one of the ventilation openings.

## 5. MAINTENANCE

Regular maintenance will help prolong the life and appearance of your garden shed.

- **Cleaning:** Clean the exterior surfaces periodically with a mild soap and water solution. Avoid abrasive cleaners or harsh chemicals that could damage the powder coating.
- **Door Tracks:** Keep the door tracks clean and free of dirt, leaves, or other debris to ensure smooth operation of the sliding doors.
- **Inspection:** Periodically inspect all fasteners and connections to ensure they remain tight. Re-tighten if necessary. Check for any signs of rust or damage, especially after severe weather.
- **Ventilation:** Ensure ventilation openings are not blocked to maintain proper airflow.

## 6. TROUBLESHOOTING

Here are some common issues and their potential solutions:

| Problem                               | Possible Cause                                                 | Solution                                                                                                                  |
|---------------------------------------|----------------------------------------------------------------|---------------------------------------------------------------------------------------------------------------------------|
| Doors stick or do not slide smoothly. | Debris in tracks, misaligned doors, loose fasteners.           | Clean door tracks. Check door alignment and adjust if needed. Tighten any loose fasteners on the door or frame.           |
| Water leakage inside the shed.        | Improperly sealed panels, damaged roof, uneven base.           | Inspect all panel overlaps and seals. Ensure roof panels are correctly installed. Verify the shed is on a level surface.  |
| Shed feels unstable or wobbly.        | Not properly anchored, loose frame connections, uneven ground. | Ensure the shed is securely anchored to the ground. Check and tighten all frame bolts. Confirm the base surface is level. |

## 7. SPECIFICATIONS

Detailed specifications for the vidaXL Metal Garden Shed, Model 143342:

- **Brand:** vidaXL
- **Model Number:** 143342
- **Color:** Anthracite (Dark Grey)
- **Material:** Galvanized Steel
- **Overall Dimensions (L x W x H):** 257.05 x 297.94 x 178.05 cm (101.2 x 117.3 x 70.1 inches)
- **Ground Surface Area (L x W):** 246 x 285 cm (96.9 x 112.2 inches)
- **Sliding Door Dimensions (W x H):** 80 x 154 cm (31.4 x 60.6 inches)
- **Ventilation Openings (each):** 23 x 10 cm (9.1 x 3.9 inches)
- **Number of Ventilation Openings:** 4
- **Water Resistance Level:** Waterproof
- **Frame Material:** Metal (Alloy Steel)
- **Panel Material Type:** Metal
- **Style:** Modern
- **Assembly:** Required

## 8. WARRANTY AND SUPPORT

For warranty information, product support, or to inquire about replacement parts, please contact vidaXL customer service directly. You can find more information and contact details on the official vidaXL website or through your retailer.

Visit the official vidaXL store: [vidaXL Store](#)

