

LC-Power LC-35U3-RAID-2

LC-Power LC-35U3-RAID-2 Hard Drive Enclosure User Manual

Model: LC-35U3-RAID-2

1. INTRODUCTION

This manual provides detailed instructions for the installation, configuration, and operation of the LC-Power LC-35U3-RAID-2 Hard Drive Enclosure. This device is designed to house two 3.5-inch SATA hard drives, offering various RAID modes for data management and protection. Please read this manual thoroughly before use to ensure proper setup and functionality.



Figure 1: LC-Power LC-35U3-RAID-2 Hard Drive Enclosure, front-side view with stand.

2. PACKAGE CONTENTS

Verify that all items listed below are present in your package. If any items are missing or damaged, please contact your retailer.

- 1 x LC-Power LC-35U3-RAID-2 Hard Drive Enclosure
- 1 x Stand
- 1 x USB Cable (USB-A to USB-A)
- 1 x External Power Supply
- 1 x Mounting Material (screws, screwdriver)
- 1 x User Manual (this document)



Figure 2: Product packaging, showing the enclosure and its features.

3. FEATURES

- Supports two 8.89cm/3.5" SATA hard drives.
- RAID function support: RAID 0, RAID 1, Large, and Normal modes.
- USB 3.2 Gen 1x1 interface (USB-A connector).
- UASP support for enhanced performance (from Windows 8 onwards).
- Chipset for SATA 5Gb/s (SATA I/II/III).
- Durable aluminum housing for efficient heat dissipation.
- Integrated fan controller for adjustable cooling.
- Plug'n'Play functionality.
- Nominal data transfer rate up to 5Gb/s.
- System compatibility: Windows 7 or higher, Mac OS 10.8 or higher.

4. SETUP AND INSTALLATION

4.1. Hard Drive Installation

1. **Open the Enclosure:** Carefully slide open the enclosure to access the internal drive bays. Refer to the product diagram for the correct opening mechanism.
2. **Install Hard Drives:** Insert your 3.5-inch SATA hard drives into the designated bays (HDD1 and HDD2). Ensure they are securely seated into the SATA connectors.
3. **Secure Drives:** Use the provided mounting screws and screwdriver to secure the hard drives within the enclosure.
4. **Close Enclosure:** Slide the enclosure cover back into place until it clicks or is firmly closed.



Figure 3: Internal drive tray for 3.5-inch SATA hard drives.

4.2. Connecting to Power and PC

1. **Connect Power:** Connect the external power supply to the DC 12V input port on the enclosure's rear panel. Then, plug the power adapter into a wall outlet.
2. **Connect USB:** Use the provided USB-A to USB-A cable to connect the enclosure's USB 3.2 Gen 1x1 port to an available USB port on your computer.
3. **Positioning:** Place the enclosure on a stable surface, preferably using the included stand for optimal airflow and stability.



Figure 4: Rear view of the enclosure, showing the USB port, power input, and fan.

5. RAID CONFIGURATION

The LC-35U3-RAID-2 supports multiple RAID modes. **Before configuring RAID, ensure no critical data is on the installed hard drives, as this process will erase all data.**

5.1. Understanding RAID Modes

- **Normal:** Each hard drive operates independently as a separate volume.
- **Large (JBOD):** Combines both hard drives into a single, large volume. Data is written sequentially across drives. No redundancy.
- **RAID 0 (Striping):** Combines both hard drives into a single volume for maximum performance. Data is split and written across both drives simultaneously. No redundancy; failure of one drive results in data loss.
- **RAID 1 (Mirroring):** Creates an exact copy of data on both hard drives. Provides data redundancy; if one drive fails, data can be recovered from the other. Capacity is limited to the size of the smallest drive.

5.2. Setting RAID Mode

1. **Power Off:** Ensure the enclosure is powered off and disconnected from your computer.

2. **Set DIP Switches:** On the rear panel, locate the RAID setting DIP switches. Adjust these switches according to the desired RAID mode as indicated on the enclosure. Refer to Figure 5 for switch positions.
3. **Press Reset Button:** With the enclosure still powered off, use a small pointed object (like a paperclip) to press and hold the "RESET" button.
4. **Power On:** While holding the RESET button, power on the enclosure. Continue holding the RESET button for approximately 5-10 seconds until the indicator lights change or flash, then release.
5. **Connect to PC:** Connect the enclosure to your computer via USB.
6. **Initialize and Format:** For new RAID configurations or drives, you will need to initialize and format the new volume through your operating system's Disk Management utility (Windows) or Disk Utility (Mac OS). Follow your OS's instructions for creating new partitions and formatting.



Figure 5: Detailed view of the rear panel, highlighting RAID setting DIP switches and the RESET button.



Figure 6: Top panel indicators for HDD activity and RAID mode labels.

6. OPERATION

6.1. Power On/Off

After connecting the power and USB cables, press the "ON/OFF" switch on the rear panel to power on the enclosure. The power indicator light will illuminate. To power off, press the switch again. Always safely eject the drive from your operating system before powering off to prevent data corruption.

6.2. Fan Control

The enclosure features a fan with adjustable speed settings. Use the fan control switch on the rear panel to select your desired fan speed (low, medium, high) or turn it off. Adjust the fan speed based on the operating temperature of your hard drives and ambient conditions.

6.3. Drive Activity Indicators

The enclosure has LED indicators for HDD1 and HDD2 on the top panel. These lights will illuminate when the respective drive is active (reading or writing data).

6.4. System Compatibility

The LC-35U3-RAID-2 is compatible with Windows 7 or higher and Mac OS 10.8 or higher. For optimal performance and UASP support, ensure your operating system is Windows 8 or newer.

7. MAINTENANCE

- **Cleaning:** Use a soft, dry cloth to clean the exterior of the enclosure. Do not use liquid cleaners or solvents. Ensure ventilation holes are free from dust to maintain proper airflow.
- **Ventilation:** Ensure the enclosure is placed in a well-ventilated area, away from direct sunlight or heat sources, to prevent overheating.
- **Cable Management:** Periodically check all cable connections (power and USB) to ensure they are secure and not damaged. A loose USB cable can lead to connection drops.
- **Firmware Updates:** Check the LC-Power website periodically for any available firmware updates for your device.

8. TROUBLESHOOTING

- **Enclosure not recognized by PC:**
 - Ensure the power adapter is securely connected and the enclosure is powered on.
 - Verify the USB cable is firmly connected to both the enclosure and the computer. Try a different USB port or cable.
 - Check your operating system's Disk Management (Windows) or Disk Utility (Mac OS) to see if the drives are detected but uninitialized or unformatted.
 - If you changed RAID modes, ensure you performed the RESET procedure correctly and initialized/formatted the volume.
- **Slow data transfer speeds:**
 - Ensure you are connected to a USB 3.0/3.1/3.2 port on your computer for optimal speeds.
 - Verify that UASP is enabled (Windows 8 or higher).
 - Check the health of your hard drives.
- **Drives not spinning up or making unusual noises:**
 - Ensure the power supply is functioning correctly.
 - Check that the hard drives are properly seated in their bays.
 - If noises persist, the hard drive itself may be faulty.
- **Intermittent connection drops:**
 - Ensure the USB cable is not loose or damaged. Try a different, high-quality USB-A to USB-A cable.
 - Avoid placing the enclosure near strong electromagnetic interference sources.
- **Auto-Sleep function not working as expected:**
 - Ensure your operating system's power management settings are not interfering with the enclosure's sleep function.
 - Some operating systems (e.g., certain Linux distributions) may have limited or no support for the enclosure's auto-sleep feature.

9. SPECIFICATIONS

Feature	Detail
Model	LC-35U3-RAID-2
Brand	LC-Power
Material	Aluminum
Compatible Devices	Personal Computer
Hard Disk Form Factor	3.5 Inches
Max Number of Supported Devices	2
Data Transfer Rate	5 Gigabits Per Second (USB 3.2 Gen 1x1)
RAID Modes	RAID 0, RAID 1, Large (JBOD), Normal
Hardware Interface	USB (USB-A)
Hardware Platform	Mac, Windows
Item Weight	0.86 Kilograms (1.89 pounds)
Product Dimensions	Approx. 3.5"L x 3.5"W x 3.5"H (Enclosure only)
Color	Black


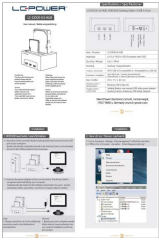
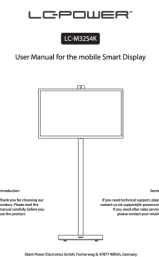



10. WARRANTY AND SUPPORT

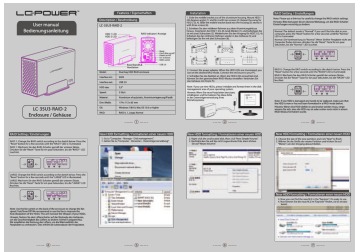
LC-Power products are designed and manufactured to the highest quality standards. For information regarding warranty terms and conditions, please refer to the warranty card included with your product or visit the official LC-Power website.

For technical support, troubleshooting assistance, or to inquire about replacement parts, please contact LC-Power customer service through their official website or the contact information provided in your product documentation.

Manufacturer: LC-Power

Website: www.lc-power.com (Please check for the most current contact information and support resources.)

	<p>LC-DOCK-U3-III USB 3.0 Dual Bay Docking Station User Manual</p> <p>User manual for the LC-DOCK-U3-III USB 3.0 Dual Bay Docking Station, detailing setup, features, and hardware cloning functionality for 2.5" and 3.5" SATA hard drives and SSDs.</p>
	<p>LC-DOCK-U3-HUB HDD/SSD Docking Station and USB 3.0 Hub User Manual</p> <p>User manual for the LC-DOCK-U3-HUB, detailing installation and features of the 2-bay HDD/SSD docking station with a 3-port USB 3.0 hub and 1:1 cloning functionality. Includes setup, specifications, and operational guides.</p>
	<p>LC-Power LC-M32S4K User Manual: Smart Display Setup and Operation</p> <p>Comprehensive user manual for the LC-Power LC-M32S4K mobile smart display, covering safety precautions, product introduction, installation, adjustment, instructions, and specifications.</p>
	<p>LC-POWER LC-M32S4K Mobile Smart Display User Manual</p> <p>Comprehensive user manual for the LC-POWER LC-M32S4K mobile smart display, covering safety, product introduction, installation, adjustment, instructions, and specifications.</p>
	<p>LC-Power LC-CC-120/240/360-LiCo-ARGB CPU Cooler Installation Guide</p> <p>Comprehensive installation guide for the LC-Power LC-CC-120/240/360-LiCo-ARGB series of liquid CPU coolers, detailing component identification, compatibility with Intel and AMD CPU sockets, mounting procedures, and fan/pump connections.</p>
	<p>LC Power LC-CC-120-W4 AERA Series CPU Cooler</p> <p>Information about the LC Power LC-CC-120-W4 CPU cooler from the AERA series, featuring heatpipes, a 120mm fan, and compatibility with Intel and AMD sockets. Includes technical specifications and features.</p>

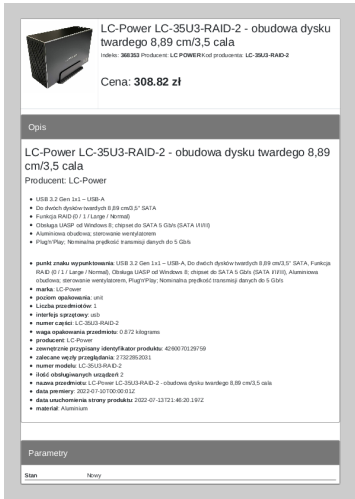


[pdf] User Manual

User manual LC 35U3 RAID 2 Power 180821 lc power 2024 11 |||

...

lang: score:34 filesize: 532.53 K page_count: 1 document date: 2024-11-19

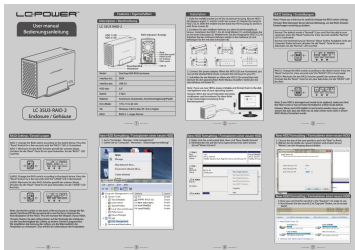


[pdf]

LC Power 35U3 RAID 2 obudowa dysku twardego 8 89 cm 3 5 cala Sklep internetowy stylem pl lc power 35u3 raid 368353 upload files product |||

LC-Power **LC-35U3-RAID-2** - obudowa dysku twardego 8,89 cm/3,5 cala Indeks: 368353 Producent: LC POWER Kod producenta: **LC-35U3-RAID-2** Cena: 308.82 zł
Opis LC-Power **LC-35U3-RAID-2** - obudowa dysku twardego 8,89 cm/3,5 cala
Producent: LC-Power USB 3.2 Gen 1x1 USB-A Do dwch dysk w twardech 8,89 cm/3,5 S...

lang:sw score:33 filesize: 110.57 K page_count: 2 document date: 2024-06-07



[pdf] User Manual

K35272U3S~ A4 LC 35U3 RAID 2 manual 180821 lc power fileadmin user upload Handbuecher Festplattengehaeuse |||

...

lang:sw score:28 filesize: 2.92 M page_count: 1 document date: 2021-08-18



[pdf] Specifications Datasheet

LC 35U3 RAID 2 Power Technical specification Suitable to USB Gen 2x 3 5 SATA HDD 1x1 1x A
Required PC connection Dimension product datasheet lc power fileadmin user upload english enclosures raid |||

...

lang:sw score:17 filesize: 858.02 K page_count: 1 document date: 2022-01-28