



Manuals.plus /

› SXA /

› SXA Electric Car Polisher Machine User Manual

**SXA 3521209582--64244320**

# SXA Electric Car Polisher Machine User Manual

Model: 3521209582--64244320

## INTRODUCTION

---

This manual provides essential instructions for the safe and effective operation, maintenance, and troubleshooting of your SXA Electric Car Polisher Machine. Please read this manual thoroughly before initial use and retain it for future reference.

## SAFETY INSTRUCTIONS

---

Always observe basic safety precautions when using electrical appliances to reduce the risk of fire, electric shock, and personal injury.

- **Read all instructions:** Familiarize yourself with the controls and proper use of the tool.
- **Wear appropriate safety gear:** Always wear safety glasses, gloves, and a dust mask when operating the polisher.
- **Keep work area clean:** Cluttered areas invite accidents.
- **Avoid dangerous environments:** Do not use power tools in damp or wet locations, or expose them to rain.
- **Keep children away:** Do not let children operate the polisher.
- **Secure workpiece:** Always secure the item being polished to prevent movement.
- **Avoid accidental starting:** Ensure the switch is in the OFF position before plugging in the tool.
- **Do not overreach:** Maintain proper footing and balance at all times.
- **Disconnect power:** Always unplug the polisher from the power source before making adjustments, changing accessories, or storing it.
- **Use correct accessories:** Only use accessories recommended by the manufacturer.
- **Inspect tool before use:** Check for damaged parts, misalignment, or binding of moving parts.

## PACKAGE CONTENTS

---

Verify that all items listed below are included in your package:

- 1 x SXA Electric Car Polisher Machine
- 2 x Flat Sponge Plates
- 2 x Wave Sponge Plates
- 1 x Self-adhesive Disc
- 2 x Fiber Covers
- 4 x Wool Fleece Covers
- 1 x Wool Ball
- 1 x Handle (Auxiliary Handle)
- 1 x Wrench



**Figure 1: Package Contents.** This image displays the SXA Electric Car Polisher Machine along with all its included accessories: two flat sponge plates, two wave sponge plates, one self-adhesive disc, two fiber covers, four wool fleece covers, one wool ball, one auxiliary handle, and a wrench.

## PRODUCT OVERVIEW

The SXA Electric Car Polisher Machine is designed for various polishing, sanding, and waxing tasks. It features an ergonomic design and adjustable speed for versatile applications.



**Figure 2: Polisher Components.** This diagram labels the key parts of the polisher: Machine head soft rubber wrapping, Cooling air inlet, Auxiliary handle, Lock the power button, Soft rubber handle, Switch, Stepless speed regulation, and Self-adhesive disc.

### Key Features:

- **High Performance Motor:** 700W motor provides efficient operation with low noise.
- **Adjustable Speed:** Stepless speed regulation from 600 to 3700 RPM for various tasks.
- **Ergonomic Design:** Detachable auxiliary handle and soft rubber grip for comfortable use.
- **Efficient Heat Dissipation:** Heat radiation holes prevent overheating.
- **Quick Accessory Change:** Self-adhesive grinding disc for easy attachment and removal of pads.
- **Versatile Applications:** Suitable for car polishing, floor waxing, metal descaling, furniture waxing, and more.

### SETUP

---

1. **Attach the Auxiliary Handle:** Screw the auxiliary handle into the designated threaded port on the side of the polisher until secure.



**Figure 3: Polisher with Auxiliary Handle.** This image shows the polisher with the auxiliary handle properly installed, providing a stable grip for operation.

- 2. Attach the Self-adhesive Disc:** The polisher comes with a self-adhesive disc already installed. Ensure it is firmly attached to the polisher's base.
- 3. Attach Polishing Pad/Cover:** Select the appropriate sponge plate, fiber cover, or wool fleece cover for your task. Align it with the self-adhesive disc and press firmly to secure. The self-adhesive design allows for quick changes.

# Self-adhesive disc

Self-adhesive design, it is more convenient and quick to replace the grinding disc



**Figure 4: Attaching a Polishing Pad.** This close-up view demonstrates how to attach a polishing pad to the self-adhesive disc, highlighting the ease of replacement.

4. **Connect to Power:** Ensure the polisher's switch is in the OFF position before plugging the power cord into a suitable electrical outlet (110V/220V, depending on model specifications).

## OPERATING INSTRUCTIONS

---

1. **Power On:** Press the main switch to turn on the polisher.
2. **Lock Power Button (Optional):** For continuous operation, press the lock button located near the switch. Press the switch again to release the lock.
3. **Adjust Speed:** Use the stepless speed regulation knob to adjust the rotation speed from 600 to 3700 RPM. Turn the knob clockwise to increase speed and counter-clockwise to decrease speed. Select a speed appropriate for the material and task.

# STEPLESS SPEED CHANGE, FREE EXCHANGE

Push switch, one key lock



Stepless speed  
control knob

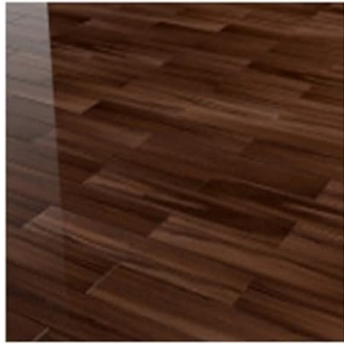
Figure 5: Stepless Speed Control. This image highlights the stepless speed control knob, allowing precise adjustment of the polisher's RPM.

#### 4. Application:

- **Polishing/Waxing:** Apply a small amount of polishing compound or wax directly to the pad or the surface. Start the polisher at a low speed and gradually increase as needed. Move the polisher in overlapping passes, maintaining even pressure.
- **Sanding:** Use appropriate sanding pads. Start at a lower speed and apply light, even pressure.
- **General Use:** The polisher is suitable for various tasks including car polishing, floor waxing, metal descaling, furniture waxing, and jewelry polishing.

# ALL-IN-ONE POLISHING

I'm not just a car polisher!



Floor Care



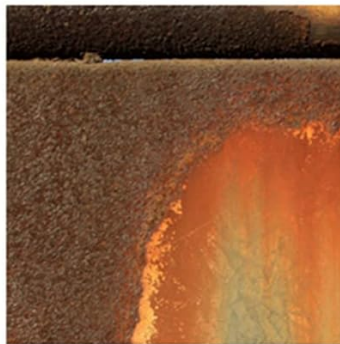
furniture waxing



jewelry polishing



woodworking sanding



Metal rust removal



leather shoes waxing

**Figure 6: Versatile Applications.** This collage illustrates the wide range of uses for the SXA Electric Car Polisher, including floor care, furniture waxing, jewelry polishing, woodworking sanding, metal rust removal, and leather shoe waxing.

5. **Power Off:** When finished, release the lock button (if engaged) and press the main switch to turn off the polisher. Unplug the tool from the power outlet.

## MAINTENANCE

- **Cleaning:** After each use, wipe down the polisher with a clean, damp cloth. Do not use harsh chemicals or abrasive cleaners.
- **Pad Care:** Clean used polishing pads according to their specific instructions. Allow them to dry completely before storage.
- **Storage:** Store the polisher and its accessories in a clean, dry place, out of reach of children.
- **Cord Inspection:** Regularly inspect the power cord for any signs of damage. If damaged, have it replaced by a qualified technician.
- **Ventilation:** Ensure the cooling air inlets are free from dust and debris to maintain proper heat dissipation.

## TROUBLESHOOTING

---

Problem	Possible Cause	Solution
Polisher does not start	No power supply; Switch not engaged	Check power outlet and cord; Ensure switch is fully pressed
Excessive vibration	Pad not centered; Damaged pad; Loose auxiliary handle	Re-center pad; Replace damaged pad; Tighten auxiliary handle
Overheating	Blocked ventilation; Prolonged heavy use	Clear air inlets; Allow tool to cool down; Reduce load
Poor polishing results	Incorrect pad; Insufficient compound; Wrong speed setting	Use appropriate pad; Apply more compound; Adjust speed

## SPECIFICATIONS

---

- **Model:** 3521209582--64244320
- **Power:** 700W
- **Rotation Speed:** 600-3700 RPM (Steplessly adjustable)
- **Self-adhesive Grinding Disc Diameter:** 125mm (4.92 inches)
- **Voltage:** 110V/220V (Model dependent)
- **Weight (including packaging):** 1.5 kg
- **Packaging Size:** 26cm x 13cm x 21.5cm
- **Manufacturer:** SXA
- **Date First Available:** July 8, 2022



**Figure 7: Product Dimensions and Specifications.** This image provides a visual representation of the polisher's dimensions (19cm width, 21cm height, 125mm disc diameter) and lists key specifications such as rated power (700W), weight (1.5kg), machine speed (600-3700r/min), and voltage (110V/220V).

## WARRANTY AND SUPPORT

This product comes with a standard manufacturer's warranty. For specific warranty details, please refer to the documentation included with your purchase or contact SXA customer support.

For technical assistance, troubleshooting, or to inquire about replacement parts, please contact your retailer or the manufacturer directly.