

Boytond aaaaaa112

Boytond Wireless Earbuds User Manual

Model: aaaaaa112

1. INTRODUCTION

Thank you for choosing Boytond Wireless Earbuds. These earbuds are designed to provide a high-quality audio experience with advanced features such as Bluetooth 5.2 connectivity, touch controls, and CVC8.0 noise reduction for clear calls. This manual will guide you through the setup, operation, and maintenance of your new earbuds.

For optimal performance, please read this manual thoroughly before use and retain it for future reference.

2. PACKAGE CONTENTS

Please check the package for the following items:

- Boytond Wireless Earbuds (Left and Right)
- Charging Case
- USB Type-C Charging Cable
- Ear Tips (Small, Medium, Large)
- User Manual

3. PRODUCT OVERVIEW



Figure 3.1: Boytond Wireless Earbuds and Charging Case with LED display.



Figure 3.2: LED Power Display showing battery levels for the charging case and individual earbuds (L and R).



Figure 3.3: Dimensions of the earbuds and charging case, highlighting their compact and portable design.

Key Features:

- **Bluetooth 5.2:** Ensures stable and efficient wireless connection.
- **LED Power Display:** Shows remaining battery capacity of the charging box and individual earbuds.
- **Large Capacity Battery:** Up to 12 hours of music/talk time per charge, and up to 50 hours total with the charging case.
- **Automatic Pairing:** Earbuds automatically connect to your device after initial setup.
- **CVC8.0 Noise Reduction:** Enhances call clarity by reducing ambient noise.
- **IPX7 Waterproof:** Resistant to sweat and rain, suitable for sports and outdoor activities.
- **Touch Control:** Intuitive touch sensors for managing music, calls, and voice assistant.

4. SETUP

4.1 Charging the Earbuds and Case

Before first use, fully charge the earbuds and the charging case.

1. Place the earbuds into the charging case. Ensure they are correctly seated in their respective L/R slots.
2. Connect the USB Type-C charging cable to the charging port on the case and the other end to a USB power adapter (not included) or a computer's USB port.
3. The LED display on the charging case will show the charging progress. The middle number indicates the charging box's capacity, and the L/R bars indicate the earbuds' charge.
4. A full charge for the earbuds takes approximately 1.5 hours. The charging case takes longer depending on its initial charge level.



Figure 4.1: Illustration of Type-C charging for the earbuds and charging case.

4.2 Pairing with Your Device

The earbuds support automatic pairing after the initial setup.

1. Ensure the earbuds are charged.
2. Open the charging case. The earbuds will automatically power on and enter pairing mode.
3. On your device (smartphone, tablet, etc.), enable Bluetooth.
4. Search for available Bluetooth devices. You should see "YYK-590" (or similar, as seen in image) in the list.
5. Select "YYK-590" to connect. Once connected, you will hear a confirmation tone, and the earbuds will be ready for use.
6. For subsequent uses, simply take the earbuds out of the case, and they will automatically connect to the last paired device.

NEW Bluetooth5.2

Using the latest Bluetooth 5.2, avoid signal interruption, achieve more stable transmission.

AUTO PAIRING

Take the earbuds out of the case, it will automatically turn on and connect to the phone.



Figure 4.2: Diagram showing the automatic pairing process when earbuds are removed from the charging case.

Note: If the earbuds do not pair, try turning off and on your device's Bluetooth, or reset the earbuds (refer to Troubleshooting section).

5. OPERATING INSTRUCTIONS

5.1 Touch Controls

The earbuds feature intuitive touch controls on their outer surface. The functions are as follows:

Action	Function
Single Tap (L or R)	Play / Pause Music, Answer / Hang Up Call
Double Tap (L)	Previous Song
Double Tap (R)	Next Song
Triple Tap (L)	Volume Down
Triple Tap (R)	Volume Up

Action	Function
Long Press (2 seconds)	Reject Call, Activate Voice Assistant (Siri, Google Assistant)

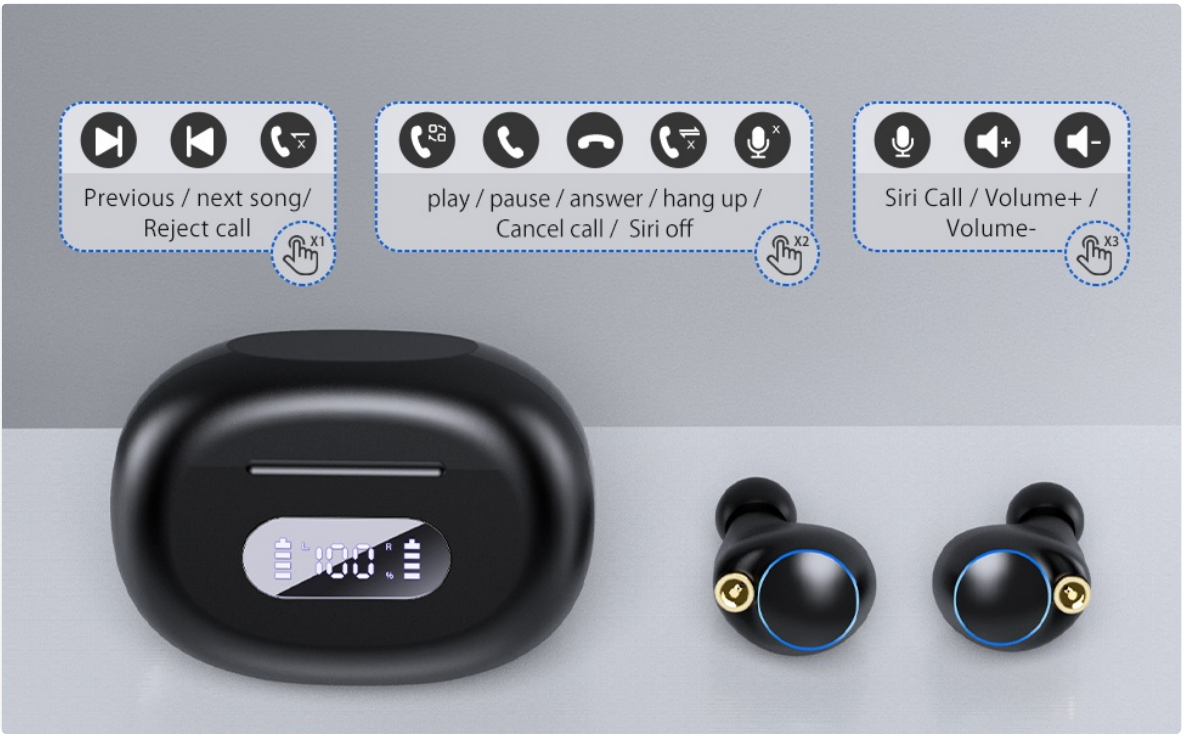


Figure 5.1: Visual guide to touch control gestures and their corresponding functions.

5.2 Wearing the Earbuds

For optimal sound quality and comfort, choose the correct size ear tips and ensure a snug fit.

1. Select the ear tips (S, M, L) that best fit your ear canal.
2. Gently insert the earbud into your ear canal and twist slightly to secure it.
3. Ensure the earbud is comfortable and forms a good seal to maximize bass response and noise isolation.

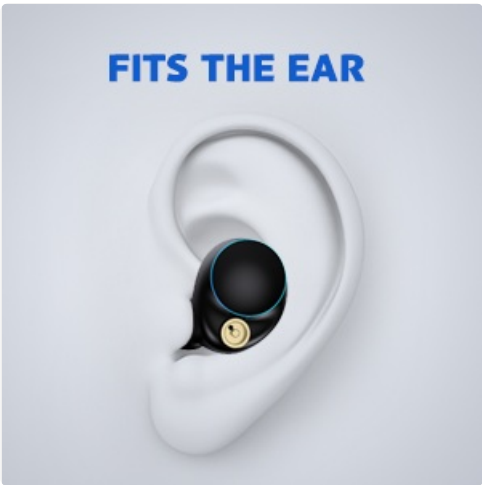


Figure 5.2: Diagram illustrating the proper fit of the earbud in the ear.

6. MAINTENANCE

6.1 Cleaning

- Regularly clean the earbuds and charging case to prevent dirt and earwax buildup.
- Use a soft, dry, lint-free cloth to wipe the surfaces of the earbuds and charging case.
- For ear tips, remove them from the earbuds and clean with a mild soap solution if necessary, then rinse thoroughly and dry completely before reattaching.
- Do not use abrasive cleaners or solvents.

6.2 Storage

- When not in use, store the earbuds in their charging case to protect them and keep them charged.
- Store in a cool, dry place, away from extreme temperatures and direct sunlight.

6.3 Water Resistance (IPX7)

The earbuds are IPX7 waterproof, meaning they can withstand submersion in up to 1 meter of water for 30 minutes. This makes them suitable for workouts and light rain. However, they are not designed for swimming or showering.

- Do not charge the earbuds or case if they are wet.
- Ensure the charging port is dry before connecting the charging cable.



Figure 6.1: Illustration of the earbuds' IPX7 waterproof rating, suitable for use during exercise or in light rain.

7. TROUBLESHOOTING

If you encounter any issues with your earbuds, please refer to the following common problems and solutions:

Problem	Possible Solution
Earbuds not pairing with device.	<ul style="list-style-type: none"> ◦ Ensure earbuds are charged and out of the case. ◦ Turn off and on Bluetooth on your device. ◦ Forget "YYK-590" from your device's Bluetooth list and re-pair. ◦ Reset the earbuds (refer to manufacturer's specific reset instructions if available, otherwise, place in case, close, open, and try re-pairing).

Problem	Possible Solution
Only one earbud working.	<ul style="list-style-type: none">◦ Ensure both earbuds are charged.◦ Place both earbuds back into the charging case, close the lid, wait a few seconds, then open and take them out again.◦ Try resetting the earbuds.
Low volume or poor sound quality.	<ul style="list-style-type: none">◦ Adjust volume on both your device and the earbuds.◦ Ensure ear tips are the correct size and provide a good seal.◦ Clean any earwax or debris from the earbud nozzles.
Charging case not charging.	<ul style="list-style-type: none">◦ Check the USB Type-C cable and power adapter. Try a different cable or adapter.◦ Ensure the charging port on the case is clean and free of debris.

8. SPECIFICATIONS

Feature	Detail
Model Number	aaaaa112
Bluetooth Version	5.2
Earbud Battery Life	Up to 12 hours (music/talk time)
Total Playtime with Case	Up to 50 hours
Charging Time (Earbuds)	Approx. 1.5 hours
Charging Port	USB Type-C
Water Resistance Rating	IPX7
Noise Reduction	CVC8.0 (for calls)
Control Method	Touch Control
Ear Placement	In Ear
Item Weight	4.2 ounces (total package)
Manufacturer	Boytond

9. WARRANTY AND SUPPORT

Boytond products are manufactured with high-quality standards. For any issues or inquiries, please contact our customer support team.

- **Customer Support:** Refer to the contact information provided on the product packaging or the official Boytond website.

- **Warranty Information:** Specific warranty terms may vary. Please retain your proof of purchase for warranty claims.

We are committed to providing excellent service and support for your Boytond Wireless Earbuds.