

Manuals+

[Q & A](#) | [Deep Search](#) | [Upload](#)

manuals.plus /

› [MLMLANT](#) /

› [MLMLANT Steam Cleaner User Manual](#)

MLMLANT B0B5ZP6QB2

MLMLANT Steam Cleaner User Manual

Model: B0B5ZP6QB2

INTRODUCTION

Thank you for choosing the MLMLANT 1500W Multipurpose Steam Cleaner. This appliance is designed to provide powerful, chemical-free cleaning for a variety of surfaces in your home. Please read this manual thoroughly before operating the steam cleaner to ensure safe and efficient use. Keep this manual for future reference.

IMPORTANT SAFETY INSTRUCTIONS

When using electrical appliances, basic precautions should always be followed to reduce the risk of fire, electric shock, and personal injury.

- Always ensure the power supply matches the voltage specified on the appliance.
- Do not leave the steam cleaner unattended while plugged in or operating.
- Keep out of reach of children and pets.
- Do not direct steam at people, animals, or electrical appliances. Steam is very hot and can cause burns.
- Use only distilled or demineralized water to prevent mineral buildup and prolong the life of the appliance.
- Never add cleaning solutions, perfumes, oils, or other chemicals to the water tank, as this can damage the unit and void the warranty.
- Unplug the appliance from the power outlet before filling, emptying, or cleaning.
- Allow the unit to cool completely before storing.
- Do not operate the appliance with a damaged cord or plug.
- Do not immerse the steam cleaner in water or other liquids.



Image: The MLMLANT Steam Cleaner in use, demonstrating its safe operation around children and pets due to its chemical-free steam cleaning capability. The image emphasizes superheated steam up to 248°F/120°C, killing 99% of bacteria and viruses without chemicals.

PACKAGE CONTENTS

Verify that all items are present in your package:

- MLMLANT Steam Cleaner Main Unit
- Extension Tubes (2)
- Floor Brush
- Carpet Glider
- Towel of Floor Brush
- Glass Brush
- Big Nozzle
- Ironing Brush
- Round Brush (Stainless) (4)
- Round Brush (Nylon) (4)
- Strap
- Measuring Cup
- Glove
- Ironing Towel (3)

- Storage Base
- Aprons (2)
- O-rings (2)



Image: A comprehensive view of the MLMLANT Steam Cleaner and its 21-piece professional accessory kit, including various brushes, nozzles, extension tubes, and cleaning cloths.



Image: A detailed diagram illustrating all 21 multifunctional accessories included with the MLMLANT Steam Cleaner, clearly labeling each component such as the steam lock, adjustable button, safety valve, extension tubes, various brushes, and towels.



Image: A diagram illustrating the dimensions of the MLMLANT Steam Cleaner and its components, including the main unit, extension tubes, and hose, highlighting the maximum 6m cleaning radius with a 16.4 ft (500cm) power cord and 59 inch (150cm) soft pipe length.

Key Features:

- **Main Unit:** Contains the water tank, heating element, and controls.
- **Steam Hose:** Connects the main unit to the steam gun.
- **Steam Gun:** Features a steam trigger, steam lock, and adjustable steam control knob.
- **Extension Tubes:** For extended reach, especially for floor cleaning.
- **Floor Brush:** Used with extension tubes for cleaning floors.
- **Accessory Nozzles/Brushes:** Various attachments for specific cleaning tasks.
- **Power Cord:** Extra-long for superior reach.

SETUP

1. **Assemble Attachments:** Depending on your cleaning task, attach the desired accessory (e.g., floor brush with extension tubes, or a specific nozzle) to the steam gun. Ensure all connections are secure.

2. **Fill Water Tank:**

- Ensure the unit is unplugged and cool.
- Unscrew the safety cap counter-clockwise.
- Using the provided measuring cup, fill the water tank with up to 800ml of distilled or demineralized

water. The maximum capacity is 1.1L, but 800ml is recommended for optimal performance and safety. **Do not overfill.**

- Screw the safety cap back on clockwise until it is tightly sealed.



Image: A sequence of images demonstrating how to fill the MLMLANT Steam Cleaner's water tank, showing water being poured from a measuring cup into the unit's opening.



Image: A visual warning against using harsh chemicals with the steam cleaner, depicted by a red circle with a diagonal line over bottles of cleaning solutions.

3. **Power On:** Plug the power cord into a grounded electrical outlet. The power indicator light will illuminate.
4. **Heating:** The steam cleaner will begin heating the water. This typically takes under 5 minutes. The indicator light may change or turn off when the unit is ready to produce steam.

OPERATING INSTRUCTIONS

Steam Control:

- **Manual Steam:** Press and hold the steam trigger on the steam gun to release steam. Release to stop.
- **Continuous Steam:** For continuous steam, push the steam lock switch on the steam gun to the right. This will lock the trigger in the "on" position, allowing steam to flow without continuous pressing. Push it back to the left to disengage.
- **Adjustable Steam Volume:** Turn the knob on the steam gun to adjust the amount of steam from minimum (MIN) to maximum (MAX) output, catering to different cleaning needs.



Image: A detailed illustration of the MLMLANT Steam Cleaner's steam control features, including the adjustable steam volume knob (MIN to MAX) and the steam lock mechanism for continuous steam operation.



Image: A close-up view highlighting the steam lock feature on the MLMLANT Steam Cleaner's

handle, allowing for continuous steam without holding the trigger.



Image: A close-up view of the adjustable steam volume knob on the MLMLANT Steam Cleaner, showing settings for minimum and maximum steam output.

General Cleaning Tips:

- Always test the steam cleaner on an inconspicuous area first to ensure no damage or discoloration occurs.
- For heavily soiled areas, pre-treat with a suitable cleaner if necessary, then use the steam cleaner.
- Move the steam tool slowly over the surface to allow the heat to penetrate and loosen dirt.
- Wipe away loosened dirt with a clean cloth immediately after steaming.



Image: A collage showcasing the versatility of the MLMLANT Steam Cleaner for various applications, including cleaning grout, carpets, floors, sofas, ovens, grills, curtains, windows, car interiors, pet cages, and for toy disinfection.

NATURAL PROTECTION CLEANING FOR ANY SURFACE

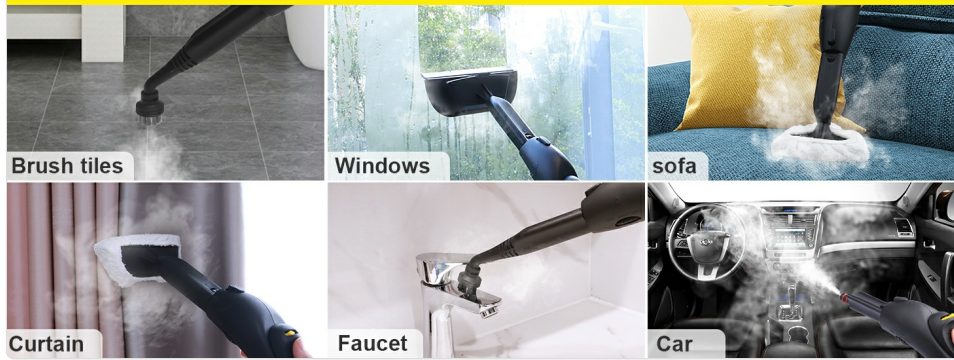


Image: A series of images illustrating the MLMLANT Steam Cleaner's effectiveness on diverse surfaces, including brush tiles, windows, sofas, curtains, faucets, and car interiors, emphasizing natural protection cleaning for any surface.

MEET THE CLEANING NEEDS OF A VARIETY OF FLOORS:

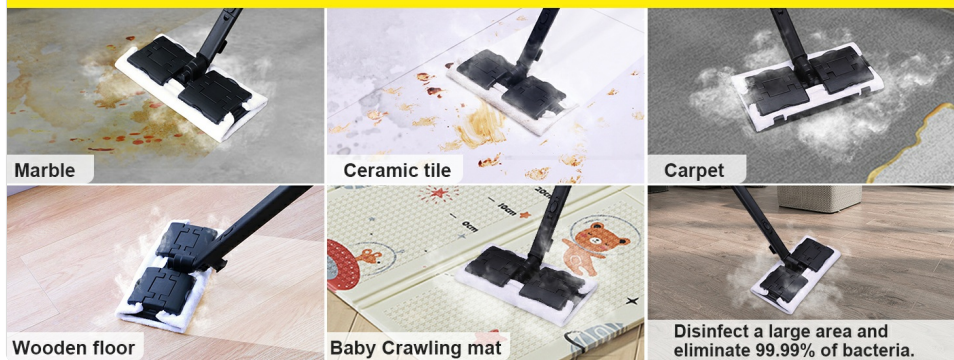


Image: A visual guide demonstrating the MLMLANT Steam Cleaner's suitability for various floor types, including marble, ceramic tile, carpet, wooden floor, and baby crawling mats, highlighting its ability to disinfect large areas and eliminate 99.99% of bacteria.

MAINTENANCE

After Each Use:

1. **Turn Off and Unplug:** Switch off the power and unplug the steam cleaner from the electrical outlet.
2. **Depressurize:** Push the steam gun switch to empty any remaining steam until no more steam is released.
3. **Empty Water Tank:** Allow the unit to cool down for 2-3 minutes. Carefully unscrew the safety cap counter-clockwise. Invert the unit over a sink to empty any remaining water from the tank.

CORRECT STEPS TO OPEN CAP



- 1** Turn off the power switch
- 2** Unplug the power outlet
- 3** Push the steam gun switch and empty the steam



- 4** After the red dot sinks, open the helmet counterclockwise
- 5** Wait 2-3 minutes before adding water or clearing the remaining water.

Image: A five-step visual guide demonstrating the correct procedure to safely open the cap and empty the water from the MLMLANT Steam Cleaner, emphasizing turning off, unplugging, releasing steam, waiting for the red dot to sink, and then carefully opening the cap to drain.



Image: The MLMLANT Steam Cleaner is shown being tilted over a sink to drain residual water from its tank, illustrating a key maintenance step.

- 4. Clean Accessories:** Rinse all accessories with clean water and allow them to air dry completely.
- 5. Store:** Store the steam cleaner and its accessories in a cool, dry place, away from direct sunlight and out of reach of children. The storage base can be used to organize accessories.



Image: A composite image demonstrating the portability of the MLMLANT Steam Cleaner with a shoulder strap and a view of its integrated storage compartment for accessories, highlighting convenience and organization.

Descaling (Periodically):

If you notice reduced steam output or hear unusual noises, mineral buildup may be occurring. To descale:

- Mix a solution of equal parts white vinegar and water.
- Pour the solution into the water tank (do not exceed 800ml).
- Allow it to sit for several hours or overnight.
- Empty the solution and rinse the tank thoroughly with clean water several times.
- Fill with fresh distilled water and operate the unit for a few minutes to flush out any remaining vinegar.

TROUBLESHOOTING

Problem	Possible Cause	Solution
---------	----------------	----------

Problem	Possible Cause	Solution
No steam or low steam output.	<ul style="list-style-type: none"> ◦ Unit not plugged in or powered on. ◦ Water tank empty. ◦ Unit not heated sufficiently. ◦ Mineral buildup. 	<ul style="list-style-type: none"> ◦ Check power connection and switch. ◦ Refill water tank (ensure unit is cool). ◦ Wait for 5 minutes for the unit to heat up. ◦ Perform descaling procedure.
Water leaking from attachments.	<ul style="list-style-type: none"> ◦ Attachments not securely connected. ◦ O-rings are worn or missing. ◦ Unit not fully heated, producing water instead of steam. 	<ul style="list-style-type: none"> ◦ Ensure all attachments are firmly clicked into place. ◦ Check and replace O-rings if necessary. ◦ Allow unit to heat completely before use.
Safety cap cannot be opened.	<ul style="list-style-type: none"> ◦ Unit is still pressurized. 	<ul style="list-style-type: none"> ◦ Ensure the unit is unplugged. Depressurize by holding the steam trigger until no more steam is released. Wait for the unit to cool down completely (red dot on cap should sink).

SPECIFICATIONS

- **Model:** B0B5ZP6QB2
- **Power:** 1500W
- **Voltage:** 110 Volts
- **Water Tank Capacity:** 1.1 Liters (800ml recommended fill)
- **Steam Pressure:** 4.5 bar
- **Heat-up Time:** Under 5 minutes
- **Continuous Steam Time:** Up to 30 minutes
- **Power Cord Length:** 16.4 ft (500 cm)
- **Steam Hose Length:** 5 ft (150 cm)
- **Color:** Yellow
- **Included Accessories:** 21-piece set

WARRANTY AND SUPPORT

MLMLANT products are designed and manufactured to the highest quality standards. For warranty information or technical support, please refer to the warranty card included with your purchase or visit the official MLMLANT website. Please have your model number (B0B5ZP6QB2) and purchase date available when contacting support.

Manufacturer: MLMLANT

Date First Available: July 7, 2022