



[Manuals.plus](#) /

> [Polar Aurora](#) /

> Polar Aurora 4-Tier Small Animal Pet Cage Kit User Manual (Model PP111)

Polar Aurora PP111

Polar Aurora 4-Tier Small Animal Pet Cage Kit User Manual

Model: PP111 | Brand: Polar Aurora



1. INTRODUCTION

This manual provides instructions for the assembly, operation, and maintenance of your Polar Aurora 4-Tier Small Animal Pet Cage Kit, Model PP111. This cage is designed to provide a secure and comfortable habitat for small animals such as guinea pigs, ferrets, and rabbits.



Image 1.1: Fully assembled Polar Aurora 4-Tier Small Animal Pet Cage Kit.

2. SAFETY INFORMATION

- Ensure all parts are securely fastened before placing animals inside the cage.
- Regularly inspect the cage for any damaged or loose components.
- Keep small children and other pets supervised around the cage to prevent accidental injury or escape.
- Do not overload platforms or hammocks beyond their intended capacity.
- Position the cage on a flat, stable surface. Use the wheel brakes to prevent unintended movement.

Safe and comfortable cage for small pets



Secure Locks



Safe & Secure



Sturdy Metal Wire



Sliding-out Bottom Tray

Image 2.1: Detail of the secure locking mechanism on the cage doors.

3. PACKAGE CONTENTS

Verify that all components are present before beginning assembly:

- Cage Panels (various sizes for sides, top, bottom)
- Platforms (4 units)

- Ramps with Flannel Covers (4 units)
- Hammock (1 unit)
- Removable Bottom Tray (1 unit)
- Universal Wheels (4 units, 2 with brakes)
- Assembly Hardware (screws, nuts, latches)

4. ASSEMBLY INSTRUCTIONS

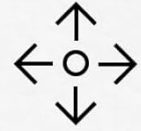
Follow these steps to assemble your pet cage. It is recommended to keep screws loose until all panels are in place, then tighten them securely.

1. **Attach Wheels:** Secure the four universal wheels to the bottom frame of the cage. Ensure the two wheels with brakes are positioned on the same side for easy access.
2. **Assemble Base Frame:** Connect the bottom cage panels to form the base structure.
3. **Install Side Panels:** Attach the side panels to the base frame.
4. **Insert Platforms:** Place the four platforms at desired heights within the cage. The platforms feature openings for ramp access.
5. **Attach Ramps:** Connect the ramps between the platforms. Ensure the flannel covers are properly positioned to provide traction and comfort for your pet.



Image 4.1: Detail of the 360-degree swivel wheels, two of which include brakes.

Easy Transport



The bottom of the animal cage has four universal wheels for easy movement, two of which can be secured to prevent accidental sliding

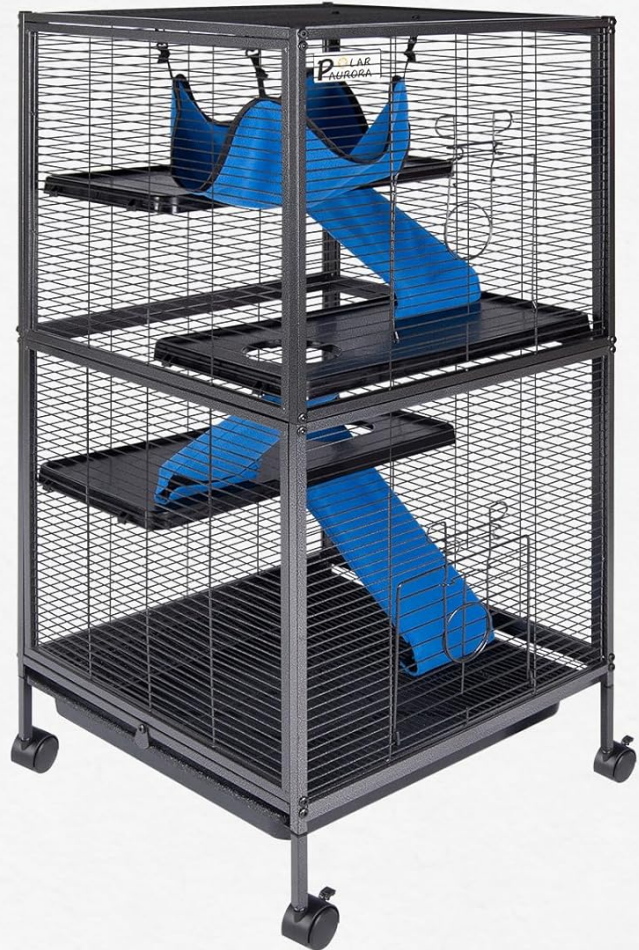


Image 4.2: Platforms and ramps installed within the cage structure.

6. **Install Top Panel:** Secure the top panel of the cage.
7. **Hang Hammock:** Attach the hammock to the top section of the cage using the provided hooks.
8. **Insert Bottom Tray:** Slide the removable bottom tray into the designated slot at the base of the cage. Ensure it is fully inserted and secured by any latches.
9. **Final Tightening:** Once all components are in place, securely tighten all screws and ensure the cage is stable.

5. OPERATING INSTRUCTIONS

- **Accessing Pets:** The cage features multiple doors for easy access to your pets for feeding, interaction, and cleaning.
- **Movement:** To move the cage, release the brakes on the wheels. To secure the cage in place, engage the wheel brakes.
- **Hammock Use:** The included hammock provides an additional resting or play area for your small animal.





POLAR
AURORA

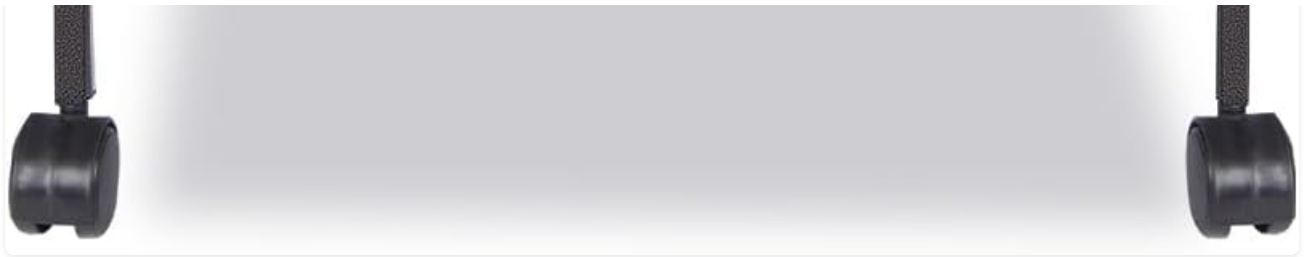


Image 5.1: Cage with rabbits, illustrating the multi-level design and accessibility.

6. MAINTENANCE

- **Daily Cleaning:** Remove any waste and replenish food and water daily.
- **Tray Cleaning:** The deep, removable bottom tray can be easily pulled out for cleaning. Dispose of waste and clean the tray with pet-safe disinfectant.
- **Platform and Ramp Cleaning:** Platforms and ramps can be wiped down with a damp cloth and pet-safe cleaner. The flannel covers on the ramps are removable for washing.
- **General Cleaning:** Periodically clean the entire cage structure with a pet-safe disinfectant and rinse thoroughly. Ensure all parts are dry before returning pets to the cage.

Suitable for Small Animals

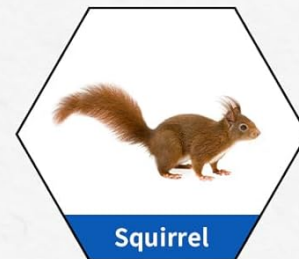


Image 6.1: The removable bottom tray for convenient waste disposal and cleaning.

7. TROUBLESHOOTING

| Issue | Possible Cause | Solution |
|------------------------------------|---------------------------------|--|
| Difficulty during assembly | Panels not aligning correctly. | Ensure all screws are kept loose until all panels are in place, then tighten them securely. Refer to the assembly diagram. |
| Hammock hangs too low | Straps are too long. | Adjust the length of the hammock straps by tying knots to shorten them to a suitable height. |
| Cage feels unstable after assembly | Screws are not fully tightened. | Go back and ensure all assembly screws are tightened firmly. |

| Issue | Possible Cause | Solution |
|-----------------------------------|---------------------------------|---|
| Bottom tray slides out too easily | Latch not engaged or too loose. | Ensure the tray latch is properly engaged. If adjustable, tighten the latch mechanism slightly. |

8. SPECIFICATIONS

| Feature | Detail |
|------------------------|--|
| Model Number | PP111 |
| Dimensions (L x W x H) | 20.0" x 20.0" x 45.0" (50.8 cm x 50.8 cm x 114.3 cm) |
| Item Weight | 34.1 pounds (15.47 kg) |
| Material | Alloy Steel, Metal |
| Color | Black |
| Number of Tiers | 4 |
| Gap Size | 0.75 Inches (1.9 cm) |
| Included Components | Cage panels, platforms, ramps, hammock, removable tray, wheels, assembly hardware. |
| Target Animals | Small animals (e.g., Ferrets, Guinea Pigs, Rabbits, Chinchillas) |

Product Size



Image 8.1: Detailed product dimensions.

9. WARRANTY AND SUPPORT

This Polar Aurora pet cage comes with a **1-year warranty** from the date of purchase, covering manufacturing defects.

For support, questions, or to report any issues, please contact the manufacturer, LKF, through your original point of purchase or their official customer service channels. Please refer to your purchase documentation for specific contact details.