

Jansite B0B5SWSV2B

Jansite 1080P AHD Backup Camera System User Manual

Model: B0B5SWSV2B

INTRODUCTION

This manual provides comprehensive instructions for the installation, operation, and maintenance of your Jansite 1080P AHD Backup Camera System. Please read this manual thoroughly before using the product to ensure proper function and safety.



Image: Jansite 1080P AHD Backup Camera System with 4.3 inch LCD Monitor, showing the monitor, camera, and power adapter.

PRODUCT CONTENTS

Verify that all components listed below are included in your package:

- 4.3-inch LCD Monitor
- 1080P AHD Rear Camera
- Dashboard Bracket

- License Plate Bracket
- Suction Cup Mount
- Extension Cable
- Car Charger Line (Lighter Adapter)
- User Manual

Product List



Monitor



Rear Camera



Dashboard bracket



License Plate Bracket



Suction cup mount



Extension cable



Car charger line



Manuale

Image: A visual representation of all items included in the product package, such as the monitor, rear camera, various mounting brackets, cables, and the manual.

KEY FEATURES

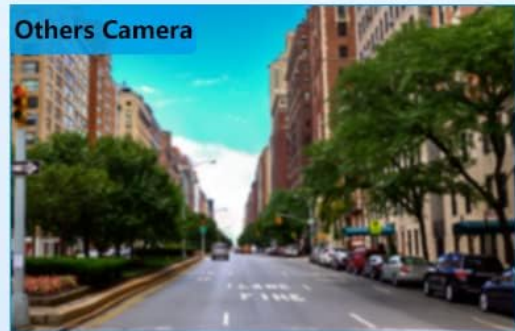
- **Advanced AHD 1080P Technology:** Utilizes advanced Y/C signal separation and AHD technology for high-definition, stable signal transmission, and high compatibility. Features 3D dynamic noise reduction for enhanced image clarity.

AHD Car Backup Camera

High Compatibility & 1 Million Pixels



Daytime



Night



Image: A comparison demonstrating the superior image quality of the AHD camera during both daytime and nighttime conditions compared to standard cameras.

- **Universal License Plate & Holeless Installation:** Includes two brackets for flexible mounting options, including a US-specific license plate bracket that allows installation without drilling, ensuring the camera is centered for optimal viewing.

Our installation method 1



Our installation method 2



Not Cover License Plate



Other camera holder



Cover License plate



Hidden Installation

2 brackets for 2 installation methods



Image: Illustrations of two installation methods for the camera, highlighting a hidden installation option that does not obstruct the license plate.

- **Excellent Night Vision & IP68 Waterproof:** Equipped with a high-sensitivity 6-piece STARVIS lens for improved night vision. The camera boasts an upgraded IP68 waterproof rating, achieved through a fully sealed glue filling process, ensuring all-weather compatibility.



IP68 **100% waterproof**
2 hours waterproof test at 3 feet underwater



Image: The camera is shown submerged in water, demonstrating its IP68 waterproof capability. Additional images show cars being washed, indicating the camera's durability in wet conditions.

- **DIY Reversing Guide & 140° Wide Angle:** Features 5 freely adjustable reversing lines, allowing customization of width and position. The 140° wide-angle lens provides a distortion-free view, effectively eliminating blind spots.

Adjustable reversing line

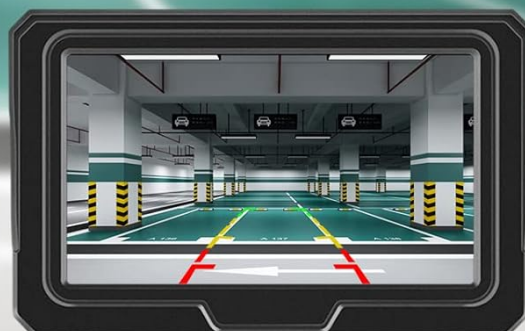
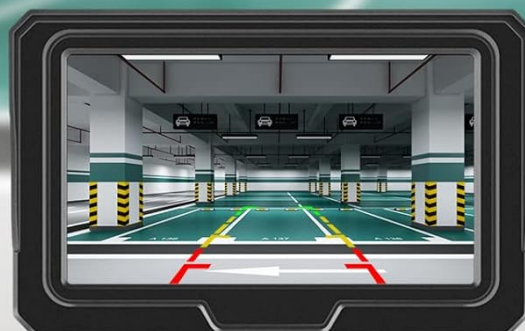
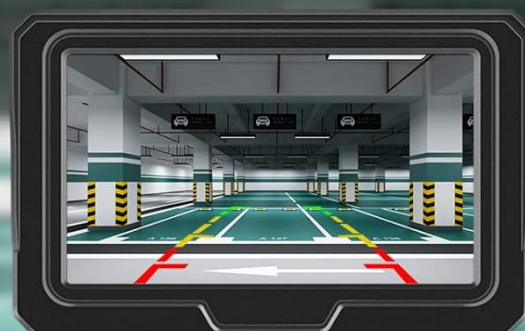
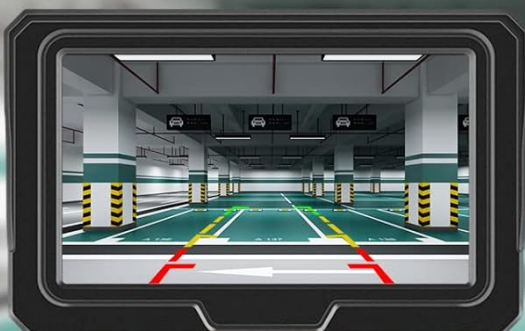
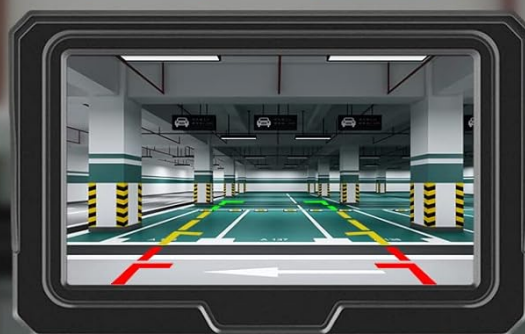
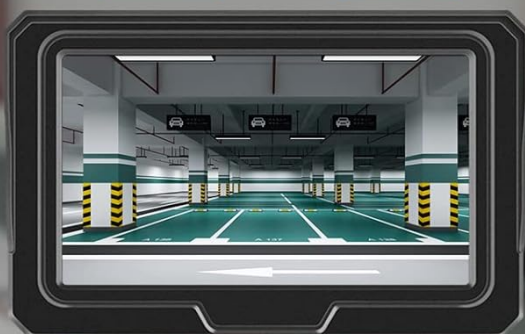
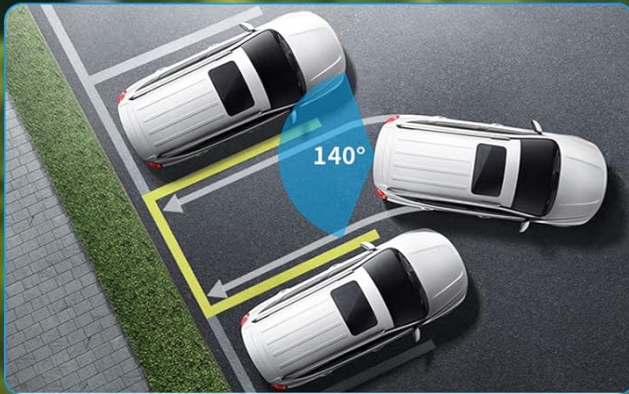


Image: Multiple screen captures of the monitor interface, illustrating the different adjustable reversing guide line modes available to the user.

140° Wide Angle



Horizontal viewing angle **140°**

Vertical viewing angle **140°**



OURS

Real image and undistorted
Easy to master distance and
accurate reversing



OTHERS

Image display is too narrow
there are blind spots unsafe

Image: A visual comparison highlighting the expansive 140-degree wide-angle view of the Jansite camera, showing its ability to capture a broader scene compared to narrower views from other cameras.

SETUP AND INSTALLATION

The Jansite Backup Camera System is designed for easy plug-and-play installation with minimal wiring.

Monitor Installation:

The monitor can be mounted in two ways:

- **On the Dashboard:** Use the provided dashboard bracket. Both brackets are rotatable for optimal viewing angle.
- **On the Windshield:** Use the provided suction cup mount. This mount is also rotatable for flexible positioning.

Two Ways to Mount

You can freely choose the location of the monitor

On the Dashboard

Both Brackets Can be Rotated



On the Windshield

Both Brackets Can be Rotated



Image: Illustrations demonstrating the two primary methods for mounting the monitor: securely on the dashboard using a stand, or on the windshield with a suction cup, both offering 360-degree rotation.

Camera and System Wiring:

1. Mount the rear camera using either the license plate bracket or the universal bracket, ensuring it is centered for the best view.
2. Connect the camera cable to the monitor.
3. Connect the car charger line (lighter adapter) to the monitor.
4. Plug the car charger line into your vehicle's cigarette lighter socket.

The system is designed for a single-wire connection, simplifying the installation process.

HOW TO INSTALL



Image: A clear diagram showing how to connect the rear camera to the monitor and the monitor to the car's power source via the lighter adapter, emphasizing the simplicity of the single-wire setup.

OPERATING INSTRUCTIONS

Basic Operation:

- Once powered, the monitor will display the camera feed.
- The system automatically switches to the reversing image when the vehicle is put into reverse gear (if wired accordingly, though the product description implies it's always on when powered via car charger).

Adjusting Reversing Guide Lines:

The system allows for customization of the reversing guide lines:

- Access the monitor's menu settings.
- You can choose from 5 freely adjustable reversing lines.

- Adjust the width of the parking line.
- Move the lines Left/Right/Up/Down to accurately reflect your vehicle's dimensions and parking needs.

Monitor Settings:

The monitor's display settings can be adjusted for optimal viewing:

- **Brightness:** Adjust to suit ambient light conditions.
- **Contrast:** Modify the difference between light and dark areas.
- **Saturation:** Control the intensity of colors.
- **Tone:** Adjust the color balance.
- **Language:** Select your preferred language for the menu.

Image Inversion:

The camera supports switching between mirror image and normal image display, allowing it to be used as both a rear or front view camera. This is typically controlled by cutting a specific wire on the camera cable (refer to the detailed instructions in the included physical manual for precise wire identification).

MAINTENANCE

To ensure the longevity and optimal performance of your Jansite Backup Camera System, follow these maintenance guidelines:

- **Cleaning the Camera Lens:** Regularly clean the camera lens with a soft, damp cloth to remove dirt, dust, or water spots that may obstruct the view. Avoid abrasive cleaners.
- **Cleaning the Monitor Screen:** Use a soft, lint-free cloth to clean the monitor screen. For stubborn smudges, a screen cleaner designed for electronics can be used sparingly.
- **Cable Inspection:** Periodically check all cables for any signs of wear, fraying, or damage. Ensure connections remain secure.
- **Mounting Security:** Verify that the monitor and camera mounts are securely fastened, especially after driving on rough terrain or through extreme weather conditions.
- **Waterproof Rating:** While the camera is IP68 waterproof, avoid directing high-pressure water jets directly at the camera during car washes to prevent potential damage over time.

TROUBLESHOOTING

If you encounter issues with your Jansite Backup Camera System, refer to the following common problems and solutions:

Problem	Possible Cause	Solution
No image on monitor / Monitor screen is black.	<ul style="list-style-type: none">• Power cable not connected or loose.• Car charger not receiving power.• Camera cable disconnected or damaged.• Monitor or camera malfunction.	<ul style="list-style-type: none">• Ensure the car charger is securely plugged into the cigarette lighter socket and the vehicle's ignition is on.• Check all cable connections between the camera and monitor.• Test the cigarette lighter socket with another device.• If issues persist, contact customer service.

Problem	Possible Cause	Solution
Image is blurry or unclear.	<ul style="list-style-type: none">• Camera lens is dirty.• Poor lighting conditions.• Camera not focused (unlikely for fixed-focus cameras).	<ul style="list-style-type: none">• Clean the camera lens thoroughly.• Ensure sufficient lighting, especially at night (the camera has enhanced night vision, but extreme darkness can still affect clarity).• Adjust monitor brightness/contrast settings.
Guide lines are incorrect or not visible.	<ul style="list-style-type: none">• Guide lines are disabled or improperly adjusted.	<ul style="list-style-type: none">• Access the monitor's menu to enable and adjust the guide lines (width, position).
Monitor falls off dashboard/windshield.	<ul style="list-style-type: none">• Suction cup/adhesive losing grip due to temperature changes or dust.	<ul style="list-style-type: none">• Clean the mounting surface and the suction cup/adhesive thoroughly before re-attaching.• Ensure the surface is smooth and non-porous.• Press firmly to remove air bubbles from the suction cup.

SPECIFICATIONS

Brand	Jansite
Model	B0B5SWSV2B
Display Technology	LCD
Screen Size	4.3 Inches
Optical Sensor Technology	CCD
Lens Type	Wide Angle
Real Angle of View	140 Degrees
Voltage	12 Volts
Installation Type	Bracket Mount, Dashboard Mount, Surface Mount
Connectivity	The product specifications list "Wireless" connectivity. However, the installation diagrams indicate a physical wired connection between the camera and the monitor, and the monitor is powered via a car charger. This "wireless" feature might refer to internal signal processing or a general product line feature.
IP Rating	IP68 (Camera)
Item Weight	1.01 pounds
Package Dimensions	9.02 x 6.26 x 2.52 inches
First Available Date	August 17, 2022

WARRANTY AND SUPPORT

Jansite is committed to providing excellent customer service and product support:

- **Customer Service:** 24-hour online customer service is available to assist you with any inquiries or issues.
- **Refund Guarantee:** Enjoy a 30-day refund guarantee from the date of purchase.
- **Warranty:** The product comes with a 12-month warranty, covering manufacturing defects and malfunctions under normal use.

For support, please refer to the contact information provided in your product packaging or visit the official Jansite website.

© 2024 Jansite. All rights reserved.

For more information, visit [Jansite Store on Amazon](#).