

Desview R5II

Desview R5II 5.5-inch Camera Field Monitor User Manual

Model: R5II | Brand: Desview

1. INTRODUCTION

This manual provides detailed instructions for the proper use and maintenance of your Desview R5II 5.5-inch Camera Field Monitor. Please read this manual thoroughly before operating the device to ensure optimal performance and longevity. The Desview R5II is a high-resolution, daylight-viewable monitor designed for professional film making and video production, offering advanced monitoring tools and 4K HDMI support.

2. PACKAGE CONTENTS

Verify that all items listed below are included in your package:

- 1x Desview R5II Monitor
- 1x Sun Hood
- 1x Holder/Mount
- 1x Mini HDMI Cable
- 1x Micro HDMI Cable
- 1x USB Flash Drive
- 1x User Manual

3. PRODUCT OVERVIEW AND INTERFACE DESCRIPTION

Familiarize yourself with the various ports and controls on your Desview R5II monitor.

Interface Description

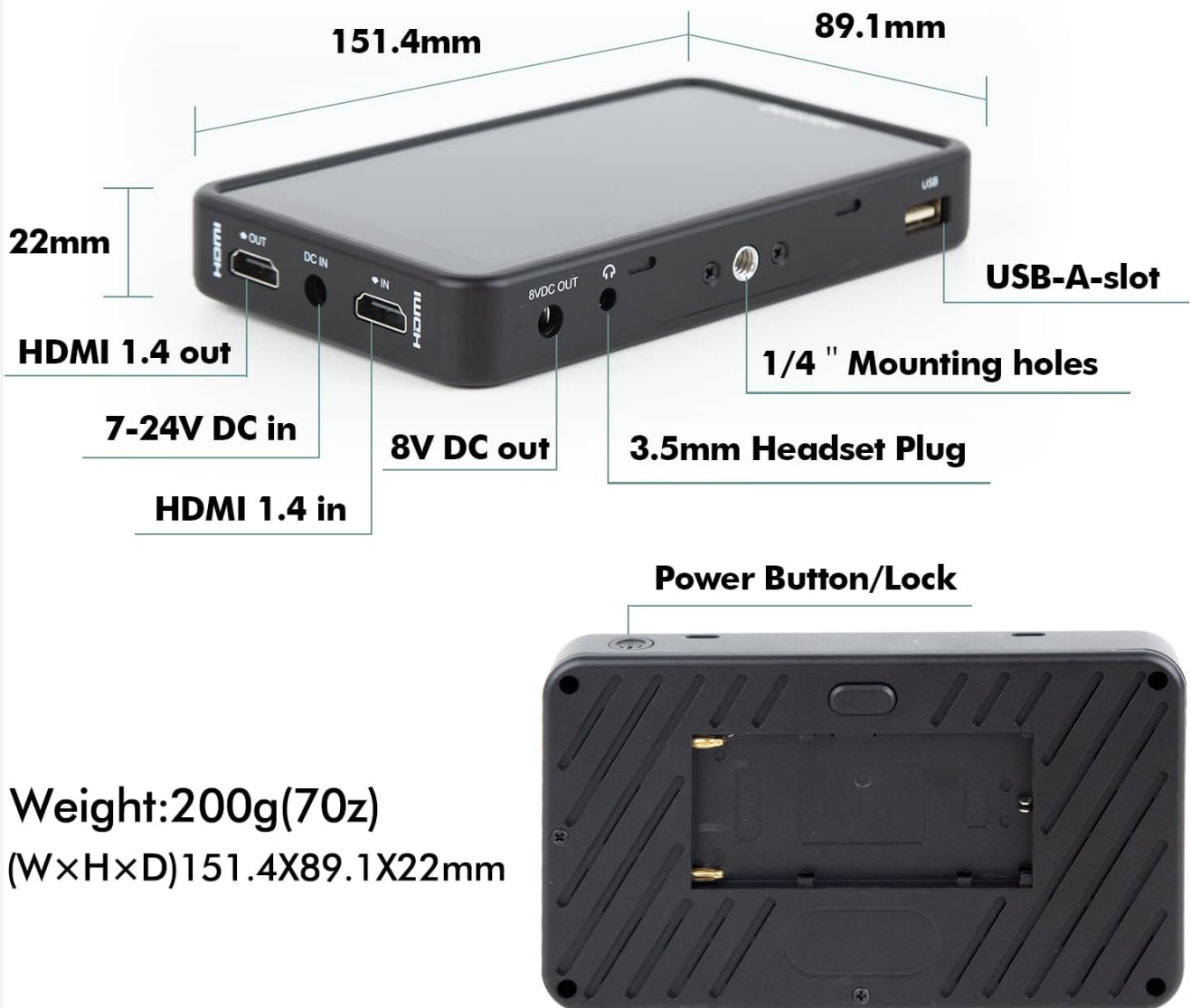


Image: Detailed view of the Desview R5II monitor's interfaces, including dimensions and port labels.

- **HDMI 1.4 In:** Connect your camera or video source for signal input.
- **HDMI 1.4 Out:** Output the video signal to another monitor or device.
- **DC In (7-24V):** Power input for the monitor using an external DC adapter.
- **8V DC Out:** Provides power to compatible external devices.
- **3.5mm Headset Plug:** For real-time audio monitoring.
- **USB-A Slot:** Used for loading 3D LUTs and firmware updates.
- **1/4" Mounting Holes:** Standard mounting points for attaching to cameras, rigs, or stands.
- **Power Button/Lock:** Press and hold to power on/off. Short press to lock/unlock the screen.

4. SETUP

4.1 Powering the Monitor

The R5II monitor offers flexible power solutions:

- **Battery Power:** Insert a standard NP-F series battery or E6 battery (not included) into the battery slot on the back of the monitor. Ensure the battery is securely latched.

- **DC Power:** Connect a DC 12V adapter (not included) to the DC IN port for continuous power.

Important: Remove the battery after use to prevent drainage.



Image: Illustration of power options, including battery and DC input/output.

4.2 Mounting the Monitor

Attach the monitor to your camera rig or stand using the provided holder and the 1/4" mounting holes. Ensure the mount is tightened securely to prevent accidental detachment.

4.3 Connecting HDMI

Connect your camera's HDMI output to the monitor's HDMI IN port using the appropriate HDMI cable (Mini HDMI or Micro HDMI, depending on your camera). The monitor supports 4K UHD 3840x2160p (24/25/30Hz) and 4096x2160p (24Hz) input signals.

5. OPERATING INSTRUCTIONS

5.1 Basic Controls and Touch Screen Operation

The Desview R5II features a full touch screen for intuitive control. Pinch-to-zoom functionality allows for detailed inspection of images.

Full Touch Screen & Pinch to Zoom

The monitor adopts full touch screen operation, supports pinch to zoom, easy to view local details.



Backlight



Adjusting the brightness of the screen backlight by on the left side of screen (1/2 split screen)



Adjusting the volume by on the right side of the screen (1/2 split screen)

Image: Demonstrates touch screen gestures for backlight adjustment, brightness, and volume control.

- **Power On/Off:** Press and hold the power button.
- **Screen Lock:** Short press the power button to lock/unlock the touch screen.
- **Menu Navigation:** Tap icons or swipe to navigate the on-screen menu.
- **Brightness Adjustment:** Swipe on the left side of the screen (1/2 split screen) to adjust backlight.
- **Volume Adjustment:** Swipe on the right side of the screen (1/2 split screen) to adjust volume.
- **Pinch to Zoom:** Use two fingers to pinch in or out on the screen to zoom in or out on the image.

5.2 Advanced Monitoring Tools

The R5II monitor integrates a suite of professional monitoring tools to assist with accurate exposure, focus, and color analysis.



Image: Overview of various monitoring functions available on the Desview R5II monitor.

- **Histogram:** Displays the tonal distribution of your image, helping to prevent clipping in highlights and shadows.
- **Vectorscope:** Visualizes the color information in your image, useful for color grading and ensuring color accuracy.
- **Waveform:** Shows the luminance and chrominance levels across the image, aiding in exposure and white balance adjustments.
- **False Color:** Assigns specific colors to different exposure levels, providing a quick visual guide for correct exposure.
- **Peaking Focus Assist:** Highlights sharp edges in the image with a selectable color, making it easier to achieve precise focus.
- **Zebra Exposure:** Displays zebra stripes over areas that exceed a set exposure threshold, indicating overexposure.
- **Zoom:** Magnifies a portion of the image for critical focus and detail checking.
- **HDR (High Dynamic Range):** Enables the monitor to display a wider range of brightness and color, providing a more accurate representation of HDR content.
- **LUT (Look Up Table) Support:** Allows you to apply custom 3D LUTs for color correction and creative looks.

Support Custom 3D LUTs

Factory preset 11 common camera logfiles (Camera LUTs), Support user luts to load, delete, and batch load (load all) individually, up to 64 lut files can be loaded.

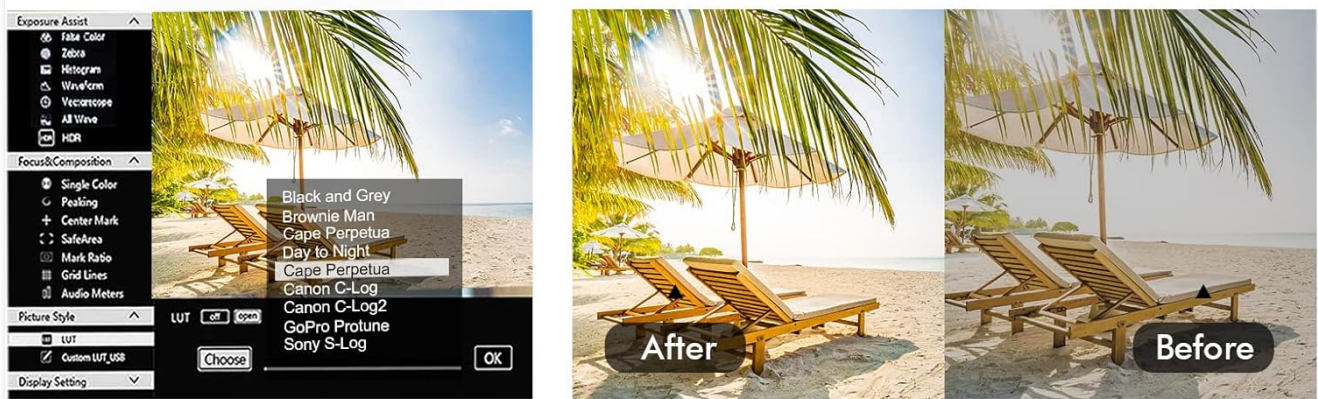


Image: Demonstrates the process of loading and applying custom 3D LUTs via a USB drive.

To load custom 3D LUTs, save your .cube files to the provided USB drive, insert it into the monitor's USB-A slot, and navigate to the LUT menu option to import. The monitor supports up to 64 LUT files.

5.3 4K HDMI Input and Output

The R511 monitor supports various HDMI input and output signal formats, allowing for seamless integration into professional workflows.

4K HDMI SUPPORT

HDMI input signal format	HDMI output signal format
720x480i&720x480p@59.94, 60Hz	720x480i&720x480p@59.94, 60Hz
720x576i&720x576p@50Hz	720x576i&720x576p@50Hz
1280x720p@50, 59.94, 60Hz	1280x720p@50, 59.94, 60Hz
1920x1080i@50, 59.94, 60Hz	1920x1080i@50, 59.94, 60Hz
1920x1080psf@24, 25, 29.97, 30Hz	1920x1080psf@24, 25, 29.97, 30Hz
1920x1080p@23.93, 24, 25, 29.97,30, 50,59.94,60Hz	1920x1080p@23.93, 24, 25, 29.97,30, 50,59.94,60Hz
3840x2160p@24,25,30Hz	3840x2160p@24,25,30Hz
4096x2160p@24Hz	4096x2160p@24Hz



Image: Table detailing supported HDMI input and output signal formats for the Desview R5II monitor.

The monitor can receive 4K HDMI signals without delays and simultaneously send them to another monitor via the HDMI OUT port, facilitating multi-monitor setups for directors and cinematographers.

5.4 Audio Monitoring

Connect headphones to the 3.5mm headphone jack to monitor audio in real-time, ensuring sound quality during recording.

5.5 Brightness and Light Sensor Control

With 800 nits of brightness, the R5II is daylight-viewable, making it suitable for outdoor shooting. The integrated light sensor can automatically adjust screen brightness for optimal viewing conditions.

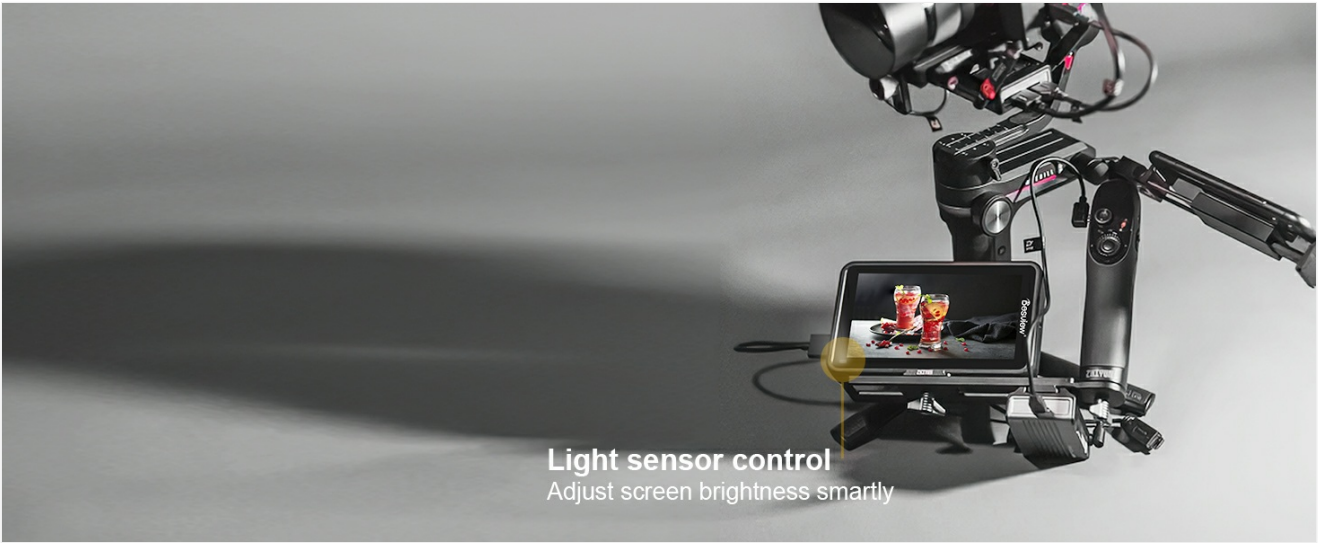


Image: Depicts the monitor in a studio setting, highlighting the light sensor control feature.

6. MAINTENANCE

To ensure the longevity and optimal performance of your Desview R5II monitor, follow these maintenance guidelines:

- **Cleaning:** Use a soft, dry cloth to clean the monitor's exterior. For the screen, use a specialized screen cleaning solution and a microfiber cloth. Avoid harsh chemicals or abrasive materials.
- **Storage:** When not in use, store the monitor in a cool, dry place, away from direct sunlight and extreme temperatures. Use the included sun hood or a protective case to prevent scratches and dust accumulation.
- **Battery Care:** If using batteries, remove them when the monitor is not in use for extended periods to prevent battery drainage or damage.

- **Avoid Impact:** Handle the monitor with care to prevent drops or impacts, which can damage internal components or the screen.

7. TROUBLESHOOTING

If you encounter issues with your Desview R5II monitor, refer to the following common problems and solutions:

- **Monitor does not power on:**
 - Ensure the battery is fully charged and correctly inserted, or the DC adapter is properly connected and supplying power.
 - Check the power button for proper function.
- **No video signal:**
 - Verify that the HDMI cable is securely connected to both the camera and the monitor.
 - Confirm that the camera's HDMI output is active and configured correctly.
 - Try a different HDMI cable to rule out cable issues.
 - Ensure the input signal format from your camera is supported by the monitor (refer to 4K HDMI Support section).
- **Screen is dark or dim:**
 - Adjust the backlight setting via the touch screen controls.
 - If using the light sensor, ensure it is not obstructed.
- **Monitor overheats and shuts down:**
 - Ensure adequate ventilation around the monitor. Avoid operating in direct, intense sunlight for prolonged periods without proper shading.
 - Reduce screen brightness if possible.
- **Touch screen unresponsive:**
 - Short press the power button to unlock the screen.
 - Restart the monitor.

If the problem persists after attempting these solutions, please contact Desview customer support.

8. SPECIFICATIONS

Detailed technical specifications for the Desview R5II monitor:



Image: Back of the Desview R5II product box displaying key specifications.

Feature	Specification
Model Number	R5II
Screen Size	5.5 inches
Resolution	1920 x 1080 (Full HD)
Pixel Density	401 ppi
Brightness	800 nits (cd/m²)
Contrast Ratio	1000:1
Viewing Angle	178° (Horizontal & Vertical)
Aspect Ratio	16:9
HDMI Input	1x HDMI 1.4 (Type A Female)
HDMI Output	1x HDMI 1.4 (Type A Female)
Audio Output	3.5mm Headphone Jack
USB Port	1x USB-A (for LUTs/Updates)
Power Input	DC 7-24V
Power Output	DC 8V
Battery Compatibility	NP-F series, E6 batteries
Product Dimensions	151.4 x 89.1 x 22 mm (5.9 x 3.5 x 0.86 inches)

Item Weight	200g (7oz) (excluding batteries)
-------------	----------------------------------

9. WARRANTY AND SUPPORT

Desview products typically come with a manufacturer's warranty. Please refer to the warranty card included in your package or visit the official Desview website for specific warranty terms and conditions. For technical support, troubleshooting assistance, or service inquiries, please contact Desview customer support.

Manufacturer: Desview

Manufacturer Address: 5F, Block 24th, LongB Industrial Zone, 27 Dafa Road, Bantian, Longgang, Shenzhen, Guangdong, China, 518129




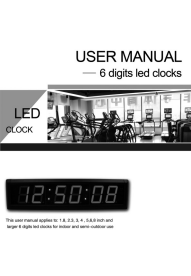


10. CONTACT INFORMATION

For more information, support, or to explore other Desview products, please visit our official channels:



Image: Desview branding with website and social media handles.

- **Official Website:** desview.com
- **Email Support:** support@desview.com
- **Social Media:** Find us on Instagram, Facebook, and Twitter via @desviewglobal

	<p>Desview R6 UHB 5.5" 2800nits Ultra High Brightness Monitor Specifications</p> <p>Detailed specifications for the Desview R6 UHB, a 5.5-inch ultra-high brightness monitor with 2800nits, touch screen functionality, and Rec.709 color correction. Features include advanced functions like False Color, RGB Histogram, HDR Monitoring, and various signal ports.</p>
	<p>Desview DT Series Teleprompter for Broadcasting User Manual</p> <p>Comprehensive user manual for the Desview DT Series Teleprompter, covering installation, software setup, operation, and troubleshooting for broadcasting applications.</p>
	<p>Desview Universal Wireless VR Remote & Gamepad User Manual</p> <p>Comprehensive user manual for the Desview Universal Wireless VR Remote & Gamepad, detailing setup, operation, features, specifications, and troubleshooting for VR, gaming, and multimedia applications across various devices.</p>
	<p>Desview BG200 Digital Clock for Teleprompters - User Guide</p> <p>User guide for the Desview BG200 digital clock, an accessory for Desview DT20, DT22, and DT24 teleprompters. Details time setting, automatic power on/off, and remote control operation.</p>
	<p>Desview R6 UHB 5.5" 2800nits Ultra High Brightness Monitor Specifications</p> <p>Detailed specifications for the Desview R6 UHB, a 5.5-inch ultra-high brightness monitor with 2800nits, touch screen functionality, and Rec.709 color correction. Features include advanced functions like False Color, RGB Histogram, HDR Monitoring, and various signal ports.</p>
	<p>Besview R5II Field Monitor User Manual</p> <p>User manual for the Besview R5II Field Monitor, detailing its features, operation, settings, technical specifications, and warranty. Includes information on setup, touchscreen controls, LUT import, firmware updates, and disposal guidelines.</p>



[Besview R5II Field Monitor User Manual](#)

User manual for the Besview R5II Field Monitor, detailing its features, operation, settings, technical specifications, and warranty. Includes information on setup, touchscreen controls, LUT import, firmware updates, and disposal guidelines.
lang:en **score:40** filesize: 1.48 M page_count: 22 document date: 2022-05-20



[\[pdf\] User Manual](#)

BDA Rollei R5II Field Monitor DE Download Desview Touch Screen Center rollei en desview r5ii touch screen monitor 2 ind 1655302951631 filename 1655302951wpdm wpdmdl 1645 refresh 62c9d4dd5bcd01657394397 |||
Bedienungsanleitung Inhalt Hinweis Produktübersicht Bedienung Einstellungen Technische Daten ... en zur getrennten Sammlung von Wertstoffen. Altgeräte dürfen nicht in den Hausmüll. Sollte die Desview **R5II** einmal nicht mehr benutzt werden können, so ist jeder Verbraucher gesetzlich verpflichtet, Altge...
lang:de **score:39** filesize: 1.49 M page_count: 22 document date: 2022-05-20



[\[pdf\] Declaration of Conformity](#)

EG Konformitätserklärung Our Valued Customer Download Desview R5II Touch Screen Monitor Rollei Center Field Konformitaet DE EN rollei en desview r5ii touch screen monitor 2 ind 1655302955072 filename 1655302954wpdm wpdmdl 1645 refresh 62c9d4dd5bd671657394397 |||
EG-Konformitätserklärung EU-Declaration of conformity Hiermit erklären wir, Rollei GmbH & Co. KG; In de ... and bulk production will be effected accordingly. Artikelbezeichnung: article description Desview **R5II** Field Monitor Artikelnummer: article number: 28807 Type: Field Monitor Baureihe/Model: Tec...
lang:en **score:37** filesize: 100.46 K page_count: 1 document date: 2022-06-01