

BAMEOS wall shelf

BAMEOS Floating Shelves Instruction Manual

Model: Wall Shelf (31x7 White)

1. INTRODUCTION

Thank you for choosing BAMEOS Floating Shelves. These wall-mounted wooden shelves are designed to provide a stylish and practical storage solution for your home. With their invisible bracket design, they offer a clean, modern aesthetic while maximizing your space. This manual provides detailed instructions for proper installation, safe usage, and maintenance to ensure long-lasting enjoyment of your product.



Image: BAMEOS Floating Shelves (Set of 2)

2. SAFETY INFORMATION

Please read and understand all safety instructions before installation and use. Failure to follow these instructions may result in injury or damage to the product or property.

- **Weight Capacity:** Do not exceed the maximum load capacity of 20 lbs (approximately 9 kg) per shelf. Overloading can cause the shelf to detach from the wall, leading to damage or injury.
- **Proper Installation:** Ensure the shelves are securely mounted to a sturdy wall stud or appropriate wall anchors for your wall type (e.g., drywall, concrete, brick). Using only drywall without proper anchors is not recommended.
- **Tools:** Use appropriate tools for installation, including a drill, level, measuring tape, and screwdriver.
- **Children and Pets:** Keep children and pets away from the installation area during assembly. Do not allow children to climb on or hang from the shelves.
- **Placement:** Avoid placing shelves in areas where they may be easily bumped or where items could fall and cause injury.

3. PACKAGE CONTENTS

Before beginning installation, please verify that all components are present and undamaged. If any parts are missing or damaged, please contact customer support.

- 2 x BAMEOS Floating Shelf Boards (White, 31.5" L x 7.7" W x 1.5" H)
- 2 x Invisible Mounting Brackets
- Mounting Hardware (screws, wall anchors)
- 1 x Assembly Tool (e.g., small wrench or screwdriver)
- 1 x Instruction Manual

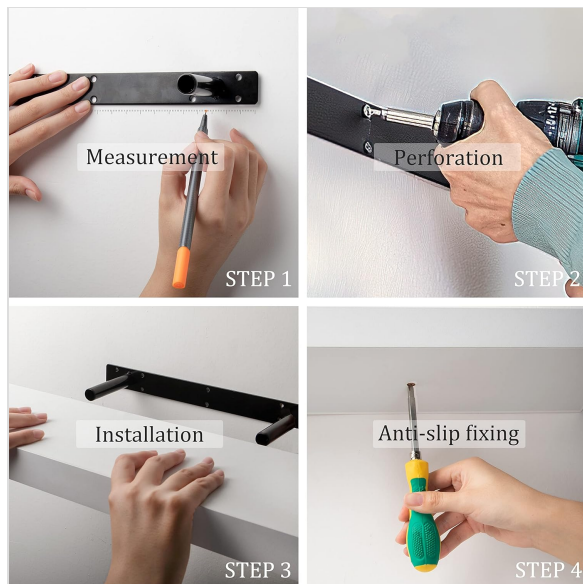
4. SETUP AND INSTALLATION

Installation is designed to be straightforward and can typically be completed in about 15 minutes. Follow these steps carefully for secure mounting.

Required Tools (Not Included):

- Pencil
- Measuring Tape
- Level
- Drill with appropriate drill bits for your wall type
- Hammer (if using wall anchors)

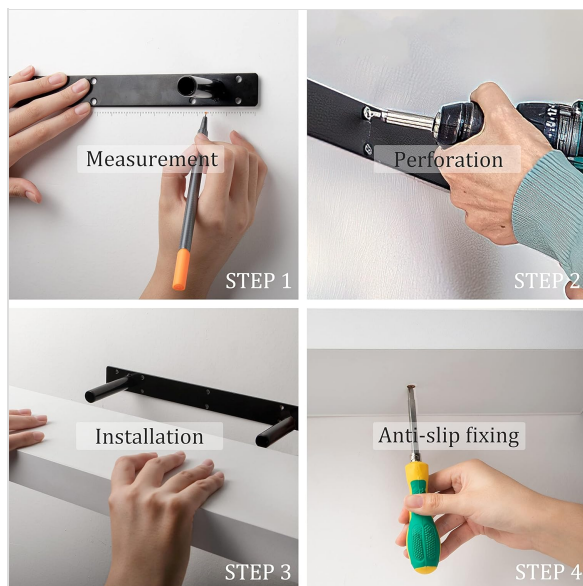
Installation Steps:



Step 1: Measurement

Determine the desired height and position for your shelf.

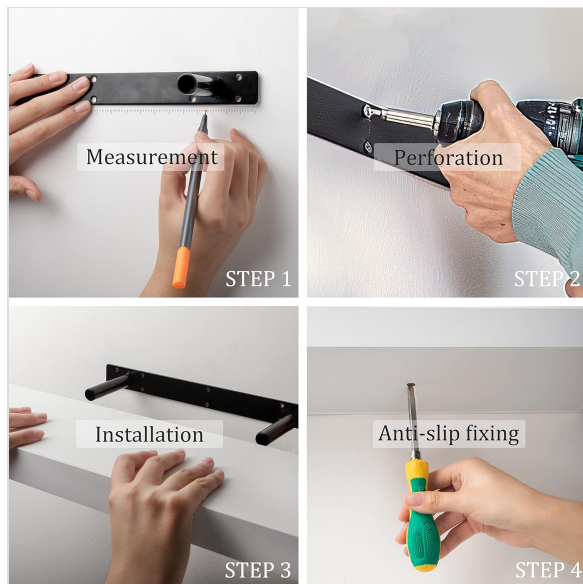
Use a level to ensure the bracket will be perfectly horizontal. Mark the drilling points on the wall using the bracket as a template. Ensure marks align with wall studs if possible, or prepare to use appropriate wall anchors.



Step 2: Perforation

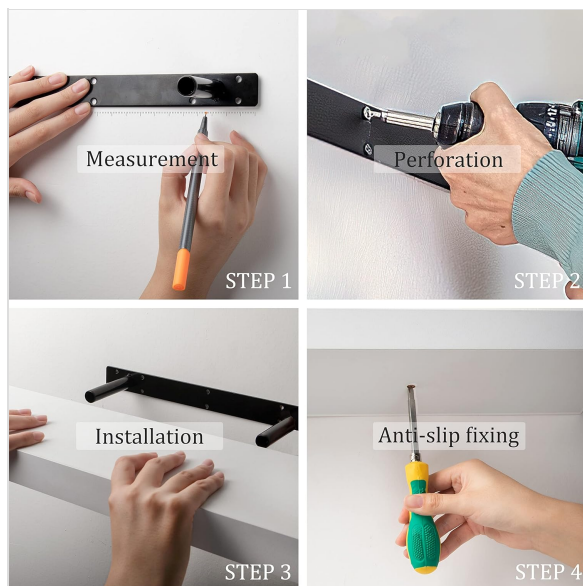
Using a drill, create pilot holes at the marked points. The

drill bit size should match the diameter of your wall anchors or screws. If using wall anchors, insert them into the drilled holes, tapping gently with a hammer if necessary until flush with the wall surface.



Step 3: Bracket and Shelf Installation

Align the mounting bracket with the drilled holes and secure it to the wall using the provided screws. Ensure the bracket is firmly attached. Once the bracket is secure, carefully slide the floating shelf board onto the metal rods of the bracket until it is flush against the wall.



Step 4: Anti-slip Fixing

Locate the small screw holes on the underside of the shelf, near the bracket rods. Use the provided assembly tool (screwdriver) to insert and tighten the small anti-slip screws. This step secures the shelf to the bracket, preventing it from sliding off.

5. OPERATING AND USAGE

Your BAMEOS Floating Shelves are designed for versatile use across various rooms in your home. They are ideal for displaying decorative items, organizing small essentials, or holding media devices.

- **Weight Distribution:** Distribute weight evenly across the shelf surface. Avoid concentrating heavy items in one spot.
- **Suitable Items:** These shelves are perfect for books, small plants, picture frames, speakers, projectors, game consoles, beauty products, spices, and other decorative or lightweight items.

- **Room Versatility:** Use them in the living room as a TV wall shelf, in the bedroom for decor, in the bathroom for toiletries, or in the kitchen for jars and spices.



Image: Shelf dimensions and placement under a TV.



Image: Shelf with items, illustrating 20 lbs load capacity.



Image: Shelves in a bathroom setting.



Image: Shelves in a kitchen setting.



Image: Shelves in an office/study setting.

6. MAINTENANCE

To keep your BAMEOS Floating Shelves looking their best, follow these simple maintenance guidelines:

- **Cleaning:** Wipe the shelves regularly with a soft, damp cloth. For tougher spots, a mild soap solution can be used, followed by drying with a clean, dry cloth. Avoid abrasive cleaners or harsh chemicals, as these can damage the finish.
- **Dusting:** Dust with a dry, soft cloth or a feather duster.
- **Avoid Moisture:** While the shelves are durable, prolonged exposure to excessive moisture should be avoided. Promptly wipe up any spills.
- **Inspection:** Periodically check the mounting screws and brackets to ensure they remain tight and secure. Retighten if necessary.

7. TROUBLESHOOTING

If you encounter any issues with your BAMEOS Floating Shelves, refer to the following common problems and solutions:

Problem	Possible Cause	Solution
Shelf feels wobbly or loose	Mounting screws are loose; improper wall anchors; overloaded shelf.	Retighten all mounting screws. Ensure appropriate wall anchors were used for your wall type. Reduce the weight on the shelf.
Shelf is not level	Bracket was installed unevenly.	Remove the shelf and bracket. Re-measure and re-drill holes, ensuring the bracket is perfectly level before re-mounting.
Shelf slides off bracket easily	Anti-slip fixing screws not tightened.	Ensure the small anti-slip screws on the underside of the shelf are fully tightened into the bracket.
Damage to shelf surface	Impact; harsh cleaning agents.	Avoid dropping heavy items on the shelf. Use only soft cloths and mild cleaners for maintenance.

8. SPECIFICATIONS



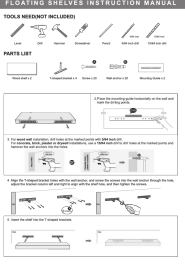

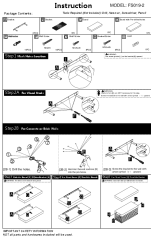

- **Brand:** BAMEOS
- **Model:** Wall Shelf
- **Material:** Engineered Wood
- **Color:** White
- **Quantity:** Set of 2 Shelves
- **Dimensions (each shelf):** Approximately 31.5 inches (L) x 7.7 inches (W) x 1.5 inches (H)
- **Load Capacity (each shelf):** 20 lbs (9 kg)
- **Mounting Type:** Wall Mount (Invisible Brackets)
- **Special Features:** Durable

9. WARRANTY AND SUPPORT

BAMEOS is committed to customer satisfaction. Your floating shelves come with a lifetime warranty, reflecting our confidence in the quality and durability of our product.

- **Warranty Coverage:** We provide quality assurance service and long-term installation guidance. This warranty covers defects in materials and workmanship under normal use.
- **Customer Support:** If you have any questions, concerns, or are dissatisfied with your purchase for any reason, please do not hesitate to contact our customer service team. We are available 24/7 to assist you.
- **Contact Information:** Please refer to your purchase documentation or the retailer's website for the most current customer service contact details.

Related Documents - wall shelf

	<p>DVD-42 2-Tier Floating Wall Mount Shelf Specifications</p> <p>Detailed specifications for the DVD-42, a 2-tier wooden floating wall mount shelf. Features include particle board construction, dimensions of 350x280mm, 15mm thickness, and a weight capacity of 10kg per tier.</p>
	<p>Sturdy & Durable 24-Inch Wall Shelf High-Quality Steel</p> <p>Explore the features of this sturdy and durable 24-inch wall shelf, made from high-quality steel. It boasts a 35 lbs weight capacity and offers two simple installation methods.</p>
	<p>Floating Shelves Instruction Manual and Warranty Information</p> <p>This document provides instructions for installing floating shelves and details the two-year limited warranty provided by the manufacturer. It includes a parts list, step-by-step installation guides, and important safety warnings.</p>
	<p>SENJIE Wall Shelves Installation Guide - Easy Assembly Instructions</p> <p>Detailed installation guide for SENJIE Wall Shelves. This document provides a comprehensive overview of package contents and step-by-step assembly instructions for mounting the rustic wood shelves with an integrated wire storage basket. Perfect for organizing bathrooms, kitchens, bedrooms, and living rooms.</p>
	<p>FS019-2 Shelf Installation Instructions</p> <p>Step-by-step guide for installing the FS019-2 shelf, including package contents, tools required, and safety information for both wood stud and concrete/brick wall installations.</p>
	<p>How to Install Our Wood Floating Shelves: A Step-by-Step Guide</p> <p>Learn how to easily install Our Wood floating shelves to create a stylish and modern statement in any room. This guide covers mounting brackets, attaching shelves, and decorating.</p>