

[Manuals.plus](#) /

› [Carpuride](#) /

› Carpuride 12V Rear Camera User Manual

Carpuride 12V Rear Camera

Carpuride 12V Rear Camera User Manual

Model: 12V Rear Camera (Compatible with 701, 706, 707, 708, 901, 101, 103)

INTRODUCTION

This user manual provides comprehensive instructions for the installation, operation, and maintenance of your Carpuride 12V Rear Camera. Designed to enhance visibility behind your vehicle, this camera features a 2.5mm jack interface and is compatible with various Carpuride models, including 701, 706, 707, 708, 901, 101, and 103. It supports a 12-24V voltage range and includes a 6-meter cable for convenient installation.

SAFETY INFORMATION

- Ensure all connections are secure and properly insulated to prevent short circuits.
- Do not attempt to disassemble or modify the camera. This may void the warranty and cause damage.
- Always disconnect power before performing any installation or maintenance.
- Consult a professional if you are unsure about any installation steps.
- This camera is designed as an aid for reversing and parking; it does not replace the need for careful driving and direct observation.

PACKAGE CONTENTS

Verify that all items are present in the package:

- Carpuride 12V Rear Camera Unit
- 6-meter Video Cable with 2.5mm Jack
- Power Cable (Red and Black wires)
- Mounting Bracket and Screws



Image: The Carpuride 12V Rear Camera unit, along with its 6-meter video cable, power cable, and necessary connectors.

PRODUCT OVERVIEW

The Carpuride 12V Rear Camera is designed for durability and clear visibility, featuring night vision capabilities and an adjustable bracket.

12LED Night vision

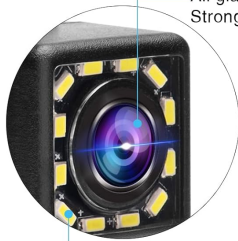
Waterproof Car Rear View Camera



Image: The camera demonstrating its 12-LED night vision and waterproof design in a wet environment, highlighting its suitability for various weather conditions.

Night Vision Function

All glass lens thicker
Stronger, more beautiful



Highlight LED Lamp
The auxiliary night vision, as well
auxiliary reversing lights



 Day



 Night

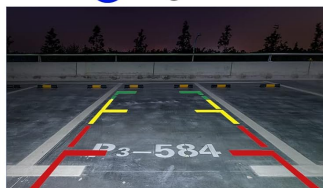


Image: A close-up illustrating the camera's night vision function, showing the highlight LED lamps that provide auxiliary illumination for reversing, and a comparison of day vs. night view with parking lines.

Adjustable Bracket

Can be adjuste at high and low angle



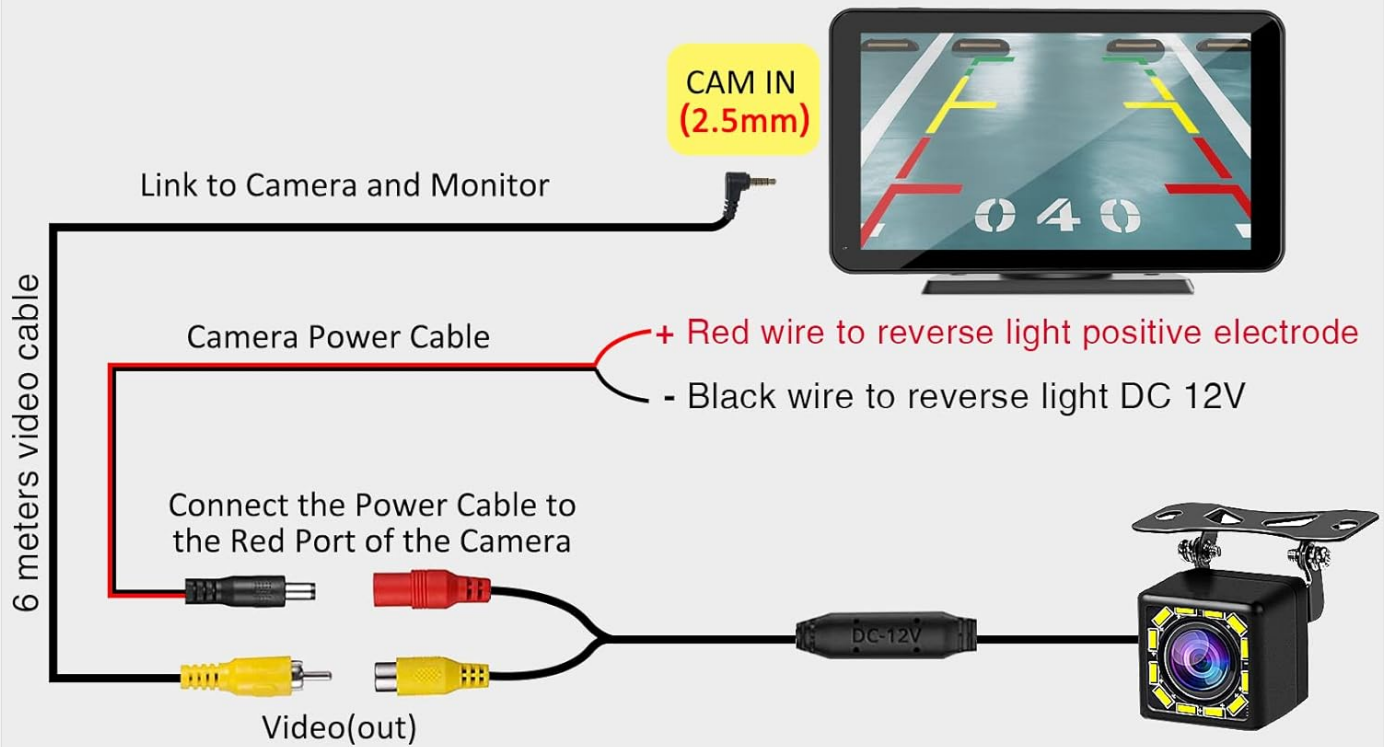
Image: The camera mounted on its adjustable bracket, demonstrating how it can be adjusted for high or low angles to achieve an optimal 170-degree rear view.

SETUP AND INSTALLATION

Follow these steps for proper installation of your Carpuride rear camera. It is recommended to test the camera connection before finalizing the installation.

- 1. Choose Mounting Location:** Select a suitable location at the rear of your vehicle, typically above the license plate or near the trunk handle, ensuring a clear view and protection from direct impact.
- 2. Mount the Camera:** Secure the camera using the provided mounting bracket and screws. Ensure it is firmly attached and the angle can be adjusted as needed.
- 3. Route the Video Cable:** Carefully route the 6-meter video cable from the camera to the location of your Carpuride car stereo or monitor. Ensure the cable is not pinched or exposed to sharp edges.
- 4. Connect Power:**
 - Connect the **red wire** of the power cable to the positive electrode of your vehicle's reverse light (typically 12V). This allows the camera to activate automatically when reversing.
 - Connect the **black wire** of the power cable to a reliable ground point (DC 12V negative) on your vehicle's chassis.
- 5. Connect Video Input:** Plug the 2.5mm jack of the 6-meter video cable into the "CAM IN" (2.5mm) port on your compatible Carpuride car stereo or monitor.
- 6. Test the System:** Turn on your vehicle and engage reverse gear. Verify that the camera image appears clearly on your Carpuride display. Adjust the camera angle if necessary.

HD Rear Camera



1. Car Stereo
2. Camera Power Source
3. Camera



Image: A detailed wiring diagram showing the connections for the Carpuride HD Rear Camera. It illustrates routing the 6-meter video cable to the car stereo, connecting the red power wire to the reverse light positive electrode, and the black wire to DC 12V ground.

Note: This camera is designed for 2.5mm interface models (701, 706, 707, 708, 901, 101, 103). It does **not** support Carpuride W903 car audio. For W903, please refer to ASIN: B0CLY6CV27 for a compatible camera.

OPERATING INSTRUCTIONS

Once installed, the Carpuride 12V Rear Camera operates automatically with your compatible Carpuride display unit.

- **Automatic Activation:** When your vehicle is put into reverse gear, the camera will automatically power on and transmit video to your connected Carpuride display.
- **Viewing the Feed:** The display will automatically switch to the camera's view, providing a clear picture of the area behind your vehicle.
- **Night Vision:** The integrated 12 LED lights provide enhanced visibility in low-light conditions, acting as auxiliary reversing lights.
- **Parking Guidelines:** The camera feed includes static parking guidelines to assist with accurate parking maneuvers.

MAINTENANCE

To ensure optimal performance and longevity of your Carpuride 12V Rear Camera, follow these maintenance guidelines:

- **Clean the Lens:** Regularly clean the camera lens with a soft, damp cloth to remove dirt, dust, or water spots that may obstruct the view. Avoid abrasive cleaners.
- **Check Connections:** Periodically inspect all cable connections to ensure they remain secure and free from corrosion.
- **Inspect Wiring:** Check the wiring for any signs of wear, fraying, or damage. Repair or replace damaged wiring immediately.
- **Bracket Security:** Ensure the mounting bracket remains tight and secure. Re-tighten screws if necessary.

TROUBLESHOOTING

If you encounter issues with your Carpuride 12V Rear Camera, refer to the following common problems and solutions:

| Problem | Possible Cause | Solution |
|-------------------------------------|--|---|
| No image on display when reversing. | Loose video cable connection. Incorrect power connection. Camera malfunction. Incompatible display unit (e.g., W903). | Check the 2.5mm video jack connection to the display. Verify red wire is connected to reverse light positive and black wire to ground. Ensure the display unit is set to the correct video input. Confirm your Carpuride model is compatible (not W903). |
| Image is blurry or unclear. | Dirty camera lens. Poor video signal. Low resolution of the camera (as noted by some users). | Clean the camera lens with a soft cloth. Check video cable for damage or loose connections. Ensure proper power supply to the camera. |
| Camera image flickers or cuts out. | Unstable power supply. Loose connections. Interference. | Verify stable 12-24V power supply. Check all power and video connections for tightness. Ensure wiring is routed away from high-voltage cables. |
| Night vision is poor. | Dirty lens or obstructed LEDs. Insufficient ambient light. | Clean the camera lens and ensure LEDs are clear. Note that night vision performance depends on some ambient light or the vehicle's reverse lights. |

SPECIFICATIONS

| Feature | Detail |
|-----------------------|------------------------------|
| Item Weight | 5.6 ounces |
| Voltage Compatibility | 12-24 Volts |
| Connector Type | 2.5mm Jack |
| Cable Length | 6 meters (approx. 19.7 feet) |

| Feature | Detail |
|-------------------------------|--|
| Real Angle of View | 170 Degrees |
| Night Vision | 12 LED Auxiliary Lights |
| Compatible Carpuride Models | 701, 706, 707, 708, 901, 101, 103 |
| Incompatible Carpuride Models | W903 (requires separate camera ASIN: B0CLY6CV27) |

WARRANTY AND SUPPORT

Carpuride products are designed for reliability and performance. For specific warranty details, please refer to the warranty card included with your product or visit the official Carpuride website. If you encounter any issues or require technical assistance, please contact Carpuride customer support through their official channels. When contacting support, please have your product model number and purchase information ready.

For more information, visit the [Carpuride Store on Amazon](#).

