

Manuals+

[Q & A](#) | [Deep Search](#) | [Upload](#)

[manuals.plus](#) /

› [Westbrass](#) /

› [Westbrass 593244-4-26 Bathtub Waste & Overflow Assembly Instruction Manual](#)

Westbrass 593244-4-26

Westbrass Bathtub Waste & Overflow Assembly

MODEL: 593244-4-26

14" x 1-1/2" White Tubular Bathtub Waste & Overflow Assembly with Tip-Toe Drain Plug and 2-Hole Faceplate, Polished Chrome

Product Overview

This Westbrass White Tubular Tip-Toe Bath Waste Drain Kit provides a straightforward and dependable solution for standard bathtub installations. It features a classic tip-toe style drain plug, enabling easy opening and closing with a simple foot press. The assembly utilizes durable white polypropylene tubular components that connect via slip joints, ensuring a secure and watertight seal. This kit is suitable for both new construction and renovation projects, offering a functional and clean finish with consistent performance.

Key Features:

- **1-1/2" x 14" Bath Waste Assembly:** Includes white poly slip-joint tubes for quick connection and leak-resistant installation.
- **ADA Approved Tip-Toe Drain Plug:** Foot-operated stopper opens and closes with a simple press, offering accessible, hands-free convenience.
- **Two-Hole Overflow Faceplate:** Features two (2) 1/4 in.-20 x 1-1/2 in. plated brass color-matched screws for a secure, clean finish.
- **Complete PVC Fittings Included:** Two-hole elbow, drain shoe, and tee ensure full compatibility with standard tub configurations.
- **Heavy Duty Metal Trim:** Strong, corrosion-resistant components offer durability and a professional appearance for long-lasting performance.

Package Contents

Verify that all components listed below are present in your package:

- (4) - Bath Waste & Overflow Assembly
- White Polypropylene Tubular Components (Overflow Pipe, Drain Shoe, Tee)
- Tip-Toe Drain Plug (Polished Chrome)
- 2-Hole Overflow Faceplate (Polished Chrome)

- Gaskets and Fasteners



Image: All components included in the Westbrass 593244-4-26 bathtub waste and overflow assembly kit.



Image: Front view of the individual components for the Westbrass bathtub waste and overflow assembly.

Technical Specifications

Material	Brass, Polypropylene
Brand	Westbrass
Color	Polished Chrome
Product Dimensions	1.5"W x 14"H
Item Weight	1.5 Pounds
Number of Items	4 (for this specific pack)
Item Model Number	593244-4-26
Style	14" x 1-1/2" White Tubular Bathtub Waste & Overflow Assembly with Tip-Toe Drain Plug and 2-Hole Faceplate

Warranty	1 year limited warranty
----------	-------------------------

Installation Guide

Professional installation is recommended. Ensure all local plumbing codes are followed. Before beginning, turn off the water supply to the bathtub.

Tools and Materials (Not Included):

- Plumber's Putty or Silicone Sealant
- Screwdriver
- Adjustable Wrench or Drain Wrench
- Pliers

Installation Steps:

1. **Prepare the Bathtub:** Ensure the bathtub drain and overflow openings are clean and free of debris.
2. **Assemble the Overflow:** Attach the overflow pipe to the overflow opening of the bathtub. Secure the 2-hole faceplate from the outside of the tub using the provided screws. Ensure a watertight seal with a gasket or plumber's putty as required.
3. **Install the Drain Shoe:** Apply plumber's putty or sealant around the underside of the drain flange (the part that sits inside the tub). Insert the drain shoe assembly into the bathtub drain opening from above. From below, attach the drain shoe body to the drain flange, tightening securely with a drain wrench or appropriate tool.
4. **Connect Tubular Components:** Connect the overflow pipe to the tee fitting, and the drain shoe to the tee fitting using the slip joints. Ensure all connections are hand-tightened, then use an adjustable wrench to secure them, being careful not to overtighten the plastic components.
5. **Install Tip-Toe Drain Plug:** Insert the tip-toe drain plug into the drain shoe. Test its operation by pressing down to open and close.
6. **Test for Leaks:** Fill the bathtub with water and check all connections for leaks. Tighten any leaking connections as necessary.



Image: Technical diagram illustrating the assembly and dimensions of the Westbrass 593244 waste and overflow system.



Image: A fully assembled view of the Westbrass bathtub waste and overflow system, showing the connected components.

Operation of Tip-Toe Drain

The tip-toe drain plug is designed for simple, hands-free operation:

- To **close** the drain and retain water in the tub, press down firmly on the center of the drain plug with your foot.
- To **open** the drain and allow water to flow out, press down firmly on the center of the drain plug again. The plug will pop up, opening the drain.



Image: Close-up of the tip-toe drain plug, indicating the 'PUSH' mechanism for operation.

Care and Maintenance

To ensure the longevity and appearance of your Westbrass bathtub waste and overflow assembly, follow these care instructions:

- **Regular Cleaning:** Clean the visible metal trim (drain plug and faceplate) regularly with a soft cloth and a mild, non-abrasive cleaner. Avoid harsh chemicals, abrasive pads, or polishes that can damage the finish.
- **Drain Plug Maintenance:** Periodically remove the tip-toe drain plug to clean any hair or debris that may accumulate. Refer to the troubleshooting section for instructions on removing the drain plug components.
- **Avoid Damage:** Do not use excessive force when operating the drain plug. Avoid dropping heavy objects onto the drain or overflow faceplate.

Troubleshooting

Leaking Tip-Toe Bathtub Drains:

If your tip-toe drain is leaking, it may be due to the washer not properly engaging with the stopper. This can often be resolved by adjusting the internal mechanism.

Video: Official Westbrass guide on troubleshooting leaking tip-toe bathtub drains. This video demonstrates how to adjust the internal washer to ensure a proper seal.

Steps to Resolve Leaking:

1. **Remove the Cap:** Carefully remove the cap from the drain plug or the entire cartridge from the drain body.
2. **Open the Drain:** Fully open the drain mechanism and remove the cover cap to expose the internal screw.
3. **Tighten the Screw:** Using a screwdriver, tighten the screw located inside the mechanism. This adjustment helps the washer engage correctly.
4. **Reinstall:** Reinstall the drain plug and cover. Test the drain for proper sealing.

Troubleshooting Leaking Tip-Toe Bathtub Drains

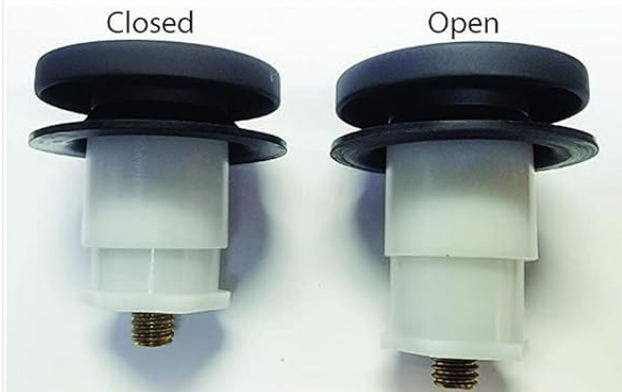
D3322, D3323, D398R, D93, R931K, R93-2, etc.



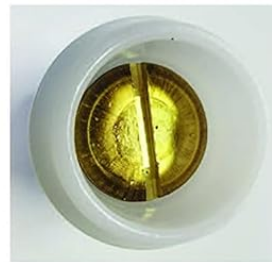
Sometimes the tip-toe washer does not engage with the stopper, allowing the water to leak. This is how to resolve this.



Remove Cap from drain or the cartridge from the drain body



Fully Open the drain and remove the Cover Cap



Tighten Screw with Screwdriver and reinstall drain and cover.



WESTBRASS • 2429 E. Olympic Blvd., Los Angeles, CA 90021
(213)-627-8441 • fax:(213) 627-2844 • orders@westbrass.com • www.westbrass.com

Image: Visual guide for troubleshooting a leaking tip-toe drain, detailing the steps to remove the cap, open the drain, and tighten the internal screw.

Warranty Information

This Westbrass product is covered by a **1-year limited warranty** from the date of purchase. This warranty covers defects in material and workmanship under normal use and service. For warranty claims or further assistance, please contact Westbrass customer support.

Customer Support

For additional support, questions, or to purchase replacement parts, please visit the official Westbrass

website or contact their customer service department. You can also find more products and information on the [Westbrass Storefront on Amazon](#).