

COLBOR CL60

COLBOR CL60 65W COB LED Video Light User Manual

Model: CL60

1. INTRODUCTION

This manual provides detailed instructions for the safe and effective operation of your COLBOR CL60 65W COB LED Video Light. Please read this manual thoroughly before using the product and retain it for future reference. The COLBOR CL60 is a compact, bi-color LED light designed for various photography and videography applications, featuring adjustable color temperature, brightness, and special effects.

2. SAFETY INFORMATION

To prevent damage to the product or injury to yourself or others, please observe the following safety precautions:

- Do not disassemble or modify the product. Unauthorized modifications may cause malfunction or electric shock.
- Keep the device dry. Do not handle with wet hands or immerse in water.
- Ensure the power source matches the specified voltage requirements.
- Avoid direct eye exposure to the light source.
- Keep out of reach of children.
- Operate in a well-ventilated area to prevent overheating.
- Remove the protective film from the COB light before initial use.

3. PACKAGE CONTENTS

Verify that all items listed below are included in your package:

- COLBOR CL60 Video Light (x1)
- Standard Adapter (Bowens Mount) (x1)

- Bowens Mount Reflector (x1)
- Light Base (x1)
- COB Protective Cover (x1)
- Carrying Bag (x1)
- Power Adapter (x1)
- User Manual (x1)

Professional Customer Service

Local Language Service Team



Reply within 24 hours on working days,
provide solutions until you are satisfied



CL60 Video Light x1



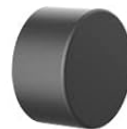
Standard Adapter
(Bowens Mount) x1



Bowens Mount Reflector x1



Light Base x1



COB Protective Cover x1



Carrying Bag x1



Power Adapter x1



User Manual x1

Image: Contents of the COLBOR CL60 package, including the light, various adapters, reflector, protective cover, carrying bag, power adapter, and user manual.

4. PRODUCT OVERVIEW

The COLBOR CL60 is a compact and robust video light constructed from aircraft-grade aluminum alloy. It features a COB LED for continuous output, a control panel with an LCD screen, and multiple mounting options.

Key Features:

- **Adjustable Color Temperature:** 2700K to 6500K.
- **Brightness Control:** 0% to 100% dimming.
- **High Color Rendering:** CRI 97+ for accurate color reproduction.
- **Special Lighting Effects:** 10 built-in effects with 46 modes.
- **Compact Design:** Weighs approximately 550 grams (1.2 lbs) and measures 14x8x9cm (5.5x3x3.5 inches).
- **Bowens Mount Compatibility:** Allows attachment of various light modifiers.
- **PowerCube Design:** Multiple CL60 units can be interlocked via slide rails to create a larger light matrix.
- **COLBOR Studio APP Control:** Remote control for up to 10 lights.
- **Versatile Power Options:** Supports Type-C PD power banks, PD adapters, V-mount, and NP-F batteries.
- **Quiet Cooling System:** Aluminum alloy body with a built-in cooling system, operating below 20dB in Quiet Mode.

65W COB Light with Powerful Output

Inbuilt 65W COB LED Beads, Rated Power 80W Max



2888Lux (at 1m 6500K, No Reflector)

20240Lux (at 1m 6500K, With Reflector)



CRI ≥ 97+



2700K

6500K

Image: Two COLBOR CL60 lights demonstrating light output and color rendering capabilities with a CRI of 97+.

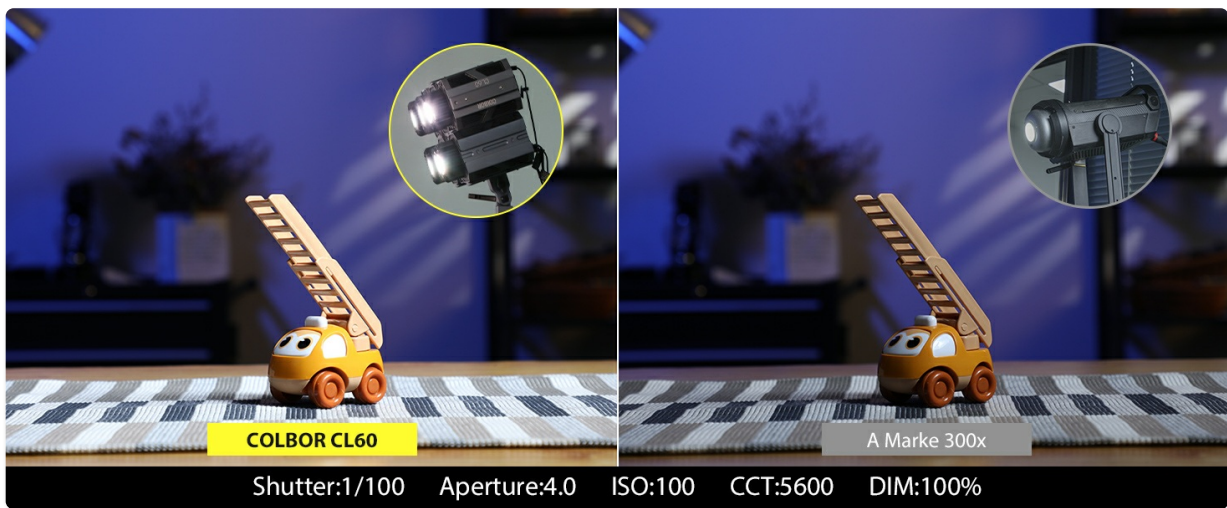


Image: A person holding the COLBOR CL60 light, illustrating its ultra-compact size and portability.

5. SETUP

Follow these steps to set up your COLBOR CL60 video light:

1. **Attach the Light Base:** Secure the light base to the bottom slide rail of the CL60. This base typically includes a 1/4" screw thread for mounting onto a light stand or tripod.
2. **Mount to a Stand:** Attach the CL60 (with the light base) to a compatible light stand or tripod. Tighten securely.
3. **Install Bowens Mount Adapter:** If using Bowens mount accessories, attach the standard Bowens mount adapter to the front of the CL60. Align the adapter with the light's front and twist to lock.
4. **Attach Reflector or Modifier:** Mount the Bowens mount reflector or any other compatible light modifier (e.g., softbox, lantern) onto the Bowens mount adapter.
5. **Connect Power:** Connect the power adapter to the Type-C port on the CL60 and then to a power outlet. Alternatively, connect a compatible PD power bank or battery solution (see Section 7 for details).
6. **PowerCube Configuration (Optional):** For increased light output, multiple CL60 units can be interlocked using their side slide rails to form a larger lighting matrix.



Image: A close-up view of the Bowens mount mechanism on the COLBOR CL60, illustrating how light modifiers are attached.



Image: Diagram showing how multiple COLBOR CL60 units can be connected via their slide rails to form a larger 'PowerCube' lighting array.

6. OPERATING INSTRUCTIONS

The COLBOR CL60 can be operated using its onboard controls or via the COLBOR Studio App.

Onboard Control:

1. **Power On/Off:** Press the power button to turn the light on or off.
2. **Adjust Brightness (DIM):** Use the designated control wheel to adjust the light intensity from 0% to 100%.
3. **Adjust Color Temperature (CCT):** Use the CCT control wheel to change the color temperature between 2700K (warm) and 6500K (cool).
4. **Access Special Effects (EFF):** Press the 'EFF' button to cycle through the available lighting effects. Use the control wheel to select and adjust specific effect modes (e.g., Fire, Pulsing, TV, Lightning).
5. **Menu Navigation:** Use the 'SET' button and control wheels to navigate through menu options displayed on the LCD screen.



Image: Visual representation of various lighting effects available on the COLBOR CL60, such as Fire, CCT Chase, Pulsing, TV, Explosion, Faulty Bulb, Welding, Strobe, Lightning, and SOS.

7. APP CONTROL (COLBOR STUDIO APP)

The COLBOR Studio App allows for remote control of your CL60 light(s) via a smartphone or tablet.

1. **Download the App:** Search for "COLBOR Studio" in your device's app store and install it.
2. **Enable Bluetooth:** Ensure Bluetooth is enabled on your smartphone/tablet.
3. **Pair Devices:** Open the COLBOR Studio App. The app should automatically detect nearby CL60 lights. Follow the in-app instructions to pair your light(s).
4. **Control Functions:** Within the app, you can adjust brightness, color temperature, and activate special effects. The app also supports matrix control, allowing you to manage up to 10 lights simultaneously or individually.



Image: A smartphone screen displaying the COLBOR Studio App interface, showing controls for brightness, color temperature, and multiple light management.

8. POWER SOLUTIONS

The COLBOR CL60 offers flexible power options for studio and on-location use:

- **AC Power Adapter:** Use the included power adapter for continuous power from a wall outlet.
- **Type-C PD Power Bank:** The CL60 supports charging and operation via PD (Power Delivery) compatible power banks with an output greater than 65W.
- **V-Mount / NP-F Batteries:** With optional accessories (sold separately), the CL60 can be powered by V-mount or NP-F batteries for portable operation.

Supporting Type-c Charging Next Generation Power Solution

COLBOR CL60 supports power supply via Multiple Charging Methods.

TYPE-C
CHARGING



Power Bank Supply (Output>65W)

V Mount battery/NP-F battery



Image: Close-up of the COLBOR CL60's Type-C charging port and examples of power bank and V-mount battery setups.

9. MAINTENANCE

Proper maintenance ensures the longevity and performance of your COLBOR CL60:

- **Cleaning:** Use a soft, dry cloth to clean the exterior of the light. Do not use harsh chemicals or abrasive materials.
- **Storage:** Store the light in its carrying bag in a cool, dry place away from direct sunlight and extreme temperatures.

- **Cooling System:** The built-in Hummingbird-Intelligence Cooling System manages heat. Ensure the vents are not obstructed during operation. The fan operates quietly, typically below 20dB in Quiet Mode.



Image: Diagram illustrating the internal cooling system of the COLBOR CL60, highlighting airflow and heat dissipation mechanisms.

10. TROUBLESHOOTING

If you encounter issues with your COLBOR CL60, refer to the following common problems and solutions:

Problem	Possible Cause	Solution
Light does not power on.	No power, faulty cable, or power adapter.	Check power connection. Ensure power adapter is functional. Try a different Type-C cable or power source.
App cannot connect to the light.	Bluetooth off, app issue, or light not in pairing mode.	Ensure Bluetooth is enabled on your device. Restart the app and the light. Try re-pairing the device in the app.
Light output is inconsistent or flickers.	Unstable power supply or internal issue.	Ensure a stable power source. If using a power bank, verify it meets the required output. Contact support if the issue persists.
Fan noise is louder than expected.	Operating in Smart Mode or obstructed vents.	Check if the light is in Quiet Mode. Ensure vents are clear of obstructions.

11. SPECIFICATIONS

Feature	Detail
Model	CL60
Power Output	65W
Color Temperature	2700K-6500K

Feature	Detail
CRI	97+
Product Dimensions	5.5 x 3 x 3.5 inches (14 x 8 x 9 cm)
Item Weight	1.21 pounds (550 grams)
Mounting	Bowens Mount, 1/4" screw thread, Slide Rails
Control Method	Onboard controls, COLBOR Studio App
Power Input	Type-C (PD compatible), AC Adapter, V-mount/NP-F (with optional accessories)
Cooling System	Hummingbird-Intelligence Cooling System (<20dB in Quiet Mode)

12. WARRANTY AND SUPPORT

COLBOR products are designed for reliability and performance. For warranty information and technical support, please refer to the warranty card included with your product or visit the official COLBOR website. Our customer service team is available to assist with any questions or issues you may encounter. For direct support, please contact COLBOR customer service through the contact information provided on the official website or your purchase platform.