

Manuals+

[Q & A](#) | [Deep Search](#) | [Upload](#)

Manuals.plus /

› [YITAHOME](#) /

› YITAHOME XXL 230 Gallon Large Deck Box Instruction Manual

YITAHOME MAYIH0000015MA

YITAHOME XXL 230 Gallon Large Deck Box Instruction Manual

Brand: YITAHOME | **Model:** MAYIH0000015MA

1. INTRODUCTION

Thank you for choosing the YITAHOME XXL 230 Gallon Large Deck Box. This outdoor storage solution is designed to provide ample space and protection for your patio furniture cushions, garden tools, pool accessories, and other outdoor essentials. Constructed from durable, all-weather guard resin with a double-wall structure, it offers rustproof, corrosion-resistant, and maintenance-free performance. The innovative design includes a flexible divider and hydraulic pistons for easy and safe operation of the lid.



Image: The YITAHOME XXL 230 Gallon Large Deck Box, closed, situated on a wooden deck surrounded by lush greenery.

2. SAFETY INFORMATION

- Read all instructions carefully before assembly and use.
- Keep children and pets away from the assembly area. Small parts may pose a choking hazard.
- Do not allow children to play inside the deck box to prevent suffocation.
- Do not climb or sit on the lid unless specified for seating, and ensure the maximum weight capacity of 1000 pounds is not exceeded.
- Ensure all components are properly secured and tightened during assembly to maintain structural integrity and waterproofing.
- Use caution when opening and closing the lid to avoid pinching fingers. The hydraulic pistons are designed for smooth operation, but care should still be taken.
- If moving the assembled deck box, ensure two people lift it using the built-in side handles.

3. PACKAGE CONTENTS

Please verify that all parts are present before beginning assembly. If any parts are missing or damaged, contact YITAHOME customer service.

- Side Panels (2)
- Front Panel (1)
- Back Panel (1)
- Bottom Panel (1)
- Lid (1)
- Flexible Divider (1)
- Hydraulic Pistons (2)
- Metal Braces/Reinforcement Bars (for frame stability)
- Hardware Pack (screws, nuts, etc.)

4. ASSEMBLY INSTRUCTIONS

Assembly typically takes approximately 30 minutes. A second person may be helpful for attaching the lid.

1. **Prepare the Area:** Ensure you have a clear, flat surface for assembly.
2. **Assemble Side Panels:** Connect the side panels to the front and back panels according to the instructions, ensuring all tabs and slots align.
3. **Attach Bottom Panel:** For easier installation, it is recommended to turn the partially assembled box upside down. Align the bottom panel with the grooves and firmly press or use a rubber mallet to secure it into place, ensuring all snaps are engaged.
4. **Install Metal Braces:** Slide the metal reinforcement bars into the designated slots along the top edges of the front and back panels to enhance structural stability.
5. **Attach Lid Hinges:** Secure the lid hinges to the back panel and the lid using the provided hardware.
6. **Install Hydraulic Pistons:** Attach the hydraulic pistons to the designated points on the lid and the side panels. These pistons allow for a smooth, controlled opening and closing of the lid.

- 7. Insert Flexible Divider:** Place the flexible divider into the two accompanying slots inside the box. This divider can be adjusted or removed based on your storage needs.
- 8. Final Check:** Ensure all connections are secure and the lid closes properly.

Your browser does not support the video tag.

Video: An official YITAHOME video demonstrating the assembly process and key features of the 230 Gallon Double-Wall Deck Box, including the hydraulic lid and spacious interior.

EXTRA MIGHTY CONSTRUCTION

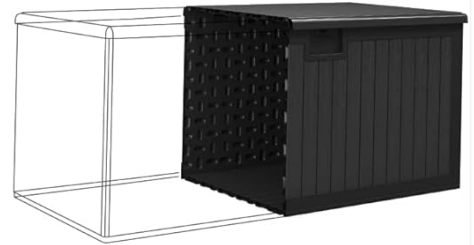


Image: A cutaway diagram illustrating the robust double-wall structure and advanced blow molding technique used in the construction of the deck box.

5. OPERATING INSTRUCTIONS

Opening and Closing the Lid

The lid is equipped with hydraulic pistons for smooth and effortless opening and closing. Gently lift the lid, and the pistons will assist in holding it open. To close, gently push down on the lid until it latches securely.

Using the Flexible Divider

The deck box includes a flexible divider with two accompanying slots. You can use the divider to create separate compartments for organized storage or remove it entirely to maximize the internal space for larger items.



Image: A man demonstrating the flexible divider inside the deck box, highlighting its detachable nature and two slot positions for versatile storage organization.

Lockable Feature

The deck box is designed to be lockable for added security. A padlock (not included) can be attached to the designated latch on the front of the lid.

Versatile Storage

This deck box is ideal for storing a variety of items, including patio furniture cushions, gardening tools, pool equipment, and other outdoor supplies. Its sturdy lid can also serve as an extra table or seating surface.



Image: A man placing patio cushions into the open YITAHOME deck box, demonstrating its large storage capacity for outdoor items.

6. MAINTENANCE

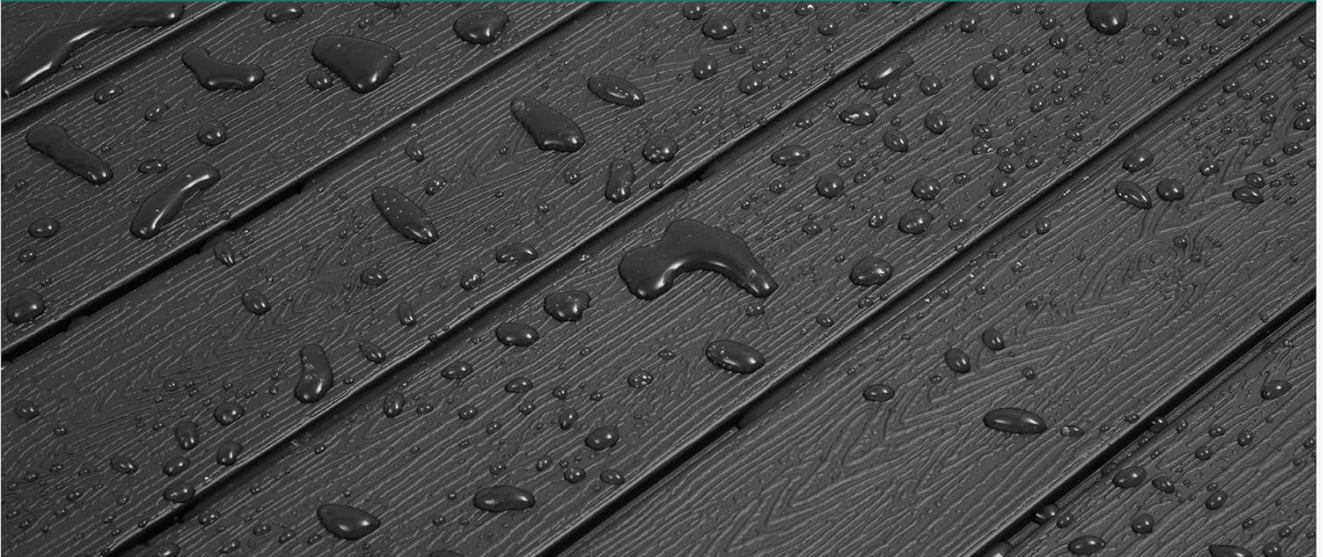
Cleaning

To clean the deck box, simply wipe it down with a damp cloth and mild soap. Avoid using abrasive cleaners or harsh chemicals, as these may damage the resin material.

Material Care

The deck box is made from all-weather guard resin, which is rustproof, corrosion-resistant, and designed for low maintenance. Regular cleaning will help maintain its appearance and prolong its lifespan.

▶ All-weather Guard



▶ Lockable Lid



▶ Built-in Side Handles



Image: A composite image showing a close-up of the deck box's water-resistant surface with water beads, the lockable latch (lock not included), and the convenient built-in side handles.

7. TROUBLESHOOTING

Lid Warping or Screws Detaching

In rare cases, the lid may experience warping or screws may detach over time due to environmental factors. If this occurs, please contact YITAHOME customer service for assistance.

Lid Opening in Heavy Wind

While the lid is designed to stay closed, strong winds may cause it to open if not secured. Utilize the lockable feature with a padlock (not included) to keep the lid firmly shut during windy conditions.

Difficulty Reaching Items at the Bottom

Due to the generous depth of the 230-gallon capacity, smaller items at the bottom may be difficult to reach. Consider using a long-handled grabber tool or organizing items in smaller containers for easier access.

8. SPECIFICATIONS

Feature	Detail
Brand	YITAHOME
Model Number	MAYIH0000015MA
Color	Black
Material	All-weather guard resin (rustproof, corrosion-resistant, maintenance-free)
Special Feature	Weatherproof, Flexible Divider, Lockable, Hydraulic Pistons
Dimensions (L x W x H)	62.2" x 31.1" x 32.6"
Capacity	230 Gallons
Item Weight	86 Pounds
Maximum Weight Recommendation (Lid)	1000 Pounds
UPC	840265284001



Image: A diagram illustrating the precise dimensions (length, width, height) of the YITAHOME XXL 230 Gallon Large Deck Box.

9. WARRANTY AND SUPPORT

For any warranty inquiries, missing parts, or product support, please contact YITAHOME customer service directly. Keep your purchase receipt and model number handy for faster service.

YITAHOME Customer Service: Refer to your product packaging or the official YITAHOME website for the most current contact information.