

## Turtlebox Turtlebox Original Gen 3

# Turtlebox Original Gen 3 Portable Outdoor Bluetooth Speaker User Manual

MODEL: TURTLEBOX ORIGINAL GEN 3

Brand: Turtlebox

## 1. IMPORTANT SAFETY INFORMATION

Please read and understand all safety instructions before using your Turtlebox Original Gen 3 speaker. Failure to follow these instructions may result in electric shock, fire, or serious injury.

- **Waterproof Rating:** The Turtlebox Original Gen 3 is IP67 rated, meaning it is fully waterproof in both fresh and saltwater and dust-proof. Ensure all port covers are securely closed before exposing the speaker to water.
- **Temperature:** Avoid exposing the speaker to extreme temperatures (hot or cold) for extended periods.
- **Disassembly:** Do not attempt to disassemble, repair, or modify the speaker. This will void the warranty and may cause damage or injury.
- **Charging:** Use only the provided charger. Ensure the charging port is dry before connecting the charger.
- **Hearing Protection:** This speaker can produce up to 120dB of sound. Prolonged exposure to high volume levels may cause permanent hearing damage. Listen responsibly.

## 2. WHAT'S IN THE BOX

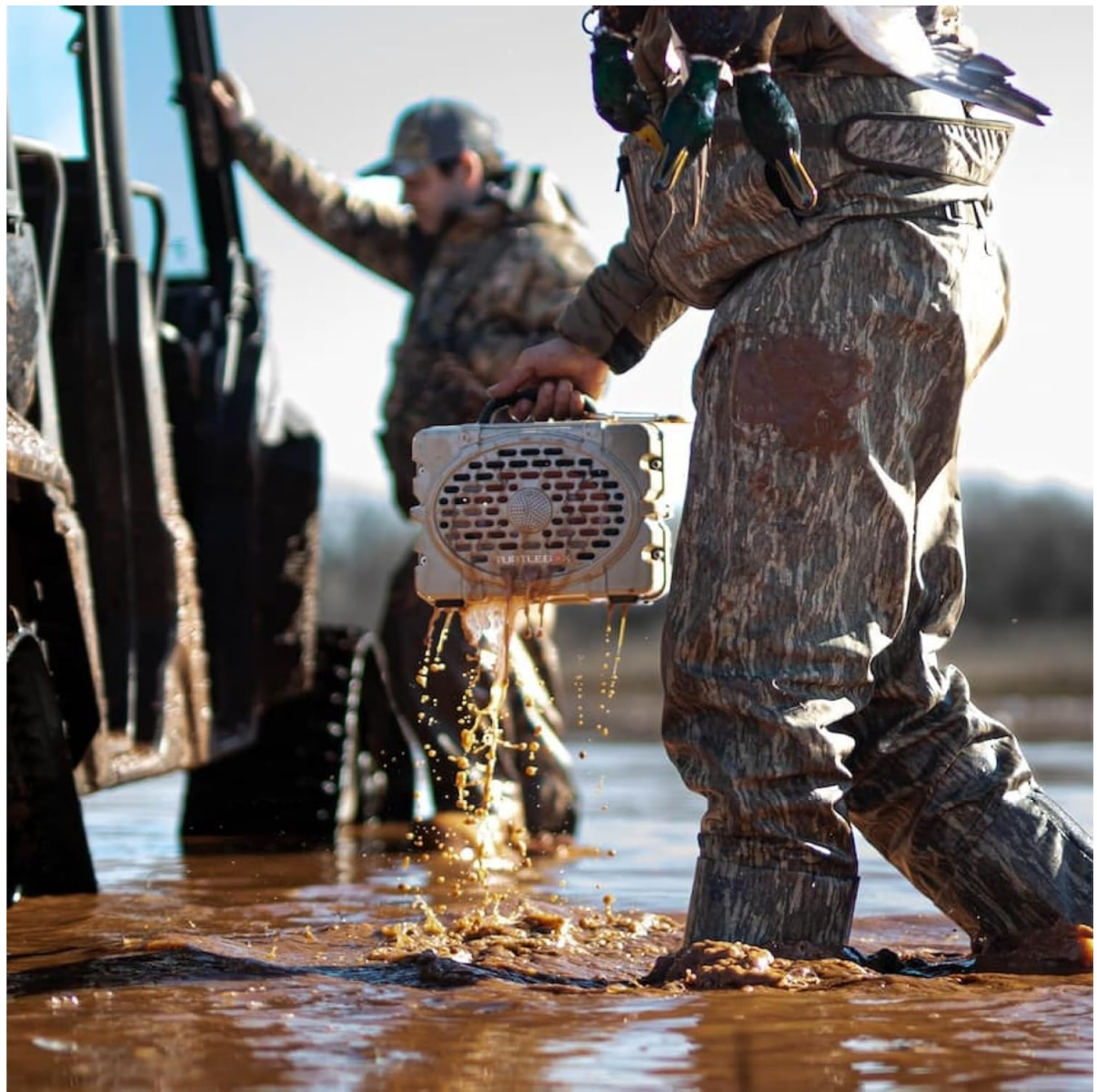
Your Turtlebox Original Gen 3 package includes:

- 1 x Turtlebox Original Gen 3 Speaker
- 1 x Charger

## 3. PRODUCT OVERVIEW

The Turtlebox Original Gen 3 is a portable outdoor Bluetooth speaker designed for durability and high-

quality sound in challenging environments. It features a rugged, impact-resistant construction, IP67 waterproof rating, and a long-lasting battery.

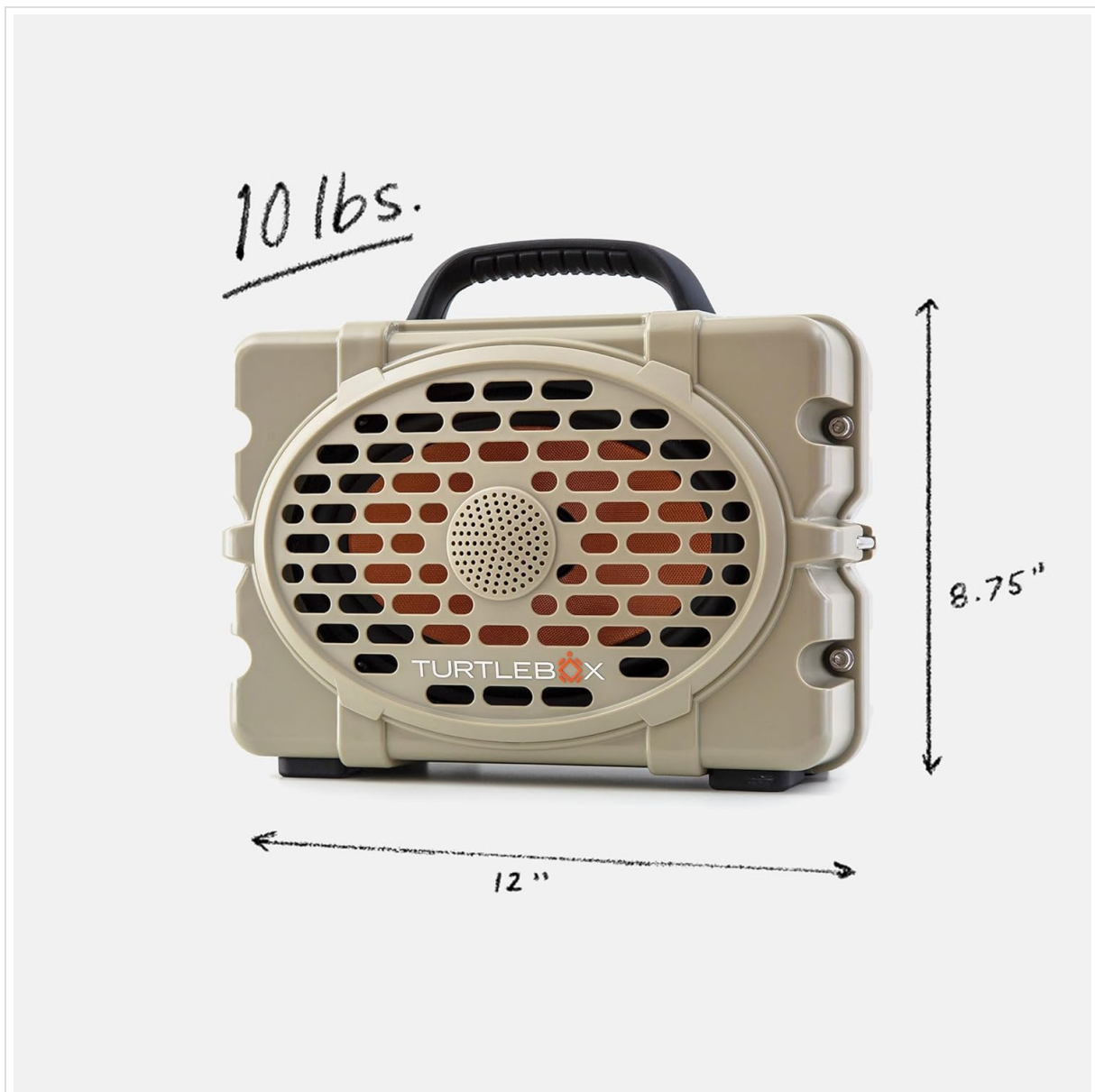


*Image: Front view of the Turtlebox Original Gen 3 speaker, showcasing its robust design and speaker grille.*



*Image: Top view of the Turtlebox Original Gen 3 speaker, highlighting the integrated handle and control panel.*





*Image: Side view of the Turtlebox Original Gen 3 speaker, showing its compact and sturdy build.*

## 4. SETUP

### 4.1 Initial Charge

Before first use, fully charge your Turtlebox Original Gen 3 speaker. Connect the provided charger to the charging port located under the sealed cover on the back of the speaker. The battery indicator lights on the control panel will show the charging status.

### 4.2 Power On/Off

To power on the speaker, press and hold the power button on the control panel until the indicator lights illuminate. To power off, press and hold the power button again until the lights turn off.

### 4.3 Bluetooth Pairing

1. Ensure the speaker is powered on and in Bluetooth pairing mode (the Bluetooth indicator light will be flashing).
2. On your mobile device (smartphone, tablet, etc.), go to the Bluetooth settings.
3. Select "Turtlebox Original Gen 3" from the list of available devices.

4. Once connected, the Bluetooth indicator light on the speaker will become solid.

#### 4.4 Party Mode / Stereo Pairing

The Turtlebox Original Gen 3 supports Party Mode, allowing you to connect multiple Original Gen 3 speakers for an immersive audio experience. **Note:** The Original Gen 3 does not pair with Gen 1 or Gen 2 Turtlebox speakers.

1. Ensure all speakers are powered on and not connected to any other Bluetooth devices.
2. On the primary speaker (the one you want to connect to your device), press the Party Mode button (often indicated by a chain link or multiple speaker icon).
3. On the secondary speakers, press their respective Party Mode buttons.
4. The speakers will automatically search and connect to each other. Once connected, the Party Mode indicator lights will become solid.
5. Connect your mobile device to the primary speaker via Bluetooth as described in Section 4.3.

### 5. OPERATING THE SPEAKER

#### 5.1 Basic Controls



3 DAY BATTERY

control, Bluetooth, and Party Mode.

- **Volume Up/Down:** Use the '+' and '-' buttons to adjust the volume.
- **Play/Pause:** Press the Play/Pause button (often indicated by a triangle/two vertical bars) to play or pause audio.
- **Skip Track:** Use the '>>|' button to skip to the next track.
- **Previous Track:** Use the '|<<' button to go to the previous track.

## 5.2 Light Modes

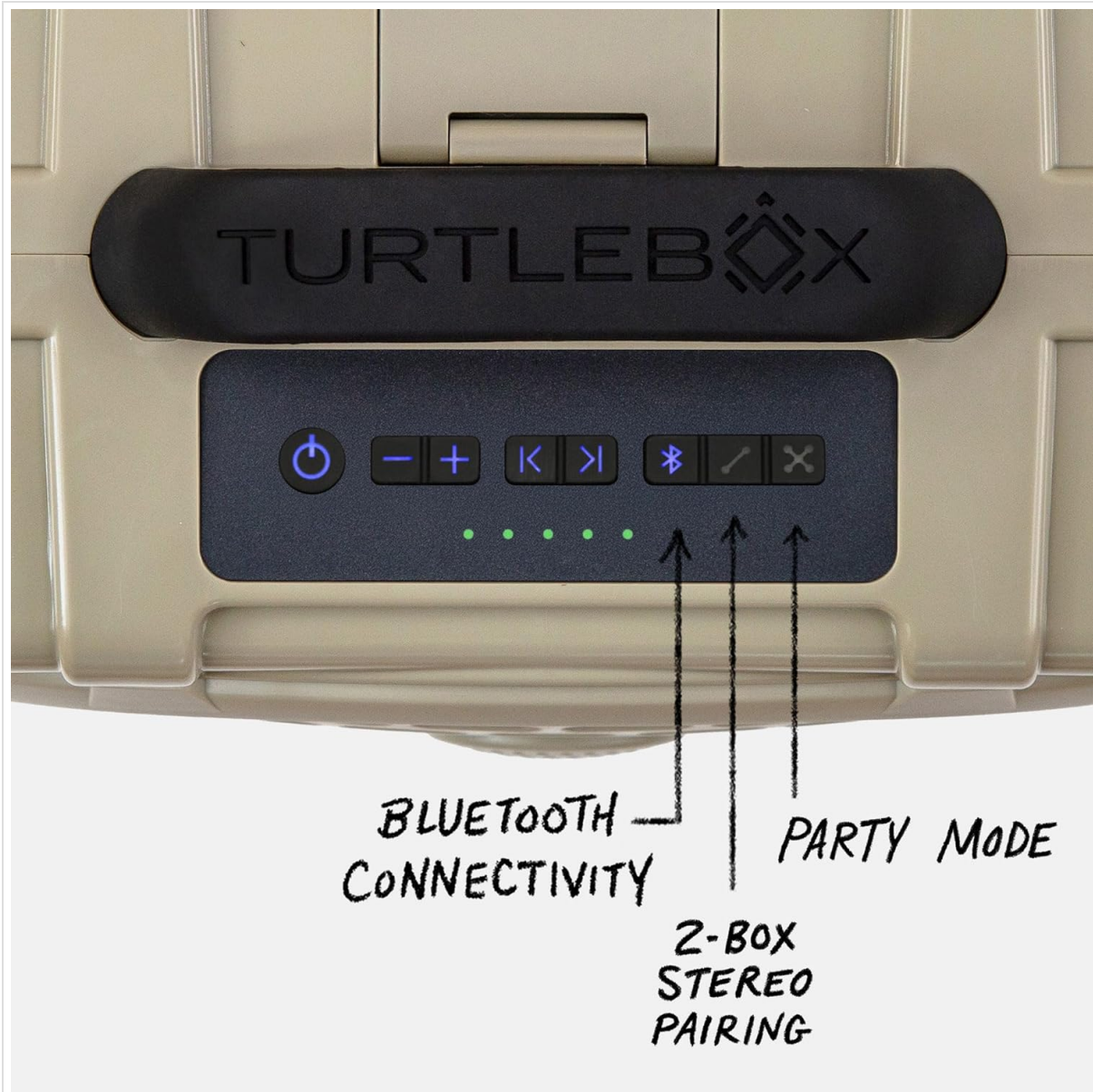
The speaker features various light modes that can be cycled through by pressing the dedicated light mode button (often indicated by a sun or lightbulb icon). Some modes may react to the music playback.

Your browser does not support the video tag.

*Video: A demonstration of the speaker's six light switching modes, showing how the lights change color and pattern.*

## 5.3 Auxiliary and Microphone Inputs

The Turtlebox Original Gen 3 includes a standard 3.5mm auxiliary input and a microphone input, both located under the sealed cover on the back of the speaker. These allow for wired audio connections.



*Image: Close-up view of the sealed port compartment on the Turtlebox Original Gen 3, revealing the USB, Aux, and Mic input jacks.*

## 5.4 Power Bank Functionality

The speaker can also function as a power bank to charge your mobile devices via its USB-A output port, located under the sealed cover on the back.

## 6. MAINTENANCE

### 6.1 Cleaning

Due to its waterproof design, the Turtlebox Original Gen 3 can be easily cleaned. Rinse with fresh water to remove dirt, sand, or saltwater. Use a soft cloth to wipe dry. Do not use harsh chemicals or abrasive cleaners.

### 6.2 Storage

Store the speaker in a cool, dry place away from direct sunlight when not in use. Ensure all port covers are securely closed to maintain its waterproof integrity.

## 7. TROUBLESHOOTING

- **No Power:** Ensure the battery is charged. Connect the speaker to the charger and allow it to charge for at least 30 minutes before attempting to power on again.
- **No Sound:** Check the volume levels on both the speaker and your connected device. Ensure the speaker is properly paired via Bluetooth or connected via auxiliary cable.
- **Bluetooth Pairing Issues:** Make sure the speaker is in pairing mode (flashing Bluetooth light). Turn off Bluetooth on other nearby devices that may be trying to connect. Try forgetting the speaker from your device's Bluetooth list and re-pairing.
- **Party Mode Not Connecting:** Ensure all speakers are Original Gen 3 models. Verify all speakers are in Party Mode pairing and not connected to individual devices.

## 8. SPECIFICATIONS

Model Name	Turtlebox Gen 3
Brand	Turtlebox
Material	Fiberglass, Stainless Steel, Titanium
Speaker Type	Tweeter, Bass Driver
Special Features	120 decibels of sound, 1" Titanium tweeter, 6" x 9" woofer, 85Wh Lithium-ion battery, Powerful Class D digital amplifier
Connectivity Technology	Bluetooth
Wireless Communication Technology	Bluetooth
Compatible Devices	iPhone, Android
Power Source	Battery Powered (1 Lithium Ion battery included)

<b>Speaker Maximum Output Power</b>	100 Watts
<b>Audio Output Mode</b>	Stereo, Surround
<b>Water Resistance Level</b>	Waterproof (IP67)
<b>Product Dimensions</b>	12"D x 8.75"W x 7"H
<b>Item Weight</b>	11.88 pounds
<b>Included Components</b>	Charger, Turtlebox Gen3 Speaker

## 9. WARRANTY AND SUPPORT

The Turtlebox Original Gen 3 comes with a **1-Year Manufacturer Warranty**. For warranty claims, technical support, or additional product information, please visit the official Turtlebox website or contact their customer service.